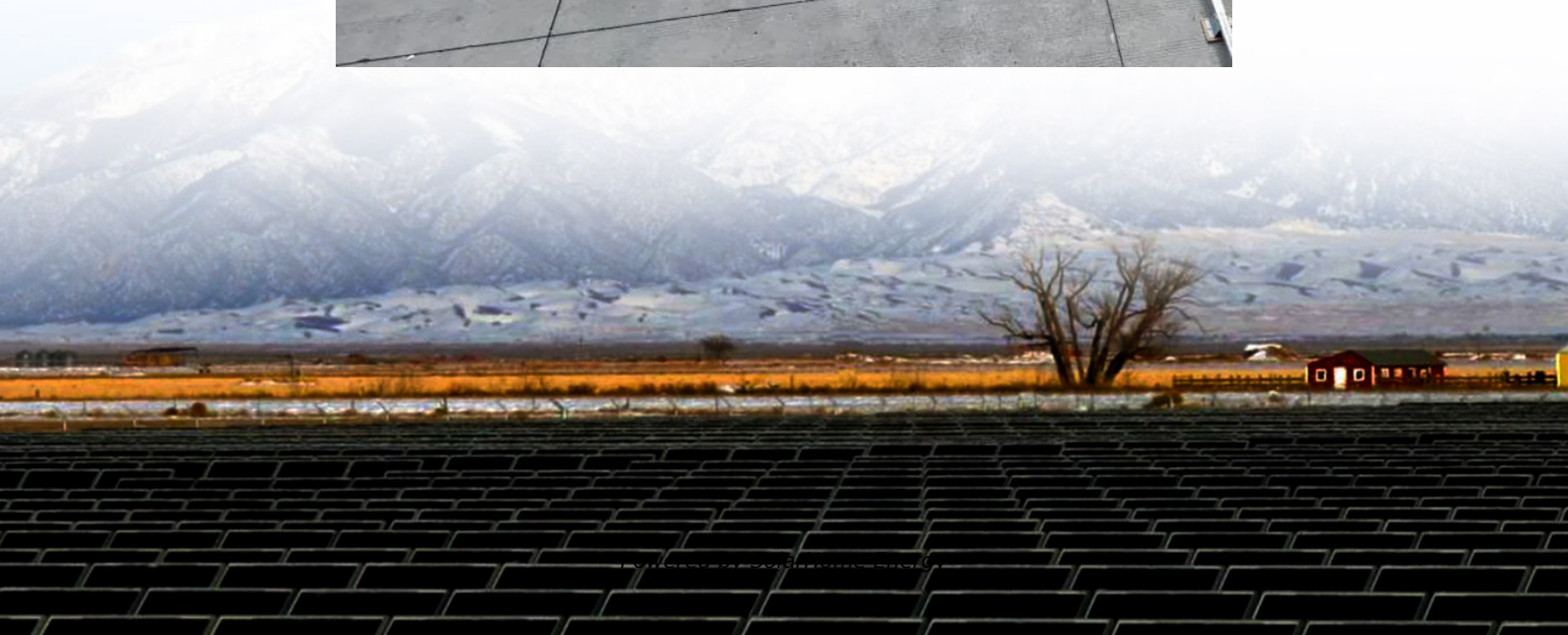
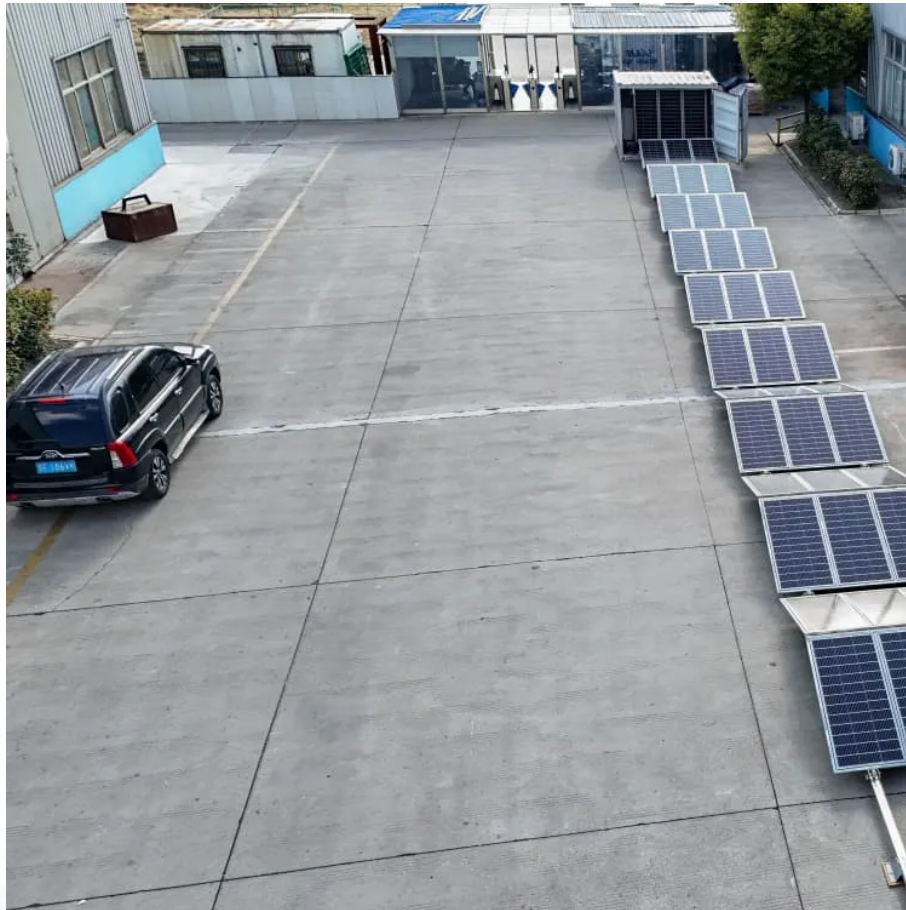


# **Communication base station inverter tower type**





## Overview

---

What are cell towers & base stations?

Cell towers or base stations serve the same purpose that is to produce network signals for the consumers. The cells move from one tower to another depending on the coverage area or frequency. The user of the carrier receives the signals or cells from the cell towers that are generated by the base station.

What is the difference between a base station and a cell tower?

The base stations are meant to improve the signal frequency and communication between interconnected devices such as computers or smartphones. On the other hand, a cell tower distributes the signals over the defined area. Some towers are power boosters that enhance the signal strength.

What are the different types of base stations?

Some basic types of base stations are as follows: Macro-base stations are tall towers ranging from 50 to 200 feet in height, placed at strategic locations to provide maximum coverage in a given area. Those are equipped with large towers and antennas that transmit and receive radio signals from wireless devices.

What is a base station transceiver & a cell site router?

The main components on the ground are the base station transceivers. These are the counterparts to remote radio heads. older technologies such as 2G and 3G will have their own transceivers, separate from 4G/LTE. Cell site routers manage the traffic between the base station transceiver and the mobile switch at the central office.

What technology makes up a telecom tower site?

The technology that makes up most telecom tower sites can be boiled down to



three main categories: communications equipment, energy management, and sensors. The primary function of a tower is to transmit the data that makes up our communications networks. In order to accomplish this, the site uses several different pieces of equipment:.

What is a base transmitter station (BTS)?

Technically speaking, they are called Base Transmitter Stations (BTS). You might see 'cell site' and 'cell tower' used interchangeably, but these terms are not synonymous. A cell site or BTS encompasses all the equipment needed to transmit and process cellular signals between devices.



## Communication base station inverter tower type

---



### Telecoms base stations under siege of battery, ...

SIMON UTEBOR writes about the activities of bandits who steal telecoms backup batteries powering base stations allegedly in collusion with ...

### Power Base Station

Base station power refers to the output power level of base stations, which is defined by specific maximum limits (24 dBm for Local Area base stations and 20 dBm for Home base stations) ...



### Unraveling the Mysteries of Cell Towers and Base Stations

The base stations are meant to improve the signal frequency and communication between interconnected devices such as computers or smartphones. On the other hand, a cell tower ...

### Breaking Down Base Stations - A Guide to Cellular Sites

Let's start by taking a look at the different types of towers that you'll find at every cell site. A

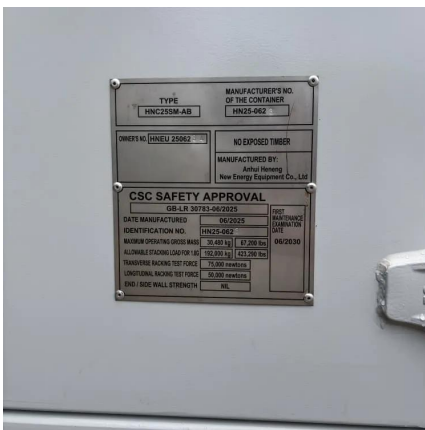


lattice or self-supporting tower uses a square or triangular base and a triangular ...



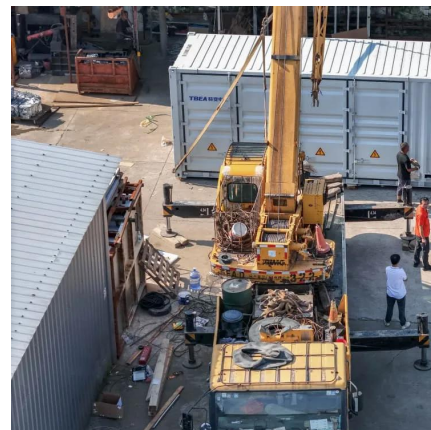
## Base Stations

They are referred to as cell towers or cellular antennas. These types of objects are an inevitability since they serve the purpose of providing signal transfer for data and voice ...



## [A Field Guide To The North American ...](#)

Technically speaking, they are called Base Transmitter Stations (BTS). You might see 'cell site' and 'cell tower' used interchangeably, but ...



## Blog -Communication Signal Tower Types & Design,Mobile Base ...

An Angular Steel Tower refers to a type of lattice tower used for various applications, including power transmission, telecommunication, and broadcasting. It is characterized by its angular or ...







## Communication Tower Foundation Selection Criteria

A spread footer foundation is the most common type of foundation used for self-supporting towers and the mast foundations for guyed towers. A spread footer is simply a large reinforced ...



## **What Is A Base Station?**

A base station is an integral component of wireless communication networks, serving as a central point that manages the transmission and ...



## **Thermoelectric Cooling for Base Station and Cell Tower Equipment**

Temperature control of sensitive telecom electronics in unattended mobile base stations and cell towers is vital for the operation of primary and back-up systems. Heat can ...



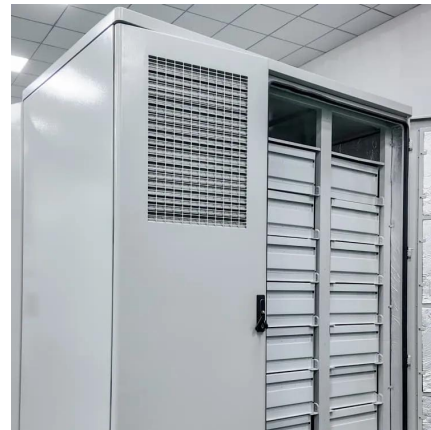
## **Blog -Communication Signal Tower Types & Design, Mobile Base Station**

An Angular Steel Tower refers to a type of lattice tower used for various applications, including power transmission, telecommunication, and broadcasting. It is characterized by its angular or ...



## Base Stations and Energy Levels

Base stations are often referred to as towers or cell sites, but they are literally the equipment that houses the radio transmitters and receivers that carry the signal to wireless ...



## [A Field Guide to American Communications Towers](#)

In this article, I will focus on a specific type of communications ...

## Types of Base Stations

Macro-base stations are tall towers ranging from 50 to 200 feet in height, placed at strategic locations to provide maximum coverage in a given ...





## **Rooftop tower base station: the 'invisible communication giant' ...**

From a high altitude in the city, the tower base stations on rooftops resemble steel guardians standing at the top of various buildings. It belongs to a type of macro base station, usually ...

## [A Field Guide to American Communications Towers](#)

In this article, I will focus on a specific type of communications tower -- the cellular category.



## [Communication Base Station Inverter Application](#)

In communication base stations, since they usually rely on DC power, such as batteries or solar panels, while most communication equipment and other electronic ...



## **Lithium ion battery for telecom industry/towers/backup ...**

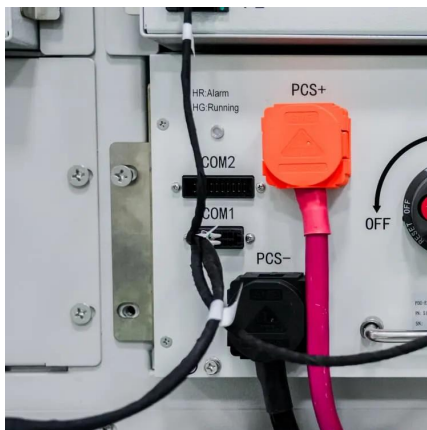
The construction of mobile communication base stations is an important part of social security. The stability of communication base stations is related to ...





## Types of Base Stations

Macro-base stations are tall towers ranging from 50 to 200 feet in height, placed at strategic locations to provide maximum coverage in a given area. Those are equipped with ...



## Blog -Communication Signal Tower Types & Design, Mobile Base Station

The cost of an angle steel tower compared to other tower types can vary based on several factors including design complexity, materials used, height of the tower, installation ...



## [Communication Base Station Inverter Application](#)

In communication base stations, since they usually rely on DC power, such as batteries or solar panels, while most communication ...





## Detailed explanation of inverter communication method

Usually, each inverter is equipped with a GPRS/4G data collection module. Through the built-in SIM card, the collected data is uploaded to the inverter company's server through the wireless ...



## Blog -Communication Signal Tower Types & Design,Mobile Base Station

A self-supporting tower, also known as a free-standing tower or a lattice tower, is a type of structure used to support antennas, communication equipment, and other infrastructure for ...

## Blog -Communication Signal Tower Types & Design,Mobile Base Station

A 4-legged angular steel telecom tower is a type of structure commonly used to support antennas and telecommunication equipment. These towers are known for their stability, strength, and ...



## Towers, Masts, and Poles Selection Guide: Types, ...

Mobile towers often include a telescoping tower that tilts up or folds down. They are suitable for emergency communications, two-way radio, remote base ...



## Blog -Communication Signal Tower Types & Design,Mobile Base Station

Emergency base station cabins, also known as mobile or portable base station cabins, offer several advantages in emergency situations. Here are some key advantages: 1. Rapid ...



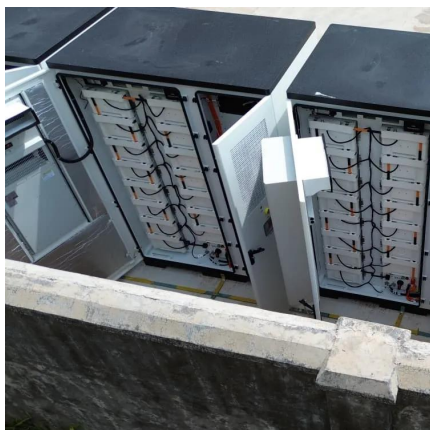
## Blog -Communication Signal Tower Types & Design,Mobile Base Station

Communication towers include new three-tube communication towers, traditional types of angle steel towers and guyed wire towers, etc. The design of the tower is aimed at the problems of ...

## A Field Guide To The North American Communications Tower

Technically speaking, they are called Base Transmitter Stations (BTS). You might see 'cell site' and 'cell tower' used interchangeably, but these terms are not synonymous.





## Unraveling the Mysteries of Cell Towers and Base ...

The base stations are meant to improve the signal frequency and communication between interconnected devices such as computers or smartphones. On the ...

### Base Stations (Cell Towers)

Tower Types: Cell towers come in various forms, including traditional lattice towers, monopoles, disguised towers (designed to blend with their surroundings), and rooftop installations. The ...



### Base Stations and Energy Levels

Base stations are often referred to as towers or cell sites, but they are literally the equipment that houses the radio transmitters and receivers ...

## Contact Us

For catalog requests, pricing, or partnerships, please visit:  
<https://www.talbert.co.za>