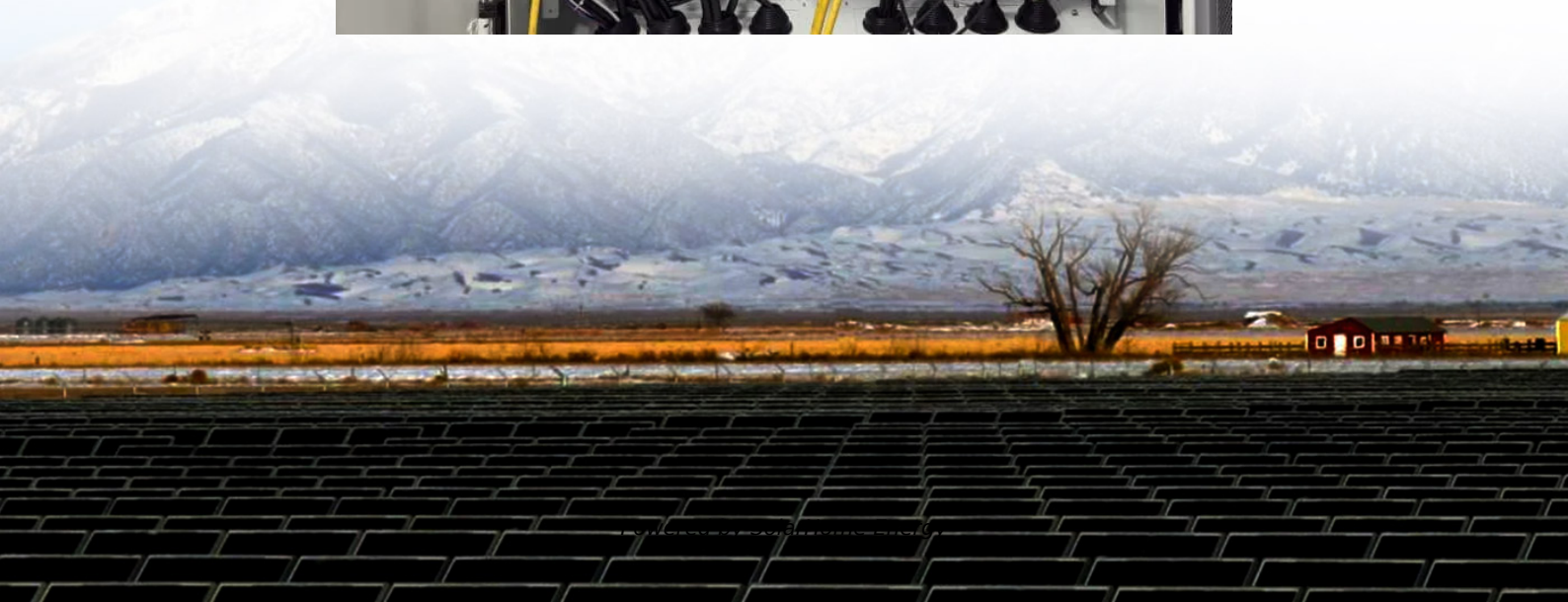


Communication base station inverter protection safety level





Overview

Are tower-mounted amplifiers and advanced antenna systems protected from electrical hazards?

This article dives into protecting tower-mounted amplifiers and advanced antenna systems of 5G macro base stations from electrical hazards. The next generation of cellular communication, 5G technology, offers increased speed, greater consistency, and lower latency.

How do you support a base station when AC power is interrupted?

A backup battery (block 5) is one of the best ways to support the base station when AC power is interrupted. Support the base station by: Providing a fast-acting fuse on the battery circuit for overload protection. Monitoring battery temperature rise to ensure battery safety.

How do you support a base station?

Support the base station by: Providing a fast-acting fuse on the battery circuit for overload protection. Monitoring battery temperature rise to ensure battery safety. Placing surface mount thermistors on the battery pack modules. Protecting the battery pack modules from overcharging.

How much exposure can a radio base station have?

On the ground, in houses, and other places where people reside, the exposure levels from radio base stations are normally below 1 percent of the limits. Only in the close vicinity of the antennas can the exposure limits sometimes be exceeded.

Why do baseband units need electrical protection?

Figure 6. Baseband Units need electrical protection at the power circuits, processors, and I/O lines. The BBU links the AAS and the wireline infrastructure, encoding transmissions and decoding received signals while processing data from calls and transmissions.



What is a macro base station?

Macro base stations reside on towers ranging in height from 50 ft. to 200 ft. These are highly visible structures and strategically located to maximize coverage within a defined geographic area. The base station connects to all wireless devices attempting communication within that geographic or coverage area.



Communication base station inverter protection safety level

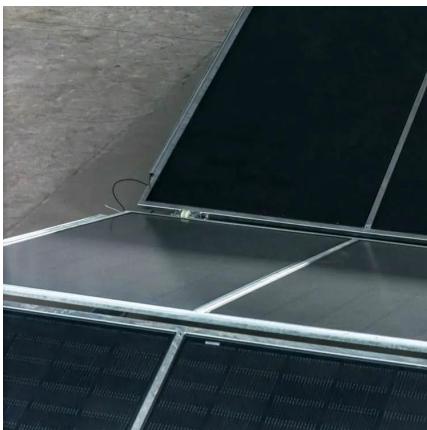


15 important functions of solar inverter protection - TYCORUN

Solar inverter is one of the essential core components in solar power generation applications. In addition to affecting the power generation of the entire system, it also plays a ...

Smart Safety Technology for PV Plants

In central inverter solutions, fuses are usually used for overcurrent protection at the module level, string level, and combiner box level. Due to unmatched model selection, disconnection ...



Wireless Network Base Station AC and DC Power Line ...

The Littelfuse high-power TVS Diode Series, including the AK, LTKAK, SMTOAK2, and SMTAK3, are specifically designed for applications that require high energy transient voltage protection.

How to safeguard cellular base stations from five ...

Begin with a detailed description of a macro base station and recommendations for protecting the

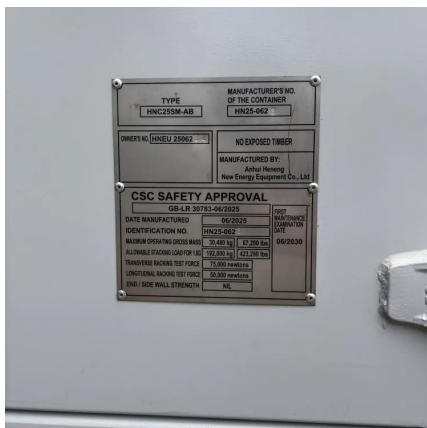


base station circuitry. Two crucial focus ...



Mr. Guo-qing LI Professor Senior Engineer China Academy ...

Article 35 of the Regulations stipulates that "for the establishment of large-scale wireless radio stations (stations) and ground public mobile communication base stations, their station layout ...



Proteus PV Stations

New Gamesa Electric Proteus PV Stations High-power PV Inverter family Maximum power with large flexibility for best LCoE Gamesa Electric Proteus ...



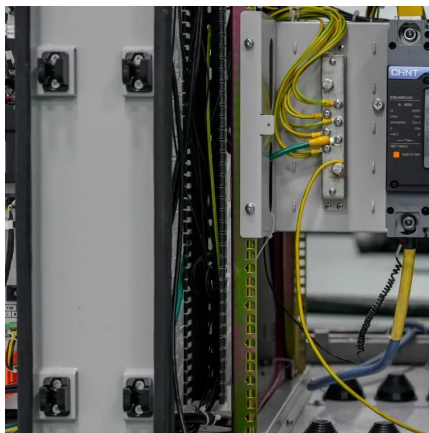
ICNIRP , Base Stations

Over large distances, the signals must be relayed by a communication network comprising base stations and often supported by a wired network. The power of a base station varies (typically ...



EMF

When base stations are located close to users, the transmitter power required by the mobile phone and the base station to communicate is relatively low. If base stations were located ...

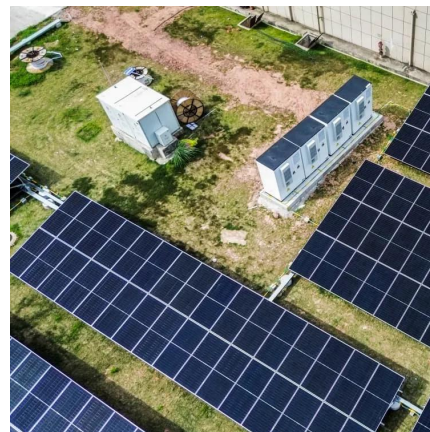


[Communications System Power Supply Designs](#)

Unique solutions for DSL, VoIP and 3G Base Stations illustrate the wide range of power system architectures and the opportunities available for higher level integration. The input voltage ...

Protecting 5G Macro Base Station Amplifiers and Antennas From

This article dives into protecting tower-mounted amplifiers and advanced antenna systems of 5G macro base stations from electrical hazards.



EN / PVS-100/120 MVS hardware manual

Allowed usage The PVS-100/120 medium voltage station (MVS) is designed to transform AC current from a group of inverters and finally feed to a medium voltage grid. Use the MVS only ...



How to safeguard cellular base stations from five electrical hazards

Begin with a detailed description of a macro base station and recommendations for protecting the base station circuitry. Two crucial focus areas are the tower-mounted amplifier ...



Electromagnetic Assessment on Human Safety of Mobile Communication Base

In this paper, using in-situ measurement approach, the human exposure level to electromagnetic fields radiated from the base stations in residential areas is studied with a broadband field ...

Cooling for Mobile Base Stations and Cell Towers

BackgroundUnattended base stations require an intelligent cooling system because of the strain they are exposed to. The sensitive telecom equipment is ...



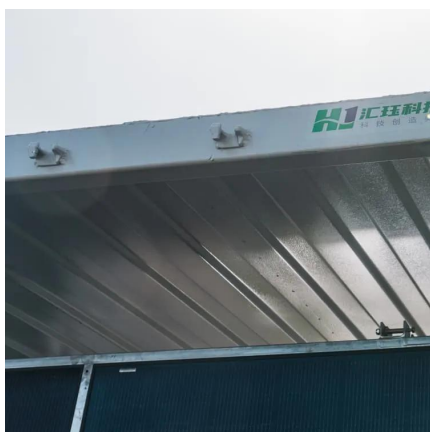


LMrev2005_Final.book

1.1 Purpose and Scope This manual provides design, engineering, acquisition, installation, and maintenance direction and guidance for implementation of effective lightning protection for use ...

Maintenance of communication base station power supply system

This article discusses how to improve the power supply safety of the power supply system of communication base stations, reduce the failure rate of the power supply system of ...



Switching & Protection solutions for Power Conversion ...

The PCS requires appropriate protection and switching on the AC and DC side. In addition, the protection devices must provide communication connectivity with the BESS control system.

Communication Base Station Safety Standards , Huijue Group E ...

As 5G deployments accelerate globally, communication base station safety standards face unprecedented challenges. Did you know that 68% of urban base stations now operate ...



Base stations and networks

Base station antennas are installed in such a way that radio-wave exposure in public areas is well below the established safety limits. Mobile phones and other mobile devices require a network ...



9.5.2 Communication System

Mobile, hand-held units are used for direct, unit-to-unit communication via the base station. These units are robust, highly reliable and can withstand the harsh operating environment of the facility.



Mobile Phone Base Stations and RF Radiation , IMDA

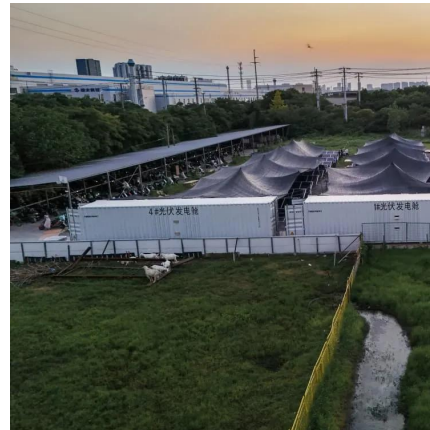
IMDA works closely with the National Environment Agency (NEA), the national authority for radiation protection, to ensure that RF radiation ...





Protecting 5G Macro Base Station Amplifiers and ...

This article dives into protecting tower-mounted amplifiers and advanced antenna systems of 5G macro base stations from electrical hazards.



Base stations and networks

Mobile, hand-held units are used for direct, unit-to-unit communication via the base station. These units are robust, highly reliable and can withstand the harsh operating environment of the facility.

Improving Safety in EV Traction Inverter Systems

In order to achieve a necessary level of safety, especially in regard to International Organization for Standardization (ISO) 26262 standards, subsystems within a vehicle such as the traction ...



Telecom Base Station , Outdoor Electronics Vents

The outdoor communication base stations, especially those installed in remote areas, are exposed to harsh geological environment, facing threats from sand, dust, rain, and scorching ...



Surge Protection for Cell Sites

A thorough lightning and surge protection approach provides optimal safety for people and high availability systems. LSP designs specialized AC and DC Surge Protection ...



CELL PHONE TOWER BASE STATION SAFETY AND ...

Overall, the proposed safety and security system offers a comprehensive approach to ensure the reliability and protection of cell phone tower base stations, contributing to the resilience of ...

Contact Us

For catalog requests, pricing, or partnerships, please visit:
<https://www.talbert.co.za>