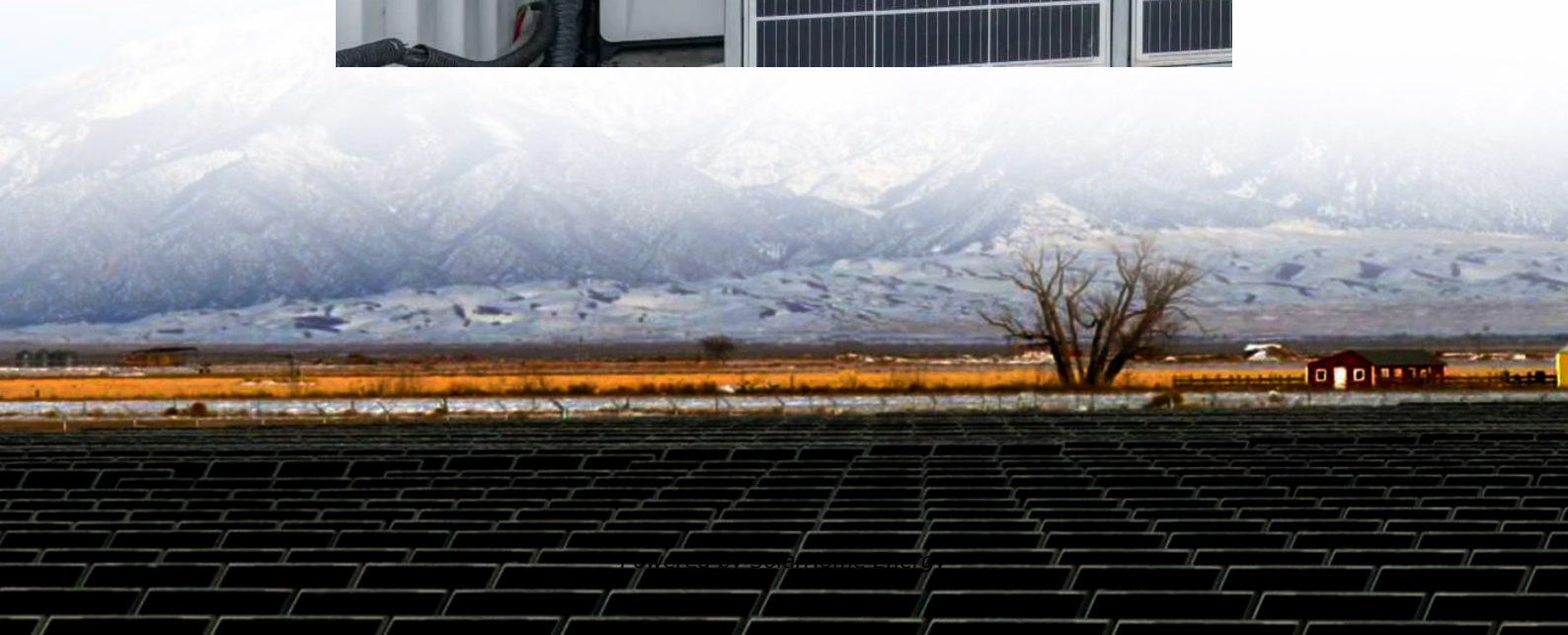


Communication base station electric shock





Overview

What does a base station do?

The base station is a fixed transceiver that acts as the primary transmission and reception communication hub for wireless devices. The base station modulates baseband information and transmits it to mobile devices. Base stations also receive mobile device transmissions, modulate them, and send them to the wireline infrastructure.

How do you support a base station?

Support the base station by: Providing a fast-acting fuse on the battery circuit for overload protection. Monitoring battery temperature rise to ensure battery safety. Placing surface mount thermistors on the battery pack modules. Protecting the battery pack modules from overcharging.

How do you support a base station when AC power is interrupted?

A backup battery (block 5) is one of the best ways to support the base station when AC power is interrupted. Support the base station by: Providing a fast-acting fuse on the battery circuit for overload protection. Monitoring battery temperature rise to ensure battery safety.

Why do baseband units need electrical protection?

Figure 6. Baseband Units need electrical protection at the power circuits, processors, and I/O lines. The BBU links the AAS and the wireline infrastructure, encoding transmissions and decoding received signals while processing data from calls and transmissions.



Communication base station electric shock

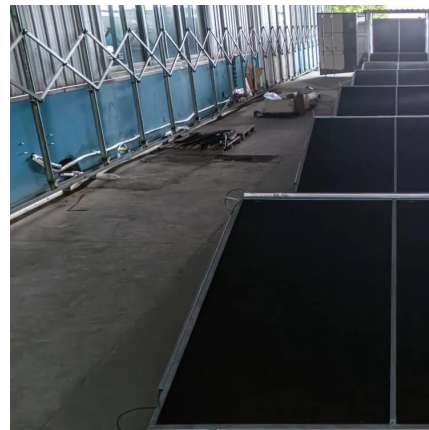


Arc Fault Circuit Interrupter for Photovoltaic Fire and Electric Shock

Arc Fault Circuit Interrupter for Photovoltaic Power Plant to Avoid Fire and Electric Shock Risks Statistics show that over 80% of PV power station fires are caused by faults on the DC side--a ...

Amateur Radio Grounding: Why is it Important

One of the primary purposes of grounding in amateur radio is to protect equipment and operators from electrical faults and surges. By establishing a low-resistance path to the Earth, grounding ...



Strategy of 5G Base Station Energy Storage Participating in ...

The energy storage of base station has the potential to promote frequency stability as the construction of the 5G base station accelerates. This paper proposes a control strategy for ...

Lithium battery is the magic weapon for ...

Intelligent energy storage lithium battery can effectively protect the base station battery in the



event of the accidental short circuit, lightning shock, ...



Base Station System Structure

2 Base Station Background The intent of this section is to explore the role of base stations in communications systems, and to develop a reference model that can be used to describe and ...



The applied effect analysis of he preview & related info , Mendeley

The high electric power consumption of air conditioning in communication base station needs to be solved urgently. This paper presents a new technology to discharge excess heat from a ...



Development of Prototype WiMAX Base Station

WiMAX is the technology that enables high speed data communication while moving an outdoor large area like a mobilephone. The authors have developed a WiMAX base station complied ...





LLVD & BLVD in Base Station Power Cabinets

LLVD and BLVD Protection in Base Station Power Cabinets Introduction In modern communication networks, base stations, as core infrastructure, are crucial for stable operation. ...



Does a Ham Radio Need to Be Grounded? Essential ...

A ham radio does need to be grounded to ensure electrical safety and reduce the risk of damage during lightning strikes or electrical surges. Proper grounding helps to direct ...

Electrical Safety

Electrical shock occurs when the body becomes part of the electric circuit, either when an individual comes in contact with both wires of an electrical circuit, one ...



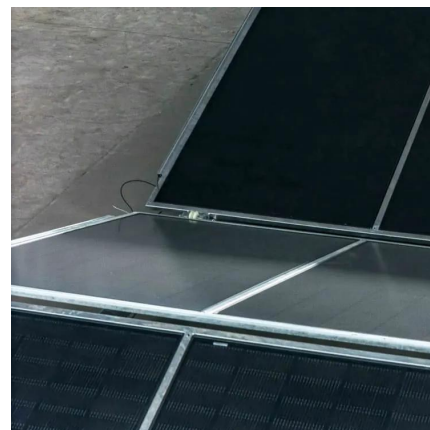
Protecting 5G Macro Base Station Amplifiers and Antennas From

This article provides a detailed description of a macro base station and offers recommendations for protecting the base station circuitry, namely the tower-mounted amplifier ...



TB9400 Base Station/Repeater

Explore the TB9400 base station, the foundation of a Tait P25 Phase 2-upgradable system. Access white papers and specification documents for details.



Collaborative optimization of distribution network and 5G base stations

In this paper, a distributed collaborative optimization approach is proposed for power distribution and communication networks with 5G base stations. Firstly, the model of 5G ...

Protecting 5G Macro Base Station Amplifiers and Antennas From

One of the primary purposes of grounding in amateur radio is to protect equipment and operators from electrical faults and surges. By establishing a ...



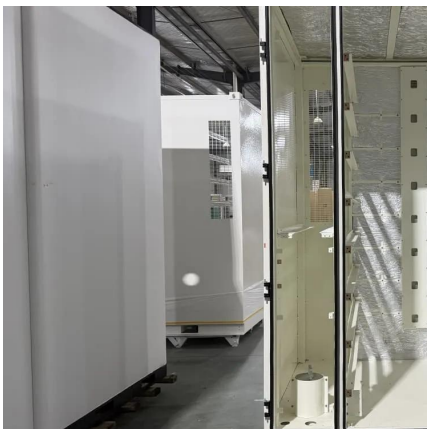


Biological effects from exposure to electromagnetic ...

The siting of cellular phone base stations and other cellular infrastructure such as roof-mounted antenna arrays, especially in residential neighborhoods, is a ...

Communication Base Station Surge Protection: Safeguarding ...

Communication base station surge protection systems stand as silent guardians against such disruptions. With 23% of telecom downtime incidents in 2023 attributed to electrical surges ...



Innovative Products , N-Tech Korea , Anti Electric Shock Device

The mass distribution of computers, the broadening of information and communication networks, and the increasing supply of equipment, such as semiconductor application devices, are ...

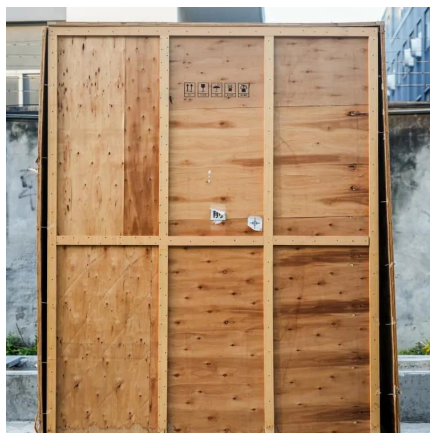
What is a Nuisance Shock?

Have you ever gotten a little shock from touching a parked car or a random metal object when you've been near a power line? Such shocks are startling and a bit of a nuisance, yet rest ...



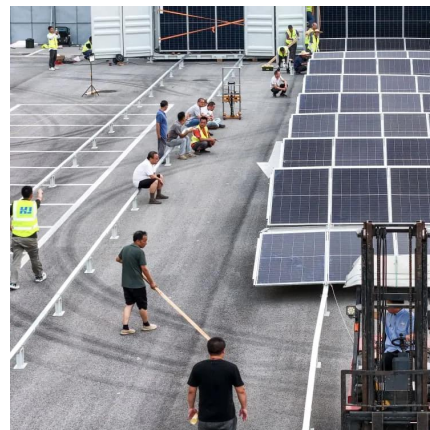
Base Station's Role in Wireless Communication Networks

What is a base station? A base station is a critical component of wireless communication networks. It serves as the central point of a network that connects various devices, such as ...



Health effects of electromagnetic fields on children

EMFs are invisible and generated from electrical lines, transmission towers, telecommunications, home appliances, mobile phones, WiFi, and base stations. An increasing number of children ...



[Mobile Phone Base Stations EMF / Health Fact Pack](#)

This process is called a 'handover' - literally where the network hands over the call from one base station to another, and it is undertaken seamlessly and without the caller being aware of the ...



Lithium battery is the magic weapon for communication base station

Intelligent energy storage lithium battery can effectively protect the base station battery in the event of the accidental short circuit, lightning shock, and other conditions, timely ...



(PDF) Research and Application of Anti-electric Shock Communication

In this paper, artificial intelligence and Internet of Things technology are applied to the communication system. The tag sensor is used in the monitoring system and is also used ...

(PDF) Research and Application of Anti-electric Shock ...

In this paper, artificial intelligence and Internet of Things technology are applied to the communication system. The tag sensor is used in the monitoring system and is also used ...



A Study on the Hazard Analyses of Construction for Base Station ...

While the new construction and rebuilt works have been rapidly increased, there has been not tried about the analysis as well as the control of hazards for the construction works.



Model MT-6352/VRC Electrical Equipme Mounting Base

It may be equipped with shock or vibration isolation devices and/or wires, cables, terminal boards, connectors, etc. Excludes base, electrical equipment rack and mount, resilient. See also rack, ...



How to safeguard cellular base stations from five electrical ...

Begin with a detailed description of a macro base station and recommendations for protecting the base station circuitry. Two crucial focus areas are the tower-mounted amplifier ...

Contact Us

For catalog requests, pricing, or partnerships, please visit:
<https://www.talbert.co.za>