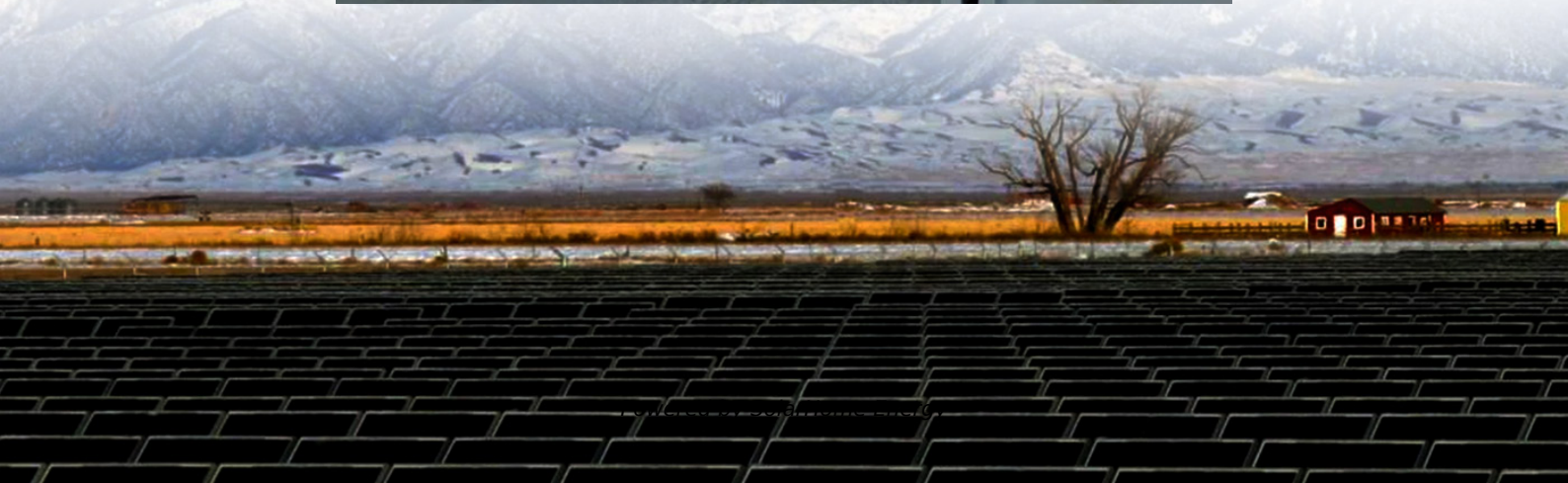


# **Communication base station EMS third-party construction and operation**





## Overview

---

What is an in-building emergency responder Communications Enhancement System (Erces)?

An In-Building Emergency Responder Communications Enhancement System (ERCES) is a wireless communications system used by first responder and emergency services personnel, such as police, fire, emergency medical, homeland security, and disaster response agencies.

What is emergency communications?

Emergency communications is a system of coordinating people and transmitting information to first responders during an emergency. Emergency communications includes: Describe the importance of communications in emergency response. Describe the role of CERT in communications during an activation. Describe how to use a communications plan.

How do emergency response groups communicate?

Instead, each CERT and jurisdictional office of emergency management has its own protocols for how emergency response groups coordinate communication. This is called a communications plan, and it defines who talks to whom.

How do CERT volunteers communicate with other emergency response agencies?

CERT volunteers act as the “eyes and ears” for other emergency response agencies by communicating through the ICS. A communications plan defines how different levels communicate during an emergency response situation. Different communications modes have different advantages and limitations during an activation.

Do Emergency Response Teams need a communications plan?

However, when multiple teams work together on a larger incident, and those



teams must coordinate with other emergency response organizations, we need a plan. A communications plan is a document that defines communications roles and establishes protocols for different groups during an emergency.

Why is communication important in emergency response?

Communications is a key component of emergency response. Effective communications allows for effective tactical emergency response. Ineffective communications will result in poorly managed emergency response and may result in increased dangers to the responders or civilians in the emergency.



## Communication base station EMS third-party construction and operation

---



### Basic radio communication & operation . PPTX

Radio communication systems play a key role in improving emergency medical services. They allow dispatchers, mobile units, and hospitals to stay connected. Base stations at fixed ...

### Base Emergency Communications System

BECS integrates, modernizes, standardizes, and enhances the Public Safety Communication emergency architecture to align with the Common Transport ...



### **Chapter 2: Preparatory Part 2 - Emergency Medical Responder**

This section explores the key elements of communication in EMS, focusing on the technologies used, best practices for effective communication, and the importance of maintaining robust ...

### Communications-EMT -- Hopper Institute®

Communication in EMS is essential. Patients must be able to access the system, the system



must be able to dispatch units, EMTs must have a means of communicating with medical direction ...



## Public Safety Primer

An In-Building Emergency Responder Communications Enhancement System (ERCES) is a wireless communications system used by first responder and ...

## Transportable base station for emergency communications

ASTRI has succeeded in producing a mobile base station that allows for cost-efficient, low-latency, and stable mission-critical mobile broadband communications for emergency services.



## REGIONAL

When combined, all of the communications systems comprise the regional MED-Radio communications system. This system alerts Emergency Medical Services (EMS) to incidents, ...





????

RTU (Remote Terminal Unit) plays a key role in energy management and optimal configuration in the integrated telecom base station solution. Its main work is to intelligently dispatch and ...



## EMT: Chapter 4

A special base station radio that receives messages and signals on one frequency and then automatically retransmits them on a second frequency.

## CERT Emergency Communications PM

Effective, clear, organized communications is essential in an emergency response. CERT volunteers will be part of a communications network when participating in an emergency ...



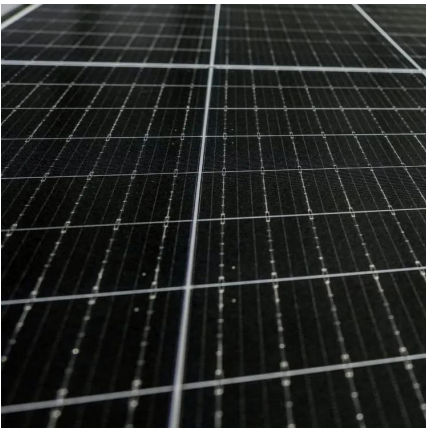
## Strategic Planning for Setting up Base Stations in ...

This paper analyses the accident-prone regions along the 94.5km stretch of Mumbai-Pune express highway to determine optimal base locations ...



### Transportable base station for emergency ...

ASTRI has succeeded in producing a mobile base station that allows for cost-efficient, low-latency, and stable mission-critical mobile broadband ...



### **fire science chapter 3 fire department communications**

there are two broad categories of telecommunications systems: (1) Emergency service specific telecommunications center - separate telecom or dispatch centers that the fire dpt, ems, or law ...

### Module 3: Emergency Communications Technology

Communications for testing purposes required for the proper station and system maintenance c. Communications directly related and necessary to those activities which make the licensee ...





## Communication Base Station

The design and implementation of Tian-Power's communication backup solution aims to ensure the normal operation of the communication system in the event ...

## [EMS Chapters 5-6 Flashcards , Quizlet](#)

Your EMS agency wants to increase the power output of the base station in order to cover a larger area without needing a repeater. Which federal agency is responsible for establishing ...



## Strategic Planning for Setting up Base Stations in Emergency ...

This paper analyses the accident-prone regions along the 94.5km stretch of Mumbai-Pune express highway to determine optimal base locations for dispatching ...

## Public Safety Primer

An In-Building Emergency Responder Communications Enhancement System (ERCES) is a wireless communications system used by first responder and emergency services personnel, ...





## Statewide EMS Operations & Communications Resource ...

This Emergency Medical Services (EMS) Operations and Communications Resource Manual has been developed by the State of California Emergency Medical Services ...



## Base Emergency Communications System

BECS integrates, modernizes, standardizes, and enhances the Public Safety Communication emergency architecture to align with the Common Transport Layer and Services infrastructure ...



## Designing Fire And EMS Stations: A Comprehensive Guide

Firefighter and Emergency Medical Services (EMS) personnel injuries at the station are much more common than recognized by the industry. Unfortunately, firefighter injury statistics, ...





## EMT Chapter 5 Flashcards , Quizlet

The FCC has jurisdiction over all radio operations nationally, including those in EMS systems. They license base stations, assign radio call signs, approve equipment for use, limit ...

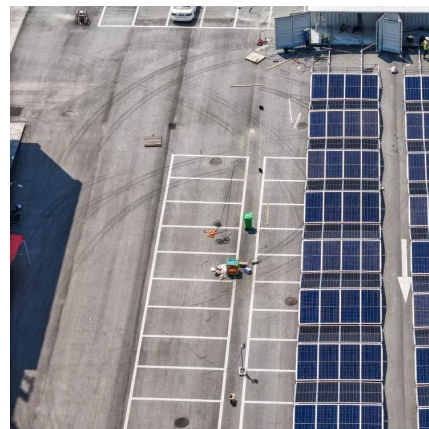


## Emergency Care, Fourteenth Edition, Chapter 17, ...

In some EMS systems, simple standard communications are transmitted by pushing a button on a mobile data terminal (MDT) mounted in the ambulance. Carry portable radio whenever you ...

## [OEM, EMS, CEM, ODM, CMO: What's the difference ...](#)

What do the terms OEM, EMS, CEM, ODM, and CMO mean? We explore what differentiates these key parts of the electronics manufacturing ...



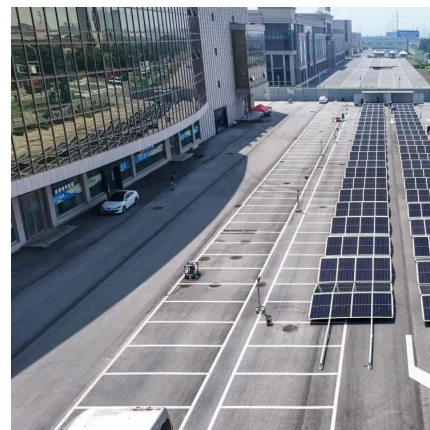
## Microsoft Word

communications system--a collection of individual communication networks, transmission system, relay stations, control and base stations, capable of interconnection and ...



## Battery Energy Storage System Integration and Monitoring ...

The intelligent operation and maintenance platform of energy storage power station is the information monitoring platform of energy storage power station, which can monitor the ...

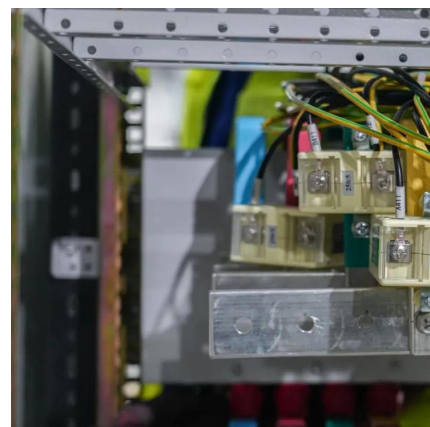


## Communication Base Station

The design and implementation of Tian-Power's communication backup solution aims to ensure the normal operation of the communication system in the event of a power outage or power ...

## [Communications System Technical Planning Guide](#)

The resultant document is intended to be a simple, practical technical planning guide for Emergency Medical Service (EMS) communications.





## Chapter 5 Communication Questions Flashcards , Quizlet

To ensure accuracy and synchronicity, most EMS systems use military time rather than standard A.M. and P.M. designations. Choose the military time that correctly represents 9:32 P.M. ...

## Contact Us

---

For catalog requests, pricing, or partnerships, please visit:  
<https://www.talbert.co.za>