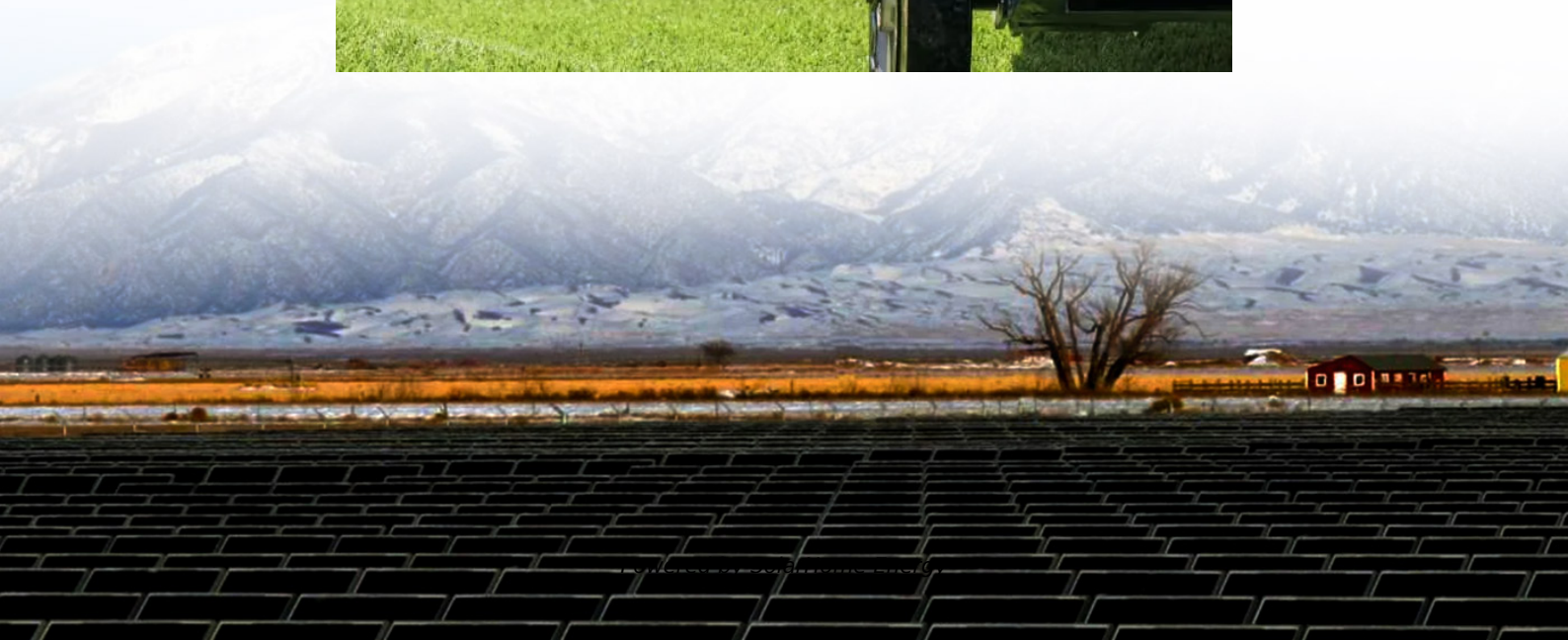


Communication base station EMS equipment industry





Overview

What is a base station?

A base station is a radio operated from a fixed site such as a dispatch center, hospital, or some other location. It usually runs off community electrical power and transmits at much higher power than smaller, portable radios. Alternative power in the form of generators or a set of batteries are usually available.

How does EMS radio communication work?

It may also convert the signal to a telephone signal and send the communications through public or dedicated telephone lines. EMS radio communication takes place in the VHF low band, VHF high band, and UHF band. VHF low band is the radio frequencies from 32-50 megahertz (MHz).

What frequency does EMS radio communication take place in?

EMS radio communication takes place in the VHF low band, VHF high band, and UHF band. VHF low band is the radio frequencies from 32-50 megahertz (MHz). They are able to follow the shape of the earth allowing communication over long distances. These frequencies are more susceptible to interference from, weather, buildings, and electrical equipment.

What is an in-building emergency responder Communications Enhancement System (Erces)?

An In-Building Emergency Responder Communications Enhancement System (ERCES) is a wireless communications system used by first responder and emergency services personnel, such as police, fire, emergency medical, homeland security, and disaster response agencies.

How does EMS rebroadcast a radio signal?

Some rebroadcast by converting signals to radio and others do so by converting to microwaves. It may also convert the signal to a telephone signal and send the communications through public or dedicated telephone lines.



EMS radio communication takes place in the VHF low band, VHF high band, and UHF band.

Why is communication important in EMS?

Communication in EMS is essential. Patients must be able to access the system, the system must be able to dispatch units, EMTs must have a means of communicating with medical direction and receiving facility, and EMTs must be able to communicate vital information to other personnel.



Communication base station EMS equipment industry



Chapter 2: Preparatory Part 2 - Emergency Medical Responder

This section explores the key elements of communication in EMS, focusing on the technologies used, best practices for effective communication, and the importance of maintaining robust ...

Public Safety Primer

Police radio and other public safety services, such as fire departments and Emergency Medical Services (EMS), have traditionally been found in the VHF and UHF parts of the spectrum ...



Guide for the Selection of Communication Equipment for ...

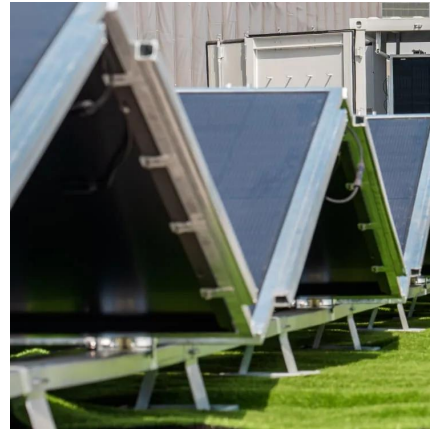
2. OVERVIEW OF COMMUNICATION SYSTEMS A communication system is made up of devices that employ one of two communication methods (wireless or wired), different types of ...

Public Safety Primer

Police radio and other public safety services, such as fire departments and Emergency Medical Services (EMS), have traditionally been found in



the VHF ...



[Ambulance Radios: Types And Uses , ShunAuto](#)

The use of base stations in EMS communication ensures a reliable and consistent connection. They are often equipped with alternative power ...

EMS , ERS Wireless

ERS Wireless boosts EMS with advanced radios, NG911 software, and dispatch solutions to improve emergency communications and response efficiency.



[EMS System Communications - georgiaemsacademy](#)

The base station radio generally sits on a desk and is programmed to transmit with increased power to overcome any obstacles or distance that could affect signal propagation.





Enhancing Fire-Rescue and EMS Operations with ...

Fire and rescue stations may need to adopt more sustainable practices, including green building designs, energy-efficient equipment, and ...



Communications-EMT -- Hopper Institute®

A base station is a radio operated from a fixed site such as a dispatch center, hospital, or some other location. It usually runs off community electrical power and transmits at much higher ...



Wisconsin Emergency Medical Services Communication Plan

Concerning EMS communications specifically, the concept of back-up communications as applied to base station or other fixed radio equipment means they must provide the following capabilities:



EMS , ERS Wireless

ERS Wireless offers dependable two-way radios and video cameras that are crucial for EMS for their ability to facilitate quick, reliable communication and provide situational awareness, ...



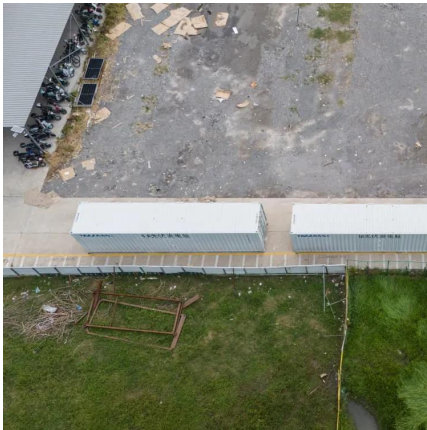
[Intelligent Telecom Energy Storage White Paper](#)

Dual-network integration and cloud-network synergy, The the energy flow through the information flow. The cloud network is linked together to implement intra-stati n and out-station ...

Effective Communication in EMS Systems: A Comprehensive Guide

Preview text Comprehensive Guide to Communication in EMS Systems Effective communication is a crucial aspect of Emergency Medical Services (EMS), ensuring the accurate and timely ...





What is Telecommunication Base Station , China Hop

What is telecommunication base station, let's learn about communication base stations. China telecom equipment supplier.

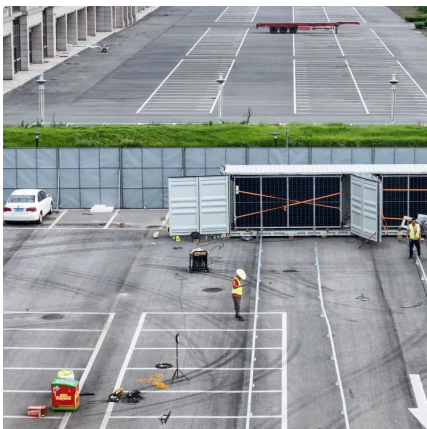
The Future of EMS & Public Safety Technology in 2025

In this article, we explore the top EMS technology trends for 2025, including AI-driven dispatch systems, FirstNet advancements, next-gen radio communications, and enhanced ...



????

By replacing the traditional DC distribution unit (DCDU) with the advanced base station DC load management unit (DLMS), we achieve precise branch metering and on-off control of different ...



Communication Base Station Equipment PCB Market

This Insight Report provides a comprehensive analysis of the global Communication Base Station Equipment PCB landscape and highlights key trends related to product segmentation, ...



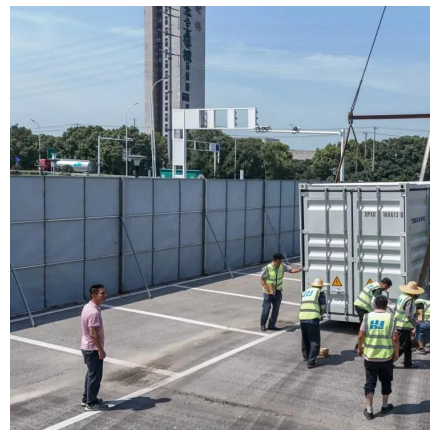
Microsoft Word

Sometimes, the base station is operated in the duplex mode, however, in EMS the portable or mobile radio is often operated in the duplex mode, and the base station at the ...



The Future of EMS & Public Safety Technology in 2025

In this article, we explore the top EMS technology trends for 2025, including AI-driven dispatch systems, FirstNet advancements, next-gen radio ...



[Ambulance Radios: Types And Uses . ShunAuto](#)

The use of base stations in EMS communication ensures a reliable and consistent connection. They are often equipped with alternative power sources, such as generators or ...





EMS Two-Way Radios for First Responders , EMS Accessories

Maintain dependable communication during emergencies with advanced emergency communication equipment tailored for EMS professionals. We offer a comprehensive range of ...



10 things you need to consider when it comes to your ...

10 things you need to consider when it comes to your EMS station Be sure to include ample space for sleep, fitness and other critical activities ...

Enhancing BESS Efficiency with Advanced EMS: Features, ...

Discover how an advanced Energy Management System (EMS) optimizes Battery Energy Storage Systems (BESS) through centralized monitoring, intelligent control, and ...



Communications Service Monitors , VIAVI Solutions Inc.

A Communications Service Monitor (CSM) is an integrated radio communication test solution combining the functionality of a signal generator, spectrum ...



[EMT Ch 13 Communications Flashcards , Quizlet](#)

Study with Quizlet and memorize flashcards containing terms like Communications Systems, Base stations, Mobile radios and more.



Microsoft Word

The MIEMSS EMS Communications Engineering Department has responsibility for designing, installing, and operating the State's Emergency Medical Resource Centers ...

Contact Us

For catalog requests, pricing, or partnerships, please visit:
<https://www.talbert.co.za>