

Communication base station EMS equipment and functions





Overview

What is a base station?

A base station is a radio operated from a fixed site such as a dispatch center, hospital, or some other location. It usually runs off community electrical power and transmits at much higher power than smaller, portable radios. Alternative power in the form of generators or a set of batteries are usually available.

How does EMS radio communication work?

It may also convert the signal to a telephone signal and send the communications through public or dedicated telephone lines. EMS radio communication takes place in the VHF low band, VHF high band, and UHF band. VHF low band is the radio frequencies from 32-50 megahertz (MHz).

What frequency does EMS radio communication take place in?

EMS radio communication takes place in the VHF low band, VHF high band, and UHF band. VHF low band is the radio frequencies from 32-50 megahertz (MHz). They are able to follow the shape of the earth allowing communication over long distances. These frequencies are more susceptible to interference from, weather, buildings, and electrical equipment.

How does EMS rebroadcast a radio signal?

Some rebroadcast by converting signals to radio and others do so by converting to microwaves. It may also convert the signal to a telephone signal and send the communications through public or dedicated telephone lines. EMS radio communication takes place in the VHF low band, VHF high band, and UHF band.

Why is communication important in EMS?

Communication in EMS is essential. Patients must be able to access the system, the system must be able to dispatch units, EMTs must have a means of communicating with medical direction and receiving facility, and EMTs must



be able to communicate vital information to other personnel.

How do you call EMS?

In many states, there are established training and performance standards for dispatch personnel. The most common method for accessing the EMS system is the telephone. In the late 70's and early 80's, callers became able to call 9-1-1 instead of worrying which number to call.



Communication base station EMS equipment and functions



What is the difference between Base Station and ...

The performance of base stations directly affects the service quality of mobile communication networks, including call quality, data transmission rate, ...

E74

EMS Verbal Communication Skills Interpersonal communication is the exchange of information, feelings, and meaning through verbal and nonverbal means. Verbal communication is the use ...



Dispatch 101: The ins and outs of communication centers

There are four basic types of communication centers. The stand-alone center is utilized by one specific fire department. A regional center serves many fire departments over a ...



Chapter 4 Flashcards

Study Flashcards On Chapter 4 at Cram . Quickly memorize the terms, phrases and much more. Cram makes it easy to get the grade you want!



Communications and Dispatching , Cooney's EMS Medicine

Describe common terms used in radio communication to communicate the status of a unit. Describe an emergency department base station and list types of individuals who may be ...



CERT Emergency Communications PM

Worse, if communications fails, first responders may find themselves in danger for which they are unprepared. Successful communications is essential to successful emergency response, while ...



Which of the following is NOT a function of the Federal Communications

A. monitoring all radio traffic and conducting field spot checks B. maintaining communications equipment on the ambulance C. licensing base stations and assigning ...





[EMT Ch 13 Communications Flashcards, Quizlet](#)

Study with Quizlet and memorize flashcards containing terms like Communications Systems, Base stations, Mobile radios and more.



EMT Chapter 5 Flashcards , Quizlet

The FCC has jurisdiction over all radio operations nationally, including those in EMS systems. They license base stations, assign radio call signs, approve equipment for use, limit ...

Mastering EMS Communication: The Essential Role of Base Station ...

Understanding the vital requirements for EMS communication, particularly the significance of a base station's height, is crucial for anyone preparing for the North Carolina EMT State Exam.
...



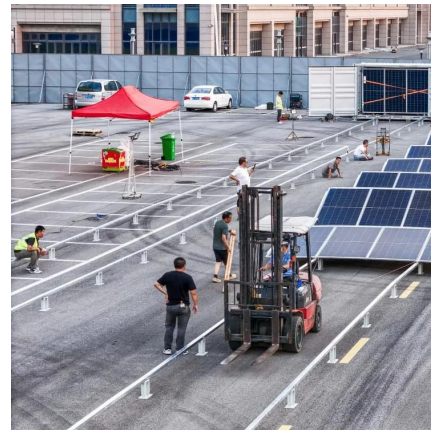
What Is A Base Station?

A base station is an integral component of wireless communication networks, serving as a central point that manages the transmission and
...



Guide for the Selection of Communication Equipment for ...

The RF communication equipment considered in this guide includes portable radios, mobile radios, base/fixed station radios, repeaters, and base station/repeaters.



[Chapter 5 questions 11-15 Flashcards](#), [Quizlet](#)

Study with Quizlet and memorize flashcards containing terms like 11. Identify components of the local dispatch communications system and describe their function and use. (121-122), 12. ...

Inland County EMS Agency

command and control center (central communications center)--A system which is responsible for establishing communications channels and identifying the necessary equipment and facilities ...





Chapter 2: Preparatory Part 2 - Emergency Medical Responder

This section explores the key elements of communication in EMS, focusing on the technologies used, best practices for effective communication, and the importance of maintaining robust ...

Mastering EMS Communication: The Essential Role of Base ...

Understanding the vital requirements for EMS communication, particularly the significance of a base station's height, is crucial for anyone preparing for the North Carolina EMT State Exam. ...



Chapter 4 Flashcards , Quizlet

Study with Quizlet and memorize flashcards containing terms like 1.Which type of communications equipment functions as a radio receiver and searches across several frequencies?, ...

Dispatch 101: The ins and outs of communication ...

There are four basic types of communication centers. The stand-alone center is utilized by one specific fire department. A regional center ...



Wisconsin Emergency Medical Services Communication Plan

Concerning EMS communications specifically, the concept of back-up communications as applied to base station or other fixed radio equipment means they must provide the following capabilities:



[Chapter 5: Communication Flashcards, Quizlet](#)

List the standard components of an EMS communications system. base station, mobile radios, portable radios, repeaters, digital equipment, and cell phones Explain the function of a ...



[EMS System Communications - georgiaemsacademy](#)

In a typical analog cell-phone system in the United States, the cell-phone carrier receives about 800 frequencies to use across the city. The carrier chops up the city into cells. ...





Chapter 5 Communication Questions Flashcards , Quizlet

One role of the FCC in EMS communications systems is to a. purchase base-station radio equipment. b. license base stations. c. serve as a repeater for base-station operations. d. ...



[EMS System Communications - georgiaemsacademy](#)

The Powerful Base Station Radio The base station radio generally sits on a desk and is programmed to transmit with increased power to overcome any obstacles or distance ...

[Communications-EMT -- Hopper Institute®](#)

A base station is a radio operated from a fixed site such as a dispatch center, hospital, or some other location. It usually runs off community electrical power and transmits at much higher ...



Wisconsin Emergency Medical Services Communication Plan

Provide specific information on EMS communications in Wisconsin. Serve as a "user's manual" for providers in creating and maintaining their EMS communications. Provide an update to current ...



Contact Us

For catalog requests, pricing, or partnerships, please visit:
<https://www.talbert.co.za>