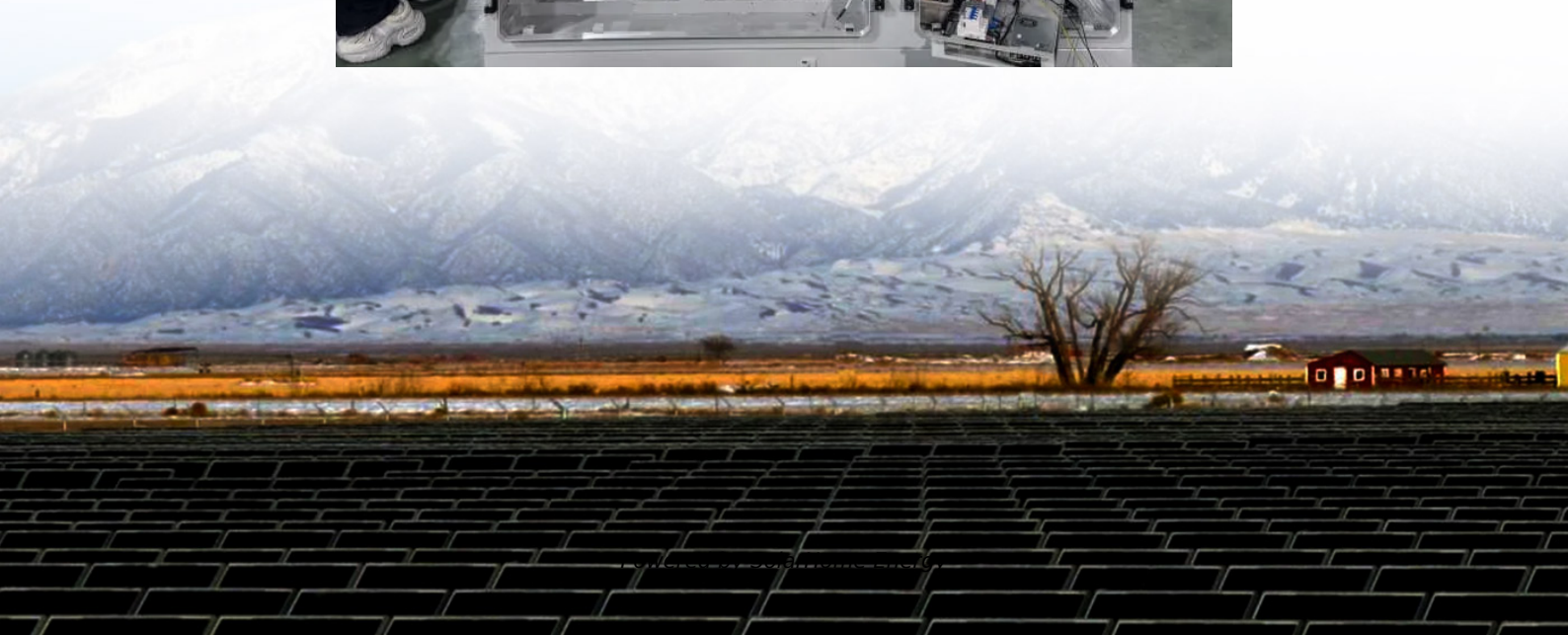


Communication 5g base station equipment Huawei





Overview

What is a Huawei base station?

Let's dive into a technical explanation. A base station, also known as an eNodeB (for 4G LTE) or gNodeB (for 5G NR) in Huawei's terminology, is a piece of equipment that facilitates wireless communication between user equipment (UE) like smartphones, tablets, and IoT devices, and the core network of the telecommunications provider.

Does Huawei offer a 5G network?

As the world transitions from 4G LTE to 5G, Huawei's equipment has become central to many mobile operators' strategies. The company offers a wide range of 5G solutions, including base stations, antennas, core network components, and software-defined networking tools.

How many 5G base stations does Huawei have?

The contracts have been split into two projects, with the first covering 63,800 base stations using 2.6GHz to 4.9GHz spectrum, while the second covers 23,141 in the 700MHz band. Huawei is estimated to have secured 45,426 5G base stations worth an estimated 4.1 billion yuan (US\$574 million).

How does Huawei 5G ran work?

One of the standout features of Huawei's 5G RAN equipment is its implementation of Massive MIMO (Multiple Input, Multiple Output). This technology uses a large number of antennas at the base station to improve spectral efficiency and increase network capacity.

What is a 5G network architecture?

The following describes the concepts needed to understand 5G network architectures: Evolved Packet Core (EPC): an LTE core network. EPC is classified into two types: traditional LTE core network (supporting access through LTE base stations) and upgraded LTE core network (also called EPC+,



supporting access through 5G base stations).

What is Huawei 5G core?

Huawei's 5G Core is built on a cloud-native architecture, which means it uses microservices, containers, and service-based interfaces (SBI) to provide flexibility and scalability. Supports network slicing for customized services. Enables rapid deployment and scaling of network functions. Improves fault isolation and service resilience.



Communication 5g base station equipment Huawei

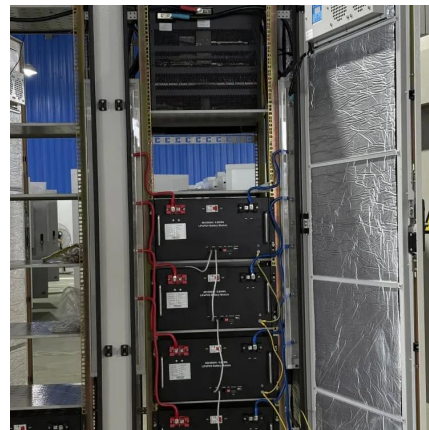


AI in the 5G-A Era: Scenarios, Key Technologies, and ...

This paper explores the evolution trend of AI, analyzes its key values in 5G-A networks, and discusses emerging application scenarios.

Technical Requirements and Market Prospects of 5G Base Station ...

With the rapid development of 5G communication technology, global telecom operators are actively advancing 5G network construction. As a core component supporting ...



5G-A Receivers to Supplement 5G Base Stations, ...

Shenzhen-based Huawei and China Mobile deployed nearly one thousand 5G-A base stations in Beijing, Shanghai, Hangzhou, and Shenzhen ...

Huawei Releases 5G Series Products to Expand Multi ...

At the 2021 Mobile World Congress (MWC 2021) in Barcelona, Huawei launched a series of 5G



products and solutions oriented to "1+N" 5G ...

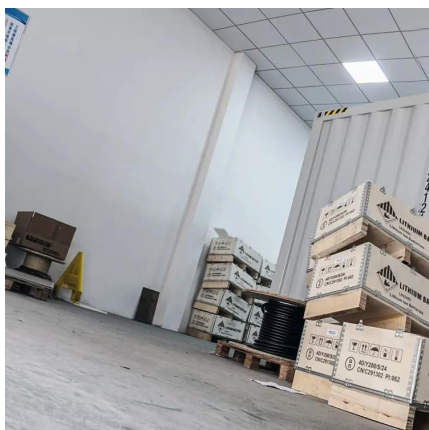
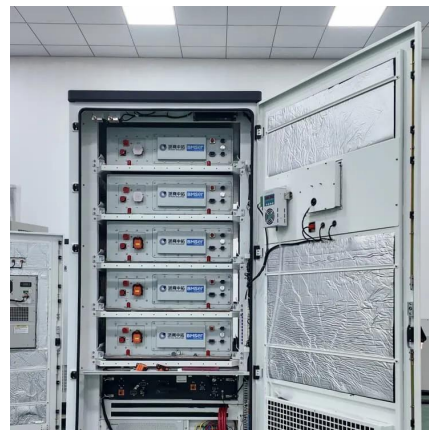


Base Station Huawei BBU5900 Series 5G LTE UBBPF1 ...

The Huawei BBU5900 Series Base Station, equipped with essential modules like UBBPF1, UBBPG2D, UMPTE3, UMPTE5, and UPEUE, stands out as a powerful, flexible, and energy ...

HUAWEI UBBPd6: The Backbone of 5G Wireless Communication

The HUAWEI UBBPd6 baseband board is a cornerstone of modern wireless communication, playing a vital role in enabling 5G networks and beyond. Its high-performance ...



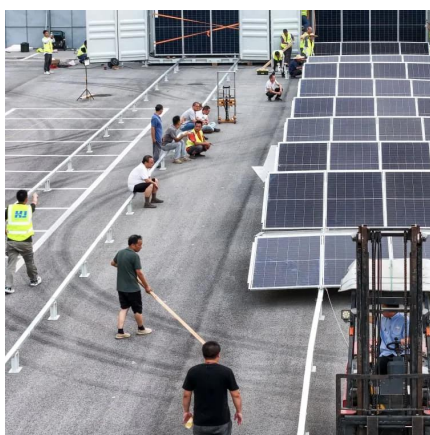
Three companies to own 74.5% of base station ...

TrendForce estimates that Huawei, Ericsson, and Nokia will account for 74.5% of the global base station market in 2022.



DBS5900 Distributed Base Stations -- Huawei Enterprise

The DBS5900 can meet the needs of industry users for wireless broadband access and multimedia critical communication, and obtain better coverage and user experience. The ...

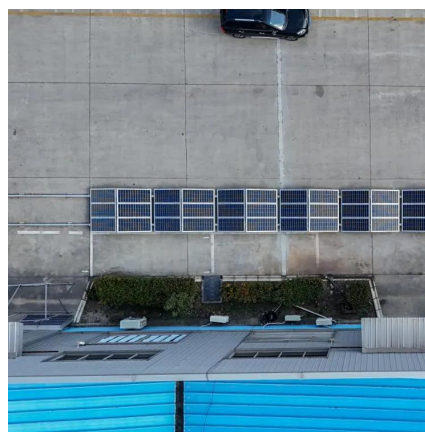


Huawei wins huge share of China Mobile's 5G base ...

In total, Huawei has won 52 percent of China Mobile's 5G base station work, as part of the largest portion of the contracts put out for tender ...

Huawei is the world largest 5G base station equipment vendor

Huawei is the world largest 5G base station equipment vendor. The company remains ahead of the like of Ericsson and Nokia.



What is huawei base station

Huawei's base stations, such as the DBS5900 and DBS3900, are advanced wireless access devices designed to support various network technologies, including 4G LTE and 5G NR. ...



Huawei vs. Samsung: who leads the global ...

In a market landscape fraught with geopolitical tensions, Huawei has managed to retain its top position globally in the communication ...



5G-oriented Site Evolution

Poles need to be upgraded, and site foundations must be reinforced. 3. Energy Reconstruction In the 5G era, the power consumption of main equipment will ...

How many countries have deployed Huawei's 5G base stations, ...

Huawei has deployed its 5G base stations in several countries worldwide, including China, South Korea, UAE, Switzerland, and Canada. The deployment has had a significant impact on ...





[Huawei UBBPg2 03058626 For Base Station](#)

The Huawei UBBPg2 baseband board is a cutting-edge product designed for modern wireless communication equipment, particularly in 5G networks. This baseband board is a crucial ...

huawei base station

A Huawei base station is a critical component in modern telecommunications networks, specifically in cellular networks like 4G LTE and 5G NR. Let's dive into a technical ...

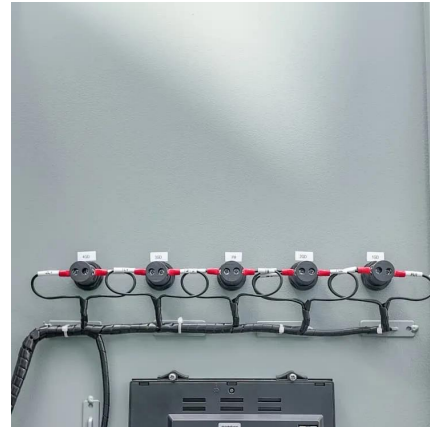


Huawei wins huge share of China Mobile's 5G base station ...

In total, Huawei has won 52 percent of China Mobile's 5G base station work, as part of the largest portion of the contracts put out for tender this year, according to Yicai Global.

MWC24: Huawei Launches Net5.5G Solutions for Carrier Growth

Huawei's base station routers provide comprehensive access capabilities with 25/50/100/400GE to achieve network construction with optimal TCO. This solution is ...



[Base Station Huawei BBU5900 Series 5G LTE ...](#)

The Huawei BBU5900 Series Base Station, equipped with essential modules like UBBPF1, UBBPG2D, UMPTE3, UMPTE5, and UPEUE, ...



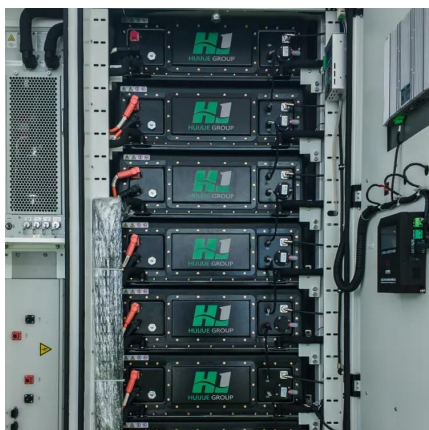
Huawei: A Real 5G Innovation - Huawei's 5G Base Station

What does Huawei's 5G base station look like? Here's also a glimpse of some of its superior features. #Real5G



5G-A Receivers to Supplement 5G Base Stations, Huawei ...

Shenzhen-based Huawei and China Mobile deployed nearly one thousand 5G-A base stations in Beijing, Shanghai, Hangzhou, and Shenzhen in the first half of this year, Sun ...





HUAWEI UBBPd6: The Backbone of 5G Wireless ...

The HUAWEI UBBPd6 baseband board is a cornerstone of modern wireless communication, playing a vital role in enabling 5G networks and ...

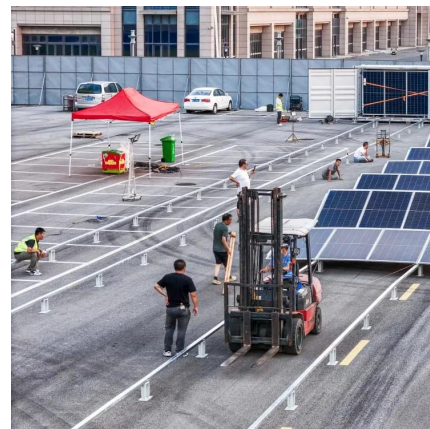


3900 Series Base Station Product Description

Provides CPRI ports for communication with RRUs and processes uplink and downlink baseband signals. Manages the base station by means of operation and ...

5g-huawei-equipment-features

In this article, we will explore the key features, technologies, and benefits of Huawei's 5G equipment in detail, providing both technical insights and practical examples for telecom ...



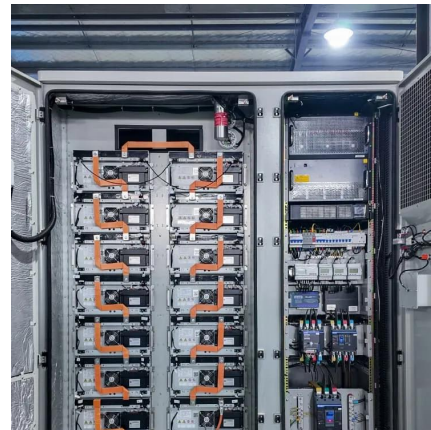
Huawei Launches New-Generation 5000 Series Base ...

Today at the Mobile World Congress 2017, Huawei has launched its 5000 series base station. Innovative technologies empower mobile operators ...



5G-Advanced Architecture Evolution: An Analysis ...

By the end of November 2022, there were 2.287 million 5G base stations in China. The China Academy of Information and Communications Technology ...



5G Network Architectures and Technologies

SA uses an end-to-end 5G network architecture, where 5G standards are used on terminals, base stations, and core networks. SA supports a variety of 5G new services, including eMBB, ...

Contact Us

For catalog requests, pricing, or partnerships, please visit:
<https://www.talbert.co.za>