

Communication 5g base station can be used with general





Overview

What is a 5G base station?

As the world continues its transition into the era of 5G, the demand for faster and more reliable wireless communication is skyrocketing. Central to this transformation are 5G base stations, the backbone of the next-generation network. These base stations are pivotal in delivering the high-speed, low-latency connectivity that 5G promises.

How does the architecture of a base station affect 5G?

The architecture and shape of the base station directly affect how the 5G network is deployed. In the technical standards, the frequency band of 5G is much higher than that of 2G, 3G and 4G networks.

What is a 5G baseband unit?

The 5G baseband unit is responsible for NR baseband protocol processing, including the entire user plane (UP) and control plane (CP) protocol processing functions, and provides a backhaul interface (NG interface) with the core network and an interconnection interface (Xn interface) between base stations).

What are the advantages of a 5G base station?

Massive MIMO: The use of a large number of antennas allows the base station to serve multiple users simultaneously by forming multiple beams and spatially multiplexing signals. **Modulation Techniques:** 5G base stations support advanced modulation schemes, such as 256-QAM (Quadrature Amplitude Modulation), to achieve higher data rates.

What frequency bands do 5G base stations use?

Utilization of Frequency Spectrum: 5g Base Stations Operate in specific Frequency Bands Allocated for 5G Communication. These bands include Sub-6 GHz Frequencies for Broader Coverage and Millimeter-Wave (Mmwave)



Frequencies for Higher Data Rates.

Will 4G base stations be upgraded to non-standalone 5G?

Upgrading 4G base stations by software to non-standalone (NSA) 5G will still require hardware changes. It will act as an interim, but it will still not satisfy the need for true 5G network architecture. The number of base stations needed increases with each generation of mobile technology to support higher levels of data traffic.



Communication 5g base station can be used with general



Investigating the Sustainability of the 5G Base Station ...

5G is the next generation of wireless communication technology that will significantly improve network bandwidth and decrease latency. There are two key wireless communication ...

5G base stations

What Is a 5G Base Station? A 5G base station (BS) is a critical component in a mobile network that connects devices, such as smartphones and IoT gadgets, to the core network and the ...



What is 5G Base Station?

A 5G base station, also known as a 5G NodeB (gNB) in the 3GPP (3rd Generation Partnership Project) standards, is a radio access point that ...

5G Base Station Chips: Driving Future Connectivity by 2025

As 5G networks become the backbone of modern communication, 5G base station chips are



emerging as a cornerstone of this transformation. With projections showing ...



What is a 5G Base Station?

A 5G base station is a critical component in a mobile network that connects devices, such as smartphones and IoT (Internet of Things) gadgets, to the core network and ...

base station in 5g

A 5G base station, also known as a gNodeB (gNB), is a critical component of a 5G network infrastructure. It plays a central role in enabling ...



What is a 5G base station?

A 5G Base Station, also Known as A GNB (Next-Generation Nodeb), is a fundamental component of the fifth-generation (5G) Wireless Network Infrastructure. It serves ...



Murata-Base-station-app-guide

From few large to many small cells Due to the higher-band frequency spectrum required by 5G, network infrastructure must make use of multiple small-cell antennas that can pick up these ...

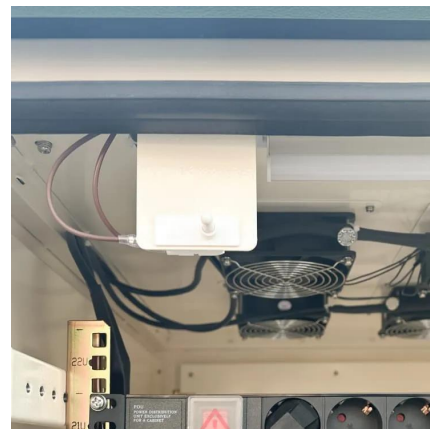


What is a 5G Base Station?

As the world continues its transition into the era of 5G, the demand for faster and more reliable wireless communication is skyrocketing. Central to ...

What is a 5G Base Station?

A 5G base station is a critical component in a mobile network that connects devices, such as smartphones and IoT (Internet of Things) gadgets, ...



Base Station Transmits: 5G

The goal of Base Station Transmits is to discuss challenges faced by engineers and technicians who must optimize today's wireless networks. Topics include antenna systems, ...



What Is A 5G Base Station?

The 5G base station is the core equipment of the 5G network, providing wireless coverage and realizing wireless signal transmission between the wired ...



Look Before You Leap: Secure Connection Bootstrapping for ...

The communication overheads and computational delays of these signature schemes and authentication protocols will be further aggravated in 5G networks since 5G base-stations use ...

Learn What a 5G Base Station Is and Why It's Important

A 5G base station is the heart of the fifth-generation mobile network, enabling far higher speeds and lower latency, as well as new levels of connectivity. Referred to as gNodeB, 5G base ...





What Is 5G Base Station?

5G base stations are the core equipment of 5G networks, providing wireless coverage and realizing wireless signal transmission between wired communication networks ...

The Role Of Communication Base Stations In 5g Networks

The communication base stations in 5G networks contribute to the overall network capacity. By employing beamforming and Massive MIMO (Multiple Input Multiple Output) techniques, these ...



What Is 5G Base Station?

5G base stations are the core equipment of 5G networks, providing wireless coverage and realizing wireless signal transmission between wired ...

Human exposure to EMF from 5G base stations: analysis, ...

The use of broadband field probes for 5G exposure assessment is still possible under certain considerations and correcting the results considering the base station load and ...



Review on 5G small cell base station antennas: Design

Finally, 5G communication currently operates on a Non-Standalone Architecture utilizing the core network of 4G with advanced access technologies and will eventually have its standalone core



What is 5G Base Station?

5G base stations are deployed in a variety of locations to provide wide - area coverage. They can be installed on rooftops, towers, streetlights, and other ...



[Accurately assessing EMF exposure from 5G](#)

This white paper provides information related to human exposure to radio frequency electromagnetic fields (RF EMF) from the base stations in the new 5G networks and describes ...





What is a 5G base station?

A 5G Base Station, also Known as A GNB (Next-Generation NodeB), is a fundamental component of the fifth-generation (5G) Wireless ...



What is 5G Base Station?

A 5G base station, also known as a 5G NodeB (gNB) in the 3GPP (3rd Generation Partnership Project) standards, is a radio access point that connects user equipment (such as 5G - ...

What Is A 5G Base Station?

The 5G base station is the core equipment of the 5G network, providing wireless coverage and realizing wireless signal transmission between the wired communication network and the ...



Technical Requirements and Market Prospects of 5G Base Station ...

With the rapid development of 5G communication technology, global telecom operators are actively advancing 5G network construction. As a core component supporting ...



5G Energy Efficiency Overview

Base station resources are generally unused 75 - 90% of the time, even in highly loaded networks. 5G can make better use of power-saving techniques in the base station part, ...



Which RF Technologies Are Shaping 5G Base Stations?

5G base stations are the backbone of the 5G network, transmitting and receiving radio signals across various frequency bands to provide connectivity to mobile devices.

Comparison of Power Consumption Models for 5G Cellular Network Base

The increasing total energy consumption of information and communication technology (ICT) poses the challenge of developing sustainable solutions in the area of ...





Learn What a 5G Base Station Is and Why It's Important

In essence, a 5G base station is a very sophisticated cell tower that connects your device-terms like phones and IoT devices-to the much larger 5G network. Unlike their 4G counterparts, 5G ...

base station in 5g

A 5G base station, also known as a gNodeB (gNB), is a critical component of a 5G network infrastructure. It plays a central role in enabling wireless communication between user ...



Contact Us

For catalog requests, pricing, or partnerships, please visit:
<https://www.talbert.co.za>