

Can the inverter be connected to a 220v battery





Overview

Yes, you can hook a power inverter directly to a battery. Ensure the inverter's power rating is compatible with the battery's capacity. This connection supplies reliable power to your vehicle. Always prioritize safety and check the current draw to prevent any damage to the starting battery. Do inverters need to be connected to batteries?

Connecting inverters to batteries is an important part of an off-grid power solution or backup power system, and the right connections ensure that the system runs efficiently.

Do inverters and batteries need to match?

The inverter and batteries must match in terms of voltage, capacity, and power output. If you are using a 12V battery, then the input voltage of the inverter must match the battery voltage. If the specifications of the battery and the inverter do not match, the system will not operate stably and may even damage the equipment.

How to connect inverter to battery?

A key safety measure in how to connect inverter to battery is the installation of fuses or circuit breakers to protect against overload or short circuits. Properly tightening the terminal connections to ensure a stable electrical flow without over-tightening. Recommend using a multimeter to check the voltage and verify that connections are secure.

What are inverter battery connections?

Inverter battery connections form the backbone of reliable power systems, ensuring efficient operation and safety. By following best practices and understanding the nuances of these connections, you can enhance system performance and longevity.

What type of battery does an inverter use?



Inverters typically use lead-acid batteries, known for their reliability and cost-effectiveness. UPS systems might use similar batteries, but some opt for lithium-ion variants due to their compact size and longer life. Knowing your battery type helps in choosing the right connection method and maintaining overall system health.

Can a 12V battery be used as an inverter?

If you are using a 12V battery, then the input voltage of the inverter must match the battery voltage. If the specifications of the battery and the inverter do not match, the system will not operate stably and may even damage the equipment. In addition, choose the right inverter power and battery capacity for your home or commercial needs.



Can the inverter be connected to a 220v battery

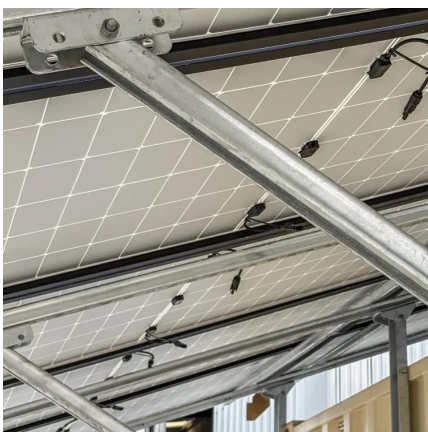


How to Connect an Inverter to a Battery: Step-by-Step ...

Properly connecting your inverter to a battery is essential for a reliable and efficient power backup system. By following the steps outlined in this guide, ...

Wiring Power Inverters In Cars: A Step-By-Step Guide

Power inverters are handy gadgets that convert 12V DC input into 110V or 220V AC output. They are useful in cars because they allow you to use electronic devices that require ...



Can I Connect an Inverter Directly to a Battery? - ...

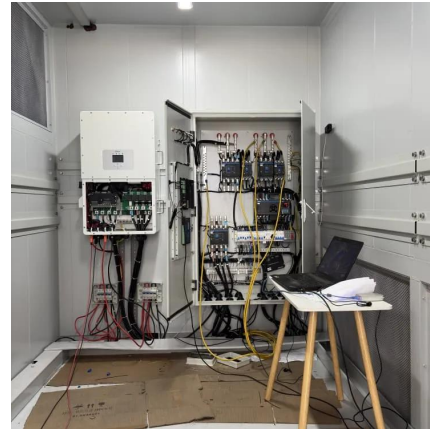
In this guide, we will walk you through the process of connecting an inverter to a battery, ensuring a seamless and effective power supply ...

Connecting Your Battery and Inverter for Optimal Performance

Learn how to properly connect a battery to an inverter and ensure a reliable power source for



your devices and appliances.



Can I connect an inverter to my 12v battery while my car is

Is it a hazard? Do I have to disconnect the 12v completely or could I just clamp the inverter on directly with the car off? If I connect it to the 12v and have the car running will it damage my ...

How to Use Solar Inverter Without Battery: A Step-by-Step Guide ...

To effectively use a solar inverter without a battery, ensure you select the right inverter, follow a proper installation process that connects solar panels to the inverter and grid, ...



How to convert 220v battery into solar panel , NenPower

An appropriately sized inverter leads to improved system efficiency, reduced losses, and an extended lifespan for both the inverter and the connected 220V battery.



How to connect inverter to battery: a step-by-step guide for safe ...

We'll explore how to connect inverter to battery, its purpose, and the tools needed for a proper and safe connection. Connecting an inverter to a battery is a crucial step in setting ...



How to Build a 12V Inverter Circuit Diagram: A Step ...

Learn how to build a 12v inverter circuit with a detailed diagram and step-by-step instructions. This article provides all the necessary information to create a ...

A Circuit Diagram for Converting 12v to 220v: Inverter ...

An inverter circuit diagram is essential for understanding how an inverter converts direct current (DC) to alternating current (AC) with the help of electronic ...



How to Run 220v 1.5 Ton AC on Single 12v 150Ah Battery

In this video, I will teach you how to run a 220 volts 1.5 ton AC (Air Conditioner) on a single 12v 150Ah battery using a 1500 watts pure sine wave inverter



Inverter has a Spark with Battery Connection

When you connect an inverter to a battery the capacitors inside the inverter charge very quickly and this causes a spark at the battery terminal. To prevent this spark from connecting batteries to



Can I Attach My Small Inverter Directly to the Battery?

Yes, you can attach a small inverter directly to a battery, but doing it safely requires understanding voltage compatibility, wire sizing, and overload risks. Many DIYers assume it's ...

Running Inverters in Parallel: A Comprehensive Guide

How to Connect 2 Inverters Together: Connect 2 inverters by ensuring they match in voltage and amperage. Link them to a battery with the same voltage, connecting positive ...



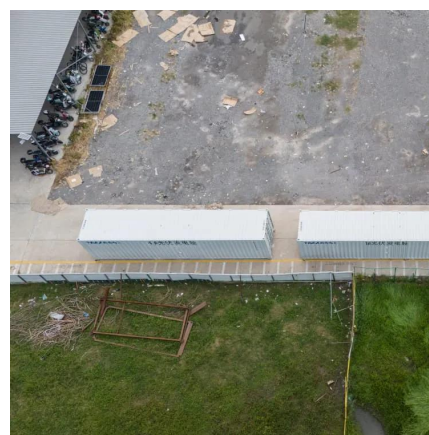


How to Safely Connect a Battery to an Inverter: A ...

Learn how to safely connect your batteries to your inverter with our guide. Avoid common wiring mistakes to optimize performance and extend ...

Camping Inverters , Which one? , Battery life and available power

Find out which inverter you need. Camping inverters run 230V mains appliances from a leisure battery or other 12V source. Read the article to find out what size inverter you need, what ...

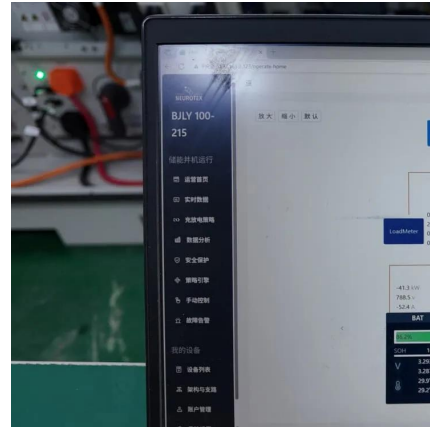


How to Safely Connect a Battery to an Inverter: A Step-by-Step ...

Learn how to safely connect your batteries to your inverter with our guide. Avoid common wiring mistakes to optimize performance and extend system life.

Power Inverter: Can I Hook It Directly to the Battery for Safe

Yes, you can hook a power inverter directly to a battery. Ensure the inverter's power rating is compatible with the battery's capacity. This connection supplies reliable power to your ...



Can I Connect an Inverter Directly to a Battery? - ECGSOLAX

In this guide, we will walk you through the process of connecting an inverter to a battery, ensuring a seamless and effective power supply system. Before diving into the ...



How to connect inverter to battery: a step-by-step ...

We'll explore how to connect inverter to battery, its purpose, and the tools needed for a proper and safe connection. Connecting an inverter to a ...



Can I Plug a Generator into a 220V Outlet: step by step guide

Find out if you can plug a generator into a 220V outlet safely, including important precautions and alternative methods.





Inverter Battery Connection: Essential Tips For Safe And Efficient

Learn essential tips for safe and efficient inverter battery connection. Discover step-by-step guides, wiring techniques, and troubleshooting tips to optimize your power backup system's ...



How to Use Off Grid Solar Inverter Without Battery

By avoiding the use of batteries, which can pose environmental challenges during disposal, off grid solar inverter without battery would ...

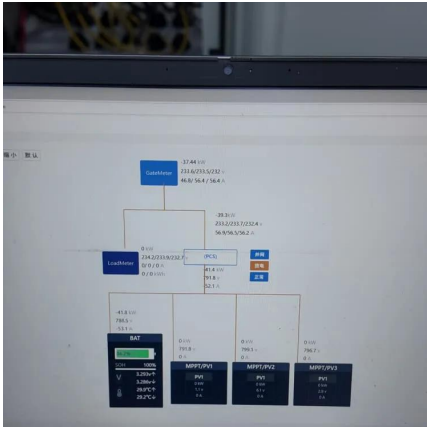
How to Connect an Inverter to a Battery: Step-by-Step Guide for ...

Properly connecting your inverter to a battery is essential for a reliable and efficient power backup system. By following the steps outlined in this guide, you can ensure a safe and seamless setup.



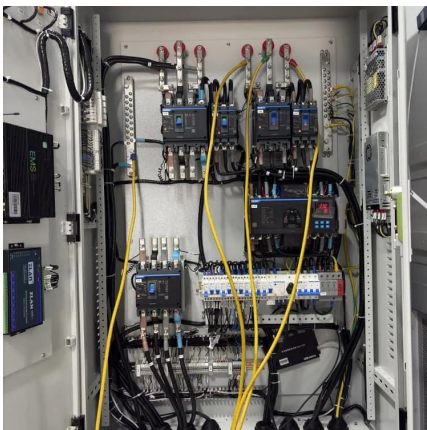
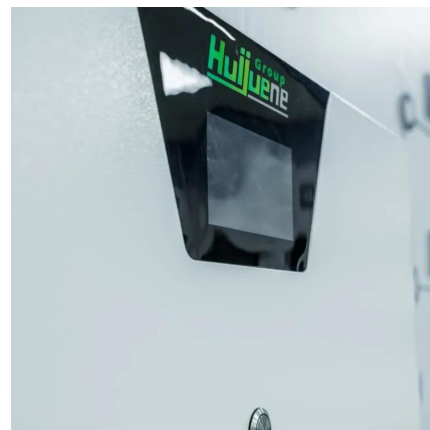
[Can I connect an inverter directly to a battery?](#)

Yes, you can connect an inverter directly to a battery bank. Once the batteries are connected correctly, simply route the positive and negative wires from the inverter to the ...



How to connect a 24 Volt 220v Inverter to a battery?

As a supplier of 24 Volt 220v Inverters, I often receive inquiries from customers about how to connect these inverters to a battery. In this blog post, I'll provide a comprehensive guide on ...



Can I connect a 12V inverter to work with a bank of Two 12V ...

It charges fine. Instead of a 24V inverter on the ends, Can I connect a 12V inverter to work by attaching the 12V inverter to the+ and - to of ONLY ONE of the 12V Batteries in the ...

Contact Us

For catalog requests, pricing, or partnerships, please visit:
<https://www.talbert.co.za>