

Can solar power be used directly with a water pump inverter





Overview

What is a solar pump inverter?

Solar pump inverters are a critical component in harnessing solar power for water pumping. They ensure that the DC power generated by solar panels is effectively converted to AC power, allowing for the efficient operation of water pumps.

Can a solar pump inverter run a water pump?

In today's world, where renewable energy sources are becoming increasingly important, solar power stands out as a viable solution for various applications, including water pumping. Solar pump inverters are a key component in this setup, converting solar energy into usable electricity to run water pumps efficiently.

Does a solar water pump work if there is no electricity?

Solar panels make DC power, which doesn't work with things that run on AC power. The inverter changes the DC to AC, so the solar energy can run the pump. This is very important for solar water systems to work good even when there's no electricity from the electric company.

How to choose a solar pump inverter?

Understand the rated power of the water pump. Normally, the rated power of the solar pump inverter should be slightly more than or equal to the rated power of the water pump to ensure that the pump can be operated normally. For instance, if the water pump's rated power is 2kW, the selected inverter should have a rated power of 2kW or higher.

Can you connect a water pump to a solar panel?

While it might seem straightforward to connect a water pump directly to a solar panel, it's generally not advisable. Most water pumps require AC power, which means a solar panel's DC output needs to be converted by an inverter.



Additionally, solar panels alone cannot provide the necessary starting surge current that pumps require.

How do you Power a water pump with a power inverter?

Integrate a power inverter into your setup. The inverter transforms the solar energy (DC) into electricity that can be used to power your water pump, which usually operates on alternating current (AC). After connecting the power inverter to the solar panel, consider attaching a storage battery.



Can solar power be used directly with a water pump inverter



How Solar Pump Inverters Can Efficiently Run Water ...

Yes, but several factors determine if a solar pump inverter can effectively power a water pump. The pump's type, voltage requirements, and power rating must ...

What Kind Of Solar Inverters Can Drive a Water Pump?

Multiple types of inverter can drive a water pump. Let's explore them. Three solar inverters can drive a water pump and convert photovoltaic direct current into alternating ...



What is a Solar Pump Inverter?

In this context, solar pump inverters offer a compelling solution--converting solar energy directly into usable power for motors while ...

Can I Connect a Solar Panel Directly to a Water Pump?

Yes, a water pump can run on solar power, provided that the system is correctly sized and



configured. A solar water pump uses energy generated from ...



5+ Ways of Connecting Solar Panel to a Water Pump ...

In today's world, connecting solar panel to a water pump has become a top priority for many people. In the recent past solar panels are ...



DC Pump is Better than AC Pump in Solar Pumping ...

DC pumps usually use DC motors, which can directly convert electrical energy into mechanical energy to drive the water pump. The AC ...



Integrating Water Pump Systems with Solar Inverters

By harnessing solar energy, these systems can power water pumps, reducing reliance on fossil fuels and minimizing operating costs. This article will delve into the benefits, considerations, ...





Solar Pump Inverter Guide: How PV Inverters Power Water Pumps

A solar pumping inverter connects directly to solar panels. It takes the variable DC electricity generated by the panels and converts it into AC electricity, which powers standard water pump ...



How Solar Pump Inverters Can Efficiently Run Water ...

Yes, you can run a water pump on a solar inverter, but it's important to consider several factors to ensure smooth operation. The type of ...

What Kind of Solar Inverter Can Drive a Water Pump?

2. Solar On-Grid Inverter A solar on-grid inverter, also known as a grid-tied inverter, feeds the electricity generated from solar panels directly into ...



[How to Use Solar Energy to Power Your Heat Pump](#)

Using solar energy to power your heat pumps can make them even more sustainable. If you want to use solar energy to power your heat pump, ...



THE ULTIMATE GUIDE TO SOLAR WATER PUMPS

WHICH FARMS ARE SUITABLE FOR SOLAR WATER PUMPS? Solar water pumps are suitable for many different types and sizes of farms. From small garden plots and allotments to larger, ...



Power Up Your Well: Can Submersible Pump Run on Solar Power...

Harness a submersible pump run on solar power for reliable, eco-friendly deep well water access in agriculture, using clean, free energy for irrigation.

What Is a Solar Pump Inverter and Why Do You Need One for Your Solar

Solar water pumps are a great way to access water in areas where traditional electricity might not be available. They're especially useful for irrigation or remote water needs. But to make solar ...



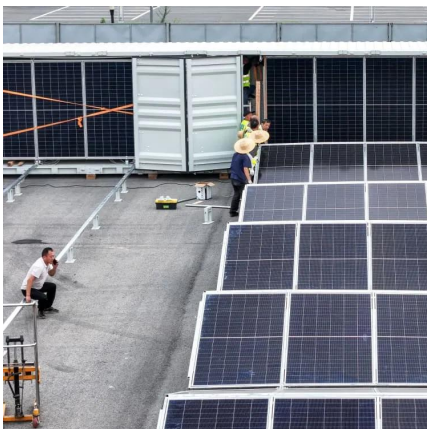
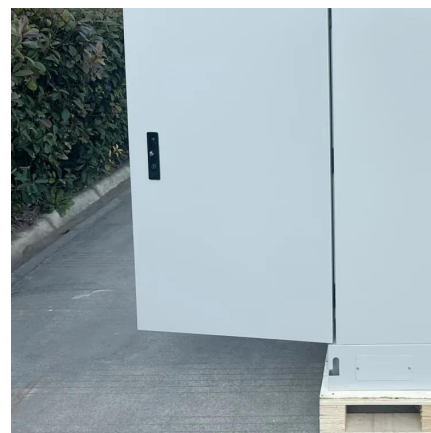


What is a Solar Water Pump? , How does a Solar ...

The solar panel is used to capture energy from the sun. The pump controller regulates the power flow from the panel to the pump. When the pump gets ...

What Is a Solar Pump Inverter and Why Do You Need ...

Solar water pumps are a great way to access water in areas where traditional electricity might not be available. They're especially useful for irrigation or ...



Solar Water Pump Inverter

Solar Water Pump Inverter VEICHI SI series solar water pump inverter is a high-efficiency solar water pump controller which can make full use of solar energy to drive water pumps for ...

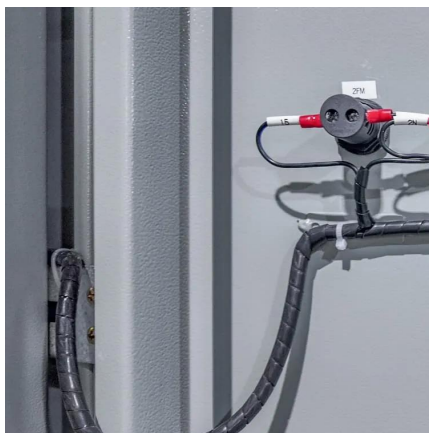
How Solar Pump Inverters Can Efficiently Run Water Pumps Using Solar

Yes, you can run a water pump on a solar inverter, but it's important to consider several factors to ensure smooth operation. The type of pump, the capacity of the inverter, and ...



How Solar Water Pumping Systems Work

Solar water pumping systems have revolutionized access to clean and reliable water for various needs, including irrigation, livestock care, and household use. These systems utilize ...



A Typical Design of Solar Water Pump System

The solar water pump system, or PV pumping system, is mainly comprised of solar panels, a solar pump inverter, a water pump, a pipeline, ...



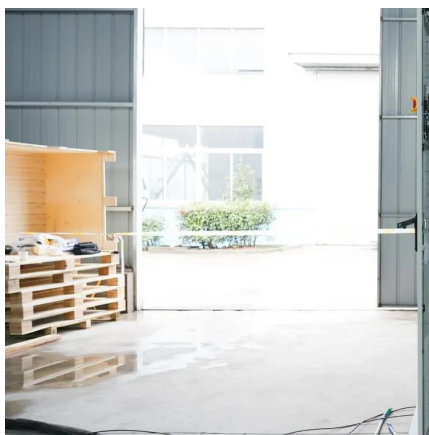
How to Convert a Traditional Electric Pump into a Solar-Powered Pump

How Do Solar Pump Inverters Work? A solar pump inverter converts the DC electricity generated by solar panels into the AC power needed by your pump. This conversion ...



How Solar Water Pumping Systems Work

Solar water pumping systems have revolutionized access to clean and reliable water for various needs, including irrigation, livestock care, and household ...



Can a 380V water pump inverter be used in a solar power system?

In conclusion, a 380V water pump inverter can be used in a solar power system, but careful consideration must be given to the electrical requirements, power output, control, and ...

Essential Guide to Solar Inverters for Water Pump Systems

Conclusion: Solar inverters are the cornerstone of solar-powered water pump systems, unlocking the potential of renewable energy for sustainable water access. By understanding the key ...



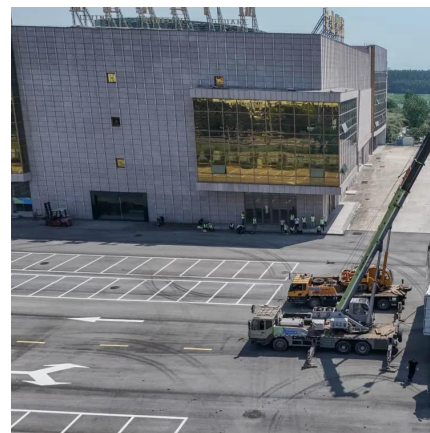
How Solar Pump Inverters Can Efficiently Run Water Pumps Using Solar Power

Yes, but several factors determine if a solar pump inverter can effectively power a water pump. The pump's type, voltage requirements, and power rating must match the frequency inverter's ...



Can You Run a Well Pump on Solar: 6 Factors to Consider

Among these, DC submersible pumps are often preferred for off-grid power use due to their higher efficiency and the ability to work directly with solar panels without the need for ...



[How To Connect A Solar Panel To A Water Pump ...](#)

The erratic pulse of electricity produced by the solar panel will burn out the pump at some point. That process can take a few seconds to a ...

[How to Connect Solar Panel to Water Pump](#)

While it's technically possible for you to connect a solar panel directly to an AC or DC water pump, it's not advisable to do so. Solar panels' irregular output can damage the ...





Can I Connect a Solar Panel Directly to a Water Pump?

Yes, a water pump can run on solar power, provided that the system is correctly sized and configured. A solar water pump uses energy generated from photovoltaic (PV) solar panels to ...

Contact Us

For catalog requests, pricing, or partnerships, please visit:
<https://www.talbert.co.za>