

# **Can photovoltaic panels be connected directly to batteries**





## Overview

---

Can a solar panel connect to a battery?

As a rule of thumb, you can connect your solar panels directly to a battery if the output voltage ( $V_{mp}$ ) doesn't exceed 35% of the rated battery voltage. That's 16V max. for a 12V battery. If the solar panel  $V_{mp}$  is too high (overvoltage), this will permanently damage your battery. Finally, this configuration should only be for emergency charging.

How do you connect solar panels to a battery?

The best way to connect solar panels to a battery is through a solar charge controller, also called a solar battery charger. Optimize solar energy harvesting. Properly charge the battery. We've seen that solar panels are variable generators.

Can a lithium battery be connected to a solar panel?

Fortunately, lithium batteries have a built-in battery management system (BMS) that protects the battery pack from overcharging and overvoltage. Therefore, the risk of damaging a lithium battery is low. Nevertheless, it's still not advisable to directly connect a lithium battery to a solar panel.

Can You charge a battery directly from a solar panel?

Solar Charge Controller is the best safety mechanism for that task. Yes, you can charge a battery directly from a Solar Panel. But it has strong requirements and management. If you are feeling adventurous and not serious about this go ahead and try to charge a battery by connecting it directly to the panel.

What happens if a solar panel doesn't charge a battery?

When excess power passes from a solar panel to a battery, the excess power turns into heat that will quickly break down the battery. If there is no charge controller, the solar panel's voltage will simply go to the battery.



Can you use a solar panel without a charge controller?

Using a panel and battery without a charge controller is perilous if you're relying on solar power for your electricity. If you're using a smaller portable solar charger, the panels are used as stand-alone devices and can charge small batteries so you may take the power with you. When energy is sent to the battery, it becomes heat.



## Can photovoltaic panels be connected directly to batteries

---



### Can I Connect Solar Panel Directly To Battery? Actual Tests

Solar panels rated higher than 5 watts must not be connected directly to a battery, but only through a solar charge controller to protect against over-charging.

### How to Hook Up Solar Panels to RV Batteries , Renogy US

To have an effective solar panel system, with multiple panels, they all need to be all the same wattage. What is the capacity and type of my RV battery bank? Unless you plan to replace ...



### Can I Connect Solar Panel Directly To Battery? [Should I Do It?]

Connecting your solar panels directly to a battery is possible but not advisable. In an emergency, this will only work for smaller systems (12V ...

### Can I Connect a Solar Panel Directly to a Battery?

Wondering if you can connect a solar panel directly to a battery? Learn why it's essential to





use a charge controller for safe and efficient energy storage in this detailed guide.



## Can Solar Panels Be Connected Directly To A Battery? How To ...

Yes, you can connect a small solar panel directly to a battery for trickle charging. This setup helps reduce self-discharge. Make sure the panel's open-circuit voltage is higher ...

## Can You Power Something Directly from a Solar Panel?

By Porimol Sorkar Yes, you can power something directly from a solar panel, provided that the device is compatible with the direct current ...



## Can you Connect a Solar Panel Directly to a Battery?

Many people ask me if it is possible to connect a solar panel directly to a battery. The answer is no. Now you might be asking, why not? Let me explain. Why we should NOT ...



## Can Solar Panels Be Directly Connected To A Battery Bank?

You can connect a solar panel directly to a battery, but this risks overcharging. Overcharging can cause excess heat, which reduces the battery's lifespan and creates safety ...



## Can I Connect Solar Panel Directly To Battery? [Should I Do It?]

Connecting a solar panel directly to a battery will almost certainly result in too much voltage being passed from the panel to the battery. When excess power passes from a solar ...

## Can I Connect Solar Panel Directly to Battery?

Yes, you can connect a solar panel directly to a battery. However, to prevent the battery from overcharging or damage, it is advisable to use a ...



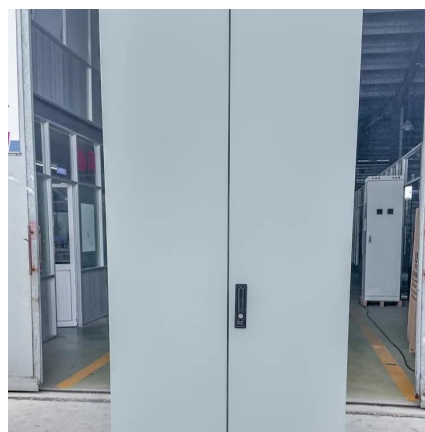
## How to connect solar panels to inverter and battery in 3 steps

This guide explains how to connect solar panels to an inverter safely and effectively. We'll also discuss factors like inverter capacity to help you determine how many ...



## Can you connect solar panels directly to a battery?

Connecting your solar panels directly to a battery is possible but not advisable. In an emergency, this will only work for smaller systems (12V battery and solar panel below ...

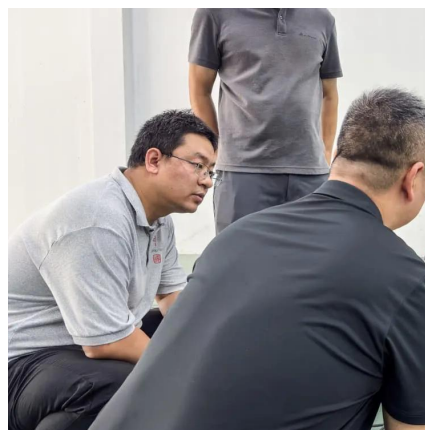


## Can I Connect Solar Panel Directly to Battery? Exploring Green ...

Yes, you can connect a solar panel directly to a battery. However, to prevent the battery from overcharging or damage, it is advisable to use a charge controller in between the ...

## How to Hook Up a Solar Panel to a Battery: A Step-by-Step Guide

Connecting solar panels to a battery system is essential for storing energy generated from the sun. This setup allows you to use solar power when the sun isn't shining, ...



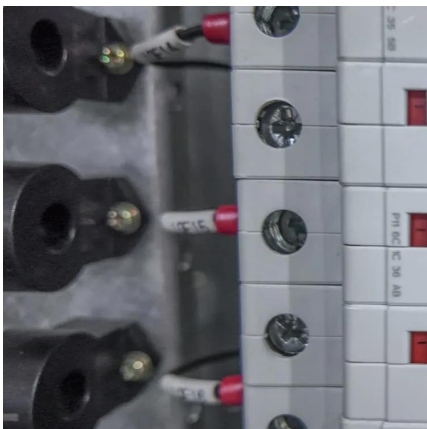
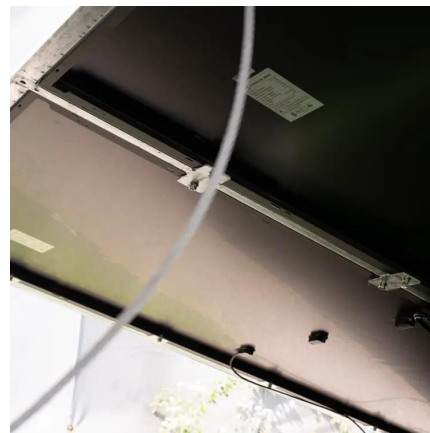


## Can I Connect Solar Panel Directly To Battery? Actual Tests

A solar panel can be connected directly to a 12 volt car battery, but must be monitored if it's more than 5 watts. Solar panels rated higher than 5 watts must not be ...

### [How to Connect Solar Panel to Car Battery](#)

Connecting a solar panel to a car battery is a practical and efficient way to maintain your car's battery charge, especially for off-grid situations. Whether you're using a ...



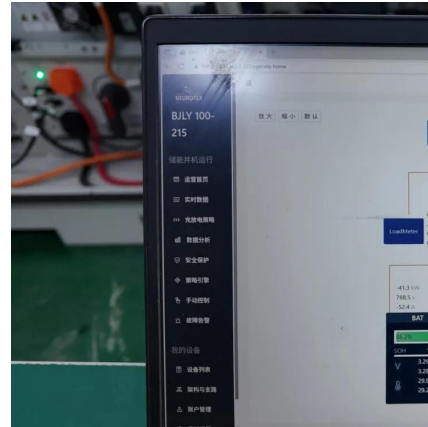
### [Can I hook up a solar panel directly to a battery](#)

A: Yes, you can connect a solar panel directly to a battery, but it is important to match the voltage of the solar panel to the battery voltage. Additionally, using a charge ...

## Can photovoltaic panels be directly connected to batteries

Can I Connect a Solar Panel Directly to a Battery for Efficient Looking to harness solar energy? This article explores whether you can connect a solar panel directly to a battery, covering ...





## Can A Solar Panel Charge A Battery Directly? Benefits, Risks, ...

Yes, a solar panel can charge a battery directly. However, without proper control, voltage variations may damage the battery. To prevent this, use a charge controller. This ...



## Can Solar Panel be Connected Directly to Battery?

But if you are serious and want a good and efficient way, a Solar Charge controller is a must for charging batteries with your trusty solar panel. To wrap it up: Yes, Solar panels can be directly ...



## Can You Connect a Solar Panel Straight to a Battery? DIY Tips ...

Yes, you can connect a solar panel directly to a battery. However, this risks overcharging, which generates heat and can harm the battery, reducing its lifespan. To ensure ...





## Can You Run Solar Panels without Inverter?

So, can you run solar panels without an inverter? The answer is yes, but if you are asked do solar panels directly power your house, then you ...



## **What Happens if a Solar Panel is Not Connected to Anything?**

There is voltage in the panels but current requires cables to flow and deliver power to electronics, appliances, motors etc. DC powered devices can be connected directly to a solar panel and ...

## **How to Connect Solar Panels to Batteries: A Step by ...**

FAQs Can I connect a solar panel directly to a battery? No, direct connections can lead to overcharging and potential damage. A charge ...



## **Can a Solar Panel Be Connected Directly to a Battery: Key ...**

Connecting a solar panel directly to a battery is feasible, but it requires careful consideration of various factors. Understanding the benefits and potential risks can help you ...



### Can I hook up a solar panel directly to a battery

A: Yes, you can connect a solar panel directly to a battery, but it is important to match the voltage of the solar panel to the battery voltage.  
...



## Contact Us

---

For catalog requests, pricing, or partnerships, please visit:  
<https://www.talbert.co.za>