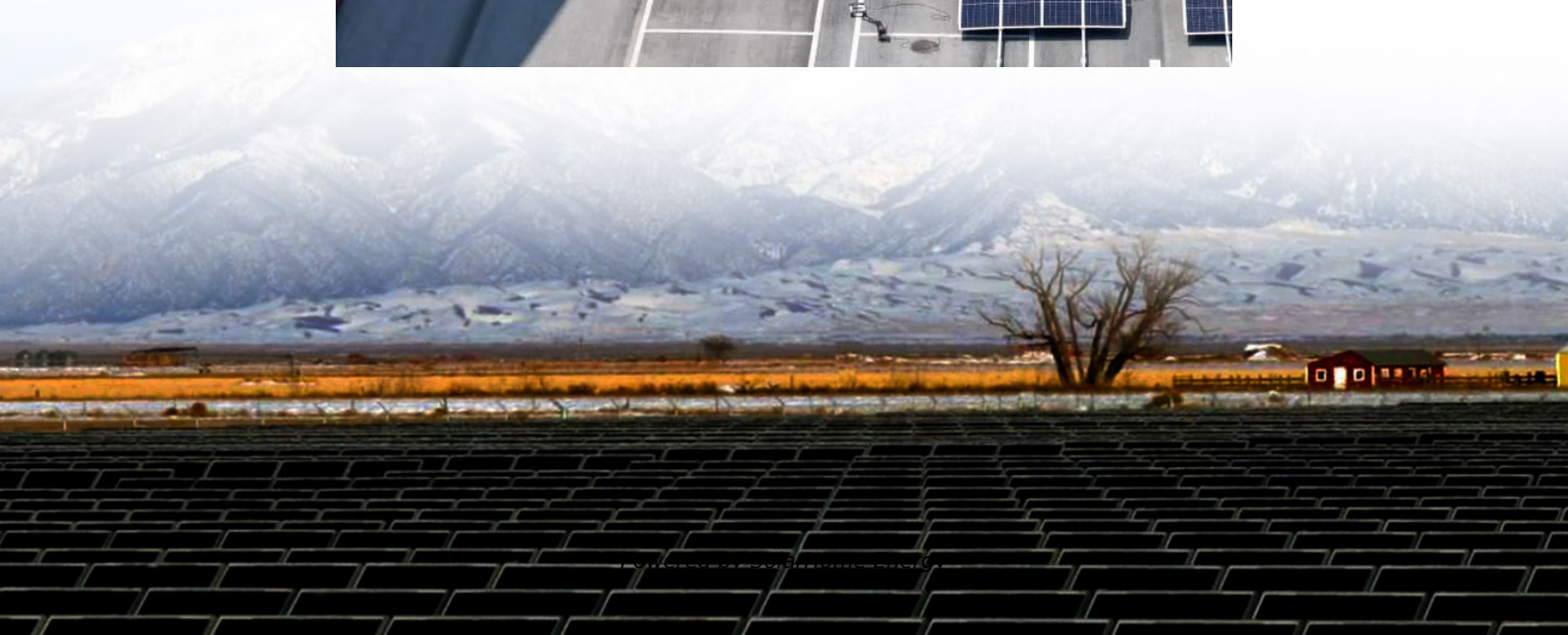


# **Can outdoor lithium battery packs be connected in parallel**





## Overview

---

Yes, you can connect two lithium batteries in parallel to increase capacity while maintaining voltage. Ensure both batteries have identical voltage, capacity, and state of charge to prevent imbalances. Can you connect lithium batteries in parallel?

There are ways to connect lithium batteries in parallel to double capacity while keeping the voltage the same. This means two 12V 120Ah batteries wired in parallel will give you only 12V. But increases capacity to 240Ah. Connecting your lithium batteries in parallel requires some preparation to ensure you don't do any expensive damage.

How many lithium batteries can enerdrive run in parallel?

Most lithium batteries on the market will have an inbuilt battery management system which will prevent over discharge. Enerdrive supports running its B-TEC batteries lithium batteries in parallel. It recommends a maximum battery bank size of four lithium batteries of equal voltage and amperage.

Should lithium ion batteries be wired in series or parallel?

When wiring lithium-ion batteries in series, the voltage is changed which can damage equipment if not performed with caution and great understanding. In contrast, wiring lithium batteries in parallel keeps the voltage the same while simply giving the batteries the ability to supply that same voltage level for longer.

Why do I need to add batteries in parallel?

If your load requires more current than a single battery can provide, but the voltage of the battery is what the load needs, then you need to add batteries in parallel to increase amperage. Wiring batteries in parallel is an extremely easy way to double, triple, or otherwise increase the capacity of a lithium battery.

How do you maintain a parallel lithium battery?



To maintain parallel lithium batteries effectively: Regularly Check Voltage Levels: Ensure all batteries are at similar voltage levels before connecting. Balance Charging: Use a charger that balances charge among all connected batteries. Inspect Connections: Regularly check connections for corrosion or damage to prevent failures.

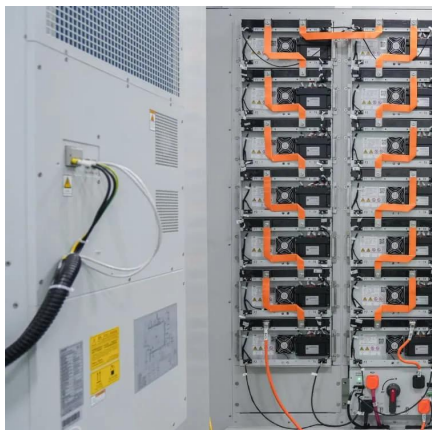
How do I connect batteries in parallel?

Follow these steps to safely connect batteries in parallel: Prepare the Batteries: Ensure all batteries are of the same voltage and capacity. Fully charge all batteries to the same state. Connect the Positive Terminals: Use a high-quality cable to connect the positive terminal of the first battery to the positive terminal of the next battery.



## Can outdoor lithium battery packs be connected in parallel

---

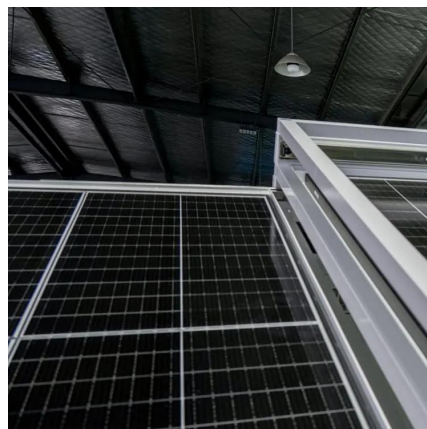


### Wiring Batteries in Parallel: Understanding the Dangers and ...

While wiring batteries in parallel can be an effective way to increase capacity, it introduces several potential risks that can compromise safety, performance, and battery ...

### How to Connect Multiple 48V Lithium Batteries in Parallel

Connecting multiple 48V lithium batteries in parallel can significantly enhance your energy storage capacity while maintaining the same voltage. Here's a comprehensive step-by ...



### Connecting Batteries with DIFFERENT Capacity in Parallel

#shtf #diy #diysolar #lifepo4 #lifepo4battery If you find my content helpful and you'd like to help support the channel in some small way, you can buy me a c



### How to Put 2 Battery Packs Together?

In this comprehensive guide, I'll explain step-by-step how to properly connect two battery packs in series or parallel to create a safe, higher-





performance battery bank for your ...



## How To Wire Lithium Batteries In Parallel Increase Amperage

Wiring batteries in parallel is an extremely easy way to double, triple, or otherwise increase the capacity of a lithium battery. When wiring lithium batteries in parallel, the capacity ...

## [How To Make A Parallel Battery Connection Safely?](#)

Check here. Parallel connections keep voltage constant but sum amp-hour capacities. For example, two 12V 100Ah lithium batteries in parallel provide 12V 200Ah. ...



## How to Connect Two 12V Lithium Batteries in Parallel ...

Explore our comprehensive guide on how to connect two 12V lithium batteries in parallel. Get step-by-step instructions, safety tips, and learn how Wild Yak ...





## Can You Link Battery Packs? Understanding Series Vs. Parallel

Yes, you can link battery packs together. However, it is important to consider how you connect them to avoid potential issues. Connecting battery packs in series increases the ...



## How to Wire 12V Batteries in Series & Parallel (w/ ...

Learn how to wire batteries in series, parallel, and series-parallel with our step-by-step tutorial. Increase your battery voltage and amp hour ...

## Connecting Lithium Batteries in Parallel: What You Need to Know

Planning to connect lithium batteries in parallel? Read our essential guide to learn the right way to set up your battery bank for more power.



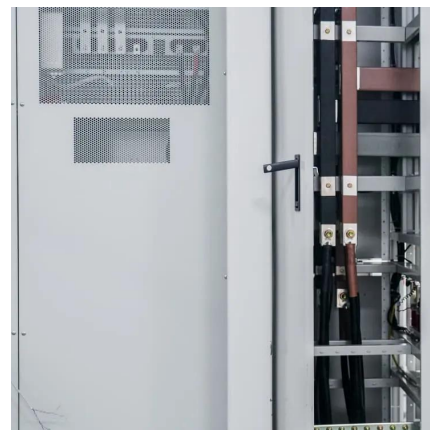
## [How to Connect Lithium Batteries in Parallel?](#)

Connecting lithium batteries in parallel allows you to increase capacity without changing the voltage, allowing your device to run longer without frequent charging. So how do ...



### [How to connect lithium batteries in parallel!](#)

How to connect lithium batteries in parallel!  
Amped Outdoors 1.54K subscribers Subscribed



### **Can You Safely Connect Two Lithium Batteries in Parallel?**

Yes, you can connect two lithium batteries in parallel to increase capacity while maintaining voltage. Ensure both batteries have identical voltage, capacity, and state of charge to prevent ...

### **How to Connect Two 12V Lithium Batteries in Parallel , Wild Yak Battery**

Explore our comprehensive guide on how to connect two 12V lithium batteries in parallel. Get step-by-step instructions, safety tips, and learn how Wild Yak Battery's 12V 100Ah and 12V ...





## How To Wire Lithium Batteries In Parallel Increase ...

Wiring batteries in parallel is an extremely easy way to double, triple, or otherwise increase the capacity of a lithium battery. When wiring ...

## Wiring Batteries in Parallel: Understanding the ...

While wiring batteries in parallel can be an effective way to increase capacity, it introduces several potential risks that can compromise safety, ...



## Battery Parallel Wiring

Did you know that connecting batteries in parallel incorrectly can permanently damage your system? Battery parallel wiring is a powerful technique to increase capacity while ...

## Safety Tips for Connecting Batteries in Series and Parallel

A Battery Management System (BMS) plays a pivotal role in ensuring the safety and efficiency of lithium battery packs, especially in series and parallel configurations.





## What Should Be Noted When Connecting Two Battery Packs In Parallel

This video focuses on the key precautions for connecting two lithium battery packs in parallel, especially how to ensure consistent charging and discharging currents.



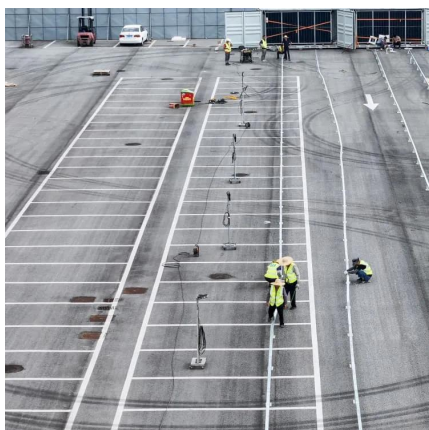
## Parallel Battery Packs

We've been looking at truck battery packs and a common thread is the parallel battery packs approach. As there is no need for a propshaft the ...



## batteries

My question described a scenario where three sets of 'four 18650s connected in parallel' are connected in series. I know that a BMS can manage the connection within the three packs ...





## Management of imbalances in parallel-connected lithium-ion battery packs

Uneven electrical current distribution in a parallel-connected lithium-ion battery pack can result in different degradation rates and overcurrent issues in the cells. Understanding the ...



## [Can You Use Two Lithium Batteries in Parallel?](#)

Yes, you can connect two lithium batteries in parallel to increase the overall capacity and current output of your battery system. However, it is crucial to ensure that the ...

## Connecting Lithium Batteries in Parallel: What You ...

Planning to connect lithium batteries in parallel? Read our ...



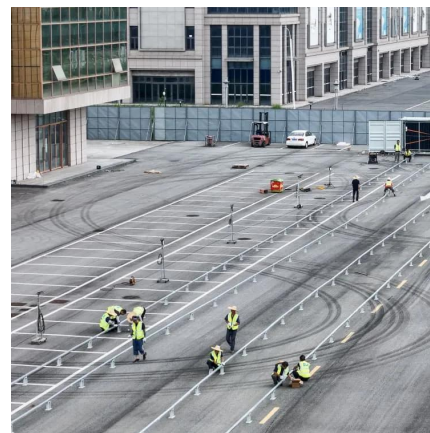
## [Connecting Lithium Batteries in Parallel](#)

By following the step-by-step guide provided in this article and considering the necessary precautions, you can successfully connect lithium batteries in ...



## Series vs Parallel Battery Wiring: Key Differences, ...

When using multiple batteries in a project, you have two primary wiring configurations--series and parallel. Each has distinct advantages ...



## Understanding the Performance of Lithium Batteries in ...

While parallel connections focus on increasing capacity and runtime, series connections are designed to increase voltage for high-power ...

## [Connecting Lithium Batteries in Parallel](#)

By following the step-by-step guide provided in this article and considering the necessary precautions, you can successfully connect lithium batteries in parallel while ensuring safety ...





## **What Should Be Noted When Connecting Two Battery Packs In ...**

This video focuses on the key precautions for connecting two lithium battery packs in parallel, especially how to ensure consistent charging and discharging currents.

## **Contact Us**

---

For catalog requests, pricing, or partnerships, please visit:  
<https://www.talbert.co.za>