

Can ordinary inverters use lithium batteries





Overview

Yes, you can connect an inverter to a lithium battery. Lithium batteries, particularly Lithium Iron Phosphate (LiFePO₄) batteries, are well-suited for use with inverters due to their high efficiency, lightweight design, and ability to deliver consistent power. Should you use a lithium battery inverter?

Lithium batteries are more efficient than lead-acid, so you might opt for a slightly less powerful inverter to optimize efficiency. Low Battery Cutoff (LBC): These settings protect the battery from over-discharge and over-charging. Ensure the inverter's LBC is compatible with the recommended voltage limits of your lithium battery.

Which battery should I use for my inverter?

When it comes to powering your inverter, there are a few alternative options to consider aside from lithium batteries. While lithium batteries have gained popularity due to their numerous advantages, they may not be the right choice for everyone. One alternative option is lead-acid batteries.

What is a lithium battery for inverter?

Lithium offers unmatched performance, a longer lifespan, and better efficiency than traditional batteries. Whether you're setting up a home backup system, solar power solution, or mobile energy unit, this guide will walk you through everything you need to know about lithium batteries for inverters. Part 1.

How to know if a lithium battery is compatible with an inverter?

As most of the inverters do not have any communication for the battery communication so these Inverters can't do anything about the communication port of the Lithium battery. Here's how to find out for sure: Check the battery manual or manufacturer website: They'll recommend compatible inverter models and specifications.

How do I install a lithium battery for inverter?



Understanding your inverter type is crucial to avoid potential issues down the line. The first step in installing a lithium battery for inverter with an existing inverter is to assess your current setup. This includes evaluating the condition of your inverter and ensuring it meets the necessary specifications for lithium-ion batteries.

Can a lithium battery be used with a sine wave inverter?

Some examples include pure sine wave and modified sine wave inverters. These inverters may work better with lithium-ion batteries. Understanding your inverter type is crucial to avoid potential issues down the line. The first step in installing a lithium battery for inverter with an existing inverter is to assess your current setup.



Can ordinary inverters use lithium batteries

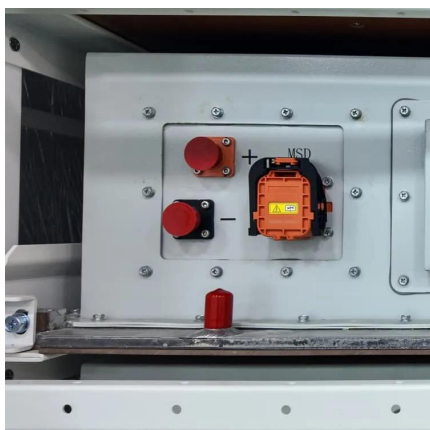


Do Lithium Batteries Need a Special Inverter?

Lithium batteries, including lithium-ion batteries and lithium iron phosphate (LiFePO4) batteries, don't necessarily require a special inverter specifically ...

Best RV Converter Replacements For Lithium RV ...

Looking at a new 12 volt lithium battery for your RV? Built-in RV battery charger/converters, aren't LiFePO4 battery compatible. Here's what ...



Comparing Solar Batteries and Inverter Batteries: Key ...

Explore the key distinctions between solar battery and inverter battery systems for efficient energy storage in India's unique climate.

Compatibility of Lithium-Ion Batteries with Existing ...

Can I use a lithium-ion battery with any inverter?
While many ...



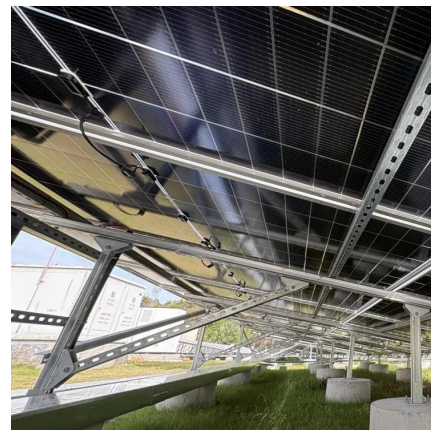
Can I use LiFePO4 Battery in Inverter?

As the central part of a solar system, the inverter plays a very important role. With the development of battery technology, most applications have been converted from lead-acid ...



Importance of Compatibility Between Inverter and ...

Inverters that are not designed to work with lithium batteries may overcharge or undercharge the battery, leading to premature degradation. ...



Compatibility of Lithium-Ion Batteries with Existing Inverters

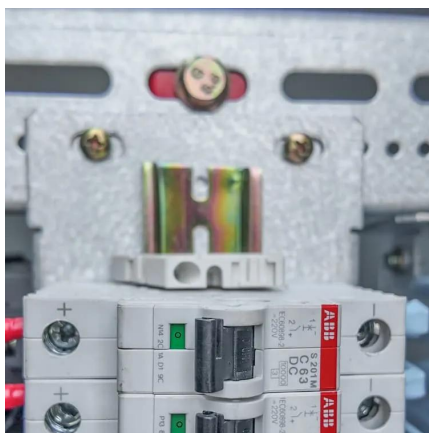
Can I use a lithium-ion battery with any inverter? While many inverters can be adapted to work with lithium-ion batteries, it's essential to check the specifications and compatibility of your ...





Understanding the Basics of Connecting Lithium ...

Most inverters are designed for 12V, 24V, or 48V systems, so the battery should match this requirement. Also, ensure the inverter's power rating ...



Importance of Compatibility Between Inverter and Lithium Battery

Inverters that are not designed to work with lithium batteries may overcharge or undercharge the battery, leading to premature degradation. Ensuring compatibility means that ...

Why Lithium Ion Battery For Inverters Is Ideal

Fast Recharging: Lithium ion batteries can be quickly recharged, which is especially important for applications that need a regular power supply, such as inverters. Low ...



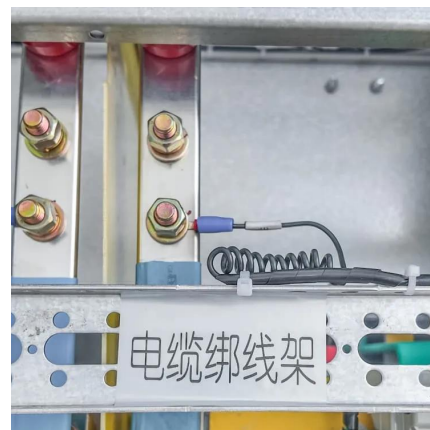
Battery Choices for Home Power Inverters: What ...

Explore the different types of batteries (lead-acid, lithium-ion, etc.) used with home power inverters. Discuss the pros and cons of each type, their ...



Do I need a special inverter for Lithium battery?

You don't necessarily need a special inverter for a lithium battery, but compatibility is critical. Here are the important points to consider when deciding the correct answer. The ...



Will a lithium battery work on this inverter? : r/batteries ...

Yes, you can use a battery that provides a sustained 100A current, if you want nearly 2000W. It probably cannot safely charge it. It might be able to charge ...

Which Battery Is Best for an Inverter? - leaptrend

How to Maximize Battery Performance Avoid Deep Discharges: Keep lead-acid batteries above 50% charge; lithium-ion can handle deeper ...



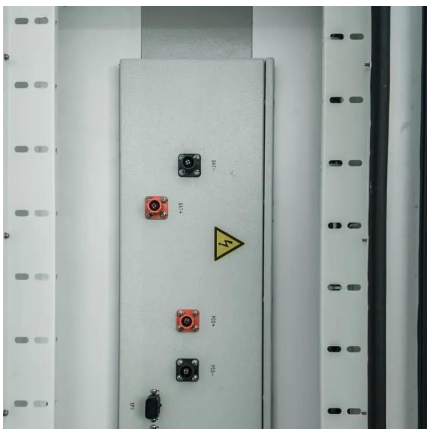


Lithium Battery for Inverter: Pros, Specs, and Tips

Can I replace my lead-acid battery with lithium in my inverter system? Yes, but you must ensure your inverter and charger are compatible with lithium charging profiles.

Understanding the Basics of Connecting Lithium Batteries to Inverters

Most inverters are designed for 12V, 24V, or 48V systems, so the battery should match this requirement. Also, ensure the inverter's power rating (in watts) can handle the load ...

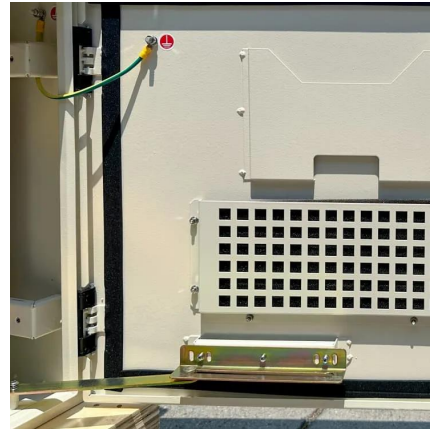


How to Choose the Right Inverter for Lithium Batteries?

Answer: To choose the right inverter for lithium batteries, match the inverter's voltage and capacity to your battery's specifications, prioritize pure sine wave inverters for ...

Can you use a lithium battery in place of a regular battery?

Featured Snippet: Yes, you can use a lithium battery in place of a regular lead-acid battery, but it requires careful consideration of compatibility, charging systems, and monitoring ...



Do Lithium Batteries Need a Special Inverter? , IMPROVE BATTERY

Lithium batteries, including lithium-ion batteries and lithium iron phosphate (LiFePO4) batteries, don't necessarily require a special inverter specifically designed for lithium batteries.



Lithium Battery for Inverter: Pros, Specs, and Tips

Can I replace my lead-acid battery with lithium in my inverter system? Yes, but you must ensure your inverter and charger are compatible ...



[Do I need a special inverter for Lithium battery?](#)

You don't necessarily need a special inverter for a lithium battery, but compatibility is critical. Here are the important points to consider when ...



Lithium battery with an unsupported Inverter

A lot depends on how much your inverter can be adjusted for the charge the batteries. For drop in replacement of gel batteries LFP (LiFePO4) would be easier and safer ...



Do I Need a Special Inverter for a Lithium Battery?

Yes, using a lithium battery often requires a special inverter designed to handle the specific voltage and charging characteristics of lithium technology. Unlike traditional lead-acid ...

Is my inverter compatible for new LiFePO4 batteries?

24V 8S LiFePO4 batteries will work with that inverter, just in terms of the input voltage range. The TriStar TS-M-2 is a battery meter, not a solar charge controller. Do you ...



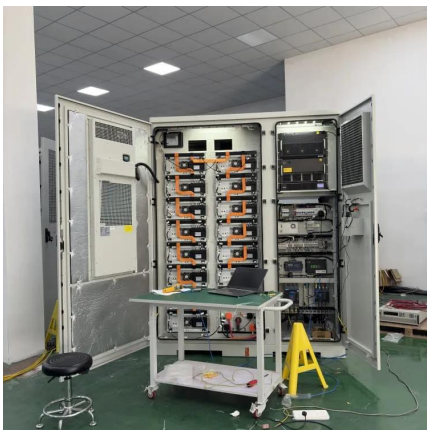
Can Lithium Batteries Work With Any Type of Inverter?

When setting up solar energy systems or home energy storage, a common question arises: Are lithium batteries compatible with all inverters? The short answer is no - proper ...



Can I Connect Inverter to Lithium Battery?

Yes, you can connect an inverter to a lithium battery. Lithium batteries, particularly Lithium Iron Phosphate (LiFePO4) batteries, are well-suited for use with inverters due to their ...



Can all inverters use lithium batteries?

Not all inverters are designed to work with lithium batteries, so it's essential to ensure that your chosen inverter can support this type of battery. The first thing you need to ...

Understanding Hybrid Inverters with Lithium Batteries

Understanding Hybrid Inverters with Lithium Batteries In the realm of renewable energy, hybrid inverters paired with lithium batteries are ...





Which Battery Capacity Is Best for Inverter

Most inverter systems use either lead-acid or lithium-ion batteries, each with distinct advantages: Flooded Lead-Acid (FLA): The most affordable option but requires regular ...

Understanding Battery Capacity and Inverter Compatibility

This calculation assumes ideal conditions with no inefficiencies. In reality, factors such as inverter efficiency and battery discharge characteristics might affect the actual run ...



Can Lithium Batteries Work With Any Type of Inverter?

When setting up solar energy systems or home energy storage, a common question arises: Are lithium batteries compatible with all inverters? ...

Contact Us

For catalog requests, pricing, or partnerships, please visit:
<https://www.talbert.co.za>