

Can lithium battery packs be discharged in parallel





Overview

Can You charge a lithium battery in parallel?

Once you connect lithium batteries in parallel, you need to charge and discharge it as a whole system, so try to avoid a 100% discharge. A battery monitor can help you with this, cutting off the loads at a safe level long before your battery is close to discharge.

How many lithium batteries can enerdrive run in parallel?

Most lithium batteries on the market will have an inbuilt battery management system which will prevent over discharge. Enerdrive supports running its B-TEC batteries lithium batteries in parallel. It recommends a maximum battery bank size of four lithium batteries of equal voltage and amperage.

Can lithium cells be charged in parallel?

There's no problem in putting lithium cells in parallel as long as they're similar, if you charge them in parallel they'll equalize, when you discharge them in parallel they'll discharge at approximately the same rate. Usually what leads to issues is unregulated lithium cells being charged and discharged in a series.

Should lithium ion batteries be wired in series or parallel?

When wiring lithium-ion batteries in series, the voltage is changed which can damage equipment if not performed with caution and great understanding. In contrast, wiring lithium batteries in parallel keeps the voltage the same while simply giving the batteries the ability to supply that same voltage level for longer.

Why do I need to add batteries in parallel?

If your load requires more current than a single battery can provide, but the voltage of the battery is what the load needs, then you need to add batteries in parallel to increase amperage. Wiring batteries in parallel is an extremely



easy way to double, triple, or otherwise increase the capacity of a lithium battery.

Why do lithium ion batteries need to be connected in series?

To meet the power and energy requirements of the specific applications, lithium-ion battery cells often need to be connected in series to boost voltage and in parallel to add capacity . However, as cell performance varies from one to another [2, 3], imbalances occur in both series and parallel connections.



Can lithium battery packs be discharged in parallel



How To Wire Lithium Batteries In Parallel Increase ...

In this article, we will explain why you would want to wire lithium-ion batteries in parallel, how you wire them in series and how to charge battery ...

What are the problems with lithium batteries in parallel?

In parallel, lithium batteries collectively supply current to the load; ideally, they share the load evenly. However, differences in battery health, capacity, or internal resistance ...



Will Batteries Balance in Parallel? (What Does a ...

We will be discussing how to properly balance lithium batteries in parallel so that each battery gets an equal amount of charge and discharge.

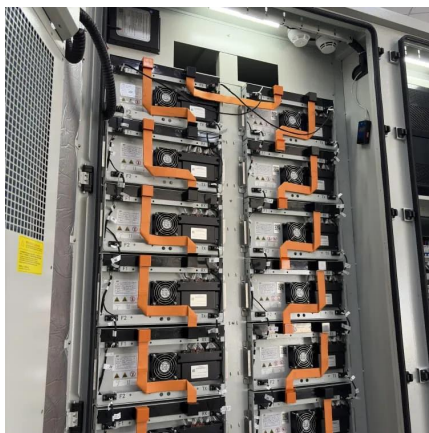
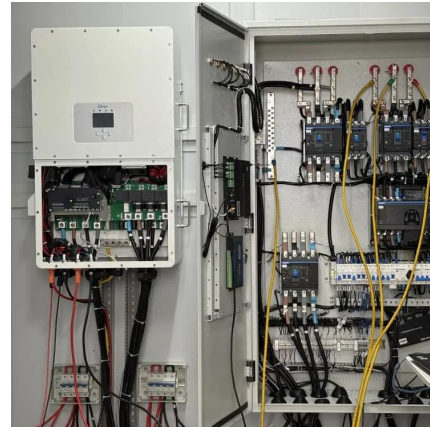
...

Can Lithium Batteries with Different Capacities Be Connected in Parallel?

Connecting lithium batteries in parallel is a common practice to achieve higher voltage and



capacity, widely used in applications such as power tools, electric vehicles, and ...

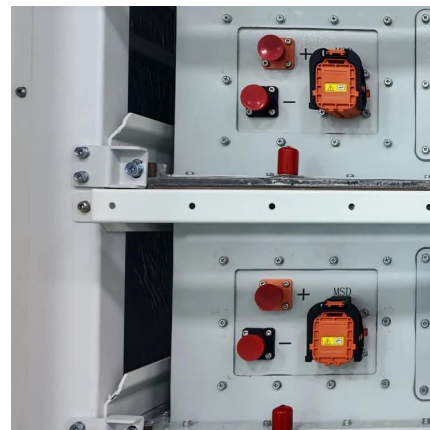


Mixing lipo and lithium ion batteries

Lithium ion batteries have high specific energy and lipo have high c rating (high power). Is it possible to put lipo and lithium-ion batteries in parallel if they are at the same ...

How should I connect multiple Lithium Polymer battery packs in parallel?

There's no problem in putting lithium cells in parallel as long as they're similar, if you charge them in parallel they'll equalize, when you discharge them in parallel they'll ...



Can you safely wire lithium-ion cells in parallel and charge and

For the first part of your question, yes. In a 2/3/4P lithium ion pack, cells are wired in parallel. In this configuration, they are self balancing without any circuitry. The cells don't even ...



Can I parallel multiple Lithium Battery Packs?

The short answer is yes, you can parallel multiple lithium battery packs. However, there are several factors you need to consider to ensure a safe and efficient operation.



Can Lithium Batteries with Different Capacities Be Connected in ...

Connecting lithium batteries in parallel is a common practice to achieve higher voltage and capacity, widely used in applications such as power tools, electric vehicles, and ...

Management of imbalances in parallel-connected lithium-ion battery packs

Uneven electrical current distribution in a parallel-connected lithium-ion battery pack can result in different degradation rates and overcurrent issues in the cells. Understanding the ...



Connecting Lithium Batteries in Parallel: What You ...

Once you connect lithium batteries in parallel, you need to ...



Connecting Lithium Batteries in Parallel: What You Need to Know

Once you connect lithium batteries in parallel, you need to charge and discharge it as a whole system, so try to avoid a 100% discharge. A battery monitor can help you with this, ...



Understanding Parallel Connections in DC Power ...

No, it's not recommended to mix batteries of different capacities, ages, or chemistries in a parallel connection. Doing so can cause imbalances, ...

[Connecting Lithium Batteries in Parallel](#)

Regularly monitor the battery system using the BMS to detect any abnormalities or imbalances. Conclusion In conclusion, connecting lithium batteries in ...





Battery Packs In Series Or Parallel: Key Differences And Wiring

Connecting battery packs in series increases the output voltage while keeping the capacity the same. In contrast, wiring them in parallel boosts the total capacity without ...

batteries

I have two lithium battery packs with separate BMS, Can I connect the packs in parallel, will the BMS get damaged or will something happen? 12v 10ah battery pack, I have ...



[How to Connect 18650 Batteries in Parallel](#)

Connecting 18650 batteries in parallel can increase capacity and allow higher discharge rates. But there are some important safety ...

Can batteries of same voltage but different capacities be

It's generally recommended to use batteries with matching capacities and matching voltages when connecting them in series and/or in parallel to ensure optimal performance and ...



How should I connect multiple Lithium Polymer battery packs in ...

There's no problem in putting lithium cells in parallel as long as they're similar, if you charge them in parallel they'll equalize, when you discharge them in parallel they'll ...



Connect Lithium Batteries with Different Amp Hours Safely

Part 3. What are the risks of connecting lithium batteries with different amp hours? While connecting mismatched Ah lithium batteries is technically possible, critical risks require ...



Lithium Battery Series & Parallel Operation , Fact Sheets

Like individual cells, you can combine batteries together in parallel to achieve higher energy/power (amp-hours, amps). Up to two batteries can be put in parallel.





Optimal Currents for Parallel Connected Batteries , Renogy US

For a single parallel battery, maintain a charge and discharge current of 25A each. As you add more batteries, increase the current values in increments of 25A. Deviating from these ...

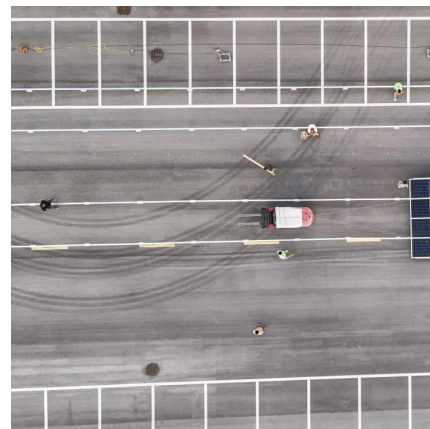


What are the problems with lithium batteries in parallel?

In parallel, lithium batteries collectively supply current to the load; ideally, they share the load evenly. However, differences in battery health, ...

How To Wire Lithium Batteries In Parallel Increase Amperage

In this article, we will explain why you would want to wire lithium-ion batteries in parallel, how you wire them in series and how to charge battery cells while in series.



Safety Tips for Connecting Batteries in Series and Parallel

Ensure safety when connecting a battery in series and parallel. Learn about risks like overcharging, thermal runaway, and mismatched cells, plus prevention tips.



How to Connect Batteries in Parallel

Connecting multiple lithium batteries in parallel can be a smart way to increase capacity and achieve longer-lasting power sources. However, ...



Management of imbalances in parallel-connected lithium-ion ...

Uneven electrical current distribution in a parallel-connected lithium-ion battery pack can result in different degradation rates and overcurrent issues in the cells. Understanding the ...

Battery Discharge Calculator Guide for Lithium-Ion & LiFePO4

To calculate discharge time for parallel lithium battery packs, first determine the total capacity by multiplying individual cell Ah by the number of parallel strings.





Can you safely wire lithium-ion cells in parallel and charge and

For the first part of your question, yes. In a 2/3/4P lithium ion pack, cells are wired in parallel. In this configuration, they are self balancing without any circuitry. The cells don't even have to be ...

[BU-302: Series and Parallel Battery Configurations](#)

BU-302: Configuraciones de Baterías en Serie y Paralelo (Español) Batteries achieve the desired operating voltage by connecting several cells in series; each cell adds its voltage potential to ...



[How to Charge Two Batteries in Parallel: A ...](#)

Learn how to charge two batteries in parallel safely and effectively. Follow these steps for optimal performance and battery longevity.

Contact Us

For catalog requests, pricing, or partnerships, please visit:
<https://www.talbert.co.za>