

Can lithium batteries be installed with inverters





Overview

Should you use a lithium-ion battery for a home inverter?

A lithium-ion battery for a home inverter can significantly enhance your home's energy storage capabilities. This translates to more reliable power during outages and better management of renewable energy resources like solar panels. Lithium-ion batteries require less maintenance and have a longer lifespan compared to traditional batteries.

Are all inverters compatible with all lithium batteries?

Not all inverters are compatible with all lithium batteries. Therefore, it is crucial to ensure that the inverter you choose is designed to work with the specific type of lithium battery you plan to use. Check Manufacturer Specifications: Both the battery and inverter manufacturers typically provide a list of compatible products.

Can a solar inverter be used with a lithium battery?

Integrating a solar inverter with a lithium battery can take your renewable energy setup to the next level. This combination allows for better energy storage, improved efficiency, and greater resilience during power outages. LiFePO4 batteries are particularly well-suited for solar applications because of their thermal stability and long cycle life.

Which battery should I use for my inverter?

When it comes to powering your inverter, there are a few alternative options to consider aside from lithium batteries. While lithium batteries have gained popularity due to their numerous advantages, they may not be the right choice for everyone. One alternative option is lead-acid batteries.

How do I install a lithium battery for inverter?

Understanding your inverter type is crucial to avoid potential issues down the line. The first step in installing a lithium battery for inverter with an existing



inverter is to assess your current setup. This includes evaluating the condition of your inverter and ensuring it meets the necessary specifications for lithium-ion batteries.

Can a lithium battery be used with a sine wave inverter?

Some examples include pure sine wave and modified sine wave inverters. These inverters may work better with lithium-ion batteries. Understanding your inverter type is crucial to avoid potential issues down the line. The first step in installing a lithium battery for inverter with an existing inverter is to assess your current setup.



Can lithium batteries be installed with inverters

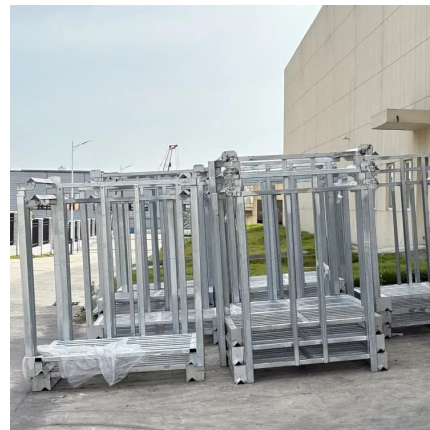


Can we install a Lithium-ion battery with Inverters

In this article, we'll explore this topic in detail, helping you understand the possibilities and challenges of integrating lithium-ion batteries with existing inverter setups.

Do Lithium Batteries Need a Special Inverter?

Lithium batteries, including lithium-ion batteries and lithium iron phosphate (LiFePO4) batteries, don't necessarily require a special inverter specifically ...



Can I Connect Inverter to Lithium Battery?

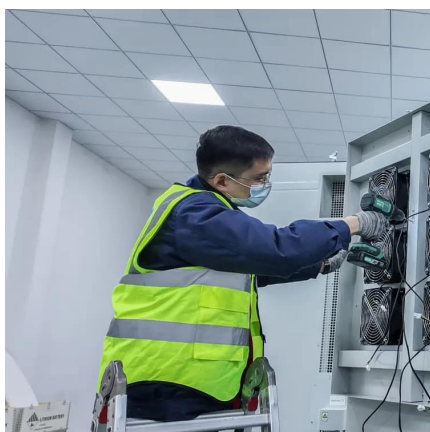
Yes, you can connect an inverter to a lithium battery. Lithium batteries, particularly Lithium Iron Phosphate (LiFePO4) batteries, are well-suited for use with inverters due to their ...

Can all inverters use lithium batteries?

Not all inverters are designed to work with lithium batteries, so it's essential to ensure that your chosen inverter can support this type of



battery. The first thing you need to ...



[Can I just put a lithium battery in my RV?](#)

Switching to lithium batteries for your RV can be a game-changer. These batteries offer superior performance, longevity, and efficiency compared to traditional lead-acid ...

Can Inverters and batteries be installed outside? : r/SolarUK

Some sales agents were telling me I can install batteries and inverters outdoor but some against it. For example, Octopus agent was telling me the GivEnergy battery and inverter they supply ...



Hybrid Inverter and Lithium Batteries: Setup Guide ...

Not all inverters are compatible with all lithium batteries. Therefore, it is crucial to ensure that the inverter you choose is designed to work with the specific type ...



Importance of Compatibility Between Inverter and Lithium Battery

Inverters that are not designed to work with lithium batteries may overcharge or undercharge the battery, leading to premature degradation. Ensuring compatibility means that ...

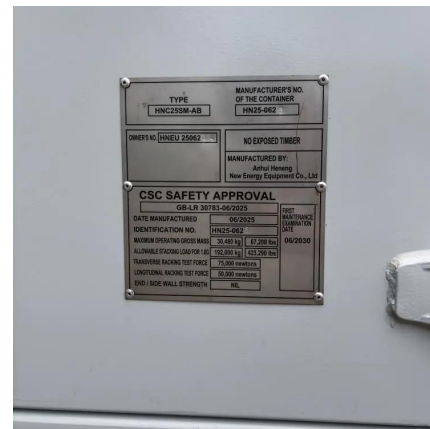


How to Install a Lithium Battery for Solar Panels?

Installing a lithium battery for solar panels involves selecting the right battery capacity, connecting it to the solar charge controller and inverter, and ensuring proper ...

Everything to Consider When Switching an RV to ...

Switching to lithium batteries is a common upgrade for RVers. But is it as simple as dropping in a new battery? No, and we tell you why.



How far from inverter can batteries be?

Adding a third conductor and a suitable ground wire gives you a lot more flexibility in how this run can be used in the future. And unlike batteries, panels, and inverters, this wire will ...



Industry update: home battery installations in lofts

Can you install a GivEnergy battery in a loft space? Here, we clarify a few key details when it comes to home battery installations.



[Can Lithium Batteries Be Mounted in Any Position?](#)

The ability to mount modern lithium batteries in almost any position, especially vertically in sleek wall-mounted units, is a huge advantage for creating clean and space ...

Understanding the Basics of Connecting Lithium Batteries to Inverters

Connecting a lithium battery to an inverter is crucial for converting the stored DC (Direct Current) energy into usable AC (Alternating Current) for household or industrial ...





Can Lithium Batteries Work With Any Type of Inverter?

When setting up solar energy systems or home energy storage, a common question arises: Are lithium batteries compatible with all inverters? ...

Compatibility of Lithium-Ion Batteries with Existing ...

This blog post will walk you through the essentials of lithium-ion ...



Can Lithium Batteries Work With Any Type of Inverter?

When setting up solar energy systems or home energy storage, a common question arises: Are lithium batteries compatible with all inverters? The short answer is no - proper ...



Can Lithium Batteries Be Installed on Inverters Your Complete ...

Discover how lithium batteries revolutionize energy storage when paired with inverters. This guide explores compatibility, installation best practices, and real-world applications for residential, ...



[RV inverter installation Guide , Renogy US](#)

Have difficulty in the RV inverter installation? Here's the comprehensive guide illustrating how to install an inverter in an RV.



Understanding Hybrid Inverters with Lithium Batteries

In the realm of renewable energy, hybrid inverters paired with lithium batteries are becoming increasingly popular for both residential and commercial applications. This ...



Compatibility of Lithium-Ion Batteries with Existing Inverters

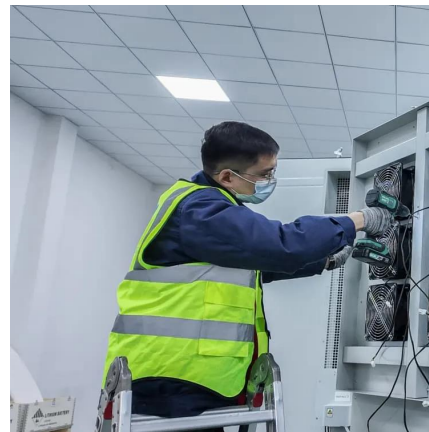
This blog post will walk you through the essentials of lithium-ion batteries, their benefits, and the steps to seamlessly integrate them with your current inverter setup. From practical examples ...





Understanding the Basics of Connecting Lithium ...

Connecting a lithium battery to an inverter is crucial for converting the stored DC (Direct Current) energy into usable AC (Alternating Current) for ...



Can we install a Lithium-ion battery with Inverters

In this article, we'll explore this topic in detail, helping you understand the possibilities and challenges of integrating lithium-ion batteries ...

[Can You Mix Different Capacity Lithium Batteries?](#)

You can add individual battery switches after the fuses. From the main busbar, it can go to your inverter, charge controller, or generator. The ...



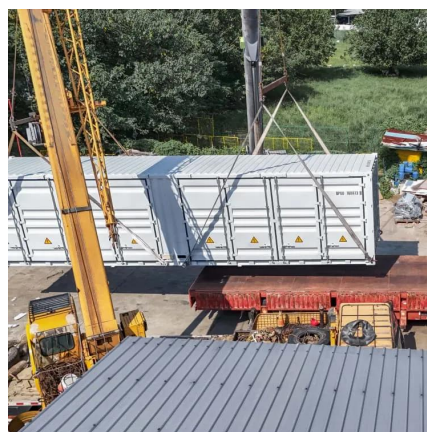
[Do Lithium Batteries Need a Special Inverter?](#)

Lithium batteries, including lithium-ion batteries and lithium iron phosphate (LiFePO4) batteries, don't necessarily require a special inverter specifically designed for lithium batteries. However, ...



Importance of Compatibility Between Inverter and ...

Inverters that are not designed to work with lithium batteries may overcharge or undercharge the battery, leading to premature degradation. ...



Lithium battery with an unsupported Inverter

Two gel batteries could be 12 Volts or 24 volts. A lot depends on how much your inverter can be adjusted for the charge the batteries. For drop in replacement of gel batteries ...

Recreational Vehicle Standards Update

Recreational Vehicle Standards Update: Lithium Batteries AS/NZS 3001.2:2022 has many new requirements relating to electrical safety in Recreational ...





Lifepo4 batteries in residential building

Hi, I'm building a LiFePo4-battery storage of 32 280Ah 3,2V cells, so it's going to have a capacity of 28kWh. It will be connected to 3 Victron ...

Understanding Hybrid Inverters with Lithium Batteries

In the realm of renewable energy, hybrid inverters paired with lithium batteries are becoming increasingly popular for both residential and ...



Hybrid Inverter and Lithium Batteries: Setup Guide and Best ...

Not all inverters are compatible with all lithium batteries. Therefore, it is crucial to ensure that the inverter you choose is designed to work with the specific type of lithium battery you plan to use.

Contact Us

For catalog requests, pricing, or partnerships, please visit:
<https://www.talbert.co.za>