

Can a high voltage inverter be charged for a long time





Overview

How long does it take an inverter to charge a battery?

Typically, an inverter may take anywhere from 6 to 12 hours to full charge a standard tubular battery. The key influencer here is the charger's output capacity—higher capacities result in faster charging times. Conversely, UPS systems tend to charge more quickly due to their smaller battery sizes and efficient charging mechanisms.

How long does it take to charge a ups & inverter?

The UPS and inverter charging time varies based on several factors, including battery capacity and charger efficiency. Typically, an inverter may take anywhere from 6 to 12 hours to full charge a standard tubular battery. The key influencer here is the charger's output capacity—higher capacities result in faster charging times.

How to charge an inverter battery?

Charging an inverter battery might seem daunting, but it's quite straightforward once you understand the steps. First, ensure that the inverter is turned off before connecting the battery. This avoids the risk of sparks or short circuits, which could harm both the battery and the inverter.

Why is my inverter not charging?

An inverter failing to charge the battery can be frustrating. Common reasons include incorrect settings, battery faults, or wiring issues. Firstly, verify the inverter settings to ensure they match your battery specifications. Battery issues can also hinder charging. Check for any visible signs of damage, such as swelling or leakage.

What are the problems with Inverter Batteries?

Inverter batteries can face several problems. Identifying these issues early helps in battery management. Here are some common problems:



Overcharging: This can damage the battery. It reduces its life. Undercharging: The battery doesn't get enough charge. It affects performance.

Does Overloading an inverter drain the battery faster?

Yes, overloading an inverter can drain the battery faster. When you connect too many devices, the inverter works harder and consumes more power. This leads to quicker battery depletion. Always use the inverter within its specified load capacity. Maintaining your inverter can prevent unnecessary battery drain.



Can a high voltage inverter be charged for a long time

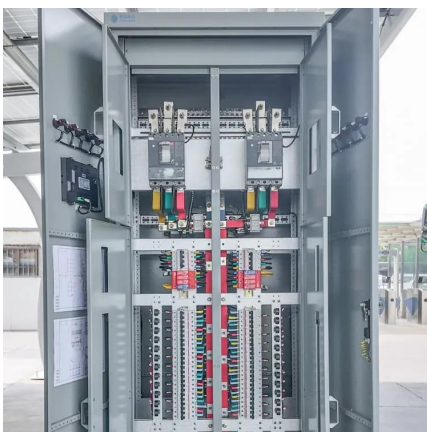


Optimizing LiFePO4 Battery Settings for Inverters: A ...

Learn how to safely charge and manage LiFePO4 batteries for inverters. Discover optimal voltage settings, avoid common pitfalls, and ensure ...

Charging A Battery While Using An Inverter: Tips For DIY ...

By following these tips, you can successfully charge a battery while using an inverter. Ensuring a proper connection can enhance the battery's longevity and optimize ...



How does an inverter help stabilize voltage fluctuations?

Predictive Control: Inverters can predict future voltage fluctuations based on historical data and real-time monitoring, taking preemptive measures to compensate for them. Multi-Inverter ...

Low voltage alarm and full battery. Is my inverter broken?

The low voltage alarm on both my inverter and charge controller are triggered whenever I try to



use anything high powered (around 750w or ...



ALL INVERTER PROBLEMS AND SOLUTIONS

The charged DC battery is then inverted back to AC (Alternating voltage) via a step up transformer, which is what supports the load ...

Is it safe for the inverter battery to be constantly ...

To recap, yes, it is healthy to charge the inverter all the time since technology has gone to the next level and inverter batteries have this built in ...



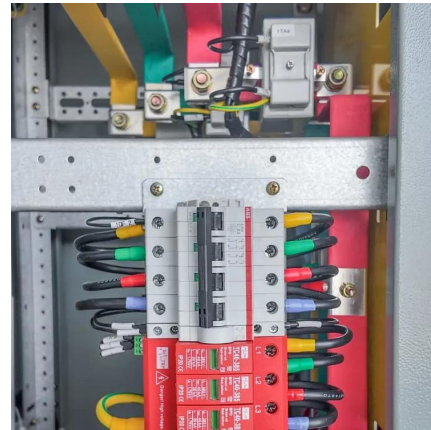
What Will An Inverter Run & For How Long? (With ...

I saw on many forums that most people are confused about what they can run on their 1000,1500,2000,3000, & 5000-watt inverter and how long ...



How To Charge Inverter Battery , Tips & Charging Time

The UPS and inverter charging time varies based on several factors, including battery capacity and charger efficiency. Typically, an inverter may take anywhere from 6 to 12 hours to full ...



How To Charge Inverter Battery , Tips & Charging Time

The UPS and inverter charging time varies based on several factors, including battery capacity and charger efficiency. Typically, an inverter may take anywhere from 6 to 12 ...

Can I Use an Inverter to Charge a Battery

Yes, you can use an inverter to charge a battery, but there are several important considerations. Inverters are devices that convert DC (direct current) power from a battery or ...



How to pre-charge an inverter easily

To precharge the circuit, you can simply move the switch from the off position to the resistor for a few seconds. Then, move it to the on position. When should I pre-charge my inverter? You ...



How to Keep Inverter from Draining Battery

Undercharging: The battery doesn't get enough charge. It affects performance. Sulfation: This happens when batteries are idle for long. Sulfate ...



How to Know If Inverter Battery Fully Charged?

For example, when an inverter battery is charging, the voltage range is 14.4-14.6 volts. When charging is almost complete, the voltage drops ...

HV Battery Guide for Solar Energy: High Voltage vs. Low Voltage

In high voltage battery systems, this monitoring is more sophisticated, often integrating with the inverter and even cloud-based diagnostics to provide real-time oversight.





Powering on the Go: Can a 300W Inverter Charge a Laptop?

A 300W inverter can be suitable for long road trips, but it depends on how often you need to charge your laptop and other devices. If you only need to charge your devices ...

Charging Battery While Connected To Inverter: The ...

Eventually, a power inverter will leave you with a dead battery unless you can charge your battery while connected to an inverter. This post will review how ...



How Long Does An Inverter Take To Charge?

In this article, we will provide comprehensive information on how long it takes for an inverter to charge, factors affecting the charging time, and tips for optimizing the charging ...

How Long Will a Deep Cycle Battery Power an Inverter?

Deep cycle batteries are designed to provide a steady amount of current over a long period. Unlike starting batteries, which deliver a quick burst of energy to start engines, deep cycle ...



[How to Calculate Inverter Battery Backup Time](#)

An inverter transforms DC power stored in batteries into AC power to supply electricity to your house. However, knowing how long it can sustain ...



What to Do When Your Inverter Battery is Fully Charged?

? Solar energy is a reliable and sustainable way to keep your inverter battery charged. However, knowing when your battery has reached full capacity is essential to prevent overcharging, ...



Charging Battery While Connected To Inverter (Explained!)

Can I charge a battery while it's connected to an inverter? in short, the answer is Yes, you can charge a battery while using an inverter. but make sure that the load should be ...





Reasons Why the Inverter Battery Continuously Charges

There can be several causes related to the inverter battery that can lead to the continuity of charging. Understanding these reasons is important to address the issue ...



[How to Keep Inverter from Draining Battery](#)

Undercharging: The battery doesn't get enough charge. It affects performance. Sulfation: This happens when batteries are idle for long. Sulfate crystals form on the plates. ...

Can I Use an Inverter to Charge a Battery? Benefits of Inverter

Yes, an inverter can be used to charge a battery. Inverters convert direct current (DC) from batteries into alternating current (AC) for household appliances, and some models ...



How Long Will a Deep Cycle Battery Power an Inverter?

Deep cycle batteries are designed to provide a steady amount of current over a long period. Unlike starting batteries, which deliver a quick burst of energy to ...



Can You Charge a Battery While Using an Inverter?

By charging the battery while using the inverter, you can avoid depleting energy too far and remove risk of damage. Plus, batteries have a certain lifespan based on charge cycles.



Is it safe for the inverter battery to be constantly charged?

To recap, yes, it is healthy to charge the inverter all the time since technology has gone to the next level and inverter batteries have this built in feature . When fully charged it ...

Reasons Why the Inverter Battery Continuously Charges

In conclusion, there can be various reasons why your inverter battery stays on charging. Whether it is due to the battery's charge cycle, the high load connected to the ...





Can You Charge a Battery While Using an Inverter?

By charging the battery while using the inverter, you can avoid depleting energy too far and remove risk of damage. Plus, batteries have a certain lifespan ...

Contact Us

For catalog requests, pricing, or partnerships, please visit:
<https://www.talbert.co.za>