

Can a 6kw inverter be used





Overview

Can a 6.6kw Solar System be paired with a 5kw inverter?

It is quite common for a 6.6kW solar system to be paired with a 5kW inverter. By oversizing the panels, you can maximise energy output and overcome the efficiency losses associated with rooftop solar panels. The price of a 6.6kW system with a 5kW inverter is the same as for a 6.6kW system, expect to pay between \$5,500 - \$8,000.

Is a 6 kW inverter worth it?

The combination of these two things means that it's probably not worth your while having a system at 6 kW. A 5 kW inverter will be the most cost effective. And the extra 1 kW of panels means that you'll get best use out of your inverter - it will spend more time running at its peak output.

Are 6kW & 6.6kw solar systems a good investment?

As individuals and organizations recognize the environmental and financial benefits of solar power, the demand for 6KW & 6.6KW solar systems continues to surge. These systems are capable of generating a substantial amount of electricity, making them ideal for residential and commercial purposes.

How do I choose a 6kW solar power system?

When considering a 6KW solar power system, it is essential to assess the roof space requirements to ensure sufficient area for panel installation. 4. 6KW solar systems have the potential to generate a significant amount of electricity, reducing reliance on traditional sources and lowering energy bills. 5.

How much power does a 5 kW inverter use?

If your system pushes 5,000 watts, a 5,000-watt (or 5 kW) inverter is usually the move. But it's not always one-to-one. Some setups undersize the inverter a bit—say, 4.6 kW for 5 kW of panels—to save cash without losing much



power. It's a balancing act between cost, performance, and when you actually use electricity.

How much power does a 6kW string inverter generate?

This 6kW string inverter kit requires up to 345 square feet of space and generate 400 to 1,000 kilowatt hours (kWh) of alternating current (AC) power per month. Not bad when you consider that the average American household averages 920kWh per month! Actual power generated will vary based on location, equipment and installation factors.



Can a 6kw inverter be used



What Will An Inverter Run & For How Long? (With ...

I saw on many forums that most people are confused about what they can run on their 1000,1500,2000,3000, & 5000-watt inverter and how long ...

3KW, 6KW, 8KW, and Beyond: Choosing the Right Hybrid Inverter

Choose the perfect hybrid inverter--3KW, 6KW, 8KW, or higher--for your energy needs. Compare features, efficiency, and scalability in this guide.



Can I add to my system with a third inverter for new panels?

You can add another inverter but if your just adding 3-4kw you might be able to add it to the existing inverter (s) if they are facing opposite directions without too much clipping, max ratio ...

The 6kw Hybrid Solar Inverter: Why You Need One ...

A 6kw hybrid solar inverter is perfect for those who want to combine the benefits of both solar



and fossil fuels. It can provide you with ...



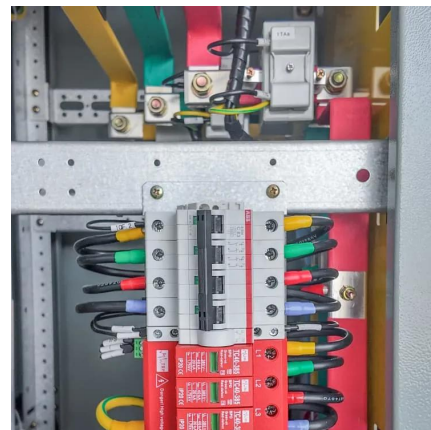
Luxpower 6kW Inverter SNA6000

The Luxpower 6Kw Off-Grid (with CT) Inverter SNA6000 is an Off-Grid inverter that can be used for both on-grid and off-grid solar systems. It has a maximum ...



What Size Solar Inverter Do I Need?

The type of inverter you have and how the battery is integrated into the clean energy system can impact the size of your inverter. Hybrid ...



What can be run with 6 kW solar panel

Inside this solar inverter, you get a solar charge controller of 50A current rating. On top of this solar inverter, you can install solar panels of up to 6 kilowatts and run a load of up to ...





[What Can Run with a 6kw Solar Panel System](#)

You can connect solar panels up to 7500W on this inverter, which means it can support a load of about 6kW. By installing 7500W panels on this inverter, you can create an ...



[Complete Guide to 6.6kW Solar System](#)

This guide focuses on the 6.6kW solar system, including its importance, components, output power, cost, and more. If installing a solar system is more complex, you ...

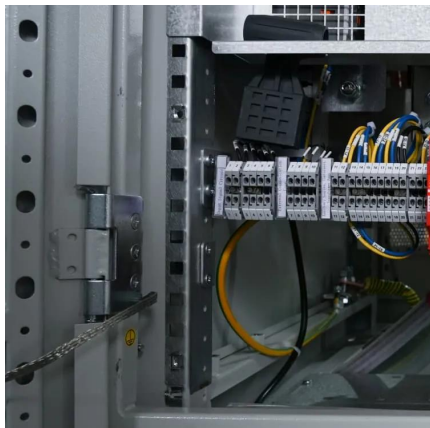
[Understanding 6KW & 6.6KW Solar System](#)

Choosing the right inverter is crucial for the efficient operation of a 6KW or 6.6KW solar system, as it converts the direct current (DC) generated by the panels into usable alternating current (AC).



[3KW, 6KW, 8KW, and Beyond: Choosing the Right ...](#)

Choose the perfect hybrid inverter--3KW, 6KW, 8KW, or higher--for your energy needs. Compare features, efficiency, and scalability in ...



The Complete Off Grid Solar System Sizing Calculator

Below is a combination of multiple calculators that consider these variables and allow you to size the essential components for your off-grid solar ...



Solar hybrid inverter

I have recently started looking into getting quotes for a solar + battery installation and been recommended 10x425W panels giving 4.25kWp (south facing). The installer ...

[New Solis inverter setup with batteries](#)

I have a related issue. Perhaps my understanding of the inverter (Solis) is incorrect, but I have 14 Solar panels capable of 5.5kW of generation and 6.4 kWh of batteries. However, ...



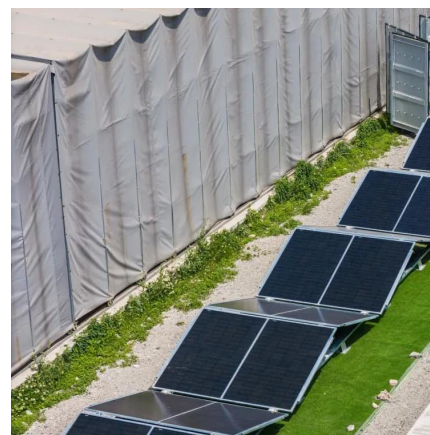


[What Can Run with a 6kw Solar Panel System](#)

You can connect solar panels up to 7500W on this inverter, which means it can support a load of about 6kW. By installing 7500W panels on this ...

10 Questions You Should Know About 6kW Inverter Solar Systems

A 6kW inverter solar system consists of solar panels and an inverter with a capacity to convert 6 kilowatts (kW) of solar energy into usable electricity. This capacity is adequate for ...



Are 6 KW Solar Inverters Over The Limit In Ireland?

Explore whether 6 kW solar inverters exceed the limit for residential installations in Ireland. Learn about regulations and how they impact your solar setup.



What Size Solar Inverter Do I Need? Experts Break It Down

Picking the right solar inverter isn't rocket science, but it's not a wild guess either. Match your inverter size to your solar panel output, leave a little headroom, and don't cheap ...



Understanding 6KW & 6.6KW Solar System

Choosing the right inverter is crucial for the efficient operation of a 6KW or 6.6KW solar system, as it converts the direct current (DC) generated by the panels ...



can a grid tied inverter be used not to feedback to the grid

Grid-Tie inverters are MPPT devices meaning they are programmed to output as much power as they can based on prevailing solar conditions. Whatever power is not used by ...



What Size Solar Inverter Do I Need? Experts Break It ...

Picking the right solar inverter isn't rocket science, but it's not a wild guess either. Match your inverter size to your solar panel output, leave a little ...





6kW Solar Inverter Guide 2025: Best Models, Installation & Costs

For a 6kW solar panel array, you typically need a 5-6kW inverter. Many installers use a DC-to-AC ratio of 1.2:1, meaning a 6kW inverter can handle up to 7.2kW of solar panels ...

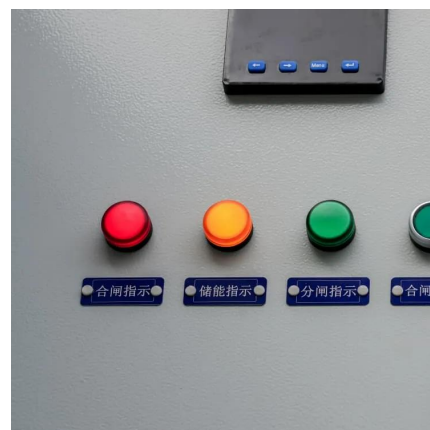


The 6kw Hybrid Solar Inverter: Why You Need One And What To ...

A 6kw hybrid solar inverter is perfect for those who want to combine the benefits of both solar and fossil fuels. It can provide you with power when the sun isn't shining, as well as ...

Battery and SolarEdge Home Hub Inverter Compatibility

Overview The table below displays the compatibility between different models of SolarEdge Home Hub Inverters, SolarEdge Home Batteries, and LG Chem batteries.



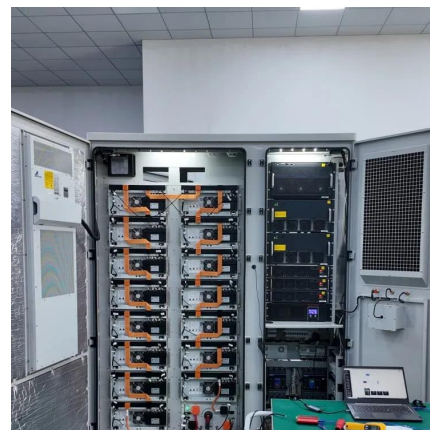
[What can be run with 6 kW solar panel](#)

Inside this solar inverter, you get a solar charge controller of 50A current rating. On top of this solar inverter, you can install solar panels of up to ...



US Pure Sine Wave Solar Inverter 3KW 3.6kw 6.5kw off Grid ...

(1). With dual activation function of lithium battery, Power saving mode available to reduce no-load loss. (2). Anti-countercurrent grid-connected function (photovoltaic hybrid power supply), grid ...



legal 6kw inverter limit, options?

if a 6kw inverter can handle my day-to-day loads (it can, ignoring peaks you mention, since im using a 6kw supply now without issues) then the peaks can be handled by ...

How to Choose the Right Size Solar Inverter: Step-by-Step with ...

This guide walks you through calculating inverter size based on panel capacity, power usage, and safety margins. We use real examples from installations in Texas and ...





[What Can a Solar System Run: 3KW, 8kW, 20kW](#)

What can a 3kW or 8kW solar system run in an average household? Discover the differences and make an informed decision for your ...

What circuit breaker can I use with a 6000/12000w 24v inverter

For a 6000W inverter on a 24V system you can pull up to 300A from the batteries. So you need to wire for 300A. The breaker should be about 25% larger than that so you really ...



Contact Us

For catalog requests, pricing, or partnerships, please visit:
<https://www.talbert.co.za>