

# Can a 6A battery be used with an inverter





## Overview

---

Yes, you can attach a small inverter directly to a battery, but doing it safely requires understanding voltage compatibility, wire sizing, and overload risks. Many DIYers assume it's as simple as clipping on cables—until sparks fly or devices fail. Are all batteries compatible with all inverters?

However, not all batteries are compatible with all inverters. To ensure a seamless and efficient operation, it's important to choose a battery that is well-suited for your specific power inverter. Before selecting a battery, it's essential to have a good understanding of your power inverter.

How many batteries can a 36V inverter charge?

If there are three 12V 200ah batteries, the battery voltage is 36V ( $12V \times 3 = 36$ ). An inverter with a 36V can recharge these batteries. The maximum capacity is 600ah ( $200 \times 3 = 600$ ). Battery Parallel Connection. If the battery bank is connected in parallel, the battery bank capacity increases but the battery voltage is the same as each cell.

Which battery is best for an inverter?

**Gel Batteries:** Gel batteries are a popular choice for inverter systems due to their durability and long lifespan. They are maintenance-free and offer excellent performance, making them ideal for long-term use as a backup power source. **AGM Batteries:** AGM (Absorbent Glass Mat) batteries are another reliable option for inverters.

How many batteries can I connect to my inverter?

There is no set limit to how many batteries you can connect to your inverter. But you must understand how you connect your batteries together affects what you can and can't do! For example, connecting your batteries in series will be different to connecting in parallel.

Can you use a battery with a power inverter?



Here are some essential battery considerations to keep in mind for using with a power inverter: There are different battery types available, each with its own advantages and disadvantages. The most common battery types used with inverters are lead-acid and lithium-ion batteries.

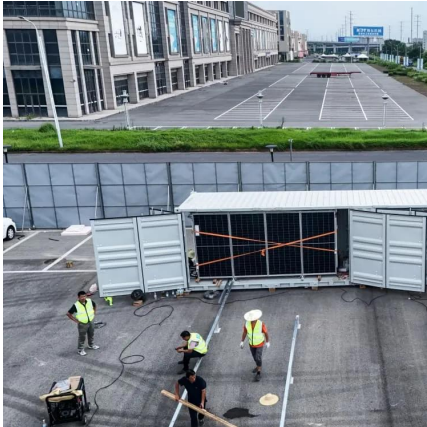
Do inverters and batteries need to match?

The inverter and batteries must match in terms of voltage, capacity, and power output. If you are using a 12V battery, then the input voltage of the inverter must match the battery voltage. If the specifications of the battery and the inverter do not match, the system will not operate stably and may even damage the equipment.



## Can a 6A battery be used with an inverter

---

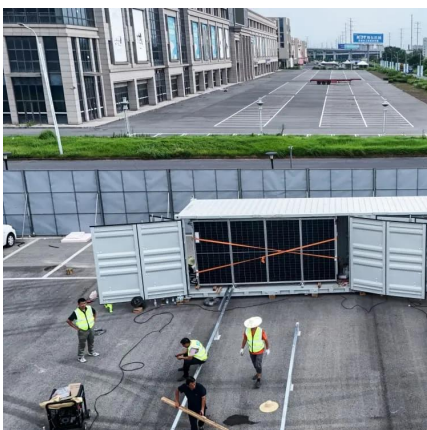


### [Exploring Battery Inverters: A Complete Overview](#)

Battery inverters can help balance the charging load, avoid grid congestion, and enable bidirectional energy flow between EVs and the grid for ...

### How to Safely Connect a Battery to an Inverter: A ...

Learn how to safely connect your batteries to your inverter with our guide. Avoid common wiring mistakes to optimize performance and extend ...



### How to Safely Connect a Battery to an Inverter: A Step-by-Step ...

Learn how to safely connect your batteries to your inverter with our guide. Avoid common wiring mistakes to optimize performance and extend system life.

### Can I Attach My Small Inverter Directly to the Battery?

Yes, you can attach a small inverter directly to a battery, but doing it safely requires



understanding voltage compatibility, wire sizing, and overload risks. Many DIYers assume it's ...



### [12 Volt Battery Run Time Calculator](#)

Do you have a 12v device you need to power but don't know what 12-volt battery you need? For those running a continuous 12-volt load, an adequately sized deep-cycle ...

### **Compatibility of Lithium-Ion Batteries with Existing Inverters**

In summary, installing a lithium-ion battery with an existing inverter is not only feasible but also highly beneficial. From improved efficiency and performance to enhanced energy storage and ...



### **Compatibility of Lithium-Ion Batteries with Existing ...**

Lithium-ion batteries are a type of rechargeable battery that has gained widespread use because their high energy density and efficiency. Unlike ...





## How Big of an Inverter Can My Car Battery Handle?

Yes, you can run a 2000 watt inverter on a car battery, but there are several important factors to consider. Typically, a standard 12-volt automotive battery needs to have ...



## **Can You Use A Noco 10 Battery Charger While Connected To An Inverter?**

1 day ago · Yes, you can use a NOCO 10 battery charger while connected to an inverter--but with critical precautions. This setup is common for RVs, boats, and off-grid power systems. Many ...

## Best Battery Options to Use with an Inverter

By understanding battery voltage and considering the power requirements of your devices, you can choose the best battery options to use with an inverter. Ensuring the right ...



## **Can You Use an Inverter as an UPS Backup? , Mingch**

Yes, you can use an inverter with a battery as a UPS (Uninterruptible Power Supply) if it supports fast switching and stable voltage ...



## Ultimate Guide to Battery in Inverter: Choose & Maintain Right

Discover how to choose, maintain, and maximize your battery in inverter for reliable backup power. Expert tips on inverter batteries, lifespan, and safety included!



## Has anyone tried the Ryobi 18v inverter to power their CPAP?

Home Depot has an 18v Ryobi inverter for \$70. I've got several of the 3a and 4a batteries. On a lark, I purchased the inverter in advance of this past weekend's snowstorm just ...

## Compatibility of Lithium-Ion Batteries with Existing ...

In summary, installing a lithium-ion battery with an existing inverter is not only feasible but also highly beneficial. From improved efficiency and performance ...





## How Many Batteries can Be Connected To An Inverter?

Yes, you can attach a small inverter directly to a battery, but doing it safely requires understanding voltage compatibility, wire sizing, and overload risks. Many DIYers assume it's ...

## Can a Solar Battery Be Used With a Normal Inverter?

Discover if a solar battery can connect to a normal inverter, helping you save on energy costs and optimize your home power system.



## Can an Inverter with a Battery Be Used as a UPS?

Conclusion While an inverter with a battery can technically function as a UPS, the suitability depends on the specific needs of the ...

## How Big of an Inverter Can My Car Battery Handle?

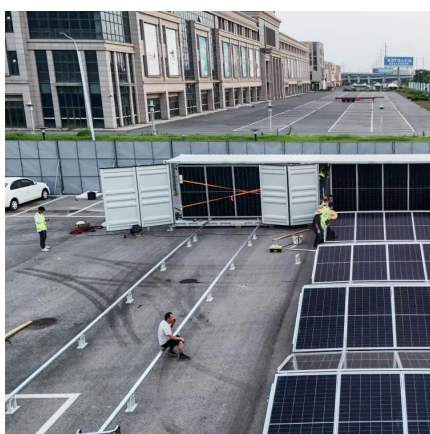
Yes, you can run a 2000 watt inverter on a car battery, but there are several important factors to consider. Typically, a standard 12-volt ...





## How Long Will A 12v Battery Last With An Inverter? Calculator

Pure sine wave inverters don't interfere with sensitive appliances Why is battery type important? Different battery technologies determines how much of a battery's capacity ...



## Can I Use A Car Battery For An Inverter? Connecting For Backup ...

Yes, you can use a car battery with an inverter to power electronic devices like laptops and chargers. Ensure the battery's compatibility and efficiency with the inverter.



## How Big Of an Inverter Can My Car Handle , Expert ...

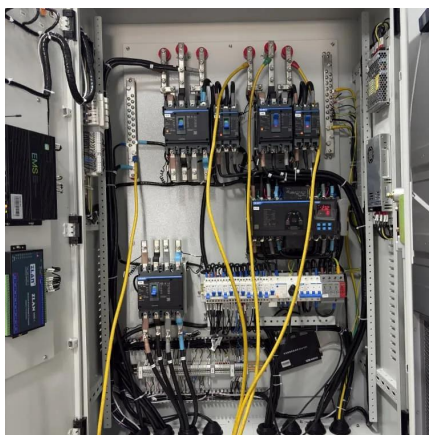
The inverter is the device that converts power from battery-powered electronics to the voltage used by your car (120 volts). The greater wattage an inverter can ...





## Understanding Battery Capacity and Inverter Compatibility

**Inverter Efficiency:** Lithium batteries generally work well with modern inverters, but checking the inverter's efficiency rating is advisable. Efficiency impacts the actual power ...



## Connecting Multiple Batteries to an Inverter: Easy Guide

No, you can't run a normal off-grid power inverter without batteries. You might be thinking of connecting directly to a solar panel, but this will deliver very poor ...

## Connecting Multiple Batteries to an Inverter: Easy Guide

No, you can't run a normal off-grid power inverter without batteries. You might be thinking of connecting directly to a solar panel, but this will deliver very poor performance.



## Can I Run a Mini Fridge Off an Inverter? (Quick Answers)

An inverter that can change the direct current (DC) power of the battery to alternating current (AC) that the mini-fridge can use. On average, a single medium-sized solar generator can use a ...



## How Many Batteries can Be Connected To An Inverter?

The charging current determines how many batteries you can use with an inverter. The battery capacity cannot exceed the charging current limits, otherwise the battery will take too long to ...



## Is it ok to use a car battery to power an inverter?

Yes it will work but there are factors that you do need to consider to determine suitability. Car batteries are heavy and large size. Lead acid car batteries are not usually ...

## [Power Inverters Guide :: CompactAppliance](#)

Learn everything you could want to know about Power Inverters. Your guide to safety tips, common uses, battery basics, and how to choose ...





## **Usual Energy , Empowering Sustainability for a Greener Future**

Learn how to connect an inverter to a battery with step-by-step guidance for efficient energy usage and sustainability.

## **Contact Us**

---

For catalog requests, pricing, or partnerships, please visit:  
<https://www.talbert.co.za>