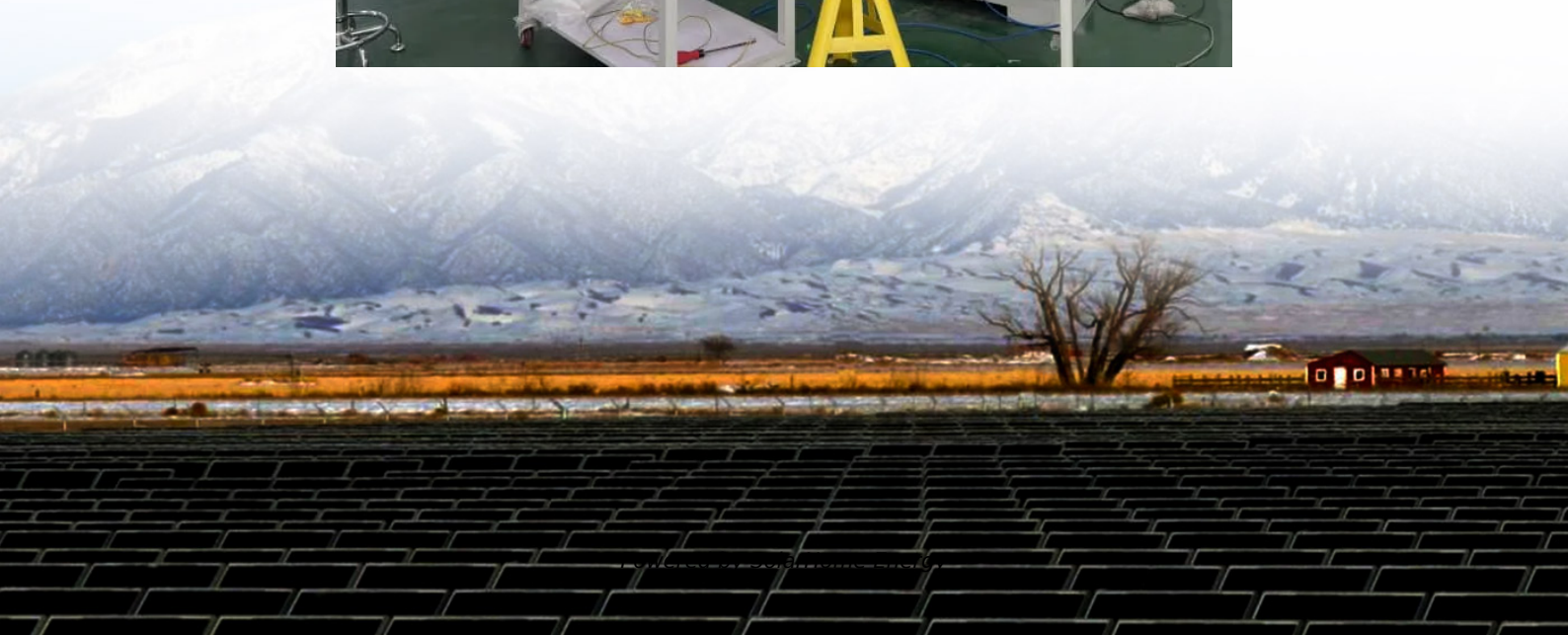


Can a 36v inverter be used with a 12v inverter





Overview

Can I use a 12V inverter with a 36V power system?

No, the inverter must match the system voltage. Use a 36V inverter. How long will my system run?

Depends on total Ah.



Can a 36v inverter be used with a 12v inverter



Solar Inverter, Solar Panel Power Inverter , inverter

Factory price split phase off grid inverter for sale online. This off grid solar inverter with 1000 watt rated power and the input voltage can choose from 12V or 24VDC. Off grid inverter adopts ...

12V, 24V, or 48V Solar Power System: Which Voltage Is Best for ...

To do this, you need to connect an inverter to the battery bank. It is important to match the battery bank voltage with an inverter that can handle that same voltage. Simply put, if you have a 12V ...



36v panel with 12v battery .. Help!

Hi there, So I've been given a 180w 36v solar panel and I would like to use it with a singular 12v battery .. There seem to be a lot of 12/24v MPPT controllers out there but I can't ...

36v INVERTER ON A 12v SYSTEM ? , DIY Solar Power Forum

A used battery distributor had a huge inventory of 36v lithium ion packs that they wanted me to

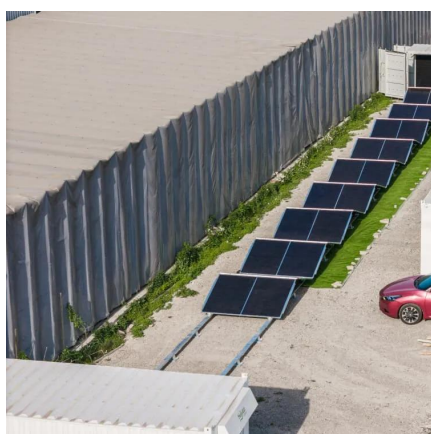


make a video on, and I denied it because I couldn't find a good inverter. I would ...



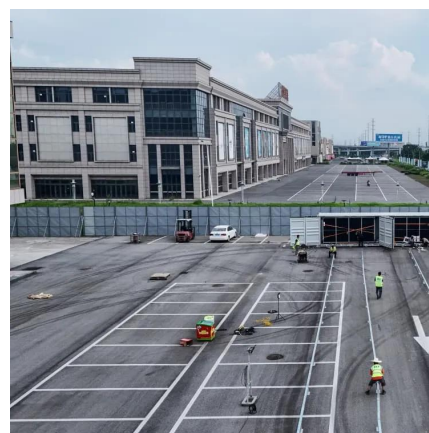
36v panel with 12v battery .. Help!

12 volt batteries usually are at 14 volts fully charged so a true 12 volt power supply will not charge them. 3 12 volt batteries would be about 42 volts fully charged so a 36 volt ...



Essential Guide to Using a 12V Inverter for 110V Power Needs

A 12V inverter converts DC (direct current) power from your vehicle's battery into AC (alternating current) power. This enables you to plug in standard household devices that ...



[Can I Charge a Car Battery with an Inverter?](#)

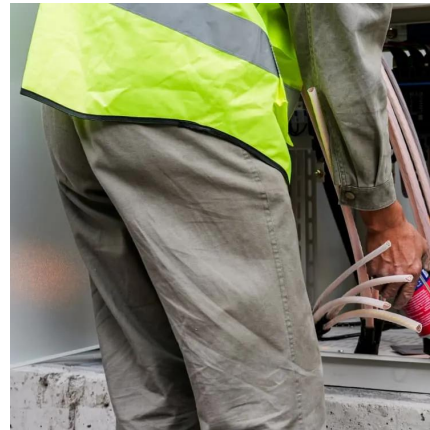
You can't use an inverter to charge a car battery directly, because the inverter outputs AC power, and battery charging requires stable DC power.





Inverter advice sought. 12 and 36 volt pure sine wave models.

He needs 12v because he wants to connect it to the 12v system on the Bolt, which is powered by the onboard DC-DC converter, taking HV power from the big battery and ...



[36 Volt Golf Cart battery to 12 Volt hook-up](#)

Got a PM about how I hooked 3 12 volt sources together on a 36 volt Golf Cart battery set-up, so I drew a picture in case someone else was interested. I use these Heavy ...

[The Best 36 Volt Power Inverters](#), [SolarKnowHow](#)

Looking for a 36 V inverter is often harder than finding a 12 V or 24V inverter since they are less common. Although not used as often, they still serve important roles in mid-range power ...



Can I charge my 36v golf cart on a 12v battery system?

So it doesn't really matter what voltage your battery is at the start, because you're converting it to get to 36V DC via an inverter and a charger. The faster your golf cart charger is, the more ...



Do I Need a Special Inverter for a Lithium Battery?

Yes, using a lithium battery often requires a special inverter designed to handle the specific voltage and charging characteristics of lithium technology. Unlike traditional lead-acid ...

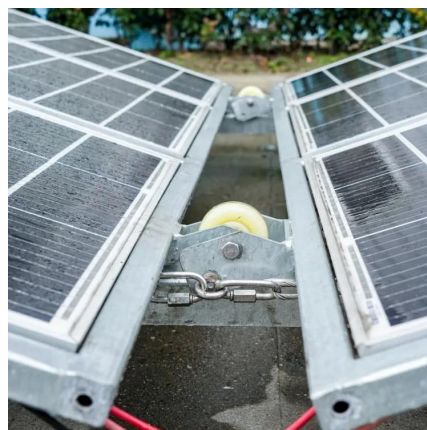


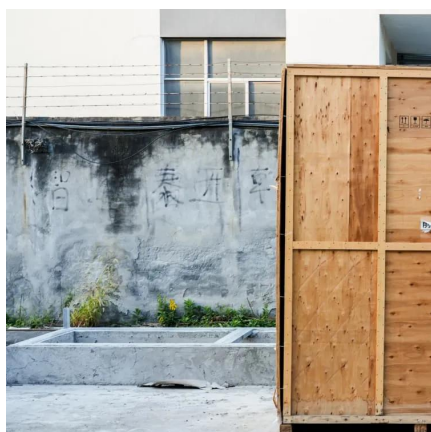
matching a 300w 36v solar panel to my 12v battery and 12/24v ...

Not always as not all controllers can handle that high of a voltage on a 12 volt battery. With a Grid Tied which you have, you should be using a MPPT Controller.

Wiring Six 12V Batteries to Build a 36V Power System

In this comprehensive guide, we'll take you step-by-step through the entire process, ensuring safety, efficiency, and maximum performance. A 36V power system offers ...





12v to 36v 30a converter? , Endless Sphere DIY EV ...

Let say, for arguments sake, that I happened upon a 12v 600AH Lifepo4 battery, that fully works and a 4000w inverter (both for free) and I want ...

[WZRELB 6000W 36V Pure Sine Inverter Review](#)

The WZRELB 6000W 36V Pure Sine Inverter can handle a surge of up to 12KW, meaning it can start devices that require a lot of power initially. For people who need reliable ...



[36V panel, 12v inverter what controller options??](#)

I have 4- 270 watt 36V Panels, a 12v 2500watt inverter, 100 of 12v18ah battery's and my goal is to learn and test solar options while running a pool pump for 8 hours a day.

Charging eBike on the Go (Car Battery, Inverter, ...

In total, when charging an eBike on the go, you can use a car battery with a 12V socket in the car. You can also use a 1000-watt inverter hooked up to a solar ...



Can I charge my 36v golf cart on a 12v battery system?

So it doesn't really matter what voltage your battery is at the start, because you're converting it to get to 36V DC via an inverter and a charger. The faster your golf cart charger ...



[Pure Sine Wave Inverter \(12v/24v/48v\) . inverter](#)

Pure sine inverter DC 12V to AC 110V/220V/230V/240V, 50/60Hz frequency can be selected. 200 watt pure sine wave inverter automatically shuts down when ...



36V Inverter for sale

Shop high-quality 36V inverters like the 3000W Pure Sine Wave Inverter and 36V to 120V Power Converter on eBay for smooth operation of your electronics.



The Differences Between 24v and 48v Inverter: Which is Better?

The correct inverter voltage is essential for system efficiency, safety, and future scalability. In standard off-grid solar systems, RVs, or mobile power installations, choosing ...



36 to 12 Volt o DWE

A 36V to 12V DC/DC converter, also known as an inverter, converts the input DC voltage to a 36V stabilised DC voltage. DWE supplies DC/DC converters with various input voltages over a ...

Connection Type for 36v Solar charge Controller ? : r/SolarDIY

Hi recently I purchased a MPPT Solar charge controller, it can be used for charging 12V,24V,36V and 48v batteries. I have 2500va solar inverter but...



Wiring Six 12V Batteries to Build a 36V Power System

In this comprehensive guide, we'll take you step-by-step through the entire process, ensuring safety, efficiency, and maximum performance. A ...



matching a 300w 36v solar panel to my 12v battery and 12/24v inverter

Not always as not all controllers can handle that high of a voltage on a 12 volt battery. With a Grid Tied which you have, you should be using a MPPT Controller.



[The Best 36 Volt Power Inverters . SolarKnowHow](#)

Looking for a 36 V inverter is often harder than finding a 12 V or 24V inverter since they are less common. Although not used as often, they still serve ...

[How to Change 36V to 12V Solar Cell](#)

Showing me that I have three sets of 12volt panels connected together in series to give 36volts. I will reconfigure them from series to parallel and walla.





Contact Us

For catalog requests, pricing, or partnerships, please visit:
<https://www.talbert.co.za>