

## **Can a 36v inverter be connected to 12v**





## Overview

---

What is a 36 volt to 12 volt converter?

Converting the voltage from 36 volts to 12 volts is a common necessity in many electrical systems. Whether it's for automotive applications, solar power systems, or other industrial settings, a 36v to 12v converter plays a crucial role in ensuring the compatibility and functionality of various devices.

How do I wire a 36V to 12V converter?

One of the key aspects of wiring a 36v to 12v converter is understanding the different input and output terminals. These converters generally have two primary input terminals for the 36v power source, usually labeled as positive (+) and negative (-).

How many watts is a 36V panel?

So, for example, let's say you put two 18V 100W panels in series, which will give you ~5.5A at 36V. You could then wire one 36V panel parallel to the string of two 18volters because they are both putting out the same voltage. How many watts is that 36V panel?

Let's say for example that it is a 300W panel putting out 8.33A at 36V.

How do you label a 36V to 12V converter?

Most 36v to 12v converters will have clearly labeled input and output terminals. The input terminals should be labeled as "36V" or something similar, while the output terminals should be marked as "12V" or "Output". Take note of these labels before proceeding.

Can I replace 18V panels with 36V panels?

The panels will deliver 36v ". This suggests to me that you could either be removing the 18V panels and replacing them with an unknown number of 36V panels, or alternatively adding new 36V panels along side the original panels.



Both are still doable, but with caveats mentioned above.

How many watts can a 36V controller charge?

So, your two parallel strings would be 5.5A at 36V and 8.33A at 36V, for a total of 13.83A at 36V. That is equal to 498W of panels total.  $498\text{W}/13\text{V charging} = 38.3\text{A}$ . So, that combination would be OK for your controller, because the max amperage is less than 40. Now, what if you have three 18V panels?



## Can a 36v inverter be connected to 12v

---

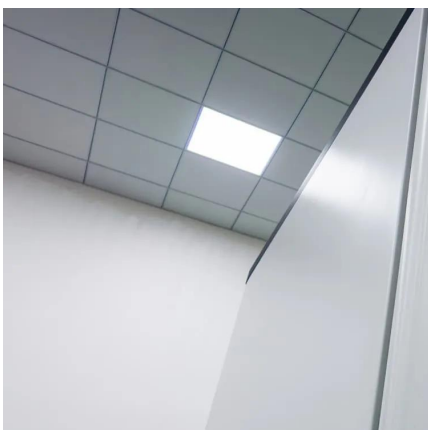


### [Using 36 v solar panel with 12 v battery](#)

Just make sure you connect your 12V battery before connecting the panels. Consider getting the RS485 com cable for the Tracer, download ...

### [Wiring Diagram for 36V to 12V Converter](#)

Learn how to wire a 36v to 12v converter with a wiring diagram to power your 12v devices using a 36v battery system.



### [Wiring Diagram for 36V to 12V Converter](#)

Learn how to wire a 36v to 12v converter with a wiring diagram to power your 12v devices using a 36v battery system.

## 12v Solar without a Battery

If you have a small 12v appliance that you wish to power/charge when the sun is out, you can use a 24v36v to 12v step down converter. This





will modulate the power produced by your solar ...



## 12v Solar without a Battery

If you have a small 12v appliance that you wish to power/charge when the sun is out, you can use a 24v36v to 12v step down converter. This will modulate the ...



## Lithium Series, Parallel and Series and Parallel Connections

How to connect lithium batteries in series 2.1 Series Example 1: 12V nominal lithium iron phosphate batteries connected in series to create a 48V bank 2.2 Series Example 2: 12V ...



## 36v INVERTER ON A 12v SYSTEM

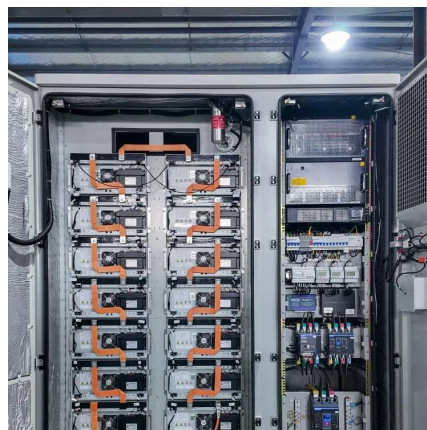
A used battery distributor had a huge inventory of 36v lithium ion packs that they wanted me to make a video on, and I denied it because I couldn't find a good inverter.





## Wiring Six 12V Batteries to Build a 36V Power System

A 36V power system created by wiring six 12V batteries in series is a smart and scalable solution for many medium-power applications. ...



## matching a 300w 36v solar panel to my 12v battery and 12/24v inverter

You already have the 12/24 volt inverter, so go with 24 volts and you have more rooms to grow later. if you have to use some 12 volts DC, you can get one of those 24 volt to ...

## Charging Battery While Connected To Inverter (Explained!)

Can I charge a battery while it's connected to an inverter? in short, the answer is Yes, you can charge a battery while using an inverter. but make sure that the load should be ...



## matching a 300w 36v solar panel to my 12v battery and 12/24v ...

You already have the 12/24 volt inverter, so go with 24 volts and you have more rooms to grow later. if you have to use some 12 volts DC, you can get one of those 24 volt to ...



### 36 Volt Golf Cart battery to 12 Volt hook-up

Got a PM about how I hooked 3 12 volt sources together on a 36 volt Golf Cart battery set-up, so I drew a picture in case someone else was interested. I use these Heavy ...



### Using 36 v solar panel with 12 v battery

Just make sure you connect your 12V battery before connecting the panels. Consider getting the RS485 com cable for the Tracer, download the free app to a laptop or ...

### **12V VS 24V Inverter: What are the Differences and ...**

The number of batteries you can connect to a 24V inverter depends on the amp-hour (Ah) capacity of the batteries and the inverter's power rating. For a 24V ...







## 36v panel with 12v battery .. Help!

There seem to be a lot of 12/24v MPPT controllers out there but I can't seem to find anything of a decent price that can handle 36v input and 12v output. My question is, can I use ...

## Ultimate Guide of LiFePO4 Lithium Batteries in Series ...

The number of batteries that can be connected in series is typically determined by the battery manufacturer's specifications. For instance, LiTime allows for a ...



## Reduce 36V solar panel output to 12V

I have a solar panel that has a 36V output. I'd like to be able to reduce it to 12V so it can be fed into a charge controller connected to a 12V deep cycle battery. Is that feasible, and ...

## Can you charge a 36v battery with a 12v charger?

3.3: If the 36V battery is a battery pack with several small cells connected in series to get. You can separate it into multiple small cells, taking care that the voltage of each small ...





## Calculate Battery Size For Any Size Inverter (Using Our Calculator)

Battery size chart for inverter Note! The input voltage of the inverter should match the battery voltage. (For example 12v battery for 12v inverter, 24v battery for 24v inverter and ...



## Charger considerations for two 36v LiFePO4 batteries in series

For example: A 12V battery in series supports up to 4 batteries ( $12 \times 4 = 48V$ ). 24V batteries in series support up to 2 ( $24 \times 2 = 48V$ ). 36V/48V batteries do not support series ...



## [How to Change 36V to 12V Solar Cell](#)

Showing me that I have three sets of 12volt panels connected together in series to give 36volts. I will reconfigure them from series to parallel and walla.





### [36v Solar Panel to 12v Battery : r/SolarDIY](#)

As for an inverter (if you need one, to run AC loads) just get a decent pure sine wave inverter that works with your battery voltage. (So, in your case, a 12 Volt input pure sine wave inverter.)



### **Complete Guide to Wiring Batteries in Series - PowMr**

3 days ago · Wiring batteries in series is a common method used in solar power systems, RVs, golf carts, and other DC setups. 12V batteries are the most popular, offering flexibility for ...

### **36v to 12v**

Hi I've been having an issue with my diy solar generator. I can't seem to get the 12v buck converter to hold 12v it keeps dropping to around 9v I've already changed the buck ...



### [How To Connect Batteries In Series and Parallel](#)

We often get asked, "How do you create a higher-voltage battery pack?" The answer is you keep connecting batteries in series. For example, ...



## [How to Connect a Solar Panel to a 12V Battery?](#)

In this article, I will explain how to connect a solar panel to a battery step-by-step. I will also share a few tips you need to know along the way. Here ...

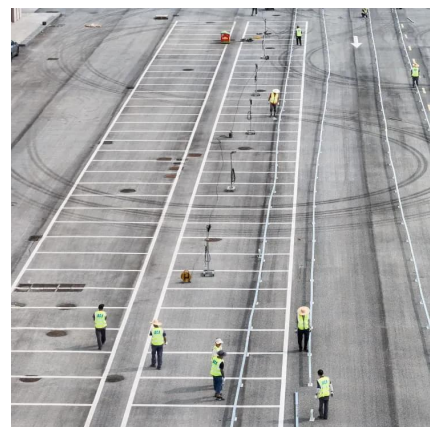


## **Holdwell DC-DC Converter 12V to 36V 5A 180W Step Up Booster ...**

Industry grade DC 12V to 36V step-up converter auto protect over voltage, over current, over temperature, short circuit,,can work in normal condition when restored. 100% waterproof & anti-shock protection Ultra compact size, light weight Auto-recovery when device is back to ...

## **12V vs 24V inverter**

This article introduces how inverter works and compares 12V vs 24V inverter, including the applications, costs, and other differences, also provides a guide on choosing the ...





## Wiring Six 12V Batteries to Build a 36V Power System

A 36V power system created by wiring six 12V batteries in series is a smart and scalable solution for many medium-power applications. Whether you're powering a solar ...

### 36 volt solar to 12 volt battery -- northernarizona-windandsun

Short Circuit Current: 3850A Max Discharge Current: 1500A (5s) Internal Resistance: 3.1 mOhms Recommended Charging Options: AC Chargers: Any Quality Brand AGM- Smart & ...



## Contact Us

---

For catalog requests, pricing, or partnerships, please visit:  
<https://www.talbert.co.za>