

Can a 36v 20a battery be used with an inverter





Overview

We want to get the maximum power from batteries and inverters, but at the same time we do not want to overdo it. By knowing the capability and capacity of your inverter, you can push to the limit without damage. The same goes with the batteries so you do not end up using too little or too much.

The first thing you have to do is figure out how much current is required. Fortunately the process are very simple. Suppose you have a high quality 200ah.

Both series and parallel battery bank connections have the same goal, boot capacity for longer service. For this to work, the inverter direct current voltage and.

Connect Batteries in a Series. To create a series connection, connect the battery positive + end to the negative - of the next battery. The positive = of the final.

First we need to define what an inverter is. An inverter converts DC power into AC power. If you install solar panels in an RV or at home, you need an inverter to run.

How many batteries can a 36V inverter charge?

If there are three 12V 200ah batteries, the battery voltage is 36V ($12V \times 3 = 36$). An inverter with a 36V can recharge these batteries. The maximum capacity is 600ah ($200 \times 3 = 600$). **Battery Parallel Connection.** If the battery bank is connected in parallel, the battery bank capacity increases but the battery voltage is the same as each cell.

How many batteries can a solar inverter charge?

This applies to all types of solar inverters regardless of size. The number of batteries you can connect to an inverter cannot be more than 12 times the inverter charging current. A 20A charger can handle 240ah battery maximum. The formula is $A \times 12 = \text{battery capacity (ah)}$. If it is a 40A charger the limit is 480ah.



How many batteries can I connect to my inverter?

There is no set limit to how many batteries you can connect to your inverter. But you must understand how you connect your batteries together affects what you can and can't do! For example, connecting your batteries in series will be different to connecting in parallel.

How many amps does a series battery inverter use?

So if the battery current limit is 20 amps, and there are two batteries in parallel, the inverter must provide 40 amps (20A x 2 batteries). This is not the case if the battery bank is configured in a series, because all the batteries have a similar current. Connect Batteries in a Series.

Do inverters need to be connected to batteries?

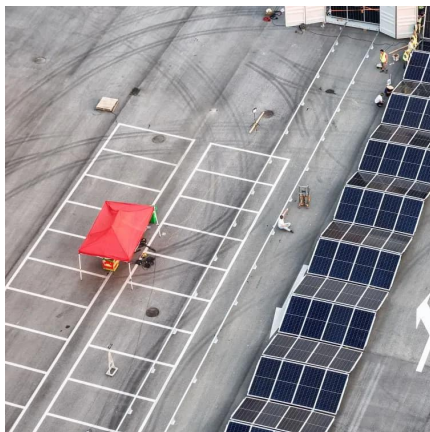
Connecting inverters to batteries is an important part of an off-grid power solution or backup power system, and the right connections ensure that the system runs efficiently.

Can you run an off-grid power inverter without batteries?

No, you can't run a normal off-grid power inverter without batteries. You might be thinking of connecting directly to a solar panel, but this will deliver very poor performance. Your power output will be limited to what the solar panel can produce which will vary all the time.



Can a 36v 20a battery be used with an inverter



How Many Batteries can Be Connected To An Inverter?

The charging current determines how many batteries you can use with an inverter. The battery capacity cannot exceed the charging current limits, otherwise the battery will take too long to ...

Help! solar charging a 36 v 20 ah lifepo4 battery with inverter

While driving the panel would run my LCD, and speaker system, lights, blinkers, horn, and such when stopped it would run the inverter powering the 36 volt 1.5 amp (54 watts) charger.



Can I just replace the battery with a higher AH one

HI, I was thinking of buying this 48V 10AH bike, and replacing the battery with an aliexpress one; a 48V 20 AH. As long as it fits the mount, can I just do that ? ...

How to Ensure the Inverter and Battery You Purchase Are ...

How to Ensure the Inverter and Battery You Purchase Are Compatible? Ensuring compatibility



between your inverter and battery is crucial for efficient energy storage and system ...



36v Solar panel with a 12/24v charge controller

In Parallel, you'd double the AMP rating while only getting 36V. BTW: 260W of Panel won't be able to charge a 12V/200AH battery very well. A 200AH battery can take up to ...



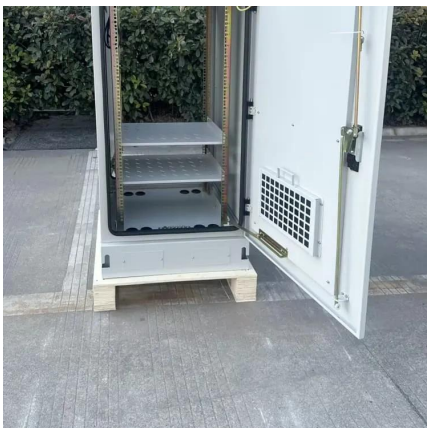
Understanding Battery Capacity and Inverter Compatibility

Inverter Efficiency: Lithium batteries generally work well with modern inverters, but checking the inverter's efficiency rating is advisable. Efficiency impacts the actual power ...



Complete Guide to Wiring Batteries in Series - PowMr

3 days ago· Wiring batteries in series is a common method used in solar power systems, RVs, golf carts, and other DC setups. 12V batteries are the most popular, offering flexibility for ...





How Do You Choose the Right Inverter Size for Your Specific ...

To choose the right inverter size for your specific power needs, first calculate your total power requirements in watts. Multiply the battery capacity (in Ah) by its voltage (typically ...



How to Safely Connect a Battery to an Inverter: A Step-by-Step ...

Learn how to safely connect your batteries to your inverter with our guide. Avoid common wiring mistakes to optimize performance and extend system life.

[How to Properly Charge a 36V Lithium Battery](#)

To properly charge a 36V lithium battery, use a charger specifically designed for lithium batteries that matches the battery's voltage and current ...



Can You Use 24V & 36V Solar Panels To Charge A ...

A 36-volt solar panel can be used to charge a 12-volt battery. A charge controller is used to regulate the volt output from the solar panel and ...



How to Properly Size Solar Panels for Your 36V Lithium Battery

An inverter converts DC (direct current) stored in the 36V lithium battery into AC (alternating current) for household appliances. When sizing the inverter, consider peak power ...



Can a 36v battery run a 48v motor without issues?

I have a 48v 500w hub with a "36v Battery" and a "36v 500w Controller." I've been riding it for a week now without any issues. The ultimately question is: Will I ever run into any issue with the ...

USER MANUAL

Do not immerse the batteries in water. Keep the batteries in a dry environment. Use of a battery box in marine environments is recommended (please note, even DL's waterproof marine ...





How to Safely Connect a Battery to an Inverter: A ...

Learn how to safely connect your batteries to your inverter with our guide. Avoid common wiring mistakes to optimize performance and extend ...

[Running 24v & 36v on the same controller](#)

You can use a controller rated for 36V on a 24V system, but you need to make sure it doesn't have an LVC or that it is already set low enough for your 24V pack (or you have to ...

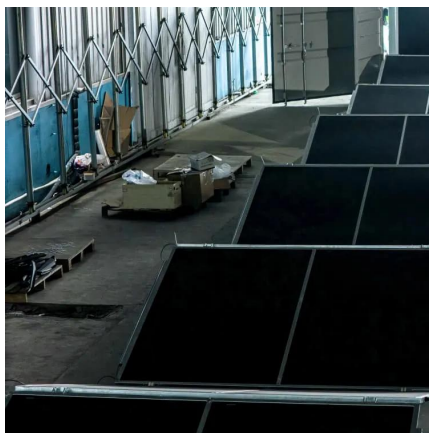


[Is it possible to run 36v motor on 48v battery?](#)

Hey Guys, Regarding my previous thread, I've found a suitable narrow motor with disc brake mount and nice customer service, but the motor is 36v, and my battery is little ...

Setting up my 36v battery system to be charged by solar

This forum discusses setting up a 36V battery system for solar charging, including wiring and equipment considerations.

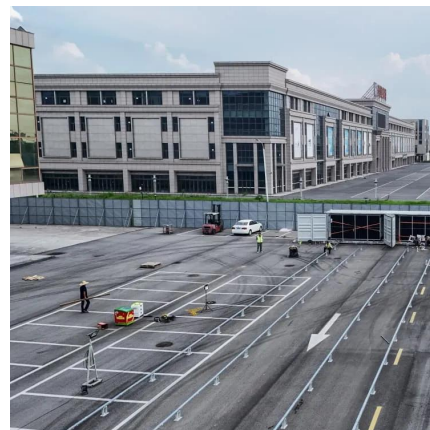


What can I do for home battery system using 36v batteries?

You might be able to use a 60V inverter. I use one directly with solar panels. 72V is within their range. 60V systems have some popularity in Europe.

Battery Runtime Calculator

How long will your battery last? find out with our easy-to-use battery runtime calculator. Calculator Assumptions This calculator will consider the efficiency of an inverter (90%) and the efficiency ...



Calculate Battery Size For Any Size Inverter (Using Our Calculator)

To recharge your battery from time to time you would need the right size solar panel to do the job! Read the below article to find out the suitable solar panel size for your battery bank



question about amps and voltage regarding speed and torque

Then if you used the 48V battery on the 36V motor, you'd increase your speed and power considerably over using the 36V motor with the 36V battery. On the other hand, if you ...



Connecting Multiple Batteries to an Inverter: Easy Guide

No, you can't run a normal off-grid power inverter without batteries. You might be thinking of connecting directly to a solar panel, but this will deliver very poor performance.

Connecting Multiple Batteries to an Inverter: Easy Guide

No, you can't run a normal off-grid power inverter without batteries. You might be thinking of connecting directly to a solar panel, but this will deliver very poor ...



Contact Us

For catalog requests, pricing, or partnerships, please visit:
<https://www.talbert.co.za>