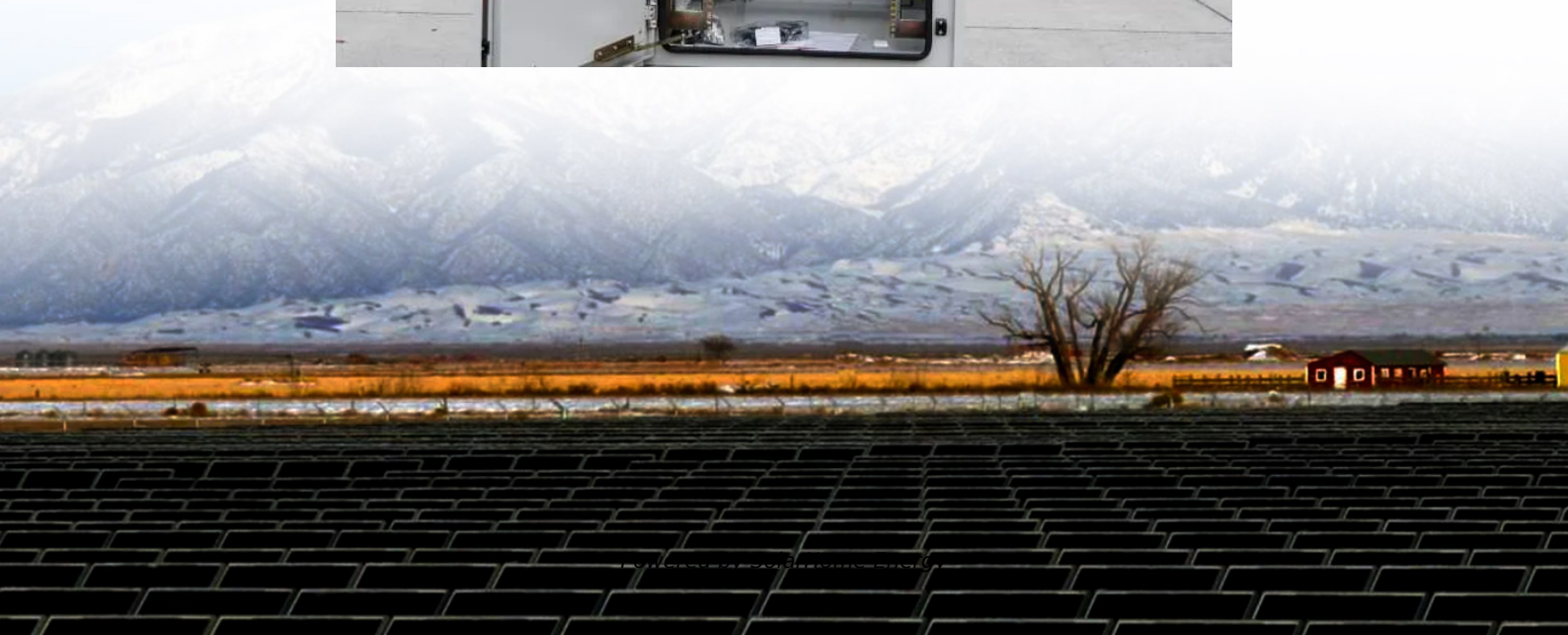


Can a 24v inverter be connected to a 12v





Overview

Can I use a 24V inverter on a 12V battery?

In conclusion, using a 24V inverter on a 12V battery is not advisable due to voltage mismatch, power limitations, and safety hazards. For a successful solar energy system, it's essential to use components that are compatible with each other, ensuring optimal performance and longevity.

Can a 12V solar panel use a 24V inverter?

A 12V solar panel must use with a 12V inverter and a 24V solar panel must use with a 24V inverter. On top of that a series connection is required to maintain the same voltage between the battery, inverter and the solar panel. Check out 12V, 24V and 48V inverters here. To keep things simple, just remember to keep the voltage the same.

Is a 24V inverter better than a 12V battery bank?

When you pair a 24V inverter with a 24V battery bank, the risk of a solar fire or arc are reduced and it also minimizes energy losses. The input regulation is also better compared to a 12V system, a 4.6% drop compared to 1.05%. A 24V system also does a better job converting DC to AC.

Should I upgrade my battery system to a 24V inverter?

If you have your heart set on a 24V inverter, consider upgrading your battery system to a 24V configuration. While this may involve some additional investment, it can significantly enhance the performance of your solar power setup.

How many batteries do you need for a solar inverter?

If you need 5000 watts of battery power you will need 2 x 300 12V batteries. Or you can buy a single 24V 300ah battery. This is important if space is an issue in your home. When you pair a 24V inverter with a 24V battery bank, the risk of a solar fire or arc are reduced and it also minimizes energy losses.



What is the difference between 12V and 24V inverter?

Better input regulation. 0.5v line drop at $12\text{v} = 4.6\%$ supply drop whereas 0.25 v line drop at $24\text{v} = 1.04\%$ drop. – Better inverter efficiency and regulation. i.e. Less losses converting to 240 VAC . An inverter doesn't have to work as hard to keep its AC output constant.



Can a 24v inverter be connected to a 12v

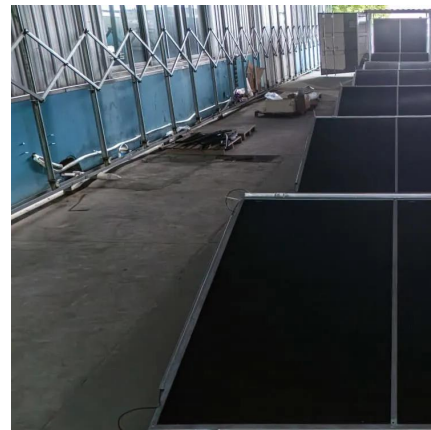


how to use 12V inverter on 24 volt (2 battery) system

Option 1: keep the 24v, sell the inverter and buy a 24v one. Option 2: make the entire system 12V. If you don't have more parts connected, it's as simple as connect the battery in parallel and ...

Basic: Can I Use a 24V Inverter in a 12v Solar Battery system

In conclusion, using a 24V inverter on a 12V battery is not advisable due to voltage mismatch, power limitations, and safety hazards. For a successful solar energy system, it's ...



[Powering a 12V inverter with 24V batteries?](#)

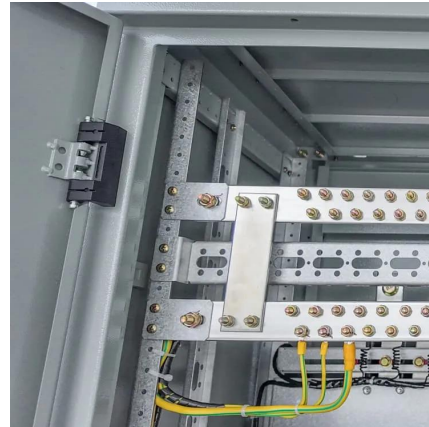
Powering a 12V inverter with 24V batteries?
Does anyone know if they make something like a 24V to 12V buck converter that can handle the ...

Can I Use a 24V Inverter with 4 Battery Banks? Wiring Strategies ...

For example, connecting multiple 12V banks can yield a 24V output, compatible with many



inverter types. Using multiple battery banks can significantly improve the performance ...

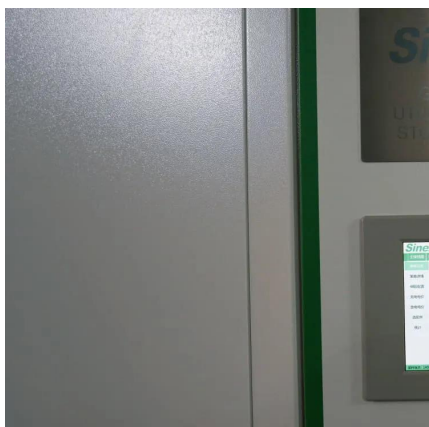
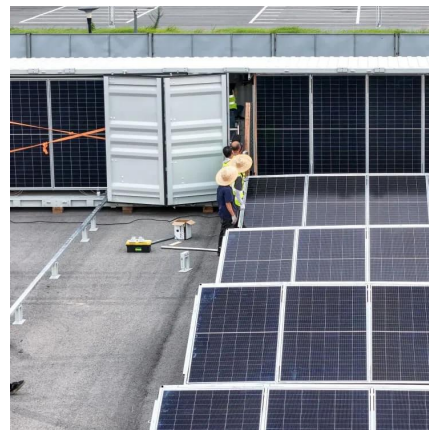


12V vs 24V Inverter: What's the difference between 12 ...

What's the Difference Between a 12 and 24 Volt Inverter? The difference between a 12V and 24V inverter is the amount of input volts it can handle. This is the ...

[Can I Use a 24V Inverter on a 12V Battery?](#)

It looks like bigger panels - 160w/24v offer simpler installation, are cheaper, and are more suited to longer cable runs, so that's what I'm looking at, along with an accompanying 24v charge ...



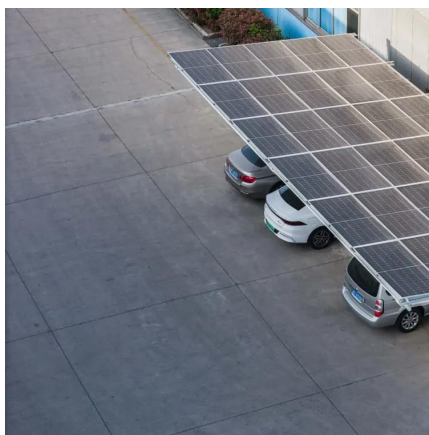
Basic: Can I Use a 24V Inverter in a 12v Solar Battery ...

In conclusion, using a 24V inverter on a 12V battery is not advisable due to voltage mismatch, power limitations, and safety hazards. For ...



Can I Use a 24V Inverter with a 12V Battery? Compatibility and

How Can I Safely Connect a 24V Inverter to a 12V Battery? You can safely connect a 24V inverter to a 12V battery by using a pair of 12V batteries to create a 24V system or using ...



[How to Connect 24v solar panel to 12v battery?](#)

Here, we can use charge controller or inverter. If you are using single inverter battery, you can use Fusion charge controller, it is mppt charge controller which uses to ...

[How To Convert 12V To 24V For Better Efficiency](#)

You can convert 12V batteries to 24V by either wiring two (2) batteries in a series string or connecting one to a boost converter Once you ...



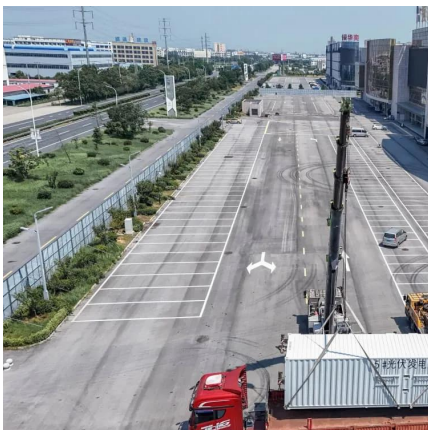
Can You Use a 24 volt inverte With a 12V Battery System?

Funny smells, blown fuses, or a flat-lined battery bank could be waiting if you rush in. Success: The short answer: you can connect a 24 volt inverter to a 12 V system only by ...



Powering a 12V inverter with 24V batteries?

Powering a 12V inverter with 24V batteries?
Does anyone know if they make something like a
24V to 12V buck converter that can handle the
amperage to run say a 2000 ...

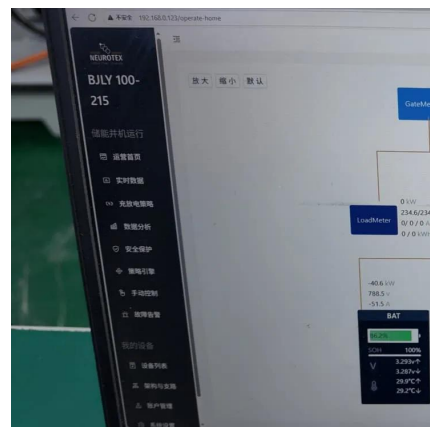


Can I use a 12v inverter with a 24v setup?

It looks like bigger panels - 160w/24v offer
simpler installation, are cheaper, and are more
suited to longer cable runs, so that's what I'm
looking at, along with an accompanying 24v
charge ...

Can I Use a 24V Inverter on a 12V Battery?

But what if you have a 24V inverter and a 12V
battery, will they work together? 24V inverters
cannot run a 12V battery because it cannot
produce enough power to run the inverter. The ...



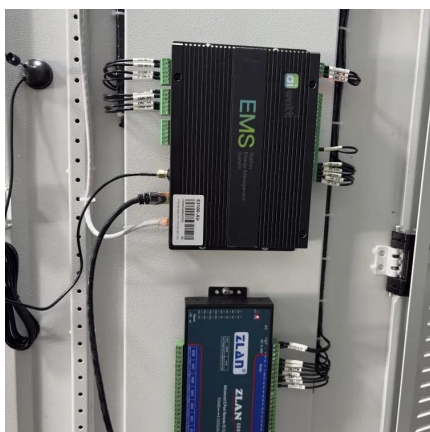


[Can I Use a 24V Battery Bank with a 12V Inverter?](#)

No, you cannot directly use a 24V battery bank with a 12V inverter. The voltage difference between the 24V battery and the 12V inverter creates compatibility issues that can ...

Connecting Multiple Batteries to an Inverter: Easy Guide

Need more battery capacity on your inverter? Let's look at how to add more batteries and how many batteries you can connect to an inverter.



Can I Run A 12V Inverter On A 24V Battery? Solutions And Best ...

No, a 12V inverter cannot operate on a 24V battery without modification. Connecting a 12V inverter to a 24V battery can cause damage to the inverter. The inverter is ...

[How to connect 24v solar panel to 12v battery?](#)

First, parallelly connect the 24v solar panel to 12v battery through an MP4 connector, followed by the output connected with the inverter. While ...



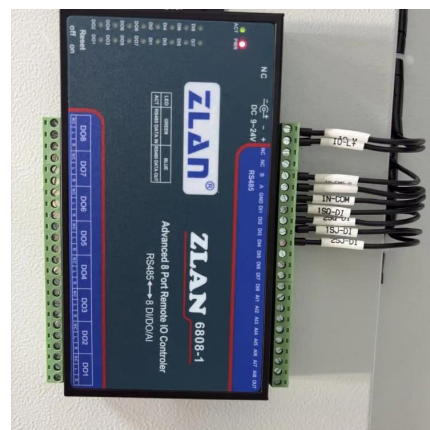
Can I Attach My Small Inverter Directly to the Battery?

For example, a 12V inverter won't work with a 24V battery bank; the excess voltage can instantly destroy the inverter's circuitry. Conversely, a 24V inverter connected to a 12V ...



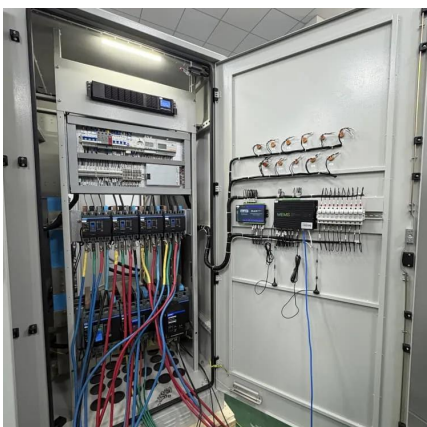
How to Convert 24v Solar Panel to 12v (Step-By-Step)

The good news is that you can use a 24v solar panel to power a 12v battery, but there are some steps in the middle that you need to know ...



Can You Use a 24 volt inverte With a 12V Battery System?

Success: The short answer: you can connect a 24 volt inverter to a 12 V system only by doubling the battery voltage (series wiring or a DC-DC step-up). Directly hooking one ...





Can I Run a 12V Inverter on a 24V Battery?

To summarize, it is not feasible to run a 12V inverter directly on a 24V battery, which can lead to inverter damage and safety hazards. However, this problem can be ...

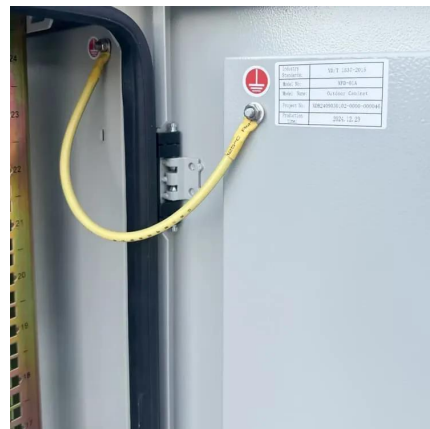


How to Connect 12V Batteries to Make 24V (with ...)

Learn how to connect multiple 12V batteries to make 24V power correctly. This guide covers configurations for 2, 3, 4, 6, and 8 batteries.

Can you run 12V system from 24V battery pack

If I run two 12V batteries in series to supply 24V to a 24V inverter, can I run a small 12V rv system (mostly LED lights) tapped off one of the two batteries that is wired in series to ...



How to connect 12v inverter to 24v two batteries system?

Looks like your charger will autodetect 12V or 24V, so you could connect the batteries in parallel and the the charger would work, then you could also ...



Can You Connect 24V Solar Panel to 12V Battery?

Yes, it is possible to connect a 24V solar panel to a 12V battery. The voltage of the solar panel will need to be reduced to charge the battery correctly.



Can I Connect a 12V Inverter to a 24V Battery Bank

Yes, if your 24V battery bank is made up of 12V batteries connected in series, you can create a 12V bank by wiring some batteries in parallel. However, this requires careful ...

Contact Us

For catalog requests, pricing, or partnerships, please visit:
<https://www.talbert.co.za>