

Can a 24v inverter be connected to a 12v one





Overview

Can I use a 24V inverter on a 12V battery?

In conclusion, using a 24V inverter on a 12V battery is not advisable due to voltage mismatch, power limitations, and safety hazards. For a successful solar energy system, it's essential to use components that are compatible with each other, ensuring optimal performance and longevity.

Is a 24V inverter better than a 12V battery bank?

When you pair a 24V inverter with a 24V battery bank, the risk of a solar fire or arc are reduced and it also minimizes energy losses. The input regulation is also better compared to a 12V system, a 4.6% drop compared to 1.05%. A 24V system also does a better job converting DC to AC.

Can a 12V solar panel use a 24V inverter?

A 12V solar panel must use with a 12V inverter and a 24V solar panel must use with a 24V inverter. On top of that a series connection is required to maintain the same voltage between the battery, inverter and the solar panel. Check out 12V, 24V and 48V inverters [here](#). To keep things simple, just remember to keep the voltage the same.

Should I upgrade my battery system to a 24V inverter?

If you have your heart set on a 24V inverter, consider upgrading your battery system to a 24V configuration. While this may involve some additional investment, it can significantly enhance the performance of your solar power setup.

How many batteries do you need for a solar inverter?

If you need 5000 watts of battery power you will need 2 x 300 12V batteries. Or you can buy a single 24V 300ah battery. This is important if space is an issue in your home. When you pair a 24V inverter with a 24V battery bank, the risk of a solar fire or arc are reduced and it also minimizes energy losses.

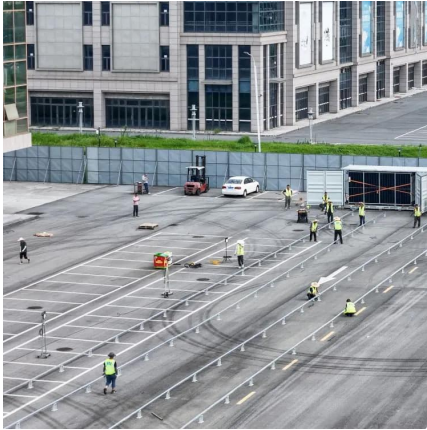


How many watts a 12V Inverter should I use?

If you need less than 1000 watts, a 12V inverter will do. If you require between 1000 to 3000 watts, it is best to use a 24V inverter. For power requirements greater than 3000 watts, 48V inverters are recommended. To put it another way, if the demand goes exceeds 140 amps you should opt for 48V.



Can a 24v inverter be connected to a 12v one

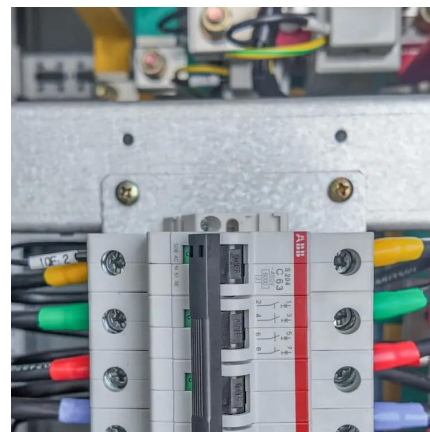


[Can I use a 12v inverter with a 24v setup?](#)

It looks like bigger panels - 160w/24v offer simpler installation, are cheaper, and are more suited to longer cable runs, so that's what I'm looking at, along with an accompanying 24v charge ...

24 Volt Battery Charger: A Complete Guide to Charging 24V ...

Discover everything you need to know about using a 24 volt battery charger, from choosing the right one to charging safely and efficiently for your power system.



[How to connect 3 12V batteries to make 24V?](#)

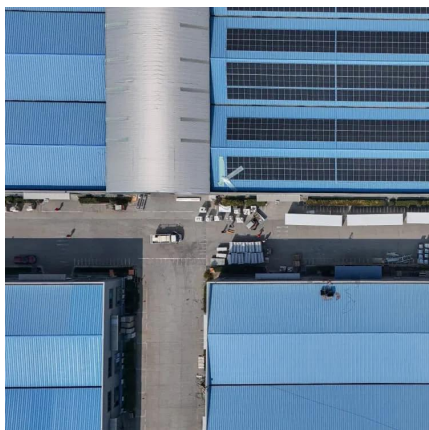
What is the principle of connecting three 12V batteries to become a 24V battery? Connecting three 12V batteries in parallel or in series can realize ...

Can You Use a 24 volt inverte With a 12V Battery System?

Pairing a 24 volt inverter directly with a lone 12 V battery is a no-go--it starves the inverter and can



wreck both battery and electronics. The safe routes are simple: wire two 12 V ...



Can I Run a 12V Inverter on a 24V Battery?

To summarize, it is not feasible to run a 12V inverter directly on a 24V battery, which can lead to inverter damage and safety hazards. However, this problem can be ...

Can charge my battery bank with 24v and use with 12v old inverter?

You can't really wire a 24v charging system with a 12v output without creating a short, it either has to be 12v or 24v, not both. Toss up the price between an additional SCC for ...



Can I Use 24V Inverter with 12V Battery

Using an inverter with a matched voltage level to your battery is essential for efficient power conversion. A 24V inverter inherently anticipates a 24V input. Using a 12V input ...



[Use 24v Solar Panel with 12v Battery \(Here's How!\)](#)

4. How Do You Charge a 12v Battery with a 24v Solar Panel? Instead of connecting the solar panel directly to the battery, you would ...



12V vs 24V Inverter: What's the difference between 12 ...

What's the Difference Between a 12 and 24 Volt Inverter? The difference between a 12V and 24V inverter is the amount of input volts it can handle. This is the ...

Basic: Can I Use a 24V Inverter in a 12v Solar Battery system

In conclusion, using a 24V inverter on a 12V battery is not advisable due to voltage mismatch, power limitations, and safety hazards. For a successful solar energy system, it's ...



How to Set Up a Reliable 24V Solar Inverter System: ...

Learn how to set up a reliable 24V solar inverter system. Connect 12-volt lithium batteries and solar panels with our step-by-step guide.



Can I Use a 24V Inverter with a 12V Battery? Compatibility and

How Can I Safely Connect a 24V Inverter to a 12V Battery? You can safely connect a 24V inverter to a 12V battery by using a pair of 12V batteries to create a 24V system or using ...



Can I Run A 12V Inverter On A 24V Battery? Solutions And Best ...

No, a 12V inverter cannot operate on a 24V battery without modification. Connecting a 12V inverter to a 24V battery can cause damage to the inverter. The inverter is ...

how to use 12V inverter on 24 volt (2 battery) system

Option 1: keep the 24v, sell the inverter and buy a 24v one. Option 2: make the entire system 12V. If you don't have more parts connected, it's as simple as connect the battery in parallel and ...



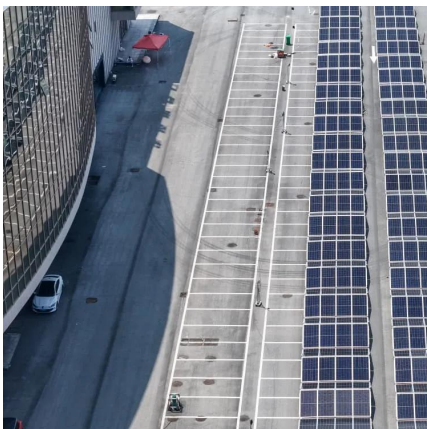


[Can I Use a 24V Inverter on a 12V Battery?](#)

24V inverters cannot run a 12V battery because it cannot produce enough power to run the inverter. The only way to do this is to connect two 12V batteries in a series, which will increase ...

12V VS 24V Inverter: What are the Differences and ...

The number of batteries you can connect to a 24V inverter depends on the amp-hour (Ah) capacity of the batteries and the inverter's power rating. For a 24V ...

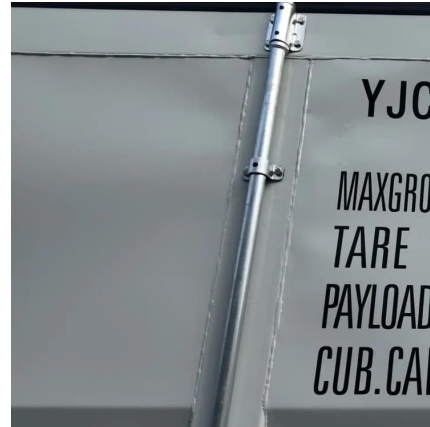


[How To Connect Batteries In Series and Parallel](#)

You CAN connect your load to ONE of the batteries, which will drain both equally. However, the preferred method for keeping the batteries equalized is connecting to the ...

[Powering a 12V inverter with 24V batteries?](#)

Hello Does anyone know if they make something like a 24V to 12V buck converter that can handle the amperage to run say a 2000 watt load max ...



Bridging a 24V inverter and a 12V battery with a 24V->12V ...

Most converters are one-way. You would need a 12V->24V converter. What size inverter? Let's say 2000W. $2000W / 12V = 166A$. Given the conversion losses you probably ...

Can I Connect a 12V Inverter to a 24V Battery Bank

Discover whether it's safe to connect a 12V inverter to a 24V battery bank and how to do it without damaging your system.



How to connect 12v inverter to 24v two batteries system?

Looks like your charger will autodetect 12V or 24V, so you could connect the batteries in parallel and the the charger would work, then you could also ...



Can I Run A 12V Inverter On A 24V Battery? Solutions And Best ...

To use a 12V inverter with a 24V battery, a DC-DC buck converter can be employed. This device reduces the 24V input down to 12V for the inverter, ensuring safe and ...

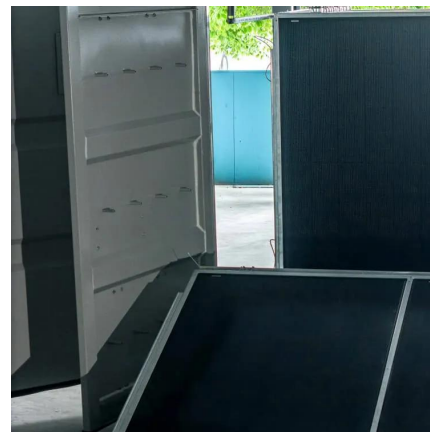


Basic: Can I Use a 24V Inverter in a 12v Solar Battery ...

In conclusion, using a 24V inverter on a 12V battery is not advisable due to voltage mismatch, power limitations, and safety hazards. For ...

Can I use a 12v inverter with a 24v setup?

The thing is, there are a lot of really cheap 12v inverters that are around 1000w, but 24v inverters all seem to come from companies that are a lot more expensive. Specifically I was looking at a ...



How do I choose between a 12V and a 24V inverter? - EDECOA

The input voltage of the inverter and the voltage of the battery should match to ensure the proper operation of the inverter. Therefore, it is not recommended to use a 24V ...



Contact Us

For catalog requests, pricing, or partnerships, please visit:
<https://www.talbert.co.za>