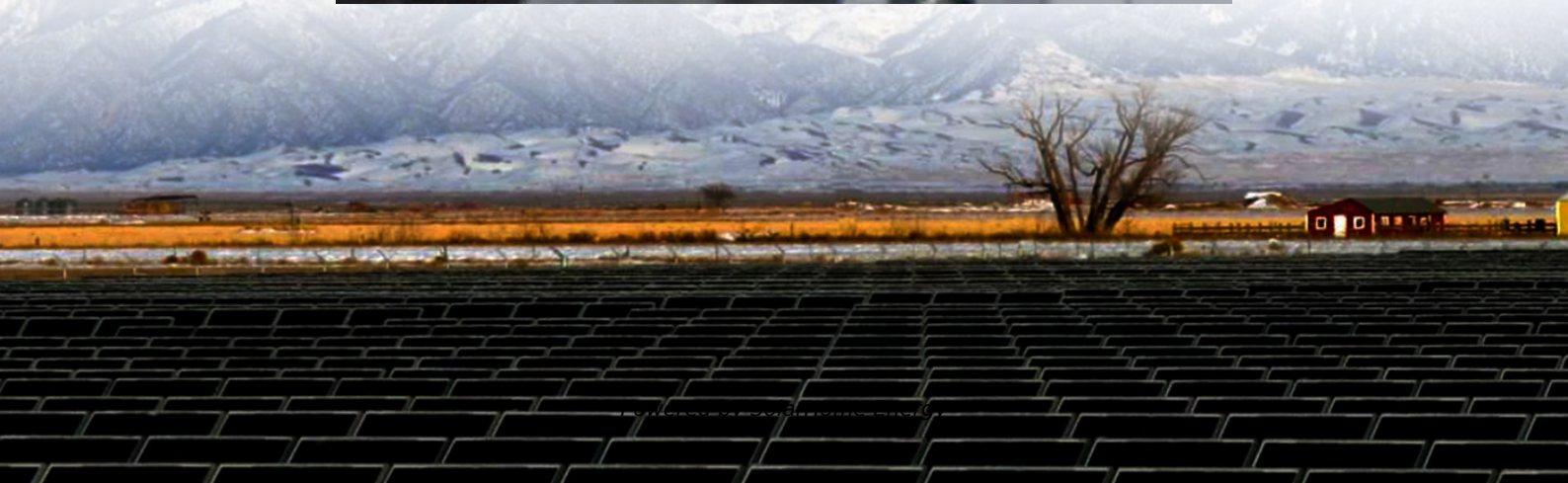
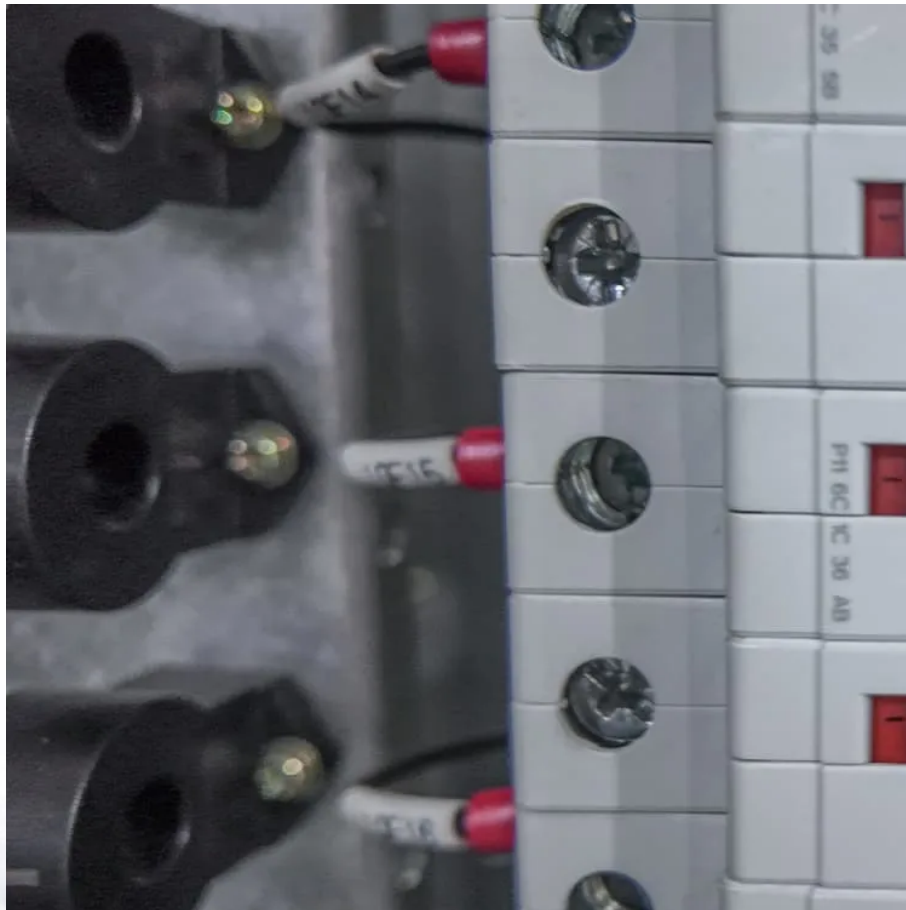


# **Can a 12v lithium iron phosphate battery be used with an inverter**





## Overview

---

Yes, you can connect an inverter to a lithium battery. Lithium batteries, particularly Lithium Iron Phosphate (LiFePO<sub>4</sub>) batteries, are well-suited for use with inverters due to their high efficiency, lightweight design, and ability to deliver consistent power. Are lithium iron phosphate batteries good for 12V?

While Lithium NMC and Lithium Polymer batteries will provide high current right up to the end of their cycle, their cell voltage is the first thing that makes them a bad choice for 12V use. A configuration of Lithium Iron Phosphate for 12V gives you 12.8V which is perfect.

Are lithium batteries good for inverters?

Lithium batteries offer much higher energy density, longer life cycles, reduced weight, and faster charging times than traditional lead-acid batteries. This makes them ideal for both small and large-scale inverter applications. Part 2. How does a lithium battery power an inverter system?

Here's how the process works:.

Which lithium ion battery is used in a stationary inverter?

There are multiple types of lithium-ion batteries, but the two most commonly used in inverters are: 1. Lithium Iron Phosphate (LiFePO<sub>4</sub>) 2. Lithium Nickel Manganese Cobalt Oxide (NMC) LiFePO<sub>4</sub> is preferred for stationary inverter setups due to its superior safety and reliability. Part 4. Key technical specifications you must know.

How do I choose a lithium battery for inverter use?

When selecting a lithium battery for inverter use, it is essential to understand the key specifications: Voltage (V): Most inverter systems use 12V, 24V, or 48V batteries. Higher voltage systems are more efficient for larger power loads. Capacity (Ah or Wh): Amp-hours or Watt-hours indicate how much energy the battery can store and deliver.



How does a lithium battery work with an inverter?

It works with inverters by delivering direct current (DC), which the inverter transforms into alternating current (AC) to power home appliances, RV electronics, or off-grid systems. Lithium batteries offer much higher energy density, longer life cycles, reduced weight, and faster charging times than traditional lead-acid batteries.

What is a 12V 100Ah lithium iron phosphate battery used for?

This 12V 100Ah Lithium Iron Phosphate battery can also be used to replace standard lead-acid batteries in the use of mobility scooters, UPS system, fire alarm systems, access control systems and medical devices. They are growing in popularity for military and aerospace applications. The Canbat CLI100-12 is a UL certified 12V 100Ah LiFePO<sub>4</sub> battery.



## Can a 12v lithium iron phosphate battery be used with an inverter

---



### How to Install and Set Up LiFePO4 Batteries for Your Inverter

It's time to upgrade to the revolutionary LiFePO4 (Lithium Iron Phosphate) batteries and enjoy a world of superior performance and safety. This comprehensive guide will walk you through the ...

### LiTime 12V 300Ah Lithium LiFePO4 Battery, Built-in 200A BMS, ...

About this item ?Grade A Automotive Cells & UL Certified 200A BMS?LiTime's 12V 300Ah lithium ion battery features Grade A Automotive LiFePO4 cells and a UL-certified ...



### Can Lithium Batteries Work With Any Type of Inverter?

For optimal performance in home energy stems, choose an inverter specifically designed for lithium battery or LiFePO4 battery systems, and always verify compatibility before ...

### Advice for converting to LiFePO4 Lithium Iron Phosphate

You have to decide size your system (battery + inverter + wiring) to what the most you would



ever use at one time. The more power (air conditioner) you want the BIGGER the ...



## Do Lithium Batteries Need a Special Inverter? , IMPROVE BATTERY

Lithium batteries, including lithium-ion batteries and lithium iron phosphate (LiFePO4) batteries, don't necessarily require a special inverter specifically designed for lithium batteries.

## 300Ah Lithium Marine Battery, Solar Battery, Caravan Battery

Meet Renogy 12V 300Ah Core Series Battery, your trusted, one-stop solution for upgrading from Lead to Lithium. Compatible with Renogy's solar panels, solar charge controllers, and ...



## r/batteries on Reddit: Can I use a marine inverter-charger with lithium

I have an older trace engineering 2.5 kW inverter charger, it was meant to be used in a 12v lead acid setup, all the voltages are programmable, bulk float, etc, depth of discharge, max charge ...





## Do LiFePO4 batteries need a specific kind of inverter?

There really isn't a good setup for that type to run a 12V inverter. 3 cells is just too low a nominal voltage, and 4 is too high. LiFePO4, tho, are almost perfect. a 4S pack has a ...



## [14 Ways to Use Your 12V Lithium Battery](#)

3 days ago· From lights and fans to fridges and power tools, a 12V lithium battery handles it all. It's great for camping, RVs, off-grid homes, solar setups, and even e-scooters.

## [Lithium Iron Phosphate \(LiFePO4 or LFP\) Battery](#)

Throughout this comprehensive guide, we've explored how lithium iron phosphate (LiFePO4) batteries deliver superior safety, exceptional lifespan (3,000-5,000 cycles), and ...



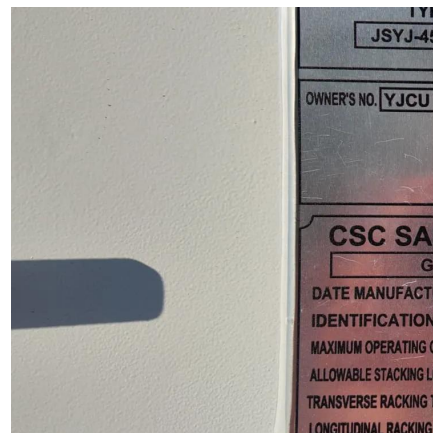
## Lithium Battery for Inverter: Pros, Specs, and Tips

Lithium batteries offer top performance and long life for inverters. This guide covers all you need to know for your power storage needs.



## Pro

Free shipping! The Renogy 12V 200Ah Pro LiFePO4 Battery makes getting access to safe, trusted power easier. It is built to withstand splashes, heat, vibrations, and other challenges.



## Do Lithium Batteries Need a Special Inverter?

Lithium batteries, including lithium-ion batteries and lithium iron phosphate (LiFePO4) batteries, don't necessarily require a special inverter specifically ...



## Amazon : Lithium Inverter

GRAPHENE Smart 12 Volt 100AH Lithium (LFP) Inverter Battery, Solar Compatible, Backup 180Ah+ Lead-Acid Battery, Long Life Upto 30 Years (4000+ Cycles), Works with Any Normal ...





## Can Lithium Batteries Work With Any Type of Inverter?

For optimal performance in home energy stems, choose an inverter specifically designed for lithium battery or LiFePO4 battery systems, and ...

## [Can I Connect Inverter to Lithium Battery?](#)

Yes, you can connect an inverter to a lithium battery. Lithium batteries, particularly Lithium Iron Phosphate (LiFePO4) batteries, are well-suited for use with inverters due to their ...



## Step-by-Step Guide: How to Safely Wire 12V LiFePO4 Batteries ...

By wiring 12V LiFePO4 batteries in series, you can achieve higher voltage for heavy-duty applications like solar inverters or electric vehicles. Here's a comprehensive guide ...

## Using Lithium Iron Phosphate Batteries for Solar Storage

Discover how Lithium Iron Phosphate batteries can revolutionize solar storage and provide reliable energy when you need it most.





## Lithium Ion

You'd be better off looking at lithium iron phosphate (LiFePo4) batteries. Cheaper, less danger. The big issue is charge profiles between lead acid and LiFePo4 don't make them a good direct ...



## How to Properly Charge My Lithium Battery? Charging Guide of ...

Unlike lead-acid batteries, lithium iron phosphate batteries do not get damaged if they are left in a partial state of charge, so you don't have to stress about getting them charged ...



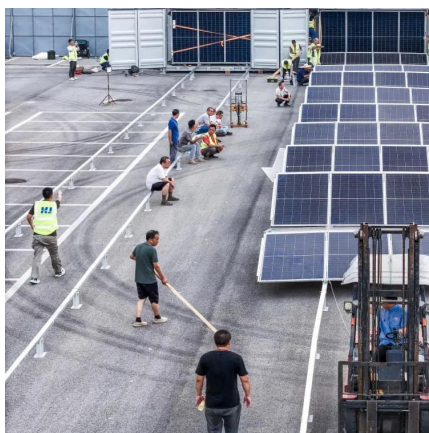
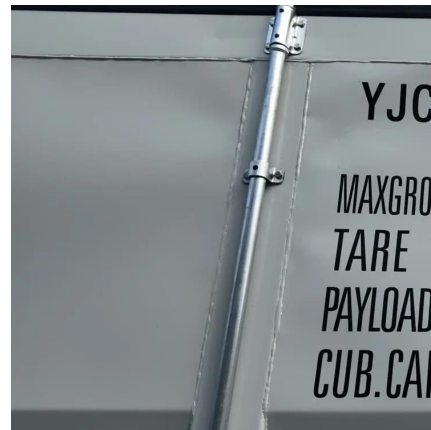
## How to Wake a Sleeping LiFePO4 Battery , Current ...

Revive dead lithium iron phosphate batteries easily! Learn how to bring a completely depleted battery back to life with simple steps.



### Best Inverter For 100Ah Battery (+ Calculations)

A 12V 100Ah battery has a 1,200 Wh (Watt-hours) energy storage capacity. It will be able to theoretically power a 100W lightbulb for a maximum ...

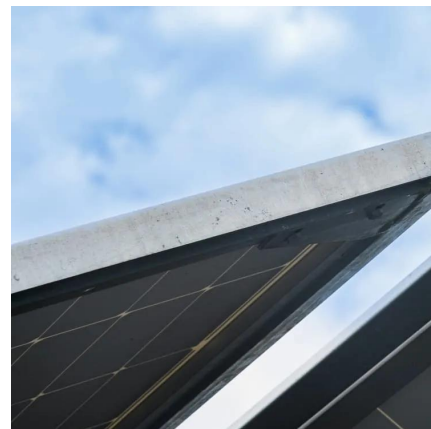


### **ECO-WORTHY 12V 100AH LiFePO4 Lithium Battery with ...**

Especially designed to ensure safe use for the low temperature charging environment in winter. Widely used for RV, cabin, off-grid or marine in cold winter [4S4P, Easy Troubleshooting]ECO-WORTHY 100AH Lithium battery support 4S4P with 1.28kWh to Max. 20.48kWh ...

### **12V 300Ah Deep Cycle Lithium Iron Phosphate Battery**

Free shipping! With the industry's highest 200W heating elements, this 12V 300Ah LiFePO4 Battery can heat up 2X faster than other heated batteries on ...



### **Litpax 100 AH With BMS Lithium Solar Battery Price in ...**

The 12V-100Ah LFP (Lithium Iron Phosphate) Home and Solar Inverter Battery with Smart BMS (Battery Management System) and Mobile App Control is a ...



### **Lithium-Iron Phosphate Battery 12 Volt 50Ah , Renogy Solar**

No more heavy lifting! Upgrade to Renogy's 12V 50Ah LiFePO4 Battery. Weighing in at a bit over 14 lbs, this battery can easily be carried and stored, and works perfectly as a portable power ...



## **Contact Us**

---

For catalog requests, pricing, or partnerships, please visit:  
<https://www.talbert.co.za>