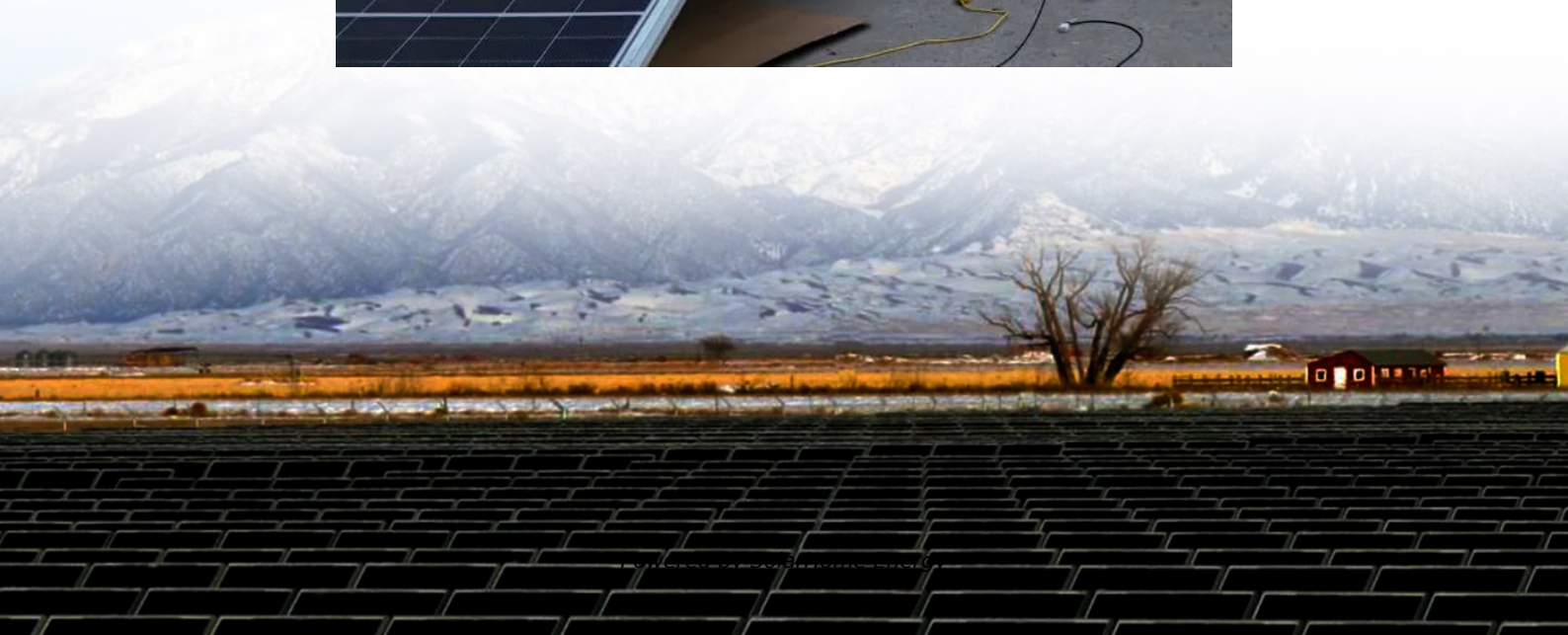


Can a 12v inverter increase power to 6kw





Overview

How much solar power can a 5kw inverter produce?

Under the Clean Energy Council rules for accredited installers, the solar panel capacity can only exceed the inverter capacity by 33%. That means for a typical 5kW inverter you can go up to a maximum of 6.6kW of solar panel output within the rules.

How much power does a 12Kw inverter use?

My 18kw inverter can handle 3X the surge current (54kw) for 20seconds. This is the most important spec to me. It also uses about 300 watts/hr idle power. But the 12kw model which is 33% smaller still uses 270 watts. I just figure one extra solar panel to power the inverter. If you have a lot of heavy loads, it's not a big deal.

How do I choose a solar inverter size?

To calculate the ideal inverter size for your solar PV system, you should consider the total wattage of your solar panels and the specific conditions of your installation site. The general rule is to ensure the inverter's maximum capacity closely matches or slightly exceeds the solar panel array's peak power output.

How efficient is a solar inverter?

As long as the input from the panels falls within the range of the window, the inverter can be considered to be operating optimally. In the graph below, the red line represents an average inverter efficiency and the green arrow represents the power output from your solar panels.

How does the size of a solar inverter affect performance?

The size of a solar inverter significantly affects the performance of a solar panel system. Here are several key ways that inverter size impacts performance: 1. Energy Conversion Efficiency.



Should a solar inverter be oversized?

However, slight over-sizing of the solar panels compared to the inverter capacity (up to 133% under certain guidelines) can sometimes yield better overall efficiency due to the variable nature of solar irradiation throughout the day. The ratio for inverter sizing often depends on specific system requirements and local regulations.



Can a 12v inverter increase power to 6kw



WESLNN 12000W 10KW 6KW Inverter Pure Sine Wave 12V...

About inverter Q1: what can I in scenarios using the inverter? A1: you can be in: car power system (at the top of your rv access panels), family off-grid system, the inverter input connected to the ...

Is it possible to make 12V to 48V boost dc-dc converter of 6kW power?

I have 12V battery that can output 500A (LiFePO4). But all 220V invertors that I found need 48V input to work with high power (6kW). Is it possible to make boost DC-DC ...



How does the size of an inverter affect its performance

Oversizing the solar panel array relative to the inverter's capacity (up to 133% is common) can increase energy production during periods of low solar irradiance but may cause ...

Big inverters vs smaller inverters

Inverter should be sized to your needs to minimize inverter overhead power. The toughest thing to figure out is what power capability for ...



How to upgrade a 12v inverter?

If you find that your current 12V inverter doesn't have enough power to run your devices, you can consider upgrading its power output. One option is to replace the inverter with a higher - ...



6KW Hybrid MPPT Solar Inverter ...

NOTE 1: 6KW Hybrid MPPT Solar Inverter SolarPolo Series is a wide voltage Hybrid inverter. Solar panel input voltage must be higher than 120V so that ...



[How to Calculate How Long an Inverter Will Last](#)

How long an inverter lasts depends on the battery and load. This simple guide explains how to calculate inverter runtime of any size.





Megarevo R6KLNA 6.0kW Split Phase Hybrid Inverter ...

The Megarevo R6KLNA 6.0kW Split Phase Hybrid Inverter is designed to use in both Grid-Tie and Off-Grid solar systems. With a 6kW rated output and 9.0kW ...



12 Volt DC Power Inverter: In-Depth Learning and ...

Discover how a 12-volt DC power inverter works, its applications, and how to choose the best one, Topbull inverters, for reliable and safe power ...

Best way to run a 12v inverter off a 24v system : r/SolarDIY

Ok, so you're saying run with 12v for now until I increase the size of my system? The Victron 100/50 can only supply 440w at 12V, that doesn't seem like enough for 4.8kwh of batteries. I ...



The Top 5 Power Inverters For Your Campervan. 12v ...

Looking for a power inverter for your campervan? In this article we'll take a look at the top 5 power inverters for converting 12v to 240v. We'll ...



Solar inverter size for 6kW system + Sizing Solar Inverter

If it is a 6kW system, then it needs to be with a 6kW inverter. However, one can also go for an inverter which is a little bigger than this, such ...



6000 watt inverter charger

The AIMS Power low frequency 6000 Watt 48-volt, split phase 120/240 Vac power inverter charger is not your average every-day power inverter. This is a top-of ...

What Size Solar Inverter Do I Need? Experts Break It Down

Picking the right solar inverter isn't rocket science, but it's not a wild guess either. Match your inverter size to your solar panel output, leave a little headroom, and don't cheap ...





[8 steps of adding battery to growatt inverter](#)

This brand of inverters has the ability to efficiently convert the DC (Direct Current) power generated by the solar panels into AC (Alternating ...

Can you add more panels to an already maxed out inverter? : r

If you're not adding a whole extra string worth, yes, you can add panels in series as long as you don't exceed your inverter's max Voc (or even max MPPT range).

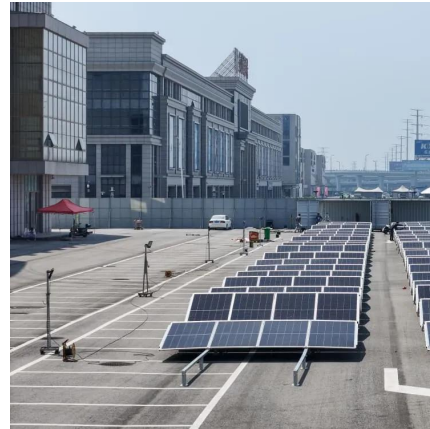


Inverters , Victron Energy

The Victron Energy inverters are high efficiency inverters. For professional use and suitable for the most diverse applications.

What Size Solar Inverter Do I Need? Experts Break It ...

Picking the right solar inverter isn't rocket science, but it's not a wild guess either. Match your inverter size to your solar panel output, leave a little ...



[9 Best Off-grid Inverters \(Complete 2025 List\)](#)

Without a utility grid connection, you'll need the best off-grid inverter to ensure a steady supply of electricity from your solar panels to your house. An off-grid inverters primary ...



Can a 6KW + 16KWh All-in-One ESS Run Heavy Appliances?

Inverter and Battery Specifications The 6KW + 16KWh All-in-One ESS, such as the TP-PA6K16LV model, boasts impressive specifications that make it a powerhouse in energy storage ...



Solar inverter size for 6kW system + Sizing Solar Inverter

If it is a 6kW system, then it needs to be with a 6kW inverter. However, one can also go for an inverter which is a little bigger than this, such as 6.5kW or 7kW, considering ...



3KW, 6KW, 8KW, and Beyond: Choosing the Right ...

Choose the perfect hybrid inverter--3KW, 6KW, 8KW, or higher--for your energy needs. Compare features, efficiency, and scalability in ...



3KW, 6KW, 8KW, and Beyond: Choosing the Right Hybrid Inverter

Choose the perfect hybrid inverter--3KW, 6KW, 8KW, or higher--for your energy needs. Compare features, efficiency, and scalability in this guide.

Big inverters vs smaller inverters

Generally, yes. Inverters have an idle power usage. A Victron 48/5000 burns 30W just by being powered on. That's 0.72kWh/day or 60Ah of ...



Solar Inverter Sizing to Improve Solar Panel Efficiency

Under the Clean Energy Council rules for accredited installers, the solar panel capacity can only exceed the inverter capacity by 33%. That ...



6kW Solar Inverter Guide 2025: Best Models, Installation & Costs

For a 6kW solar panel array, you typically need a 5-6kW inverter. Many installers use a DC-to-AC ratio of 1.2:1, meaning a 6kW inverter can handle up to 7.2kW of solar panels ...



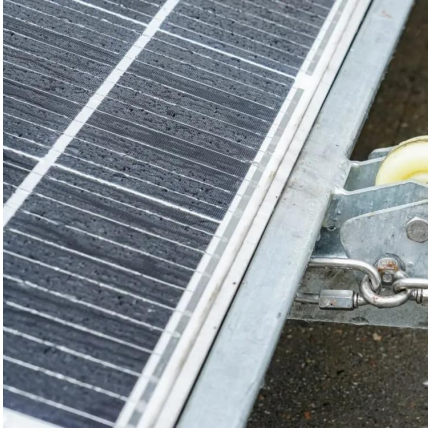
Big inverters vs smaller inverters

Inverter should be sized to your needs to minimize inverter overhead power. The toughest thing to figure out is what power capability for inverter is needed to handle your ...

Solar Inverter Sizing to Improve Solar Panel Efficiency

Under the Clean Energy Council rules for accredited installers, the solar panel capacity can only exceed the inverter capacity by 33%. That means for a typical 5kW inverter ...





10 Questions You Should Know About 6kW Inverter Solar Systems

A 6kW inverter solar system consists of solar panels and an inverter with a capacity to convert 6 kilowatts (kW) of solar energy into usable electricity. This capacity is adequate for ...

Contact Us

For catalog requests, pricing, or partnerships, please visit:
<https://www.talbert.co.za>