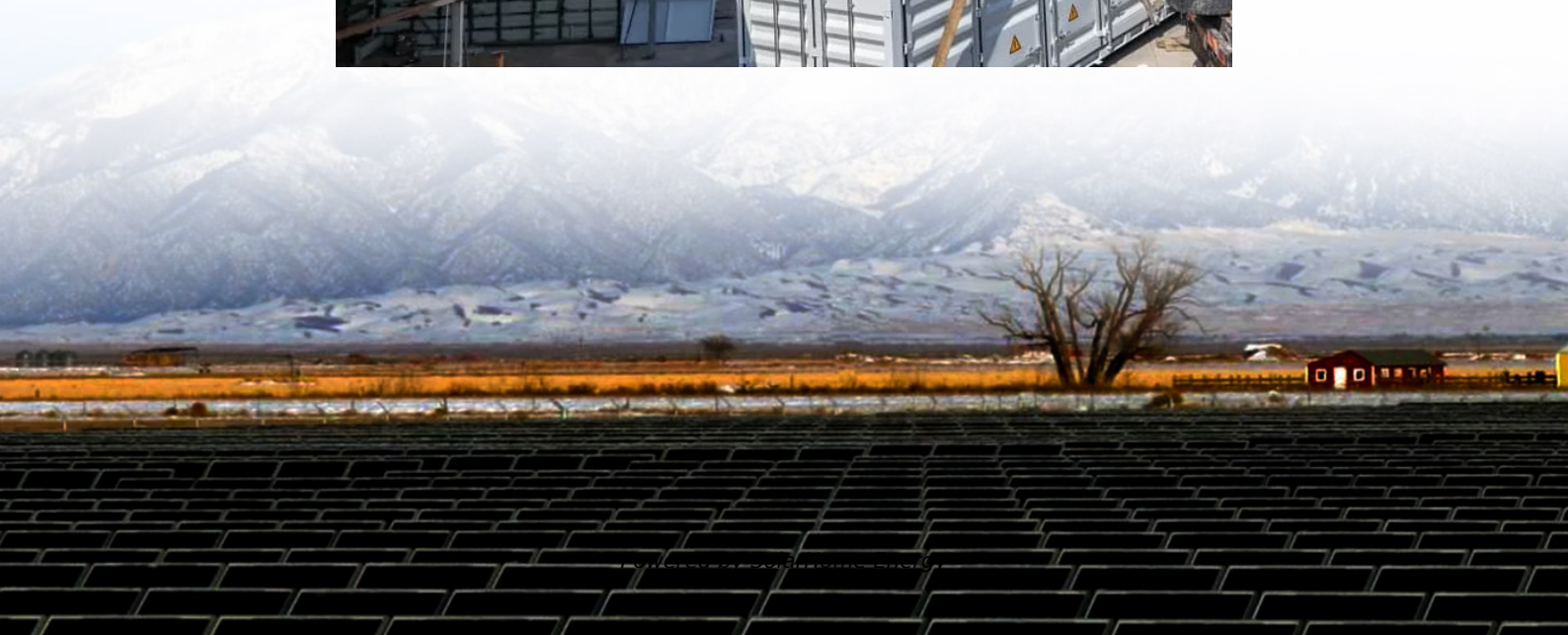


Can a 12V 7A battery drive an inverter





Overview

Can a 12V battery be used as an inverter?

If you are using a 12V battery, then the input voltage of the inverter must match the battery voltage. If the specifications of the battery and the inverter do not match, the system will not operate stably and may even damage the equipment. In addition, choose the right inverter power and battery capacity for your home or commercial needs.

Do inverters and batteries need to match?

The inverter and batteries must match in terms of voltage, capacity, and power output. If you are using a 12V battery, then the input voltage of the inverter must match the battery voltage. If the specifications of the battery and the inverter do not match, the system will not operate stably and may even damage the equipment.

What voltage does a 12V inverter use?

So if you use 2, 5, or 10, 12V batteries the voltage would remain at 12V. This is important as your inverter will be designed for a specific input voltage – usually 12V or 24V. For example, if you connect together two 12V 100Ah batteries the voltage remains at 12V but you now have 200Ah of battery capacity.

Can a small power inverter be plugged into a 12 volt outlet?

Some small power inverters are equipped with DC power cords with plugs that can be plugged into a 12 volt vehicle outlet. Some have a cord set that have battery clips identified as Positive (Red color) and Negative (Black color). Some small inverters have two cords supplied; one with a plug and one with battery clips. 12 Volt Outlets.

How many batteries can I connect to my inverter?

There is no set limit to how many batteries you can connect to your inverter.



But you must understand how you connect your batteries together affects what you can and can't do! For example, connecting your batteries in series will be different to connecting in parallel.

Can you connect two 12V 100Ah batteries together?

If you connect together two 12V 100Ah batteries you end up with a 24V 100Ah capacity battery bank. You must be very careful doing this as an inverter will have a specific input voltage such as 12V or 24V. Let's say you have a 12V inverter and try to connect two 12V batteries in series.



Can a 12V 7A battery drive an inverter



How Inverters Work with Batteries: A Beginner's Complete Guide ...

An inverter changes DC power from a 12 Volt deep-cycle battery into AC power. The battery discharges while the inverter provides power. You can recharge the battery using ...

How Long Will 12V Battery Last With Inverter? 3 Batteries Tested ...

Since we couldn't find a realistic test of common batteries with common power consumption, RVgoer decided to test the 3 most common 12V batteries. We have set up a 1000w inverter ...



Can I Attach My Small Inverter Directly to the Battery?

Yes, you can attach a small inverter directly to a battery, but doing it safely requires understanding voltage compatibility, wire sizing, and overload risks. Many DIYers assume it's ...

[Can I connect an inverter directly to a battery?](#)

Yes, you can connect an inverter directly to a battery bank. Once the batteries are connected



correctly, simply route the positive and negative wires from the inverter to the ...



How to Safely Connect a Battery to an Inverter: A Step-by-Step ...

Learn how to safely connect your batteries to your inverter with our guide. Avoid common wiring mistakes to optimize performance and extend system life.

Can a 12V 7Ah UPS Inverter (220v) run with a 14.8V 40Ah Battery

Can a 12V 7Ah UPS Inverter (220v) run with a 14.8V 40Ah Battery ? #AamisTechsool
#UPSInverter #12volt7ah more



[How long will a 12v battery last with inverter](#)

How long will a 12v battery last with an inverter?
Here is a completed explication on the factors that affect the run time of 12v battery and ...



How to Connect a Large or Small Inverter to a Battery

This blog answers questions about which inverters can be powered by 12V DC accessory outlets (cigarette lighter sockets) and which require wiring directly to a battery.



How Inverters Work with Batteries: A Beginner's ...

First, the battery must be charged adequately to supply sufficient energy. Next, the inverter's capacity must match the power demands of the ...

Can I Use A Car Battery For An Inverter? Connecting For Backup ...

This setup offers mobility. However, pay attention to charging time and the battery's capacity to prevent damage and maintain performance. When connecting a car battery to an ...



How to Connect a Large or Small Inverter to a Battery

This blog answers questions about which inverters can be powered by 12V DC accessory outlets (cigarette lighter sockets) and which ...



Calculate Battery Size For Any Size Inverter (Using ...

Instructions! Inverter runtime: is the total number of hours you would need to run your load on an inverter Inverter input Volts (V): Are you ...



Can You Charge 12V 7Ah Battery? (12V 7Ah Battery ...

A 12V 7Ah battery has seven cells and is able to provide 12 volts of power. And, yes you can charge 12V 7Ah battery just following some ...

Understanding Battery Capacity and Inverter Compatibility

Inverter Efficiency: Lithium batteries generally work well with modern inverters, but checking the inverter's efficiency rating is advisable. Efficiency impacts the actual power ...





Can a 12V 7Ah UPS Inverter (220v) run with a 12.8V ...

Can a 12V 7Ah UPS Inverter (220v) run with a 12.8V 8Ah Battery? In this video I will do a test to find out if a 600va computer UPS inverter can handle 14.8 v

Charging Battery While Connected To Inverter (Explained!)

Can I charge a battery while it's connected to an inverter? In short, the answer is Yes, you can charge a battery while using an inverter. but make sure that the load should be ...



Connecting Multiple Batteries to an Inverter: Easy Guide

Let's say you have a 12V inverter and try to connect two 12V batteries in series. You would end up inputting 24V to the inverter and cause an overload.

[How Long Will A 12V Battery Last With an Inverter](#)

How long will a 12V battery last with an inverter during a power outage? The duration varies depending on factors such as battery capacity, ...



[Can I Use a 12V 7AH Battery with an Inverter?](#)

Yes, you can use a 12V 7Ah battery with an inverter, provided that the inverter is compatible with a 12V input. This configuration is suitable for low-power applications, such as ...



[Lithium \(LiFePO4\) Battery Runtime Calculator](#)

Calculating battery runtime on a load can be confusing for some folks. We created a lithium battery runtime/life calculator for your ease.



How Long Will A 12v Battery Last With An Inverter? Calculator

How many hours can a 12 volt battery run an inverter? As a simple rule, to calculate how long a 12v deep-cycle battery will last with an inverter multiply battery amp-hours (Ah) by ...



batteries

That the battery can support this short-term spike in current without damage while the inverter starts up. That the terminal voltage will not fall below the under-voltage cutout for ...

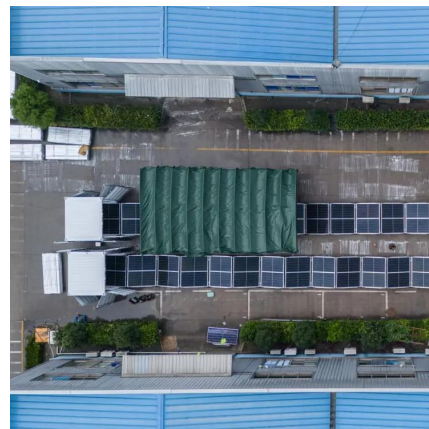


How to Safely Connect a Battery to an Inverter: A ...

Learn how to safely connect your batteries to your inverter with our guide. Avoid common wiring mistakes to optimize performance and extend ...

batteries

Inverter start current may be too high to start. That the battery can support this short-term spike in current without damage while the inverter starts up. That the terminal ...



What Will An Inverter Run & For How Long? (With ...

I saw on many forums that most people are confused about what they can run on their 1000,1500,2000,3000, & 5000-watt inverter and how long ...



Calculate Battery Size For Any Size Inverter (Using Our Calculator)

To recharge your battery from time to time you would need the right size solar panel to do the job! Read the below article to find out the suitable solar panel size for your battery bank



[How Much Power Can a 12V Battery Give? Full ...](#)

A 12V battery can give a lot of power. It all depends on how it is used. If you are using it to run a small appliance, then it will not give as much ...

How Long Will a 12V Battery Last with an Inverter?

Discover how long a 12V battery lasts with an inverter, factors affecting runtime, and tips to maximize battery efficiency.





Can A Car Battery Be Used For An Inverter? Backup Power ...

Yes, a car battery can power an inverter. This lets you run electronic devices like chargers and laptops. Make sure the battery's voltage matches the inverter's needs. Also, ...

Contact Us

For catalog requests, pricing, or partnerships, please visit:
<https://www.talbert.co.za>