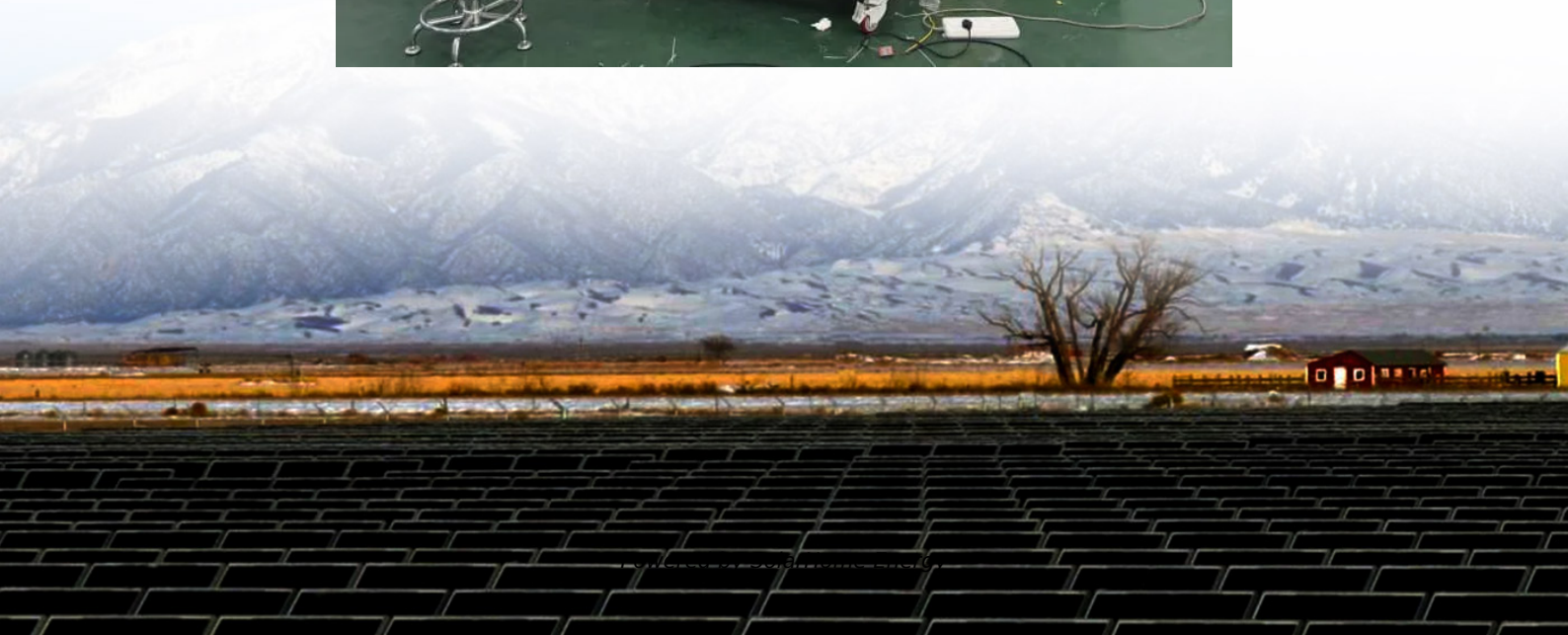


# Can 48v 12ah be used with an inverter





## Overview

---

A 48V battery can be used on a 12V inverter, but it is not recommended. The reason for this is because the voltage of the battery will be too high for the inverter, which could damage the inverter or cause it to malfunction. Do I need a 12V or 48V inverter?

Simply put, if you have a 12V system, you need a 12V inverter; a 48V system requires a 48V inverter. Standard Pure Sine Wave inverters simply change DC power to AC power. Inverter Chargers handle this function plus allow you to charge your batteries off shore power or a generator. Renogy's 3500W Solar Inverter Charger is designed for a 48V system.

Can a 48 volt solar panel be used with a 12V inverter?

Nowadays, big houses, especially off-grid, tend to use 48 volt solar panels. Keep in mind that your inverter has to be compatible with the voltage of this system to be used. A 48V solar panel can be used with a 12V system if you choose the right equipment for it — a controller and an inverter.

What voltage should a 12V inverter run on?

The input voltage of the inverter should match the battery voltage. (For example 12v battery for 12v inverter, 24v battery for 24v inverter and 48v battery for 48v inverter Summary What Will An Inverter Run & For How Long?

.

Is a 48V Solar System better than a 12v system?

With a 48V system, the current is one-fourth that of a 12V system, which significantly reduces energy loss. This means you'll get more out of your solar panels and batteries, making your system more efficient overall. The voltage drop in your system will be reduced. The conversion from your solar panels to the battery is more efficient.

Can a 48 volt inverter run a battery?



When you use a 48-Volts inverter, you can use regular and more flexible connectors to connect the inverter to the battery bank. This is so because the thinner the wire, the higher the resistance. And if your DC voltage is lower, you will pass more current through the wires, and they can get very hot, and you lose a lot of battery power.

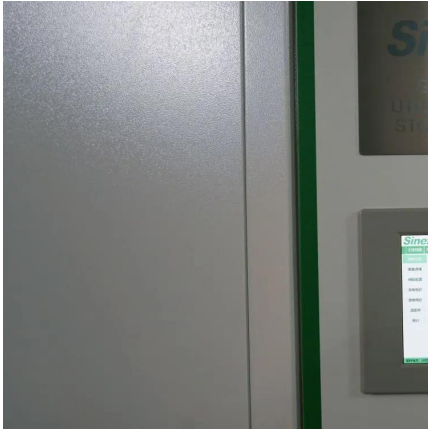
Should I use a 24 volt or 48 volt inverter?

I suggest you use A 24-volt inverter or 36-volt inverter or 48-volt inverter when you need to power appliances over 3000 Watts. You may decide to use them even for appliances that are 2000Watts. When you use a 48-Volts inverter, you can use regular and more flexible connectors to connect the inverter to the battery bank.



## Can 48v 12ah be used with an inverter

---



### Calculate Battery Size For Any Size Inverter (Using Our Calculator)

So I have made it easy for you, use the calculator below to calculate the battery size for 200 watt, 300 watt, 500 watt, 1000 watt, 2000 watt, 3000 watt, 5000-watt inverter

### [How Many Batteries Do I Need for a 48V Inverter?](#)

How Many Batteries Are Needed for a 48V Inverter? The number of batteries required for a 48V inverter largely depends on the inverter's power output and the desired ...



### 12V load on a 48V system

For the last year, as an experiment, I wired the pump direct to two of the 6V batteries within the 48V configuration, thus pulling 12V. It's been working perfectly, perhaps because of the low ...

### Can I Use a 48V Battery on a 12V Inverter? How Can!

There isn't a converter out there cheaper than your car that can handle what a 48v rackmount





can put out. Get (or build) a nice sized 12v based system and call it a day!

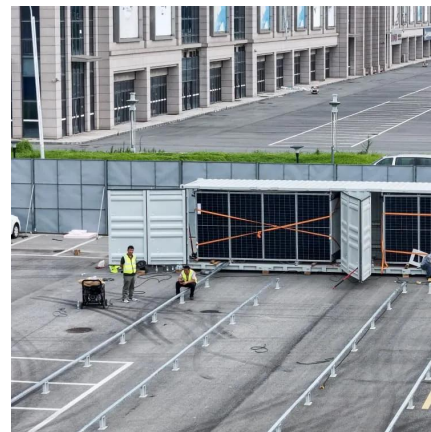


### [How to run 12 volt on 48 volt system?](#)

There isn't a converter out there cheaper than your car that can handle what a 48v rackmount can put out. Get (or build) a nice sized 12v based system and call it a day!

## **48V Inverter: The Ultimate Guide to Efficient and Scalable Power**

Unlock efficient power solutions with a 48V inverter--perfect for solar, off-grid, and backup systems. Learn how to choose the best one for your needs now!



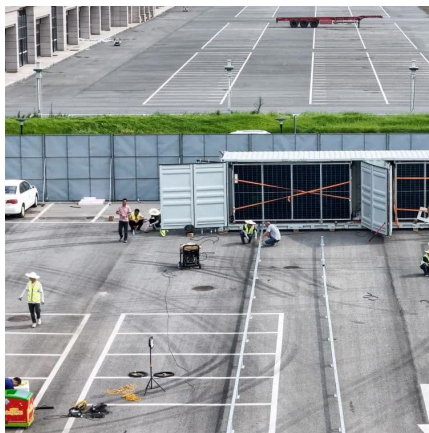
## **What Size Inverter Can I Run Off a 100Ah Battery? A ...**

This capacity influences how long an inverter can run appliances before needing a recharge. However, battery capacity alone doesn't dictate inverter size. The inverter converts ...



## Using a 52v unit pack power battery on 48 volt hub motor.

Using a 52v battery on a 48v configuration is possible however here are the effects with limitations. If the display unit is only permitted to set the voltage to maximize of 48v then the 52v battery ...



## Complete Guide to Wiring Batteries in Series - PowMr

3 days ago · Wiring batteries in series is a common method used in solar power systems, RVs, golf carts, and other DC setups. 12V batteries are the most popular, offering flexibility for ...

## Understanding Battery Capacity and Inverter Compatibility

Inverter Efficiency: Lithium batteries generally work well with modern inverters, but checking the inverter's efficiency rating is advisable. Efficiency impacts the actual power ...



## [Can You Mix Batteries with Different Amp-Hour ...](#)

Mixing batteries with different amp-hour (Ah) ratings in parallel can be done, but it comes with significant risks and considerations that must be ...



### 5 Reasons Why 48V is better than a 12V Battery

With a 48V system, the current is one-fourth that of a 12V system, which significantly reduces energy loss. This means you'll get more out of your ...



### **eBike lithium batteries can hold an insane amount of ...**

eBike lithium batteries can hold an insane amount of power. Has anyone thought about using them for emergency backup power? They should easily be able to ...

### **What size inverter do you need for a 100ah battery?**

What size inverter for a 100Ah battery? For appliances that use a relatively low amount of power, such as laptops, lights, TVs, and small fridges, ...





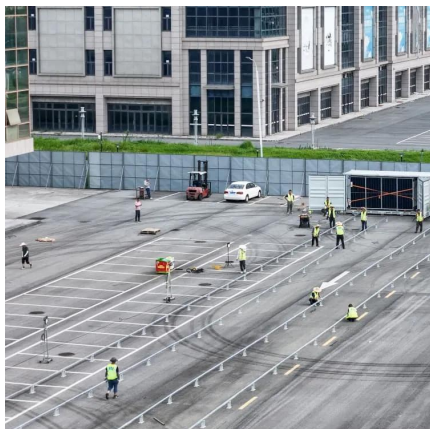


## Can I Use a 24V Inverter with a 12V Battery? Compatibility and

Using a 24V inverter with a 12V battery is not recommended. This voltage mismatch can create power limitations and pose safety hazards. For an effective solar energy system, ...

## When to Use a 24V or 48V Battery System Instead of a 12V System

When to Use a 24V or 48V Battery System Instead of a 12V System In this article, we go over some key facts and give suggestions on what battery voltage you should build your power ...



## [5 Reasons Why 48V is better than a 12V Battery](#)

With a 48V system, the current is one-fourth that of a 12V system, which significantly reduces energy loss. This means you'll get more out of your solar panels and ...

## What Size Inverter To Charge E-Bike Battery? [With ...

What Size Inverter To Charge E-Bike Battery? Larger battery needs a larger inverter. For a 36V 14A Battery you would need a maximum of 500W inverter. ...



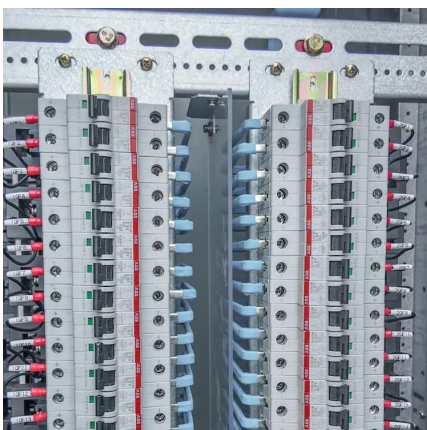


### **Can I Use a 48V Battery on a 12V Inverter? How Can!**

Yes, a 48V battery can be used on a 12V inverter. But, the voltage of the battery will be too high for the inverter, which could damage the inverter or cause it to malfunction.

### **Can I use 48v inverter with 12v lead acid battery setup?**

No, you cannot directly use a 48v inverter with a 12v lead acid battery setup--here's why. Many DIY energy enthusiasts assume inverters are universally compatible, ...



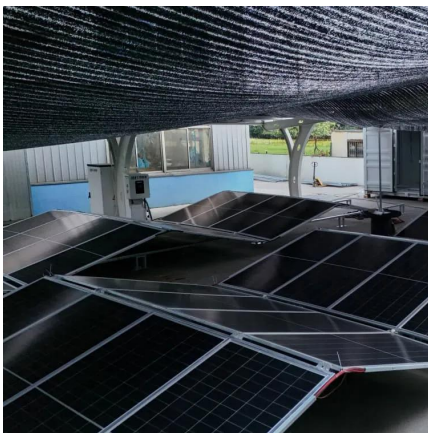
### **Can You Use a 12V Battery with a 48V Inverter?**

Using a 12V battery with a 48V inverter is not advisable as it can lead to equipment damage and safety hazards. Connecting a lower voltage battery to a higher voltage inverter ...



## 48 volt battery to 12 volt system

To answer your original question, you can either use a 48 volt - 12 volt converter between the 48 volt batteries and the 12 volt loads or keep your existing converter and house ...



## Can I Attach My Small Inverter Directly to the Battery?

Yes, you can attach a small inverter directly to a battery, but doing it safely requires understanding voltage compatibility, wire sizing, and overload risks. Many DIYers assume it's ...

## How to Determine What Size Inverter You Can Run Off a 100Ah ...

Determining the appropriate size of an inverter that can be run off a 100Ah battery involves understanding both the power output of the inverter and the energy capacity of the battery. A ...



## Can the Inverter 48v 220v 6000w be used in a school?

6 hours ago · Other Related Inverters If the 48v 220v 6000w inverter does not fully meet the school's requirements, we also offer other inverters that may be suitable. For example, the ...



## Contact Us

---

For catalog requests, pricing, or partnerships, please visit:  
<https://www.talbert.co.za>