

Burundi two lithium battery packs connected in parallel





Overview

What happens if you connect two lithium batteries in parallel?

By connecting two or more lithium batteries with the same voltage in parallel, the resulting battery pack retains the same nominal voltage but boasts a higher Ah capacity. For example, connecting two 12V 10Ah batteries in parallel method creates a 12V 20Ah battery.

How to balance lithium batteries in parallel?

Balancing lithium batteries in parallel involves measuring each battery's voltage before connection, ensuring they're within an acceptable range of each other, and then connecting all positive and negative terminals together. What Does It Mean For Lithium Batteries To Be Balanced?

.

What is a parallel lithium battery pack?

According to the parallel principle, the current of the main circuit is equal to the sum of the currents of the parallel branches. Therefore, a parallel lithium battery pack with “n” parallel batteries achieves the same charging efficiency as a single battery, with the charging current being the sum of the individual battery currents.

Can you mix different capacity lithium batteries?

Yes, you can mix different capacity lithium batteries, whether a normal 12V 100Ah battery or a Lithium server rack battery. You can combine different capacity batteries in parallel. You cannot combine different capacity batteries in series. There are a few points you need to consider when wiring in parallel. Let's explore these three points.

What is balancing lithium battery packs?

Balancing lithium battery packs, like individual cells, involves ensuring that all



batteries within a system maintain the same state of charge. This process is essential when multiple battery packs are used together in series or parallel configurations.

How do you maintain a parallel lithium battery?

To maintain parallel lithium batteries effectively: Regularly Check Voltage Levels: Ensure all batteries are at similar voltage levels before connecting. Balance Charging: Use a charger that balances charge among all connected batteries. Inspect Connections: Regularly check connections for corrosion or damage to prevent failures.



Burundi two lithium battery packs connected in parallel

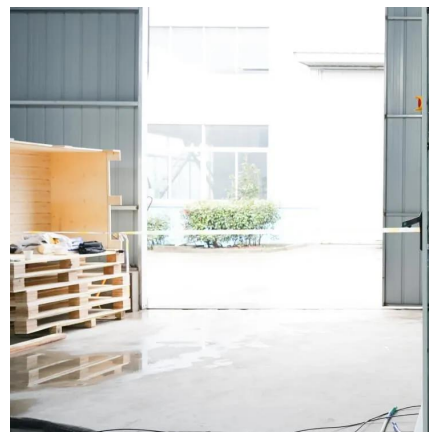


I have two lithium battery packs with separate BMS, Can I ...

It may be successful with an old and new pack but I personally would only join them if the cells had lived similar lives together. Otherwise one pack will just be dumping energy into ...

[How to Put 2 Battery Packs Together?](#)

In this comprehensive guide, I'll explain step-by-step how to properly connect two battery packs in series or parallel to create a safe, higher-performance battery bank for your ...



[How to Wire Batteries in Parallel or Series](#)

Charge only at room temperature. Two Batteries in Parallel can use just one Charger Batteries connected in series strings can also be recharged ...

[How to Connect Lithium Batteries in Parallel?](#)

When connecting lithium batteries in parallel, pay attention to battery consistency and avoid



mixing batteries of different brands, capacities, or new or old batteries. When lithium ...



I have two lithium battery packs with separate BMS, Can I connect ...

It may be successful with an old and new pack but I personally would only join them if the cells had lived similar lives together. Otherwise one pack will just be dumping energy into ...

[How to Balance Lithium Batteries in Parallel](#)

Balancing lithium batteries in parallel involves measuring each battery's voltage before connection, ensuring they're within an acceptable range of each other, and then ...



2 lithium-ion batteries with independent BMS' in parallel : r

I'm considering connecting two lithium batteries with independent BMS' in parallel, they are new and the same model. The setup is for an electric wheelchair, which normally uses one battery ...



[How to Balance Lithium Batteries in Parallel](#)

Balancing lithium batteries in parallel involves measuring each battery's voltage before connection, ensuring they're within an acceptable ...

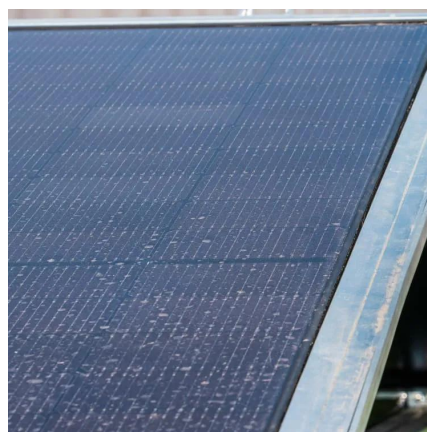


[Can You Mix Different Capacity Lithium Batteries?](#)

In this comprehensive guide, I'll explain step-by-step how to properly connect two battery packs in series or parallel to create a safe, higher-performance battery bank for your ...

[Lithium Series, Parallel and Series and Parallel](#)

Connecting multiple lithium batteries into a string of batteries allows us to build a battery bank with the potential to operate at an increased voltage, or with increased capacity and runtime, or both.



Charging LiFePO4 Batteries In Parallel And Series Guide

Like other types of battery cells, LiFePO4 (Lithium Iron Phosphate) cells are often connected in parallel and series configurations to meet specific ...



Batteries in Series vs Parallel: Which is Better?

Do you know the difference between batteries in series vs parallel? Find out how to connect batteries in series or parallel & discover which one's best for you!

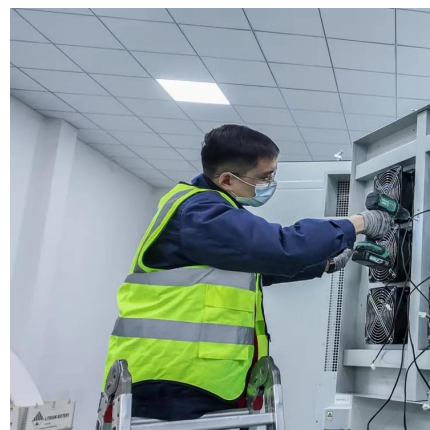


Connecting two lithium batteries in parallel

Wiring batteries in parallel is the same process as wiring cells in parallel. All you need to do is connect positive to positive and negative to negative. When connecting batteries in ...

How to Effectively Connect Batteries in Series and Parallel?

Connecting batteries in series or parallel affects voltage, capacity, and overall system performance. Understanding the proper methods and safety precautions ensures ...



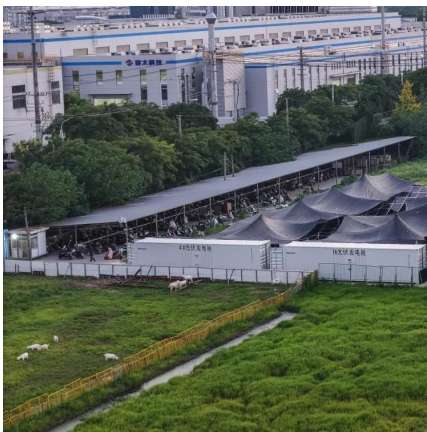


[Can You Use Two Lithium Batteries in Parallel?](#)

Yes, you can connect two lithium batteries in parallel to increase the overall capacity and current output of your battery system. However, it is crucial to ensure that the ...

How to Charge Two Batteries in Parallel: A Comprehensive Guide

Learn how to charge two batteries in parallel safely and effectively. Follow these steps for optimal performance and battery longevity.



How to Balance Lithium Batteries with Parallel BMS?

A parallel BMS regulates the current flow between 2 or multiple batteries connected in parallel, learn how it works and how to connect it.

[Charging Lithium Batteries in Parallel: A](#)

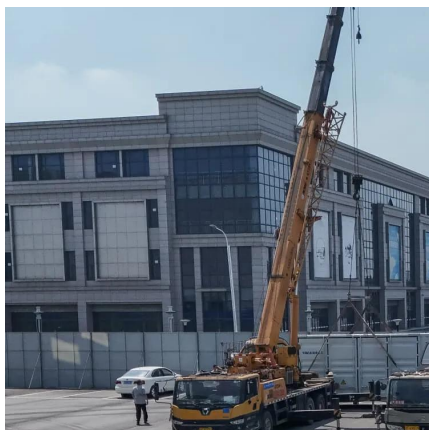
...

Lithium batteries have become a popular choice for many electronic devices and electric vehicles due to their lightweight, high energy ...



What Should Be Noted When Connecting Two Battery Packs In Parallel

This video focuses on the key precautions for connecting two lithium battery packs in parallel, especially how to ensure consistent charging and discharging currents.



2 identical batteries in parallel, but unequal discharge?

By 2 separate batteries, you mean Banks (4s 3.2v 280ah = 12v bank) just to get you right, you have two 12v banks connected in parallel aim of getting 12v 560ah? if so, then ...



What Should Be Noted When Connecting Two Battery Packs In ...

This video focuses on the key precautions for connecting two lithium battery packs in parallel, especially how to ensure consistent charging and discharging currents.





[How to Charge Two Batteries in Parallel: A...](#)

Learn how to charge two batteries in parallel safely and effectively. Follow these steps for optimal performance and battery longevity.

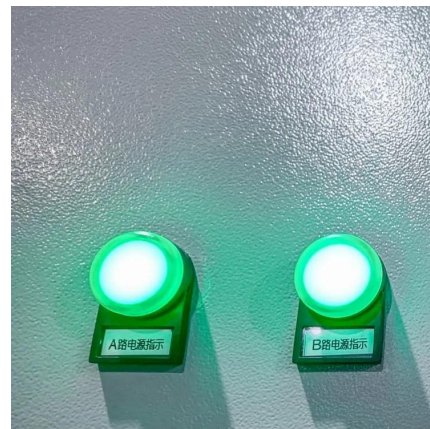


[How to Charge Batteries in Parallel? Is it safe?](#)

For instance, charging four 2S 2000mAh LiPos in parallel is equivalent to charging a single 2S 2000mAh battery. Since the individual cells ...

Can You Safely Connect Two Lithium Batteries in Parallel?

Yes, you can connect two lithium batteries in parallel to increase capacity while maintaining voltage. Ensure both batteries have identical voltage, capacity, and state of charge to prevent ...



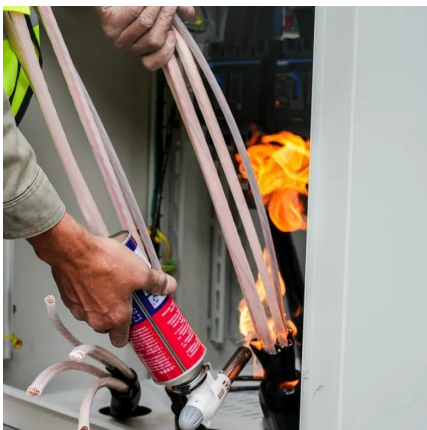
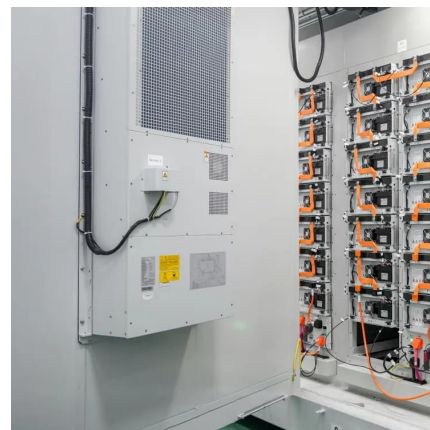
[Can You Mix Different Capacity Lithium Batteries?](#)

There are a few points you need to consider when wiring in parallel. Let's explore these three points. At the end of the article, you will find a diagram on how to wire these. First ...



How to Charge Two Batteries in Parallel: Step-by-Step

In this article, we'll guide you on charging two batteries in parallel, explain key considerations and safety tips when batteries in parallel charging.



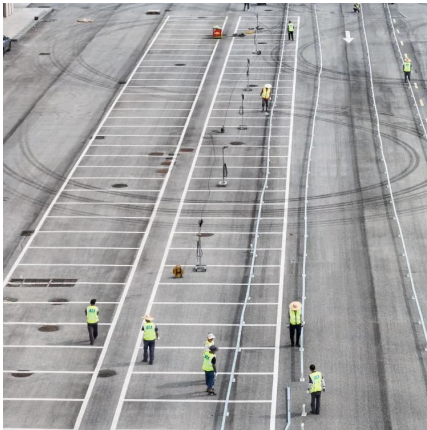
Combining 2 batterie packs with sep. BMS in parallel

So if i want to run maximum 50 amps out of these i would need to put 2 of these 30 amp shotky diodes in parallel ? So the wiring you suggested is additional to the normal parallel ...

Connect Batteries in Series and Parallel: What's the Best Way for ...

Are you frustrated trying to figure out how to boost your battery system's power? I get it--choosing between series and parallel can feel overwhelming, especially when ...





[BU-302: Series and Parallel Battery Configurations](#)

Parallel connection attains higher capacity by adding up the total ampere-hour (Ah). Some packs may consist of a combination of series and parallel connections. Laptop batteries commonly ...

Contact Us

For catalog requests, pricing, or partnerships, please visit:
<https://www.talbert.co.za>