

Because 5g base stations consume power





Overview

The 5G NR standard has been designed based on the knowledge of the typical traffic activity in radio networks as well as the need to support sleep states in radio network equipment. By putting the base st.

Are 5G base stations causing more energy consumption?

However, Li says 5G base stations are carrying five times the traffic as when equipped with only 4G, pushing up power consumption. The carrier is seeking subsidies from the Chinese government to help with the increased energy usage.

How much power does a 5G station use?

The power consumption of a single 5G station is 2.5 to 3.5 times higher than that of a single 4G station. The main factor behind this increase in 5G power consumption is the high power usage of the active antenna unit (AAU). Under a full workload, a single station uses nearly 3700W.

Why does 5G use more power than 4G?

The data here all comes from operators on the front lines, and we can draw the following valuable conclusions: The power consumption of a single 5G station is 2.5 to 3.5 times higher than that of a single 4G station. The main factor behind this increase in 5G power consumption is the high power usage of the active antenna unit (AAU).

Does China Mobile have a 5G base station?

China Mobile has tried using lower cost deployments of MIMO antennas, specifically 32T32R and sometimes 8T8R rather than 64T64R, according to MTN. However, Li says 5G base stations are carrying five times the traffic as when equipped with only 4G, pushing up power consumption.

What is a 5G base station?

A 5G base station is mainly composed of the baseband unit (BBU) and the AAU — in 4G terms, the AAU is the remote radio unit (RRU) plus antenna. The role



of the BBU is to handle baseband digital signal processing, while the AAU converts the baseband digital signal into an analog signal, and then modulates it into a high-frequency radio signal.

How much power will a 5G base station use in 2025?

The Small Cell Forum predicts the installed base of small cells to reach 70.2 million in 2025 and the total installed base of 5G or multimode small cells in 2025 to be 13.1 million. "A 5G base station is generally expected to consume roughly three times as much power as a 4G base station.



Because 5g base stations consume power



Power consumption analysis of access network in 5G mobile ...

The architectural differences of these networks are highlighted and power consumption analytical models that characterize the energy consumption of radio resource ...

5G base stations use a lot more energy than 4G base stations: MTN

And this is expected to rise with the shift to 5G. A typical 5G base station consumes up to twice or more the power of a 4G base station, writes MTN Consulting Chief Analyst Matt ...



Energy Consumption of 5G, Wireless Systems and ...

Here we develop a large-scale data-driven framework to quantitatively assess the carbon emissions of 5G mobile networks in China, where over 60% of the ...

How much power does 5G consume?

One 5G base station is estimated to consume about as much power as 73 households (6), and



3x as much as the previous generation of base stations ...

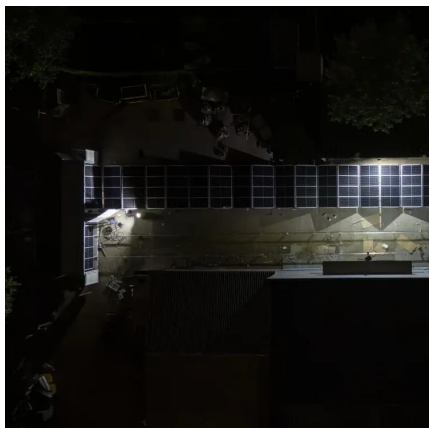


Optimal configuration of 5G base station energy storage ...

The high-energy consumption and high construction density of 5G base stations have greatly increased the demand for backup energy storage batteries. To maximize overall ...

Energy Consumption of 5G, Wireless Systems and the Digital ...

Here we develop a large-scale data-driven framework to quantitatively assess the carbon emissions of 5G mobile networks in China, where over 60% of the global 5G base stations are ...



How Much Power Does a 5G Base Station Consume? - Smart Solar

The rise of 5G technology brings faster speeds and lower latency, but it also raises questions about its energy consumption. As 5G networks are rolled out across the globe, it is important ...



What is a 5G Base Station?

Discover how 5G base stations work, their benefits, and innovations by Mobix Labs and TalkingHeads Wireless.



5G Base Stations: The Energy Consumption Challenge

Amongst these challenges, the most notable one is the energy consumption of a 5G base station due to the implementation of the massive MIMO technology and the level of network ...

Energy-efficient 5G for a greener future

However, the total power consumption of the 5G base station is about four times that of the 4G. Considering the high deployment density of 5G base stations, the overall power ...



Front Line Data Study about 5G Power Consumption

The power consumption of a single 5G station is 2.5 to 3.5 times higher than that of a single 4G station. The main factor behind this increase in 5G power consumption is the high power ...



5G Thermal Management Strategies: Keeping ...

The introduction of fifth-generation (5G) networks has made a change in the telecommunications industry by providing great data speeds, ...



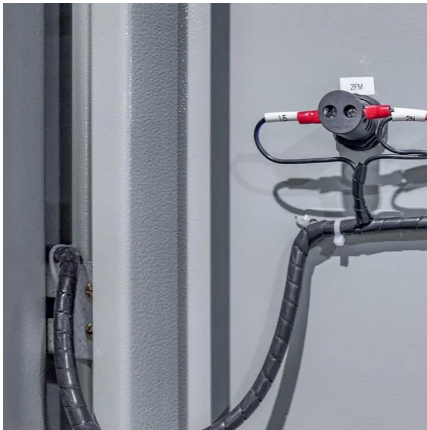
How Much Power Does 5G Base Station Consume?

Have you ever wondered how much energy our hyper-connected world is consuming? 5G base stations, the backbone of next-gen connectivity, now draw 3-4 times more power than their 4G ...

How much power does 5G consume?

One 5G base station is estimated to consume about as much power as 73 households (6), and 3x as much as the previous generation of base stations (5), (7). When base stations, data centers ...



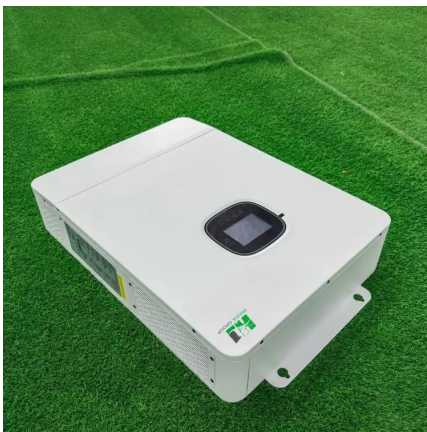


The Long Road to Sobriety: Estimating the Operational ...

These alarming figures advocate for proactive digital sobriety policies. Index Terms--Mobile Network, 5G, Base Station, Power Consumption, Digital Sobriety, France. I. ...

What is 5G Energy Consumption?

5G Base Station Power Consumption: With each base station carrying at least 5X more traffic and operating over more frequency bands, 5G base station power consumption is at least twice ...



Why does 5g base station consume so much power and how to ...

5G base stations use high power consumption and high RF signals, which require more signal processing for digital and electromechanical units, and also put greater pressure ...

What is the Power Consumption of a 5G Base Station?

These 5G base stations consume about three times the power of the 4G stations. The main reason for this spike in power consumption is the addition of massive MIMO and ...



A technical look at 5G energy consumption and performance

By putting the base station into a sleep state when there is no traffic to serve i.e. switching off hardware components, it will consume less energy. The more components that ...



Parsing the 5G power equation: Is 5G actually greener?

In China, according to Huawei, the total power consumption by telecom networks already exceeds 50 billion kWh - and that will double, once 5G networks are fully deployed, to ...



Why does 5g base station consume so much power ...

5G base stations use high power consumption and high RF signals, which require more signal processing for digital and electromechanical units, ...



Renewable energy powered sustainable 5G network ...

Renewable energy is considered a viable and practical approach to power the small cell base station in an ultra-dense 5G network infrastructure to reduce the energy provisions ...



5G Base Stations: The Energy Consumption Challenge

Early deployments indicate that 5G base stations require 2.5-3.5 times more power compared to a 4G one. Moreover, C-band, i.e., 3.4 GHz to 4.2 GHz, is deemed as the most popular 5G ...



Power Consumption: 5G Basestations Are Hungry, Hungry Hippos

Challenges of 5G deployment, according to Zhengmao Li, EVP China Mobile (biggest operator on the world). 1. 5G needs 3 X base stations for same coverage as LTE due ...



Power Consumption of 4G and 5G Networks

The fact of Sustainability in mobile networks starts with power reduction and meeting net-zero goals, and as we know wireless networks consume large amounts of ...



5G base stations use a lot more energy than 4G base ...

And this is expected to rise with the shift to 5G. A typical 5G base station consumes up to twice or more the power of a 4G base station, writes ...



How much power does a 5G base station consume? It is rumored ...

The operation of 5G base stations is also difficult to achieve a stable level. Although the network speed has increased compared with 4G, the growth rate is very limited. Therefore, ...

Contact Us

For catalog requests, pricing, or partnerships, please visit:
<https://www.talbert.co.za>