

Battery types used in mobile base stations





Overview

Base stations typically utilize varying types of batteries, with lead-acid batteries and lithium-ion batteries emerging as the most prevalent choices. What types of batteries does battery station carry?

Battery Station carries an extensive line of Duracell Plus and Duracell Ultra alkaline batteries as well as lithium batteries to fit all of your consumer electronics. We also offer their NiMH rechargeable batteries and chargers to save you money over a wide range of applications, as well as specialty batteries in different technologies.

What are the different types of Telecom batteries?

These batteries are integral to data centers, cell towers, and other communication infrastructures. There are several types of telecom batteries, each with unique characteristics suited for different applications: Lead-Acid Batteries: Commonly used due to their reliability and cost-effectiveness. They come in two main types:.

What is a telecom battery?

Telecom batteries play a crucial role in powering equipment, supporting backup systems, and facilitating smooth operations. This comprehensive guide will delve into the types of telecom batteries, their applications, maintenance tips, and the latest advancements in battery technology. 1. Understanding Telecom Batteries 2.

What are the different types of batteries?

They come in two main types: Flooded Lead-Acid (FLA): Require regular maintenance and electrolyte checks. Valve-Regulated Lead-Acid (VRLA): Maintenance-free and sealed, making them ideal for remote locations. Lithium-Ion Batteries: Gaining popularity due to their high energy density, longer lifespan, and lower weight.

What type of battery does a telecom system need?



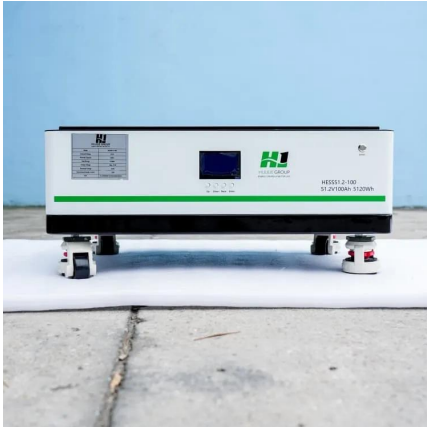
Beyond the commonly discussed battery types, telecom systems occasionally leverage other varieties to meet specific needs. One such option is the flow battery. These batteries excel in energy storage, making them ideal for larger installations that require consistent power over extended periods.

Are lithium-ion batteries a good choice for a telecom system?

Lithium-ion batteries have rapidly gained popularity in telecom systems. Their efficiency is unmatched, providing higher energy density compared to traditional options. This means they can store more power in a smaller footprint.



Battery types used in mobile base stations

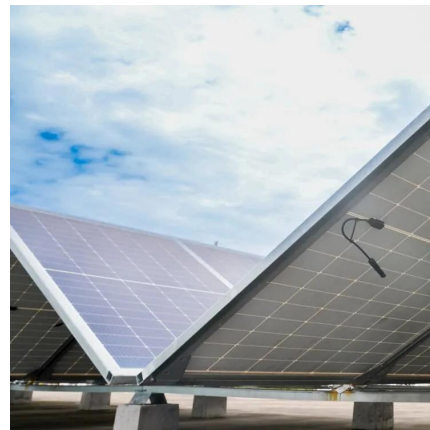


[Comprehensive Guide to Telecom Batteries](#)

This comprehensive guide will delve into the types of telecom batteries, their applications, maintenance tips, and the latest advancements in battery technology.

[Battery for Communication Base Stations Market](#)

The Battery for Communication Base Stations market can be segmented by battery type, including lithium-ion, lead acid, nickel cadmium, and others. Among these, lithium-ion batteries ...



[Communication Base Station Backup Battery](#)

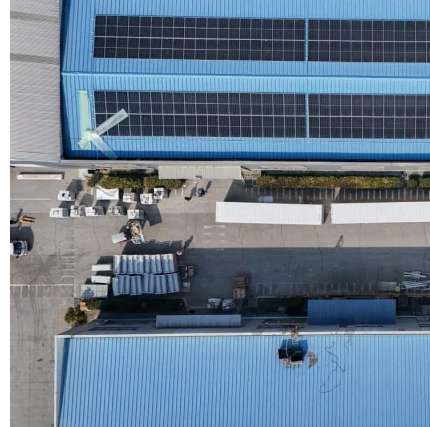
ECE 51.2V lithium base station battery is used together with the most reliable lifepo4 battery cabinet, with long span life (4000+) and stable performance. ...

Lithium Battery for Communication Base Stations Market

The global Lithium Battery for Communication Base Stations market is poised to experience



significant growth, with the market size expected to expand from USD 3.5 billion in 2023 to an ...



What Are the Key Considerations for Telecom Batteries in Base ...

Telecom batteries for base stations are backup power systems that ensure uninterrupted connectivity during grid outages. Typically using valve-regulated lead-acid ...

What Are the Key Considerations for Telecom Batteries in Base Stations?

Telecom batteries for base stations are backup power systems that ensure uninterrupted connectivity during grid outages. Typically using valve-regulated lead-acid ...



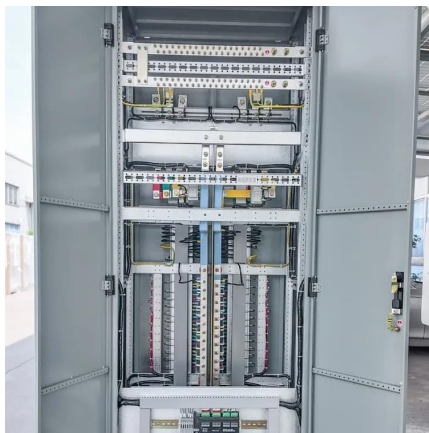
How many volts of battery are used in mobile base stations

To provide continuous power to the site, the telecom base station battery is widely used. They provide backup power to the cell site and thus are an important part of any telecom system. ...



Securing Backup Power for Telecom Base Stations - ...

Batteries are a core element of any backup power strategy. They provide immediate power when the grid fails and are often used in conjunction ...



Cooling for Mobile Base Stations and Cell Towers

Application Overview Bulky compressor-based air conditioners have traditionally been used for removing heat generated by communications equipment installed in base station and cell ...

What are base station energy storage batteries used for?

WHAT TYPE OF BATTERIES ARE USED IN BASE STATIONS? Base stations typically utilize varying types of batteries, with lead-acid ...



Choosing a 12V Battery for Your Mobile Base Station

For most mobile base station applications, AGM or Gel batteries offer a good balance of performance, maintenance, and cost. Li-ion batteries are a premium option with superior ...



What are base station energy storage batteries used for?

WHAT TYPE OF BATTERIES ARE USED IN BASE STATIONS? Base stations typically utilize varying types of batteries, with lead-acid batteries and lithium-ion batteries ...

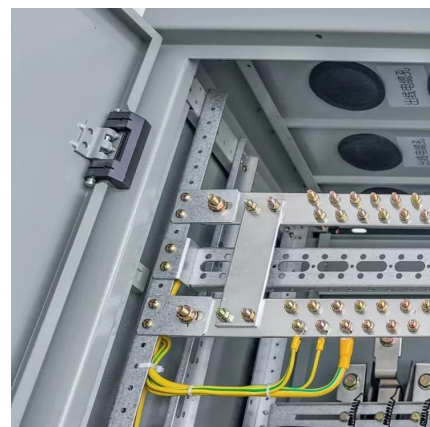


Evaluating the Dispatchable Capacity of Base Station Backup Batteries

Cellular base stations (BSs) are equipped with backup batteries to obtain the uninterruptible power supply (UPS) and maintain the power supply reliability. While maintaining the reliability, ...

Which Batteries Can Be Used as Backup Power Sources for ...

Several types of batteries can be used as backup power sources for communication base stations. The choice of battery depends on factors such as the power requirements of the base ...



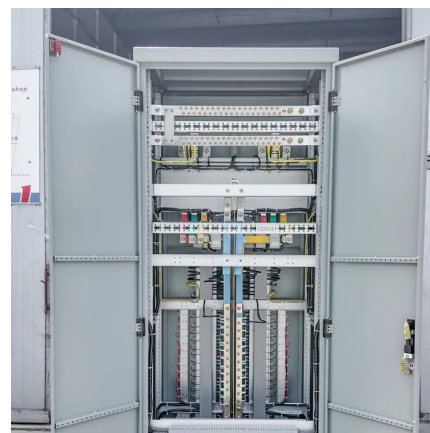


Recommended 5 GMRS Base Stations

Choose the best GMRS base station for your communication needs using my comprehensive guide with top recommendations and ...

[Battery life and energy storage for 5G equipment](#)

This is because a 5G network with local 5G base stations will dramatically increase computation speeds and enable the transfer of the bulk of computation from your smartphone to the cloud.
...



[Batteries used in mobile base stations](#)

In this paper, we closely examine the base station features and backup battery features from a 1.5-year dataset of a major cellular service provider, including 4,206 base

A Complete Guide to Mobile Batteries: Types , Mobile Oye

Explore everything about mobile batteries, including types, features, maintenance tips, and innovations. Learn how to extend battery life and when to replace your battery.



Environmental feasibility of secondary use of electric vehicle ...

Repurposing spent batteries in communication base stations (CBSs) is a promising option to dispose massive spent lithium-ion batteries (LIBs) from electric vehicles (EVs), yet ...



Types of Batteries Used in Telecom Systems: A Guide

Different types provide varying levels of efficiency and longevity, making the choice critical for telecom operators. With technology evolving ...



Thermoelectric Cooling for Base Station and Cell ...

Temperature control of sensitive telecom electronics in unattended mobile base stations and cell towers is vital for the operation of primary and ...





Battery Types Used In Mobile Devices - DIY Battery Restoration

Understanding the different battery types used in mobile devices not only informs us of their strengths and weaknesses but also helps us make better choices for our daily lives. Whether ...



What Is a Telecom Battery? Types, Applications, and Key Benefits

Discover what a telecom battery is, the types (VRLA, lithium), key applications in base stations & data centers, and benefits like reliability & backup time.

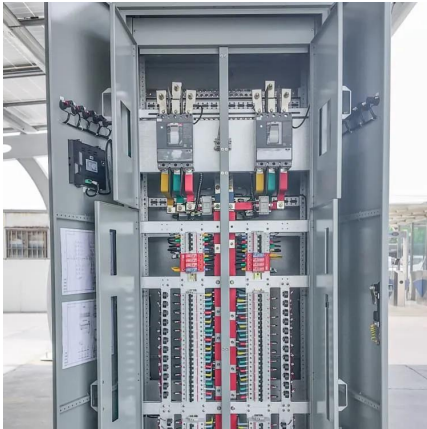
Securing Backup Power for Telecom Base Stations - leagend

Batteries are a core element of any backup power strategy. They provide immediate power when the grid fails and are often used in conjunction with other sources. ...



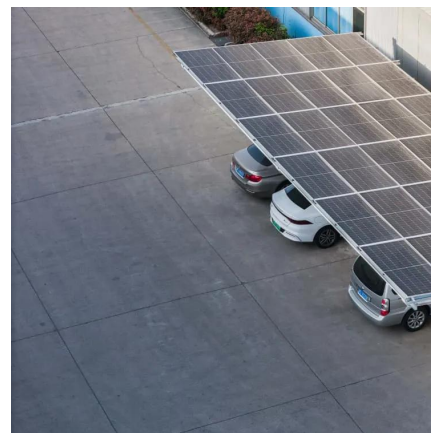
Types of Batteries Used in Telecom Systems: A Guide

Different types provide varying levels of efficiency and longevity, making the choice critical for telecom operators. With technology evolving rapidly, understanding the options ...



Cellular Base Stations

Two are used on the receive side so that the base station can compare signals and select the best antenna for each user within the cell. This ...



[\(PDF\) Design of Solar System for LTE Networks](#)

Rapid growth in mobile networks and the increase of the number of cellular base stations requires more energy sources, but the traditional ...

Types of Batteries Used in Telecom: A Practical Guide for ...

Choosing the right type of battery is not a one-size-fits-all decision. It depends on climate, installation environment, load demands, maintenance capacity, and long-term cost ...





Contact Us

For catalog requests, pricing, or partnerships, please visit:
<https://www.talbert.co.za>