

Battery Cabinet Current Direction Section





Overview

How do you mount a battery cabinet?

The battery cabinet is designed to mount on a wall or a standard 23" wide relay rack. Refer to Figure 3 and install the 23" relay rack mounting angles to the battery cabinet. Mounting hardware is provided with the battery cabinet. Torque these connections to 46 in-lbs. Install battery retention strap through openings in rear of cabinet.

How many amps can a battery cabinet hold?

However, a maximum system current of 30 amps should be maintained regardless of the number of interconnected cabinets. The battery cabinet is designed to hold the batteries listed in Table 1. Operating Ambient Temperature Range: -40 °C to +65 °C. Storage Ambient Temperature Range: -40 °C to +85 °C.

How many disconnects are required for a 211 series -48 Vdc battery cabinet?

More than one disconnect may be required to de-energize the system before servicing. The NetSure™ 211 Series -48 VDC battery cabinet can be mounted in a 23" relay rack or mounted to a wall. The battery cabinet contains one (1) 40 A battery disconnect circuit breaker and provides alarm leads attached to the common contacts of the breaker.

What temperature can a battery cabinet hold?

The battery cabinet is designed to hold the batteries listed in Table 1. Operating Ambient Temperature Range: -40 °C to +65 °C. Storage Ambient Temperature Range: -40 °C to +85 °C. Humidity: This unit is capable of operating in an ambient relative humidity range of 0% to 95%, non-condensing.

How do you secure a dynasty tel12-45 battery?

Refer to "Securing the Batteries Using the Strap" on page 23 for instructions



on securing the batteries using the buckle strap that is bundled along with the cabinet. Unscrew the front cover panel from the battery cabinet. Place the spacers in between the Dynasty Tel12-45 batteries. Refer to Figure 17. NOTE!.

How should a battery be serviced?

A battery can present a risk of electrical shock and high short circuit current. Servicing of batteries should be performed or supervised only by properly trained and qualified personnel knowledgeable about batteries and the required precautions. Follow the recommended PPE requirements per the SDS for the battery to be used.



Battery Cabinet Current Direction Section



Battery working principle and current direction

Why do batteries have a different flow of current? This variation is largely due to how batteries are designed to operate. The flow of electric current in a circuit depends on the type of battery and ...

Battery Cabinet Cost Structure and Optimiza-tion

The battery cabinets are manufactured by a subcontractor, and therefore all of the data about how the costs are divided between different aspects of the battery cabinets was not available ...



TechnologyCo.,LTD ESS-GRIDCabinetSeries UserManual

Warn: rials, avoid open storage, avoid battery stacking. The site must be equipped with qualified fire-fighting facilities, s h as fire-fighting sand, fire ex The battery should avoid impact. When ...

/15/20KVA UPS Battery Cabinet Installation and Operation ...

Installation or replacement of batteries must be located in a SERVICE ACCESS AREA: The service



manual shall include the following instructions for battery replacement and disposal:



Operations Manual ZincFive BC Series UPS Battery Cabinets

The Battery Cabinet will remain in the Standby State and will only begin charging when: SOC < 90% and all batteries are between 15°C-40°C Set the UPS to charge the Battery Cabinet with ...



-48 VDC Battery Cabinet Installation and User Manual ...

Procedure Refer to Figure 3 and install the 19" or 23" relay rack mounting angles to the battery cabinet. Mounting hardware is provided with the battery cabinet. Use a provided grounding ...



Battery cabinet current direction

Current flow in batteries? The easiest way to think of it is this: Current will only ever flow in a loop, even in very complex circuits you can always break it down into loops of current, if there is no ...



480.9 Battery Locations.

Section 480.9 (E) requires any personnel doors intended for entrance to, and egress from a battery room, to open in the direction of egress and be ...



NetSure(TM) 211 Series -48 VDC Battery Cabin

Connect the power system's battery cable terminated in an Anderson connector to the first battery cabinet's battery cable terminated in a mating Anderson connector.



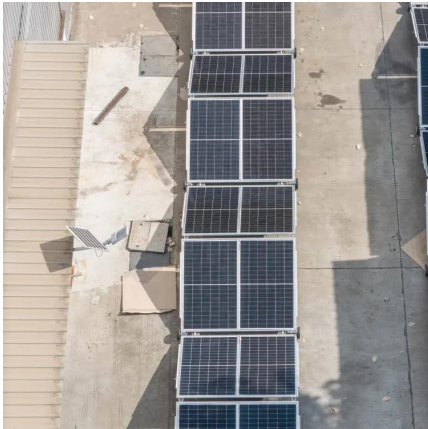
Arc-in-a-Box: DC Arc Flash Calculations Using a Simplified

Abstract A method is proposed for calculating the incident energy and the arc flash boundary distance for dc systems when an arc is bounded inside a space such as a battery cabinet. The ...



20.1: Current

Learning Objectives By the end of this section, you will be able to: Define electric current, ampere, and drift velocity Describe the direction of charge flow in ...



Battery Cabinet

Read this section and review the system drawing thoroughly before attempting to install wiring to the cabinet. Be sure that the cabinet is not connected to any AC utility power before installing ...



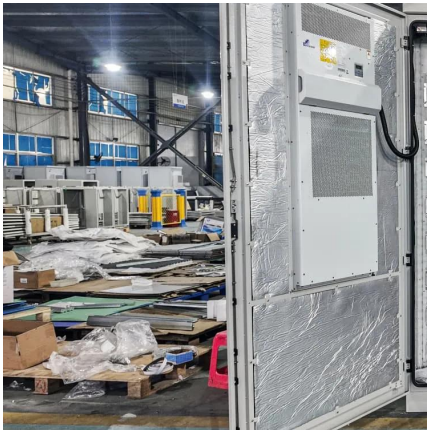
-48 VDC Battery Cabinet Installation and User Manual ...

Verify that no current will flow when the battery is connected or disconnected by opening battery disconnects (if available) or adjusting the system to match battery voltage.

Battery Flow Directions: Understanding Current, Electron ...

Electric charge flows in an electric circuit from the battery's positive terminal to its negative terminal. This established convention defines the direction of current. Grasping this ...





USER MANUAL BATTERY CABINET

Before installing batteries into the cabinet, carefully remove all items from inside the cabinet and lay it on its back, preferably on a clean surface or a furniture blanket.

BC58 Battery Cabinet Installation, Operation, & Maintenance ...

The option provides functional access to the equipment circuit breaker via a handle located on the exterior of a cabinet door that is physically connected to the circuit breaker in the cabinet's ...



Eaton Samsung Gen 3 Battery Cabinet Installation and ...

Before installing the battery cabinet, read and understand how this manual applies to the system being installed. Use the procedures and illustrations in this section to create a logical plan for ...

USER MANUAL BATTERY CABINET

Cable sizing from the battery cabinet to the remainder of the ESS is dependent on multiple factors including the system maximum current draw, distance between the battery cabinet and ESS, ...



Galaxy Lithium-ion Battery Cabinet

o The battery cabinet contains an internal energy source. Hazardous voltage can be present even when the UPS system is disconnected from the utility/ mains supply. Before installing or ...



E-Micromobility Battery Charging Cabinet Equipment and ...

Fire Code The Fire Code Section 309.3 requires that "Battery packs and other removable storage batteries shall not be stacked or charged in an enclosed cabinet (unless the cabinet is ...



Which Direction Does A Car Battery'S Current Flow?

The current flows from the battery in one direction via its positive terminal and back to it via its negative terminal, also known as its earth ...



Mitsubishi Electric Power Products, Inc. BC43 Battery ...

Battery cabinets that are not supplied with an incorporated DC output disconnect device must have an appropriate disconnect device provided external to the cabinet.



IR N-3: Modular Battery Energy Storage Systems

BACKGROUND Battery energy storage systems (BESS) are devices that enable energy from renewables, like solar and wind, to be stored and then released when customers need powers ...



Owner's Manual Extended-Run Battery Cabin

Prepare the surface where the cabinet will be placed. The surface must be clean, flat and able to support the battery cabinet and other equipment installed nearby. See Section 7.4 for floor ...



Contact Us

For catalog requests, pricing, or partnerships, please visit:
<https://www.talbert.co.za>