

Base station power equipment classification





Base station power equipment classification



Types Of Automatic Identification Systems (Per ITU-R M.1371 ...

U.S. stations that also act as AIS ATONs or transmit ASMs are denoted in the Coast Guard Light List. The private sale or use of AIS base stations in the U.S. by private ...

5G NR Base Station Classes

As per 3GPP specification TS 38.104, the NR Base Station can be classified in following categories considering conducting (cabled) and radiating ...



5G NR Base Station types

It covers Wide area base stations, Medium range base stations, and local area base stations. The Associated deployment scenarios for each class are ...

5G , ShareTechnote

In every cellular technology from 2G through 5G, Power classes are vital for defining the transmission power levels of devices and base



stations. These classifications help in ...



Ham radio base station: Best choices to start with

A Ham radio base station can have many equipment other than the base transceiver. Antennas, Antenna Tuners, SWR meter, A computer or ...



Updates on Guidelines for 5G Equipment Authorization

DSS (Dynamic Spectrum Sharing) functionality can be added to for a certified Base Station operating with LTE B5 and the 5G NR n5 bands. DSS addition does not require operational ...



Classification of Electrical Substations on 5 Basis

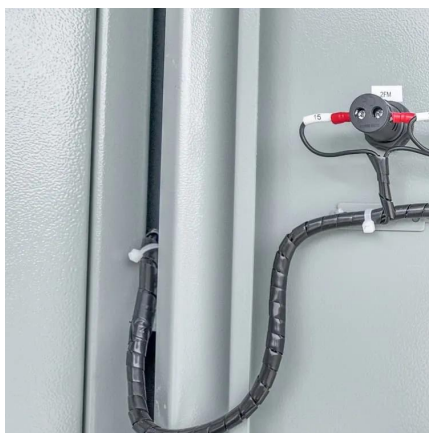
Classification of Substations The substation is the medium of transferring the power from generating unit to the consumer end. It consists different types of equipment like transformer, ...





5G NR Base Station Classes

- 5G NR Base Station Classes 5G NR (New Radio) is a new radio access technology (RAT) developed by 3GPP for the 5G (fifth generation) ...



Types of Cell Towers and Cell Sites You Need to Know

All equipment (antenna, building and ground) used to transmit cell signals to and from the mobile device back to the receiver. Typically includes transmitter/receivers, GPS, ...

TS 138 113

The present document specifies the applicable requirements, procedures, test conditions, performance assessment and performance criteria for NR base stations and associated ...



Setting Up Your Ham Radio Station: A Step-by-Step ...

Most base station transceivers require an external AC power supply, providing a stable source of 12-14 VDC. Choose a power supply with a sufficient ...



2023 NEC Study Guide For "Gas Station Wiring"

What we refer to in the field as "Gas Station Wiring" can be broken down into two basic categories of the NEC. NEC Art. 511 applies to the servicing areas. NEC Art. 514 applies to the fuel ...



Types of Base Stations

Base stations are one of the widely used components in the field of wireless communication and networks. It is an access point or base point of a particular area for ...

5G NR Base Station types

It covers Wide area base stations, Medium range base stations, and local area base stations. The Associated deployment scenarios for each class are exactly the same for BS with and without ...



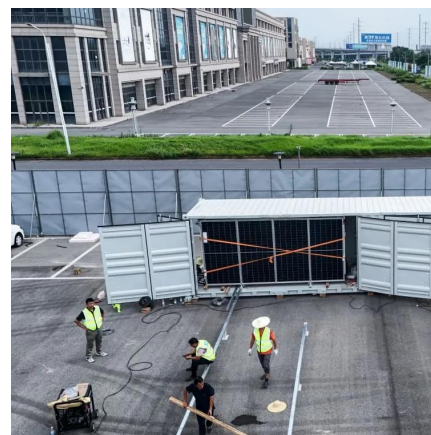


6.2 Base station output power - TechSpec

The output power limit for the respective BS classes in table 6.2.2.1-1 shall be compared to the rated output power and the declared BS class. It is not subject to testing.

Equipment for Your Ham Radio Station

Essential Equipment for a Ham Radio Station
Setting up a ham radio station requires a few essential pieces of equipment. In this section, we will discuss ...



Electrical Equipment Used in Power Plants

The following points highlight the seven important electrical equipment used in power plants. The equipment are: 1. Excitation Systems 2. Excitation Control 3. Automatic Voltage Regulators 4. ...

5G NR UE Power Classes Explained

This page describes the 5G NR UE Power Classes or types, specifically class 1, class 2, class 3, and class 4. It outlines the minimum peak EIRP and maximum output power limits for 5G NR ...



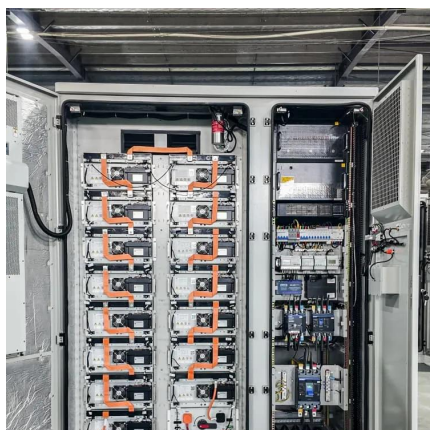
TS 103 786

ETSI ES 202 706-1 [i.6] defines daily average power consumption of the base station (static method), and ETSI TS 102 706-2 [i.5] defines energy efficiency measurement of the LTE base ...



Base Stations

The present-day tele-space is incomplete without the base stations as these constitute an important part of the modern-day scheme of wireless communications. They are ...



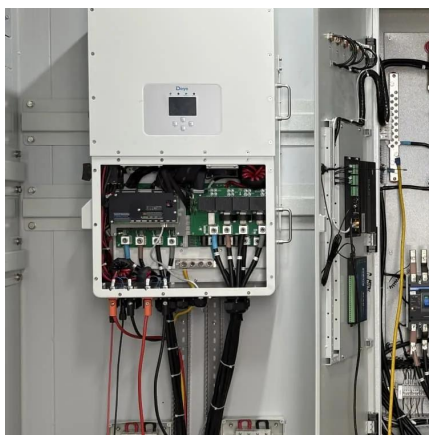
[10 Best Ham Radio Base Station For Long Range ...](#)

In this article, we have described details of different Ham radio base station that will help you to select the best one based on your needs.



Power System Voltage Level Classification

What Is a Voltage Class? 1. Definition of Voltage Class Voltage classes (voltage levels) are a set of rated voltages adopted in power systems and electrical equipment. A rated voltage is the ...



Base Stations

The present-day tele-space is incomplete without the base stations as these constitute an important part of the modern-day scheme of wireless ...

LLVD and BLVD in Base Station Power Cabinets

Introduction In modern communication networks, base stations, as core infrastructure, are crucial for stable operation. The base station power cabinet is a key equipment ensuring continuous ...



5G NR Base Station Classes

As per 3GPP specification TS 38.104, the NR Base Station can be classified in following categories considering conducting (cabled) and radiating (OTA) requirement ...



A Guide to United States Electrical and Electronic Equipment ...

Omni Directional CB base station antennas must comply with the specified requirements for field joints, feed cables, electrical protection, manufacturer's instructions and warnings, and ...



Base Station Class

Base station classes refer to the categorization of base stations into wide area, medium range, and local area types, each defined by specific RF requirements and deployment scenarios, ...

Contact Us

For catalog requests, pricing, or partnerships, please visit:
<https://www.talbert.co.za>