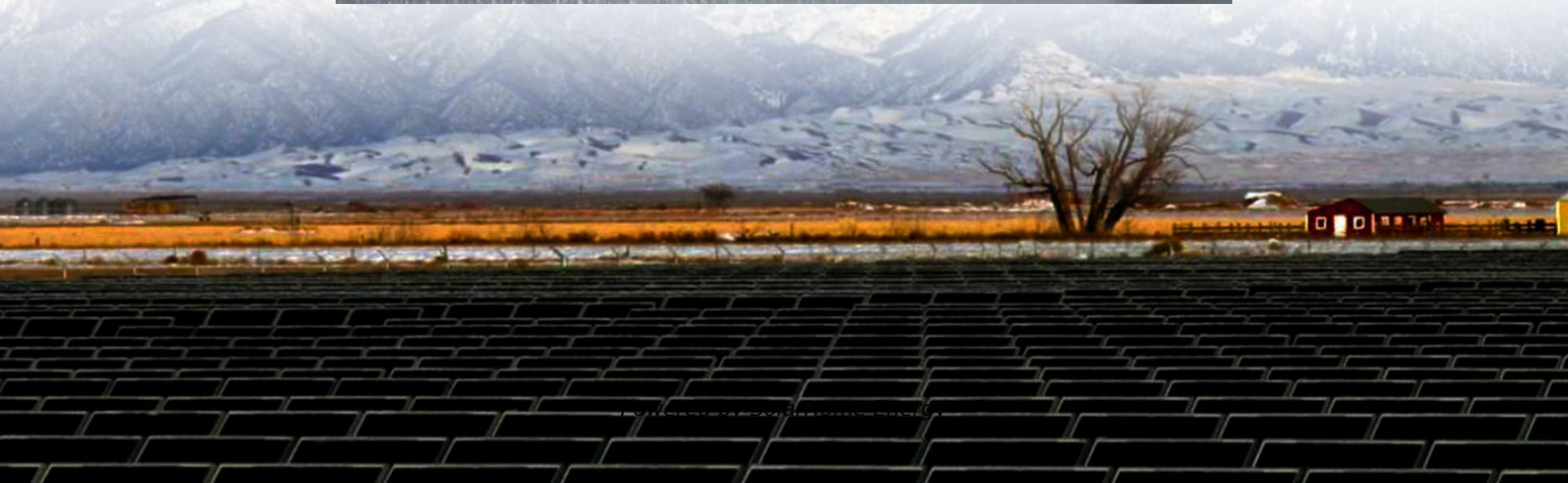


Base station equipment installation for communication engineering





Overview

What should I consider when designing a base station?

Whatever you're designing, you'll need to consider cost, ease of installation and assembly and, of course, flammability. This goes for a femtocell base station or 5G small cell backhaul, base transceiver station architecture, or a cellular base-station equipment. We recommend you use nylon material where it's offered.

What is a base station?

What is Base Station?

A base station represents an access point for a wireless device to communicate within its coverage area. It usually connects the device to other networks or devices through a dedicated high bandwidth wire of fiber optic connection. Base stations typically have a transceiver, capable of sending and receiving wireless signals;.

What are the components of a base station?

Power Supply: The power source provides the electrical energy to base station elements. It often features auxiliary power supply mechanisms that guarantee operation in case of lost or interrupted electricity, during blackouts. **Baseband Processor:** The baseband processor is responsible for the processing of the digital signals.

What are the different types of base stations?

Some basic types of base stations are as follows: Macro-base stations are tall towers ranging from 50 to 200 feet in height, placed at strategic locations to provide maximum coverage in a given area. Those are equipped with large towers and antennas that transmit and receive radio signals from wireless devices.

What material should a base-station be made of?



This goes for a femtocell base station or 5G small cell backhaul, base transceiver station architecture, or a cellular base-station equipment. We recommend you use nylon material where it's offered. It's a cost-effective option for a durable and lightweight material. Here are the base-station components to make your job easier:.

Why are base stations important in cellular communication?

Base stations are important in the cellular communication as it facilitate seamless communication between mobile devices and the network communication. The demand for efficient data transmission are increased as we are advancing towards new technologies such as 5G and other data intensive applications.



Base station equipment installation for communication engineering

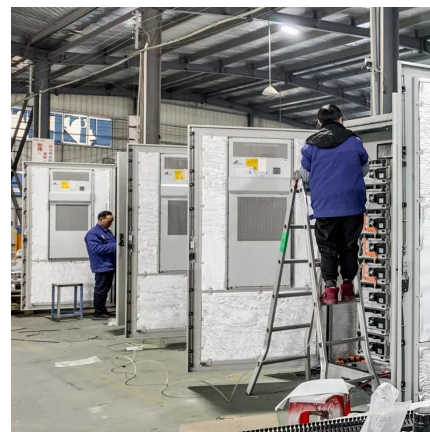


Telecom Field Engineering: Base Station Installation Insights

In this article, we explore the intricate process of base station installation, discuss the evolving role of the Telecommunications Field Engineer, and examine how Business Intelligence (BI) ...

Cellular Base Stations

As you drive along the highway, you may notice cellular towers or cellular base stations appearing every few miles. A base station is the ...



NEW SITE installation in TELECOM

After the engineering and design phase, the actual installation process begins. This includes installing the equipment, such as antennas, cables, and power systems, and ...

Base Transceiver Stations (BTS)

A Base Transceiver Station, commonly known as BTS, is a critical piece of equipment in wireless communication networks. It serves as the



primary point of contact between user devices,
such ...

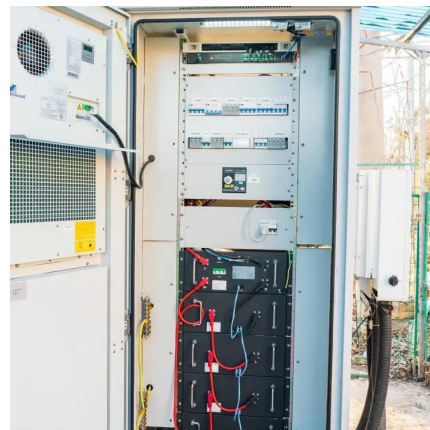


What Is A Base Station?

A base station is an integral component of wireless communication networks, serving as a central point that manages the transmission and reception of signals between ...

Base Station Engineer

higher technical education, the specialization in the fields of telecommunications, communications engineering or related ones; at least 2 years of experience in designing, deploying and support ...



Quick guide: components for 5G base stations and antennas

Your 5G base-station design and 5G antenna components will need to address not only technical challenges, but also aesthetics, weather and security requirements. This guide ...



Services

STS provides various services related to cell site construction, but is not limited to the services listed below. We are experienced in all communications from ...



Installation Criteria for a 5G Technology Cellular Base Station

Therefore, the objective of this research article is focused on proposing installation criteria that an operator must have into consideration when doing a 5G implementation, like the cellular base ...

Base Stations

The present-day tele-space is incomplete without the base stations as these constitute an important part of the modern-day scheme of wireless ...



Microsoft Word

Program Manager (PM) District employee designated to oversee the process of application, authorization, and installation of communication antennas on District facilities. Master License ...



Types and Applications of Mobile Communication Base Stations

Mobile communication base station is a form of radio station, which refers to a radio transceiver station that transmits information between mobile phone terminals through a ...

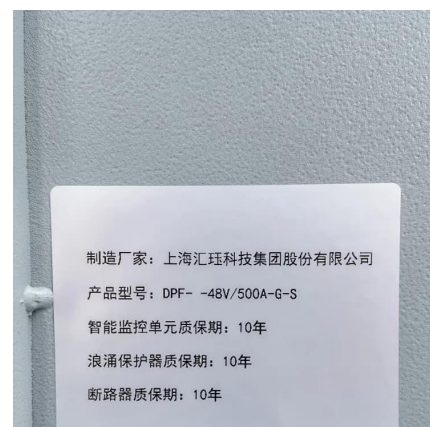


Communications Shelters , Telecom Equipment ...

Communications Shelters safeguard sensitive telecom equipment from overheating by managing internal temperatures at optimal operating conditions.

Base Stations

The present-day tele-space is incomplete without the base stations as these constitute an important part of the modern-day scheme of wireless communications. They are ...



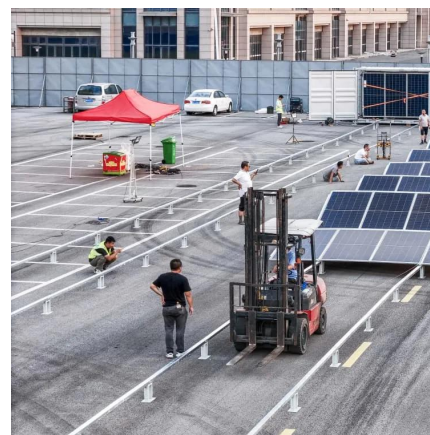


Process of Installing a Base Transceiver Station (BTS) ...

Installing a Base Transceiver Station (BTS) is a critical step in building mobile communication networks. Here's a step-by-step guide to the ...

What is the cost of building and maintaining a communication base station

In conclusion, building and maintaining a communication base station involves significant initial setup costs and ongoing maintenance expenses. These costs can vary widely depending on ...



Microsoft Word

MISSION The 213th Engineering Installation Squadron provides for the engineering, Installation, and removal, and relocation of ground communication-electronics systems, and to provide for ...

Tactical com: radio antenna installation and radio

Study with Quizlet and memorize flashcards containing terms like Never erected the antenna where powerlines could possibly sag or break and come into contact with the antenna or ...



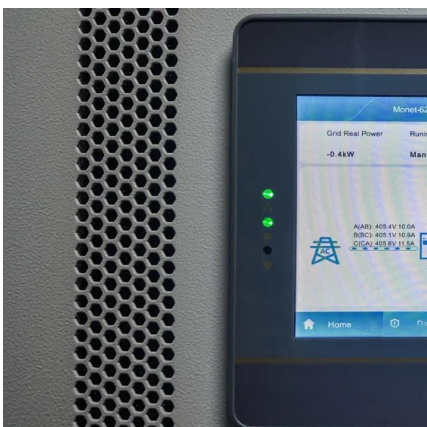
Communication Base Station Equipment Installation Jobs in

Search 20 Communication Base Station Equipment Installation jobs now available in Ontario on Indeed , the world's largest job site.



Base Station Installation & Maintenance Test Solutions

Anritsu provides solutions for performance checking during base station installation as well as for maintenance.



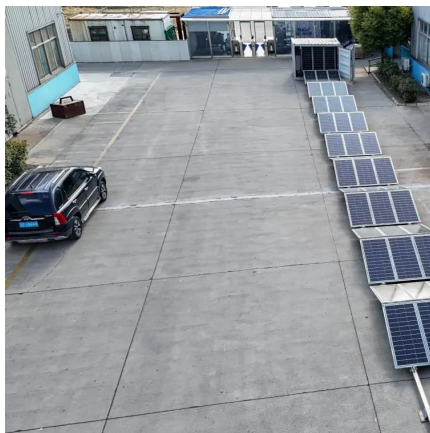
[Free Shipping on Most Orders Over \\$99 at DX ...](#)

Ham radio antenna, transceivers, coax cable & other amateur radio gear. DXE carries top ham radio brands including Yaesu, Kenwood, ICOM, MFJ, ...



Mobile Network Engineering Services

Specialists in BTS installation and play a vital role in deploying and configuring these systems to provide optimal network coverage. This includes site ...

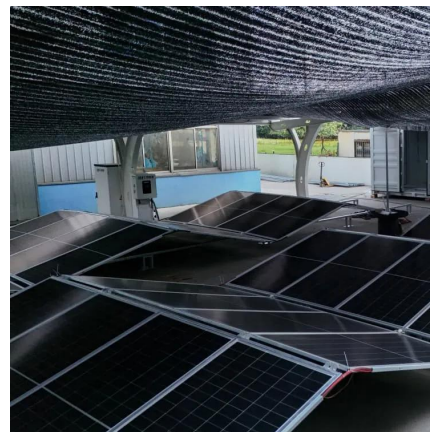


Radio Antenna Installation and Radio Repeater module post test

Tactical Communications CBT module 3 post test
Learn with flashcards, games, and more -- for free.

Mobile Network Engineering Services

Specialists in BTS installation and play a vital role in deploying and configuring these systems to provide optimal network coverage. This includes site selection, equipment assembly, and ...



Process of Installing a Base Transceiver Station (BTS)

Installing a Base Transceiver Station (BTS) is a critical step in building mobile communication networks. Here's a step-by-step guide to the process:



Base Station Transmits: Installation

The goal of Base Station Transmits is to discuss challenges faced by engineers and technicians who must optimize today's wireless networks. Topics include antenna ...



Communication equipment base station installation auxiliary ...

A technology for communication equipment and installation assistance, which is applied in wireless communication, selection devices, electrical components, etc. It can solve the ...

What is the cost of building and maintaining a communication ...

In conclusion, building and maintaining a communication base station involves significant initial setup costs and ongoing maintenance expenses. These costs can vary widely depending on ...





Contact Us

For catalog requests, pricing, or partnerships, please visit:
<https://www.talbert.co.za>