

Base station ensures safe communication distance





Overview

Base station antennas are installed in such a way that radio-wave exposure in public areas is well below the established safety limits. Mobile phones and other mobile devices require a network of base stations in order to function.

Mobile phones and other mobile devices require a network of base stations in order to function. The base station antennas transmit and receive RF (radio.

The base station antennas are usually placed on rooftops, in masts or on building walls. Antennas are sometimes also installed in shopping malls, airports.

Each base station can only serve a limited number of mobile devices at a time. As the number of mobile devices in a community grows, more base stations.

The antenna output power level is typically between 10 and 100 watts for an outdoor base station. Television transmitters, by comparison, usually have a.

What is a radio base station?

In the world of radio communications, a radio base station plays a vital role in ensuring reliable and seamless communication across a wide area. Whether used in mobile networks, professional communication systems, or emergency response scenarios, base stations are essential for facilitating voice, data, and video transmissions.

Why are radio base stations important?

Radio base stations ensure seamless communication over large geographical areas, making them essential for public safety, transportation, and enterprise networks. They can be scaled to meet the growing communication needs of industries such as manufacturing, utilities, or emergency response.

What does a base station do?

It serves as the central hub that connects multiple user devices (such as radios, mobile phones, or IoT devices) to a network, enabling long-range



communication. Base stations are equipped with transmitters and receivers, which help to send and receive radio signals to and from mobile devices.

Why are base stations important in cellular communication?

Base stations are important in the cellular communication as it facilitate seamless communication between mobile devices and the network communication. The demand for efficient data transmission are increased as we are advancing towards new technologies such as 5G and other data intensive applications.

Do mobile phones need a base station?

Mobile phones and other mobile devices require a network of base stations in order to function. The base station antennas transmit and receive RF (radio frequency) signals, or radio waves, to and from mobile phones near the base station. Without these radio waves, mobile communications would not be possible.

Is a cellular base station safe?

Like other radio towers, such as those used in broadcast radio and television, the use and construction of a cellular base station is regulated by the FCC, and the RF energy levels it can produce fall well below levels considered to pose a threat to health. The antennas themselves must be kept inaccessible to the public, and at a safe range.



Base station ensures safe communication distance



Human Exposure to Radio Frequency Fields: Guidelines for ...

Human Exposure to Radio Frequency Fields: Guidelines for Cellular Antenna Sites Primary antennas for transmitting wireless telephone service, including cellular and Personal ...

Setting Up a Base Station CB Radio for Long Range Communication

When it comes to long-range communication, a base station CB radio is the preferred choice for industries like trucking, off-roading, and those in rural areas. These radios ...



[What Are Base Station Antennas? Complete Guide](#)

CB base station antennas are specifically designed to ensure effective transmission and reception of CB radio signals to provide consistent, ...

[Public Safety Communications Resiliency](#)

EXECUTIVE SUMMARY Federal, state, local, tribal, and territorial public safety entities rely on voice



and data communications networks to achieve their missions. Yet, communications ...



[What Are Base Station Antennas? Complete Guide](#)

CB base station antennas are specifically designed to ensure effective transmission and reception of CB radio signals to provide consistent, reliable and high-quality ...

Base Station's Role in Wireless Communication Networks

Yes, base stations can be used in remote areas to provide wireless communication services. In these areas, deployable solutions like satellite-linked base stations or solar-powered units ...



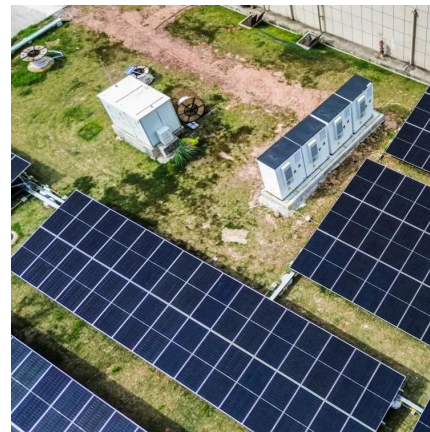
Why Choose Base Station for Reliable Communication , KSA

Choose SaudiaRadios's base station for secure, long-range communication in Saudi Arabia, ideal for tough conditions and key industries.



Radio Base Stations for Secure Communication

Radio base stations ensure seamless communication over large geographical areas, making them essential for public safety, transportation, and enterprise networks. They can be scaled to ...



Unmanned aerial vehicles: Applications, techniques, ...

This survey article focuses on the different applications and the related algorithms for realizing aerial base stations by thoroughly reviewing ...

5G base station architecture, Part 1: Evolution

The other recent big 5G meeting took place shortly thereafter on April 14-15 in Palo Alto, CA. This was called the 5G Forum USA launched by ...



Base stations and networks

Mobile phones and mobile devices require a network of radio base stations to function. Radio waves have been used for communication for more than 100 years.



Mobile Phone Base Stations and RF Radiation , IMDA

IMDA works closely with the National Environment Agency (NEA), the national authority for radiation protection, to ensure that RF radiation safety requirements from mobile ...



The Architecture of Modern Ground Stations

The intricate network of components comprising modern ground stations is a testament to the precision and complexity required in satellite ...

ICNIRP , Base Stations

Over large distances, the signals must be relayed by a communication network comprising base stations and often supported by a wired network. The power of a base station varies (typically ...



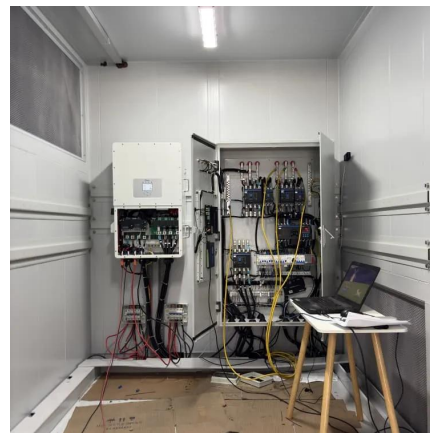


The Base Station in Wireless Communications: The ...

Equipped with an electromagnetic wave antenna, often placed on a tall mast, the base station enables communication between mobile terminals ...

Base Stations and Energy Levels

Since the base station and the devices connected to utilize low power radio waves, they aren't considered to be dangerous, so long as the ...

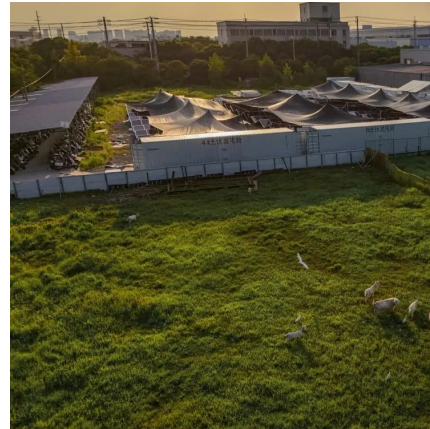


Base Stations

Base stations form a key part of modern wireless communication networks because they offer some crucial advantages, such as wide coverage, continuous communications and ...

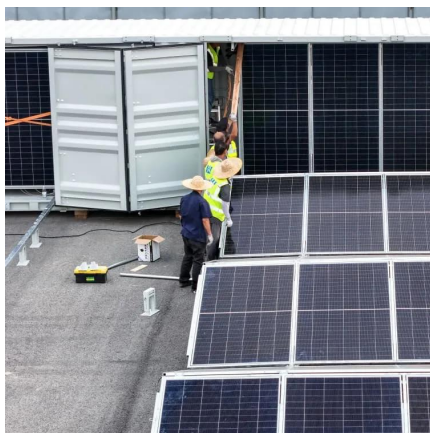
The Base Station in Wireless Communications: The ...

Base station, also known as BTS (Base Transceiver Station), is a key device in wireless communication systems such as GSM. Equipped with ...



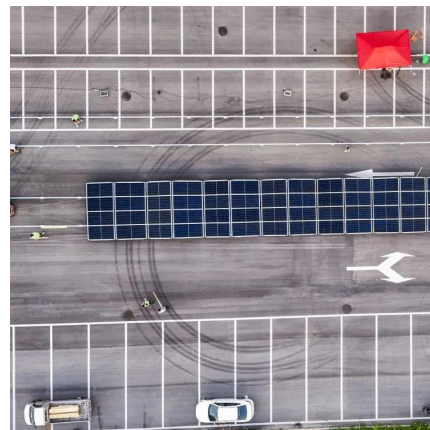
Base Stations and Energy Levels

Since the base station and the devices connected to utilize low power radio waves, they aren't considered to be dangerous, so long as the antenna portion of the station is kept at ...



Base stations and networks

Base station antennas are installed in such a way that radio-wave exposure in public areas is well below the established safety limits. Mobile phones and other mobile devices require a network ...



What Is the Role of a Base Station in Wireless Communication?

Base stations are critical components in wireless communication networks, serving as the intermediary between mobile devices and the core network. They play a vital role in ...





The Base Station in Wireless Communications: The Key to ...

Base station, also known as BTS (Base Transceiver Station), is a key device in wireless communication systems such as GSM. Equipped with an electromagnetic wave ...



Base Stations

Base stations form a key part of modern wireless communication networks because they offer some crucial advantages, such as wide ...

Base Stations and Cell Towers: The Pillars of Mobile Connectivity

Base stations and cell towers are critical components of cellular communication systems, serving as the infrastructure that supports seamless mobile connectivity. These ...



Land Mobile Radio (LMR) 101

Base station radios are located in fixed positions, such as public safety answering points or dispatch centers, and tend to have the most powerful transmitters. A network is required to ...



The Base Station in Wireless Communications: The Key to ...

Equipped with an electromagnetic wave antenna, often placed on a tall mast, the base station enables communication between mobile terminals (such as mobile phones or ...



3D deployment of UAV-mounted base stations for

Recently, unmanned aerial vehicles (UAVs) have been reported a lot as aerial base stations (BSs) to assist wireless communication in Internet of Things (IoT). However, most ...

RF safety

Before entering a base station or antenna site, personnel must acquaint themselves with the up-to-date technical and safety information provided by their employer, the site management ...





Setting Up a Base Station CB Radio for Long Range ...

When it comes to long-range communication, a base station CB radio is the preferred choice for industries like trucking, off-roading, and those in rural areas. These radios ...

Contact Us

For catalog requests, pricing, or partnerships, please visit:
<https://www.talbert.co.za>