

Base station communication equipment includes





Overview

In the area of wireless computer networking, a base station is a radio receiver/transmitter that serves as the hub of the local wireless network, and may also be the gateway between a wired network and the wireless network. It typically consists of a low-power transmitter and .

The hardware components of a base station include antennas, radios, and processing units, while the software components include network management software and control software. Antennas are a key component of a base station, providing the interface between the wireless device and the base station. What is a base station in a telecommunications network?

A base station is a critical component in a telecommunications network. A fixed transceiver that acts as the central communication hub for one or more wireless mobile client devices. In the context of cellular networks, it facilitates wireless communication between mobile devices and the core network.

What does a base station do?

Base stations are responsible for transmitting and receiving data to and from wireless devices, as well as managing network resources and ensuring reliable and efficient communication. The basic function of a base station is to convert wireless signals into digital signals that can be transmitted over a wired network infrastructure.

How does a wireless device communicate with a base station?

When a wireless device, such as a mobile phone, communicates with a base station, the device sends a signal to the base station, which converts the signal into digital form and sends it to the network. Similarly, when the network sends data to the device, the base station converts the digital data into a wireless signal that the device can receive.

What equipment does a base station need?

Control Equipment: Base stations include control equipment that manages the communication protocols and coordinates the interaction between mobile devices and the network. This equipment ensures that data is routed correctly



and efficiently. Power Supply: A reliable power supply is essential for the continuous operation of a base station.

How does a base station communicate with a client device?

Generally, if client devices wanted to communicate to each other, they would communicate both directly with the base station and do so by routing all traffic through it for transmission to another device. Base stations in cellular telephone networks are more commonly referred to as cell towers.

Why are base stations important for modern telecommunications?

In summary, base stations are critical for modern telecommunications as they serve as the link between mobile devices and the extensive network infrastructure that spans the globe. The strategic deployment and ongoing improvement of these stations are essential for maintaining global connectivity.



Base station communication equipment includes



Types and Applications of Mobile Communication ...

Mobile communication base station is a form of radio station, which refers to a radio transceiver station that transmits information between mobile ...

Base station

In the area of wireless computer networking, a base station is a radio receiver/transmitter that serves as the hub of the local wireless network, and may also be the gateway between a wired ...



Base Stations

The present-day tele-space is incomplete without the base stations as these constitute an important part of the modern-day scheme of wireless communications. They are ...

[What Are Base Station Antennas? Complete Guide](#)

Base station antennas play a fundamental role in wireless communication systems by enabling the



signal transmission and receive between the base stations and mobile devices.



The Base Station in Wireless Communications: The ...

Equipped with an electromagnetic wave antenna, often placed on a tall mast, the base station enables communication between mobile terminals ...



What is a base station?

A base station will have one or more radio frequency (RF) antennas to transmit and receive RF signals to other devices. Base stations are also central points that all clients ...



BBU (Baseband unit)

Introduction A Baseband Unit (BBU) is a key component in wireless communication systems such as cellular networks. It is responsible for ...



The Base Station in Wireless Communications: The Key to ...

Equipped with an electromagnetic wave antenna, often placed on a tall mast, the base station enables communication between mobile terminals (such as mobile phones or ...



Mobile base station

Key challenges Mobile base station designers often need to manage the following aspects: Compatibility for integrating base transceiver stations between different vendors' equipment. ...

What Is A Base Station?

A base station is a piece of equipment that facilitates wireless communication between devices and a network. It contains the necessary hardware and software to transmit ...



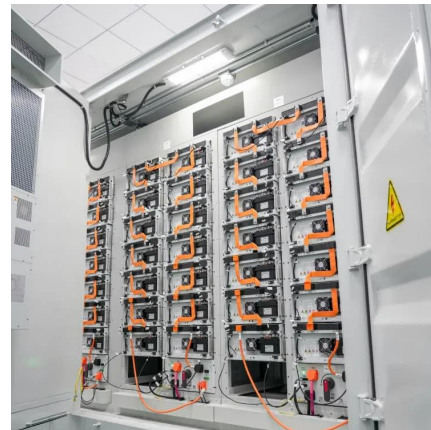
Base Station Subsystem: Key Component in Mobile Networks

Unlock the mysteries of mobile communication with a deep dive into what a Base Station Subsystem does for your network connectivity.



What is a Base Station in Telecommunications?

Discover the role and functionality of a base station in telecommunications networks. Learn how these critical components manage communication ...

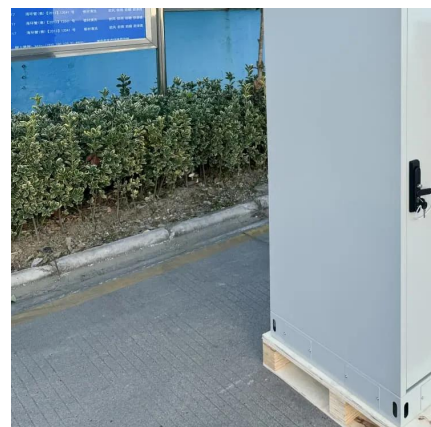


EMT-B Chapter 4 Quiz Flashcards . Quizlet

Study with Quizlet and memorize flashcards containing terms like Which of the following is NOT a function of the Federal Communications Commission (FCC)? A. Maintaining communications ...

Understanding Macro Towers: The Backbone of Wireless ...

Macro towers, also known as cell towers or base stations, are tall structures designed to support antennas and other telecommunications equipment. These towers are crucial for enabling ...





Base station

OverviewComputer networkingLand surveyingWireless communicationsSee also

In the area of wireless computer networking, a base station is a radio receiver/transmitter that serves as the hub of the local wireless network, and may also be the gateway between a wired network and the wireless network. It typically consists of a low-power transmitter and wireless router.

5G Base Station Architecture

The Base Station cabinet is a single unit that includes both the RF functions and the baseband processing functions. The antenna subsystem connects with the ...

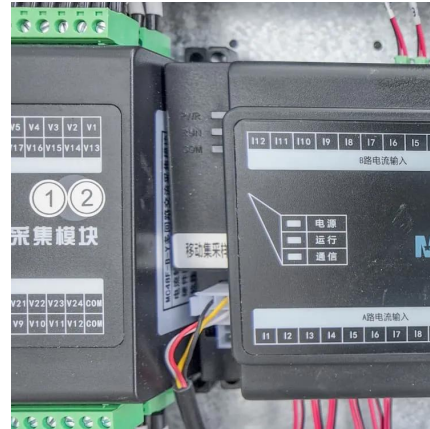


Guide to Base Station Communications Equipment , Office of ...

The guide then describes basic equipment needed in a base station: a transceiver (transmitter and receiver), a control device, microphone and speaker, a transmission line, and an antenna.

[What Are Base Station Antennas? Complete Guide](#)

Base station antennas play a fundamental role in wireless communication systems by enabling the signal transmission and reception ...



The Base Station in Wireless Communications: The ...

Base station, also known as BTS (Base Transceiver Station), is a key device in wireless communication systems such as GSM. Equipped with ...



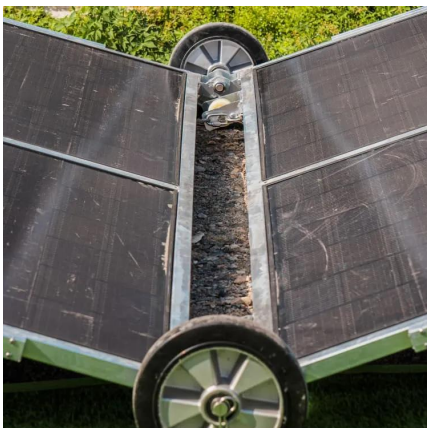
BS (Base Station)

The hardware components of a base station include antennas, radios, and processing units, while the software components include network management software and ...



Cell site

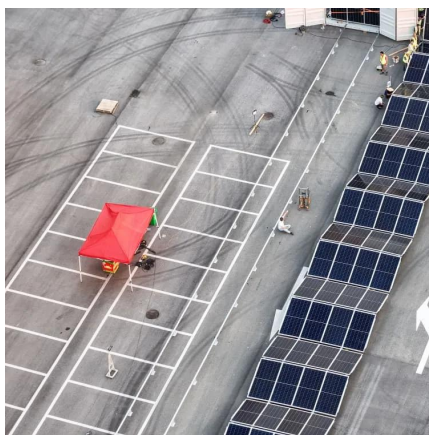
A cell tower in Peristeri, Greece A cell site, cell phone tower, cell base tower, or cellular base station is a cellular -enabled mobile device site where antennas ...





Base Station Equipment - SolveForce Cloud Computing

Base station equipment, also known as cell site equipment, is a crucial component of cellular networks and wireless communication systems. It plays a central role in facilitating wireless ...



Optimizing the power supply design for ...

The design of the power supply system of the communication base station is critical to ensure the stable operation of the equipment.

2-Way Radio Base Stations -- Silke Communications

Formerly known as RELM Wireless, BK Technologies builds radios for heroes. The company manufactures communications equipment of unsurpassed reliability and value for use by ...



BS (Base Station)

The hardware components of a base station include antennas, radios, and processing units, while the software components include network ...



What Is A Base Station Antenna

base station antenna is a crucial component of wireless communication networks, primarily used to facilitate the transmission and reception of radio waves between a network ...



RBS (radio base station)

A Radio Base Station (RBS), also known as a base transceiver station (BTS), is a key component of a cellular network infrastructure. It serves as the interface between mobile ...

Base Stations

The present-day tele-space is incomplete without the base stations as these constitute an important part of the modern-day scheme of wireless ...





[What is a Base Station in Telecommunications?](#)

Discover the role and functionality of a base station in telecommunications networks. Learn how these critical components manage communication between mobile devices and the network, ...

[10 Best Ham Radio Base Station For Long Range ...](#)

In this article, we have described details of different Ham radio base station that will help you to select the best one based on your needs.



Contact Us

For catalog requests, pricing, or partnerships, please visit:
<https://www.talbert.co.za>