

# **Base station communication equipment connection small**





## Overview

---

How does a small cell base station communicate with a core network?

The small cell base station communicates with the core network over a high-speed backhaul connection. Core network: The core network manages the overall operation of the small cell network, including authentication, authorization, and routing of user traffic.

What is a small cell cellular base station?

A small cell is another type of cellular base station that is physically small -- around the size of a pizza box -- and transmits radio signals. The goal of small cells is to boost wireless network connectivity in specific areas, as small cells can enable mmWave frequencies with high-speed broadband connectivity.

What is a base station in a cellular network?

A base station, also known as a cell site or cell tower, is an integral part of a cellular network. It serves as a central hub for communication between mobile devices and the network infrastructure. Here is a simplified explanation of how a base station works: 1.

What is a pico cell base station?

A Pico cell base station is a small wireless tower that provides improved phone and Internet services to local areas such as homes or small offices; More specifically for specific rooms. It is a very small, low-power station that works like a personal signal booster that improves call and Internet quality in limited space.

What is a base station?

What is Base Station?

A base station represents an access point for a wireless device to communicate within its coverage area. It usually connects the device to other



networks or devices through a dedicated high bandwidth wire of fiber optic connection. Base stations typically have a transceiver, capable of sending and receiving wireless signals;.

Why are base stations important for modern telecommunications?

In summary, base stations are critical for modern telecommunications as they serve as the link between mobile devices and the extensive network infrastructure that spans the globe. The strategic deployment and ongoing improvement of these stations are essential for maintaining global connectivity.



## Base station communication equipment connection small

---

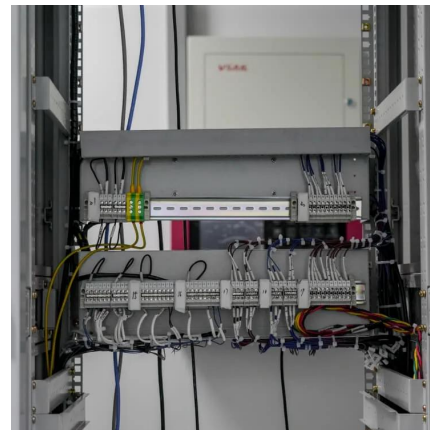


### Base Stations

Backhaul Connection: The backhaul connection links the base station to the core network in the mobile communication system. It provides for the interchange of data between ...

### BS (Base Station)

A base station (BS) is a key component of modern wireless communication networks, providing the interface between wireless devices ...



### Small Cell Networks: Overview of High-Level ...

The small cell base station communicates with the core network over a high-speed backhaul connection. Core network: The core network ...

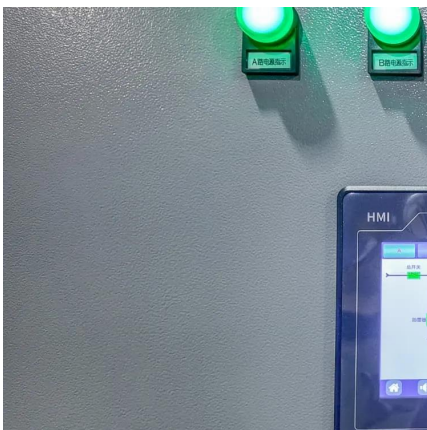


### Base Transceiver Station (BTS) , PPTX

A Base Transceiver Station (BTS) facilitates wireless communication between user equipment and networks. It encodes, encrypts,



and modulates RF signals that are transmitted from ...

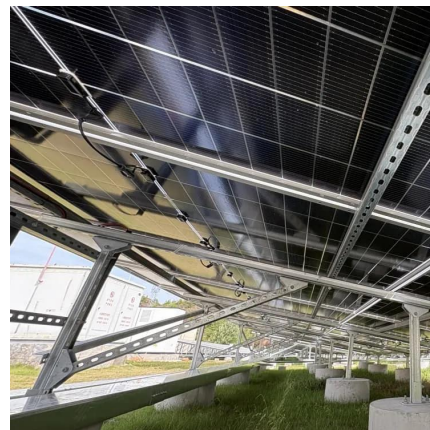


### [What Are Base Station Antennas? Complete Guide](#)

Base station antennas play a fundamental role in wireless communication systems by enabling the signal transmission and receive between the base stations and mobile devices.

### [What Are Base Station Antennas? Complete Guide](#)

Base station antennas play a fundamental role in wireless communication systems by enabling the signal transmission and receive ...



### **What is Small Cell Technology?**

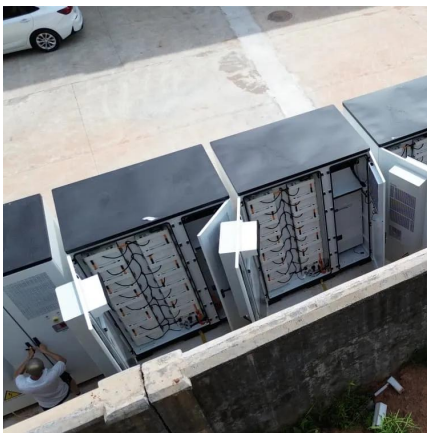
Small cell technology refers to a type of wireless communication infrastructure that is designed to enhance network capacity and coverage in areas with high user density or ...





## Base Station System Structure

2 Base Station Background The intent of this section is to explore the role of base stations in communications systems, and to develop a reference model that can be used to describe and ...



## Small Cell Networks: Overview of High-Level Architecture and ...

The small cell base station communicates with the core network over a high-speed backhaul connection. Core network: The core network manages the overall operation of the ...

## Small Cell Solutions & Applications , Cellular Base Station Products

A small cell is a cellular base station that transmits and receives defined RF signals with low power in a compact solution. Ideal for densely populated environments like venues, residential ...



## What Is A Base Station?

A base station is an integral component of wireless communication networks, serving as a central point that manages the transmission and reception of signals between ...



## Small Cells, Big Impact: Designing Power Solutions for 5G ...

What are small cells? Telecommunications equipment manufacturers have taken traditional macro radio designs and shrunk them down into what's called a small cell. Small cells are smaller ...



## [RRH vs. Traditional Base Stations: A Comparison](#)

This article explores the differences between Remote Radio Head (RRH) based base stations and traditional base station architectures, commonly used in cellular communication systems. With ...

## [Cellular Networks, Base Stations, and 5G RAN](#)

A user's mobile telephone communicates through the air with an base station antenna, which in turn links to the central exchange of the ...





## [Small cell base station design resources , TI](#)

33 rows· View the TI Small cell base station block diagram, product recommendations, ...

## **Best 2 Meter Ham Radio Base Station Setup Guide ...**

Discover the best 2 meter ham radio base station setups for beginners in 2025! Learn top transceivers, starter kits, and easy setup tips to ...



## **Cell Phone Towers -- EITC**

- Cell Site (Cellular Base Station or Cell Tower) A cell site, cell tower, or cellular base station is a cellular-enabled mobile device site where antennae and electronic ...

## [Base Transceiver Station BTS Technology](#)

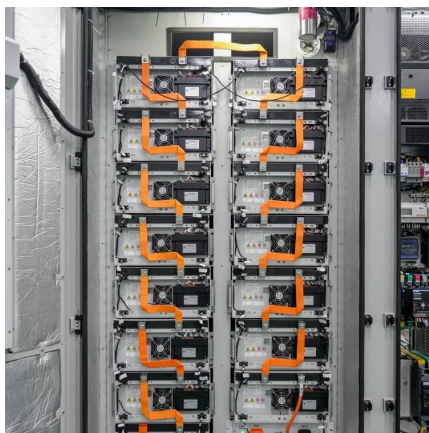
Base Transceiver Station (BTS) is the equipment which facilitates the wireless communication between user equipments and the network.





### [Small cell base station design resources , TI](#)

View the TI Small cell base station block diagram, product recommendations, reference designs and start designing.



## Cellular Base Stations

Two are used on the receive side so that the base station can compare signals and select the best antenna for each user within the cell. This ...



## Macrocell vs. Small Cell vs. Femtocell: A 5G introduction

Small cell A small cell is another type of cellular base station that is physically small -- around the size of a pizza box -- and transmits radio signals. The goal of small cells is ...





## Base Station Transmits: 5G

The goal of Base Station Transmits is to discuss challenges faced by engineers and technicians who must optimize today's wireless networks. ...



## What Is A Base Station?

A base station is an integral component of wireless communication networks, serving as a central point that manages the transmission and ...

## Breaking Down Base Stations - A Guide to Cellular Sites

Communications Equipment The primary function of a tower is to transmit the data that makes up our communications networks. In order to ...



## Base Stations

Backhaul Connection: The backhaul connection links the base station to the core network in the mobile communication system. It provides for ...



### **small cell base station**

A small cell base station is a type of wireless communication infrastructure that is designed to enhance network capacity and coverage, particularly in areas with high user ...



### Understanding Telecommunication Towers

Radio equipment and communications equipment: Telecommunication towers house various radio equipment and communications equipment, including transceivers, ...

### VHF Base Stations for Long-Range Communication

Discover Belfone's cutting-edge VHF base stations. Enhance long-range communication with durable, reliable, and customizable solutions for industries, emergency services, and outdoor ...





## [Radio Base Stations for Secure Communication](#)

Discover BelFone's advanced radio base stations designed for reliable, scalable, and secure communication. Perfect for public safety, industrial, and enterprise use, BelFone's solutions ...

## Contact Us

---

For catalog requests, pricing, or partnerships, please visit:  
<https://www.talbert.co.za>