

Base station battery communication connection principle





Overview

What are the components of a base station?

Power Supply: The power source provides the electrical energy to base station elements. It often features auxiliary power supply mechanisms that guarantee operation in case of lost or interrupted electricity, during blackouts. **Baseband Processor:** The baseband processor is responsible for the processing of the digital signals.

What is a BLVD threshold for a communication base station?

Assume the rated voltage of a communication base station's battery is 48V, with the BLVD threshold set to 42V. When the mains power fails and the battery starts supplying power, the power system continuously monitors the battery voltage through the voltage detection circuit.

Why are base stations important in cellular communication?

Base stations are important in the cellular communication as it facilitate seamless communication between mobile devices and the network communication. The demand for efficient data transmission are increased as we are advancing towards new technologies such as 5G and other data intensive applications.

What is a base station power cabinet?

The base station power cabinet is a key equipment ensuring continuous power supply to base station devices, with LLVD (Load Low Voltage Disconnect) and BLVD (Battery Low Voltage Disconnect) being two important protection mechanisms in the power cabinet.

How does a base station work?

It usually connects the device to other networks or devices through a dedicated high bandwidth wire of fiber optic connection. Base stations typically have a transceiver, capable of sending and receiving wireless signals;



Otherwise if they only send the trailer it will be considered a transmitter or broadcast point only.

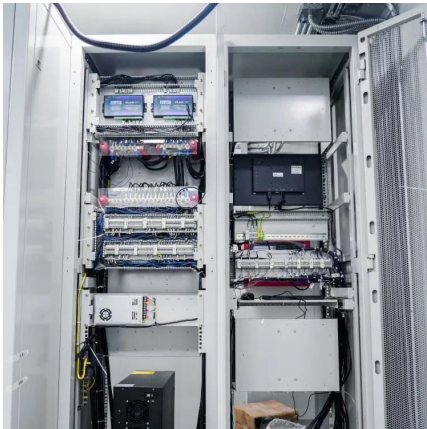
What are the properties of a base station?

Here are some essential properties: Capacity: Capacity of a base station is its capability to handle a given number of simultaneous connections or users.

Coverage Area: The coverage area is a base station is that geographical area within which mobile devices can maintain a stable connection with the base station.



Base station battery communication connection principle

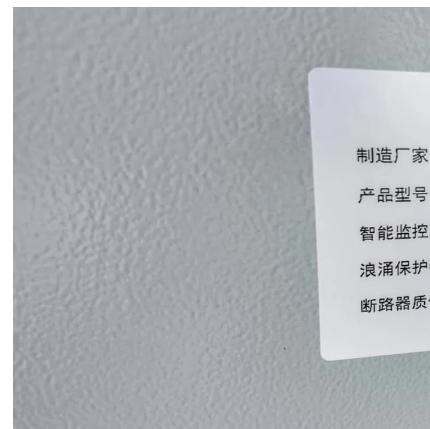


Types of Base Stations

Base stations are one of the widely used components in the field of wireless communication and networks. It is an access point or base point of a particular area for ...

Selection and maintenance of batteries for communication base stations

This article focuses on the engineering application of the battery in the power supply system of the communication base station, and focuses on the selection, installation and maintenance of the ...



Wireless Sensor Network (WSN)

Physical Layer: This layer connects sensor nodes to the base station using technologies like radio waves, infrared, or Bluetooth. It ensures ...

Base Station Telecommunications Battery: Indispensable For

Base station telecommunications batteries are the heart of the base station and the key to



maintaining the operation of the communication network. It provides the required power for ...



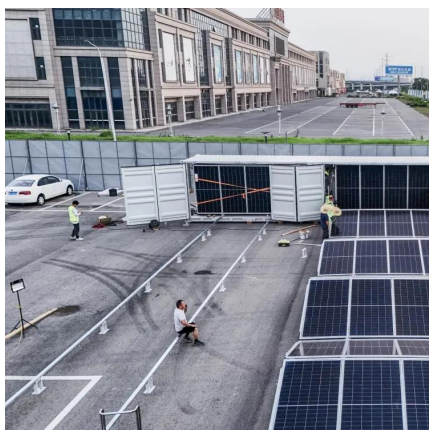
Base Stations

Backhaul Connection: The backhaul connection links the base station to the core network in the mobile communication system. It provides for the interchange of data between ...



Battery technology for communication base stations

In order to ensure the reliability of communication, 5G base stations are usually equipped with lithium iron phosphate cascade batteries with high energy density and high charge and ...



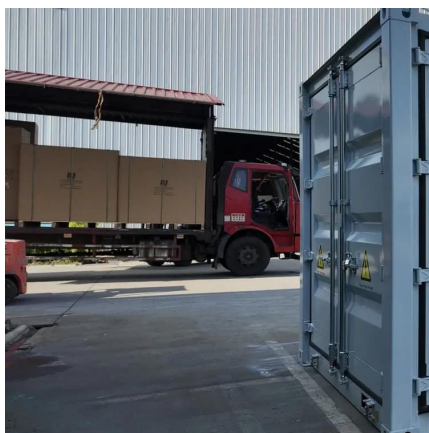
Working principle of llvd and blvd in base station power cabinet

IntroductionIn modern communication networks, base stations, as core infrastructure, are crucial for stable operation. The base station power cabinet is a key equipment ensuring continuous ...



Understanding Base Station Controller Architecture: A ...

It orchestrates the activities of base stations, managing the allocation of resources, handovers, and call set-ups, thus the mobile switching center and ensuring seamless ...



Communication base station

Communication base station The tower backup battery plays a vital role in the communication base station, especially in the power guarantee and system ...

[What Are Base Station Antennas? Complete Guide](#)

In modern telecommunications systems, the base station antenna stands out as an undeniable and crucial component to facilitate our daily ...



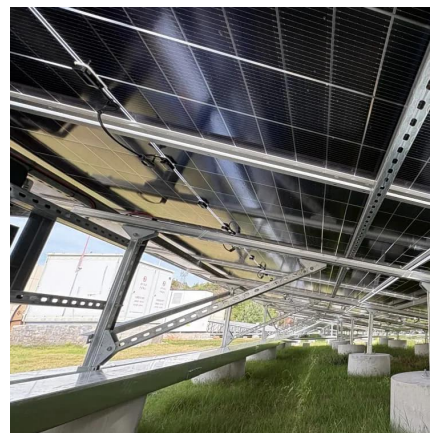
What is a GNSS base station?

A GNSS base station is a stationary receiver set up at a precisely known location that collects satellite signals to calculate errors in GNSS data. ...



UPS Batteries in Telecom Base Stations - leagend

In today's always-connected world, telecom base stations are the backbone of communication networks, ensuring seamless connectivity for ...



LLVD & BLVD in Base Station Power Cabinets

This blog provides a detailed analysis of the definitions, purposes, functions, protection mechanisms, electrical principles, and application scenarios of LLVD and BLVD, and ...

Types and Applications of Mobile Communication ...

Mobile communication base station is a form of radio station, which refers to a radio transceiver station that transmits information between mobile ...



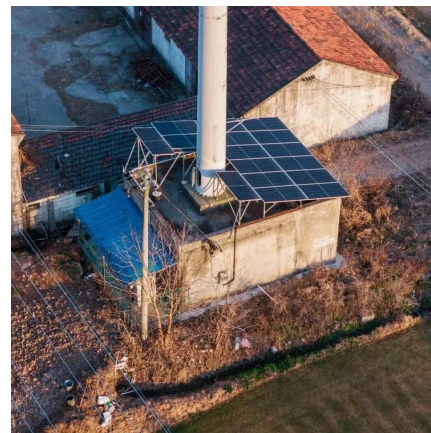


UPS Batteries in Telecom Base Stations - leagend

In today's always-connected world, telecom base stations are the backbone of communication networks, ensuring seamless connectivity for mobile phones, data services, ...

Base Station System Structure

The intent of this section is to explore the role of base stations in communications systems, and to develop a reference model that can be used to describe and compare base station software ...



5G Base Station Architecture

The Base Station cabinet is a single unit that includes both the RF functions and the baseband processing functions. The antenna subsystem connects with the ...

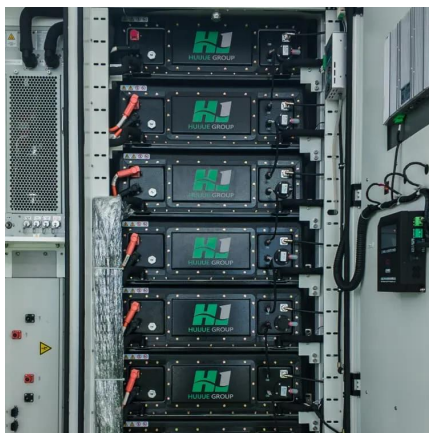
How does the base station battery communicate with the power ...

By regulating the charging and discharging behavior of the virtual battery of the base station in such a way that the base station avoids the peak period of power consumption and staggered ...



Base Stations

Backhaul Connection: The backhaul connection links the base station to the core network in the mobile communication system. It provides for ...



Telecommunication base station system working principle and ...

The system output load is powered by the battery to maintain the normal operation of communication equipment. When the battery is discharged for a period of time and meets ...



[LLVD & BLVD in Base Station Power Cabinets](#)

This blog provides a detailed analysis of the definitions, purposes, functions, protection mechanisms, electrical principles, and application scenarios of ...





Energy-Efficient Base Stations , part of Green Communications

With the explosion of mobile Internet applications and the subsequent exponential increase of wireless data traffic, the energy consumption of cellular networks has rapidly caught the ...



Selection and maintenance of batteries for communication base ...

This article focuses on the engineering application of the battery in the power supply system of the communication base station, and focuses on the selection, installation and maintenance of the ...

CN111916614A

The invention discloses a communication base station battery thermal management system based on phase change materials, comprising a battery pack, a power box, a refrigeration system ...



Contact Us

For catalog requests, pricing, or partnerships, please visit:
<https://www.talbert.co.za>