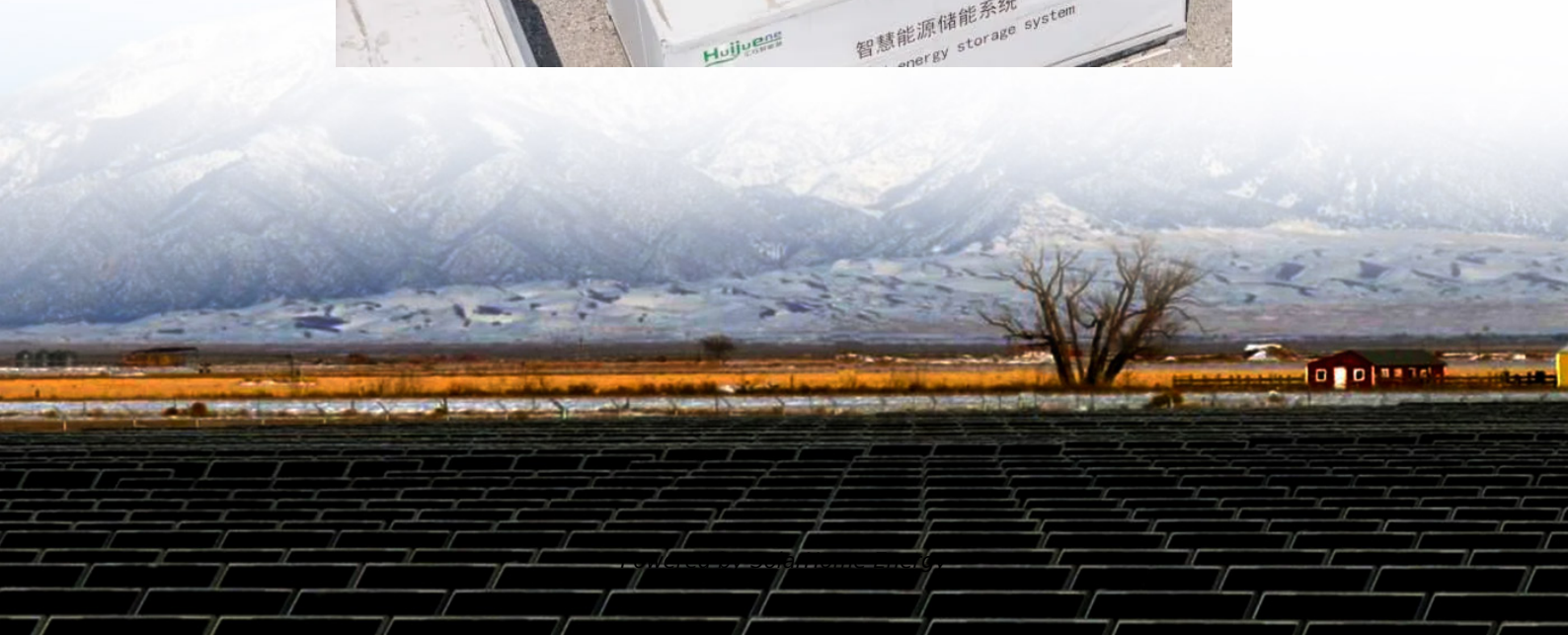


Base station backup power supply charging power





Overview

What is a battery backup power station?

A battery backup power station is the perfect disaster prep solution, ensuring that you always have access to electricity and the ability to keep your devices charged. Goal Zero offers a wide variety of options to meet your needs.

Which battery is best for telecom base station backup power?

Among various battery technologies, Lithium Iron Phosphate (LiFePO₄) batteries stand out as the ideal choice for telecom base station backup power due to their high safety, long lifespan, and excellent thermal stability.

Why do cellular base stations have backup batteries?

[.] Cellular base stations (BSs) are equipped with backup batteries to obtain the uninterruptible power supply (UPS) and maintain the power supply reliability. While maintaining the reliability, the backup batteries of 5G BSs have some spare capacity over time due to the traffic-sensitive characteristic of 5G BS electricity load.

What makes a telecom battery pack compatible with a base station?

Compatibility and Installation Voltage Compatibility: 48V is the standard voltage for telecom base stations, so the battery pack's output voltage must align with base station equipment requirements. Modular Design: A modular structure simplifies installation, maintenance, and scalability.

Why is backup power important in a 5G base station?

With the rapid expansion of 5G networks and the continuous upgrade of global communication infrastructure, the reliability and stability of telecom base stations have become critical. As the core nodes of communication networks, the performance of a base station's backup power system directly impacts network continuity and service quality.



How do you protect a telecom base station?

Backup power systems in telecom base stations often operate for extended periods, making thermal management critical. Key suggestions include:

Cooling System: Install fans or heat sinks inside the battery pack to ensure efficient heat dissipation.



Base station backup power supply charging power



5G Micro Base Station Power Supply - Compact ...

With over 3,000 charge cycles, this compact power solution is engineered for long-term value and field durability. Compatible with micro cell base stations, ...

Battery Backup to base station rig? : r/amateurradio

You can safely charge / float a deep cycle SLA by just connecting it straight to a 13.8VDC power supply - assuming it is fully charged. If you have an AGM battery, you can charge it simply by ...



5G Micro Base Station Power Supply - Compact Lithium Battery Backup

With over 3,000 charge cycles, this compact power solution is engineered for long-term value and field durability. Compatible with micro cell base stations, this lithium battery supports the ...

VR Base Station 2.0 AC Power Wall Charger Supply ...

About this item VR Base Station2.0 AC Power Supply Adapter Light House Wall Charger 5m US



Plug Charging Cable Cord Set for Valve Index



[BioLite BaseCharge 600+ 622 Wh Portable Power ...](#)

A portable power station upgraded with faster recharging, higher solar capacity, and a new low price. Power laptops, tablets, phones, cameras, lights, routers ...

The Best Portable Power Stations

What is the difference between a power bank and a portable power station? Size is the main difference between the best power banks and the ...



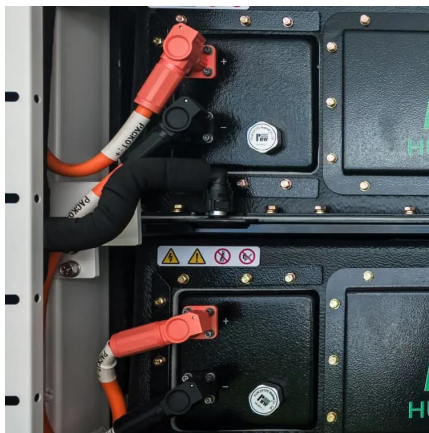
[UPS Batteries in Telecom Base Stations - leagend](#)

Telecom base stations are typically located in remote areas or urban locations with fluctuating power quality. While the grid supplies the ...



Power supply for base station.

I want to power a 25 watt radio I already have a power supply for my radio . I just want a back up supply that way I have a way to run my radio when the electric goes out. I ...



Battery Backup to base station rig? : r/amateurradio

You can safely charge / float a deep cycle SLA by just connecting it straight to a 13.8VDC power supply - assuming it is fully charged. If you have an AGM battery, you can ...

Communication Base Station Backup Battery

When natural disasters cut off power grids, when extreme weather threatens power supply safety, our communication backup power system with intelligent charge/discharge management and ...



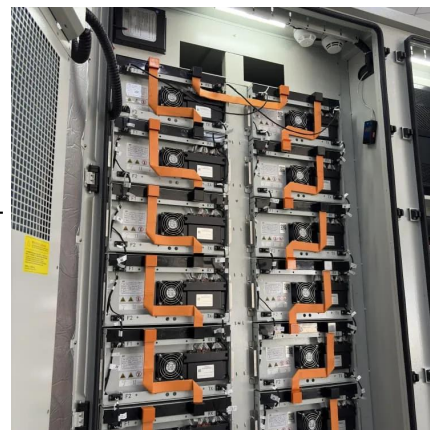
ANTENNA SPECIFICATIONS

Base Station Power Supply Nova Code:
POW-107BBTMK1 13.8V DC Base Station Power
Supply Designed for Two Way Radio Base Station
use NRCS Certificate



Power-Pac with Battery Back-Up , 12V DC , 5 Amps , 7 Amp ...

Discover the 48V 100Ah LiFePO4 battery pack for telecom base stations: safe, long-lasting, and eco-friendly. Optimize reliability with our ...



Telecom Base Station Backup Power Solution: Design Guide for ...

Discover the 48V 100Ah LiFePO4 battery pack for telecom base stations: safe, long-lasting, and eco-friendly. Optimize reliability with our design guide.

(PDF) Dispatching strategy of base station backup power supply

With the mass construction of 5G base stations, the backup batteries of base stations remain idle for most of the time. It is necessary to explore these massive 5G base ...



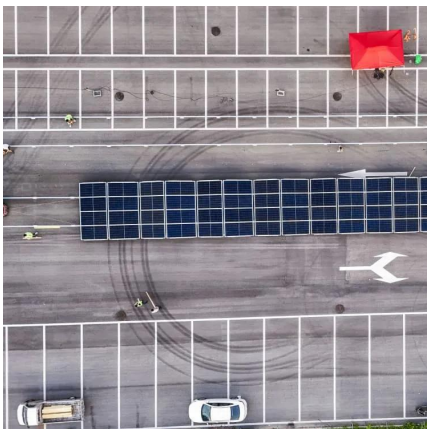


The Best Portable Power Stations of 2025, Tested ...

Find the best portable power stations for your backcountry and frontcountry plans, based on extensive, hands-on testing.

What Powers Telecom Base Stations During Outages?

Telecom batteries for base stations are backup power systems using valve-regulated lead-acid (VRLA) or lithium-ion batteries. They ensure uninterrupted connectivity ...



Power Supply Box vs. Battery for base setup

Eliminating the solar component entirely, this battery and charger would seem to me as a great solution to completely replace power supply boxes. The cost is comparable if ...

Power Supply Solutions for Wireless Base Stations Applications

In particular, MORNSUN can provide specific power supply solutions for optical communication and 5G base stations applications. In particular, MORNSUN's VCB/VCF series of isolated 3 ...



Power Base Station

Base station power refers to the output power level of base stations, which is defined by specific maximum limits (24 dBm for Local Area base stations and 20 dBm for Home base stations) ...



NPP POWER - Clean Energy Safe Power

NPP Lithium batteries are commonly used in UPS Backup, Marine, Telecom, Electric vehicles, Golf Cart applications, Outdoor power supply, PV energy storage, etc. In recent years, along ...



Arlo Base Station: Does It Have Battery Backup For Home ...

The Arlo base station includes an optional battery backup. This feature keeps your Arlo Home Security System connected during power or internet outages for up to 12 hours. It ...





Ring Power Pack

Keep your home security ready to protect, even if the power goes out, with Ring Power Pack - the stackable backup battery for Alarm Pro and eero 6 ...



Best Backup Power Supply for Base Units

Easy way to do it is to buy a 12 volt power supply with a battery revert function. Then add a 12 volt battery with enough ampere/hours to run your radios. Might be as simple ...

Battery as a primary power source in a base station ...

Unfortunately you wont be able to use the power supply as a charger as you need a few volts over 12 to charge a battery. Edit: You could use the Prima13's ...



Power-Pac with Battery Back-Up , 12V DC , 5 Amps , 7 Amp ...

The Power-Pac's highly regulated, low ripple 10 amp output powers radios and other sensitive communications equipment without causing RF or audio interference. At the same time it float ...



[Amazon : Vive Base Station Power Adapter](#)

VR Base Station 2.0 AC Power Wall Charger
Supply Adapter Light House 5m Charging Cable
Cord Set for Valve Index 13 \$3997 FREE delivery
Mon, Jul 28



[Best Portable Power Stations for 2025 - Autoweek](#)

From compact 512-Wh units to massive 2048-Wh ones with optional expansion batteries large enough to power your home, we've ...



Contact Us

For catalog requests, pricing, or partnerships, please visit:
<https://www.talbert.co.za>