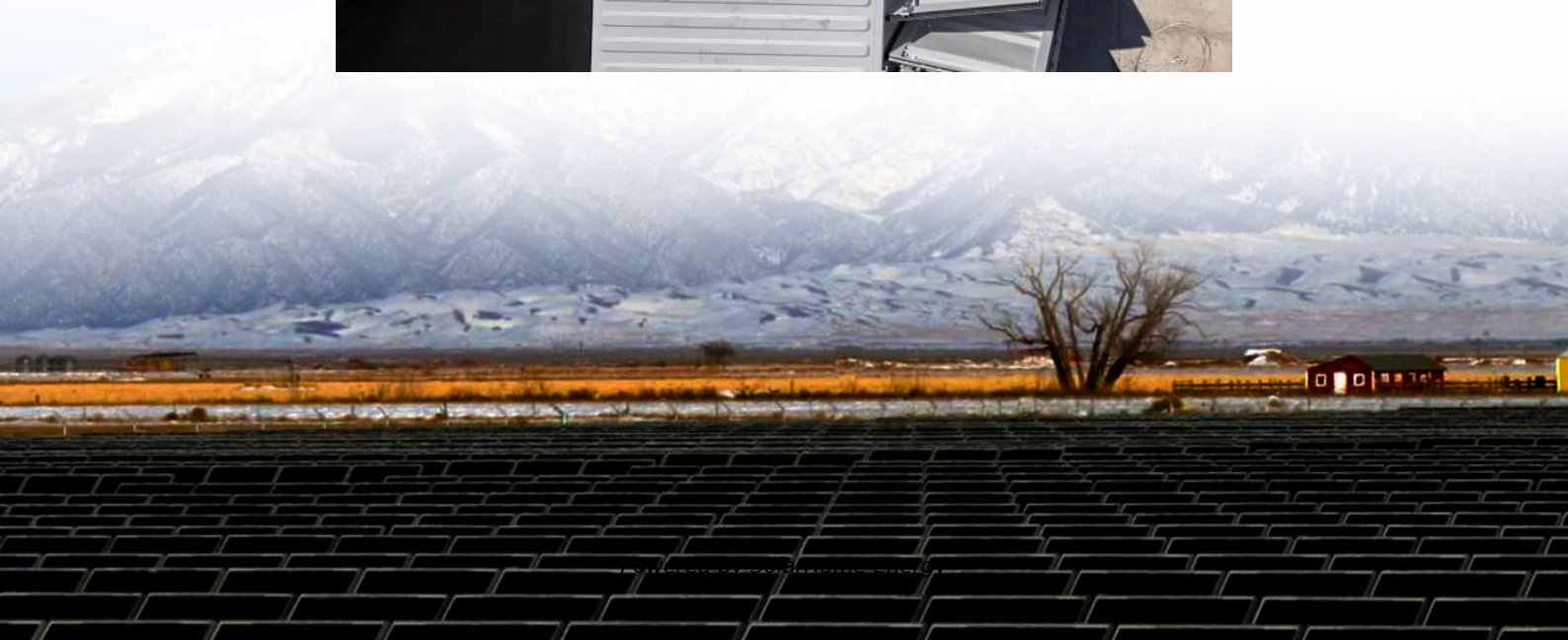


# **Barbados Telecom Base Station Module**





## Overview

---

What is a baseband unit (BBU)?

The baseband unit (BBU) is a crucial component in mobile base stations, handling tasks like signal processing, resource allocation, and protocol management to ensure efficient communication between mobile devices and networks. It also ensures security through encryption and manages interference and network operations.

What is a mobile base station?

A mobile base station, also called a base transceiver station (BTS), is a fixed radio transceiver in any mobile communication network or wide area network (WAN). The base station connects mobile devices to the network and routes them to other terminals in the network or to the core network of a mobile operator. [Read more Explore Mobile base.](#)

Are base station controllers the future of telecommunications?

The integration of base station controllers (BSCs) with 5G networks represents a significant future trend in telecommunications. As 5G technology promises higher data rates, lower latency, and increased connectivity, BSCs must evolve to support these advancements.

What are the hardware components of a base station controller?

The hardware components of a base station controller (BSC) are crucial for its operation. Typically, a BSC includes several processors, memory units, and interface modules. The processors handle the computational tasks, such as signal processing and resource management.

What is a base transceiver station (BSC)?

The BSC controls several base transceiver stations (BTS), which are responsible for transmitting and receiving radio signals from mobile devices. By coordinating these BTS units, the BSC ensures seamless handovers when a



user moves from one cell to another, maintaining call quality and data connectivity.

What is a base station controller?

Base station controllers (BSCs) significantly enhance network efficiency by optimising the use of available resources. They manage the allocation of radio frequencies, ensuring minimal interference and maximising coverage. By dynamically adjusting power levels, the BSC helps maintain optimal signal quality while conserving energy.



## Barbados Telecom Base Station Module

---



### [Barbados LTE Base Station System Market \(2025-2031\)](#)

Our analysts track relevant industries related to the Barbados LTE Base Station System Market, allowing our clients with actionable intelligence and reliable forecasts tailored to emerging ...

### [base transceiver station components](#)

A Base Transceiver Station (BTS) is a fundamental component of a mobile cellular network, responsible for establishing a communication link with mobile devices in its coverage ...



### **Narada HELiON NPFC 48V LFP Batteries , Telecom ...**

Narada HELiON(TM) NPFC series 48V LFP battery modules are ideally suited for telecom base station, OSP, and renewable energy applications.

### **Telecom base station case sharing**

The 50-unit ESB rectifier system is specially customized for telecom base station systems in Iraq, providing essential power to the equipment



...



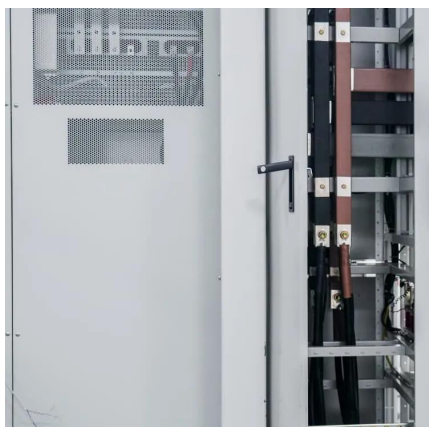
## Quick guide: components for 5G base stations and antennas

Base stations A 5G network base-station connects other wireless devices to a central hub. A look at 5G base-station architecture includes various equipment, such as a 5G ...



### base transceiver station components

A Base Transceiver Station (BTS) is a fundamental component of a mobile cellular network, responsible for establishing a communication link ...



## 5G Base Band Unit (BBU)

The 5G Baseband Unit is the most critical component of the 5G Base Station. As GTENT, we produce stronger and more flexible 5G Baseband Units than competitive, standard products ...





## Telecommunications Service

The Mission of the Telecommunications Unit is to facilitate a competitive, fully liberalized telecommunications sector while achieving Government's vision of making Barbados a centre ...



## NB Node with Base station

The base station typically consists of an NB-IoT module, a microcontroller, and a backhaul interface. The NB-IoT module is responsible for providing connectivity to the NB ...

## Base transceiver station

The BCF is implemented as a discrete unit or even incorporated in a TRX in compact base stations. The BCF provides an operations and maintenance (O& M) connection to the network ...



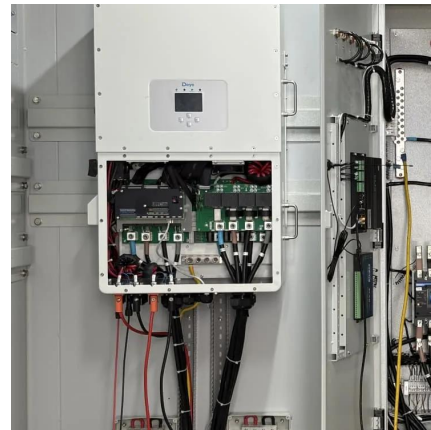
## ???? , Application

???????????? (AAS) ????????? (RF)  
??, ??????????????:  
???? AAS???????? ...



## Murata-Base-station-app-guide

Base station thermal management An inevitable consequence of mMIMO and beamforming - and the consequence of moving hardware from the large base-station 'shed' to smaller assemblies ...



## What Powers Telecom Base Stations During Outages?

Telecom batteries for base stations are backup power systems using valve-regulated lead-acid (VRLA) or lithium-ion batteries. They ensure uninterrupted connectivity ...

## BBU (Baseband unit)

Our analysts track relevant industries related to the Barbados LTE Base Station System Market, allowing our clients with actionable intelligence and reliable forecasts tailored to emerging ...





## Technical Requirements and Market Prospects of 5G Base Station ...

With the rapid development of 5G communication technology, global telecom operators are actively advancing 5G network construction. As a core component supporting ...

### Base Station System Structure

2 Base Station Background The intent of this section is to explore the role of base stations in communications systems, and to develop a reference model that can be used to describe and ...



### Baseband Unit (BBU)

The baseband unit (BBU) is a crucial component in mobile base stations, handling tasks like signal processing, resource allocation, and protocol management to ensure efficient ...

### Mobile base station

Explore STMicroelectronics' mobile base station solutions, enhancing connectivity and performance for telecom networks.



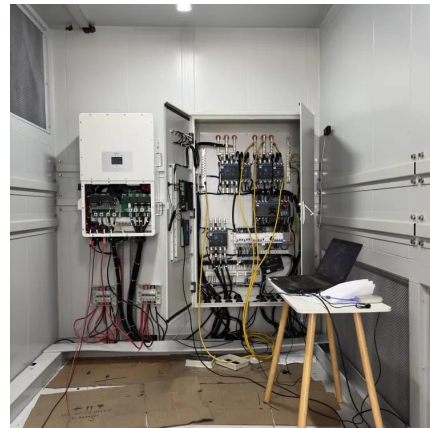


### [BBU-Baseband Unit-In Telecom , PDF , Radio](#)

The BBU, along with the RRU (Radio Remote Unit), forms the BTS (Base Transceiver Station). The BBU is connected to the RRU via CPRI ...

## **Base Station Controller**

At its core, the BSS consists of two main components: the Base Station Controller (BSC), which serves as the station controller and central hub for managing resources, and the ...



## **BBU (Baseband unit)**

It is responsible for handling the digital processing of information between a Base Station (BS) and a mobile device, thereby enabling voice and data transmissions. This article ...



## UPS Batteries in Telecom Base Stations - leagend

This article delves deep into the role, technology, maintenance, and future trends of UPS batteries in telecom base stations, offering a detailed ...



## **China Telecom Base Station, Competitive Price Telecom Base Station**

From making a phone call in a busy city to streaming videos in remote villages, the ability to stay connected relies on one critical piece of infrastructure: the telecom base station. Often hidden ...



## **Exide Technologies launches Solition Telecom: A pioneering ...**

Smart Battery Management System and safest iron-phosphate cell chemistry create a powerful, reliable, and cost-effective solution Exide Technologies is proud to introduce ...



## **15S 48V 100A Master BMS For Telecom Base Station ...**

High quality 15S 48V 100A Master BMS For Telecom Base Station Battery Energy Storage System from China, China's leading product market 100A ...



## **BBU-Baseband Unit-In Telecom , PDF , Radio , Modulation**

The BBU, along with the RRU (Radio Remote Unit), forms the BTS (Base Transceiver Station). The BBU is connected to the RRU via CPRI (Common Public Radio ...



## **Contact Us**

For catalog requests, pricing, or partnerships, please visit:  
<https://www.talbert.co.za>