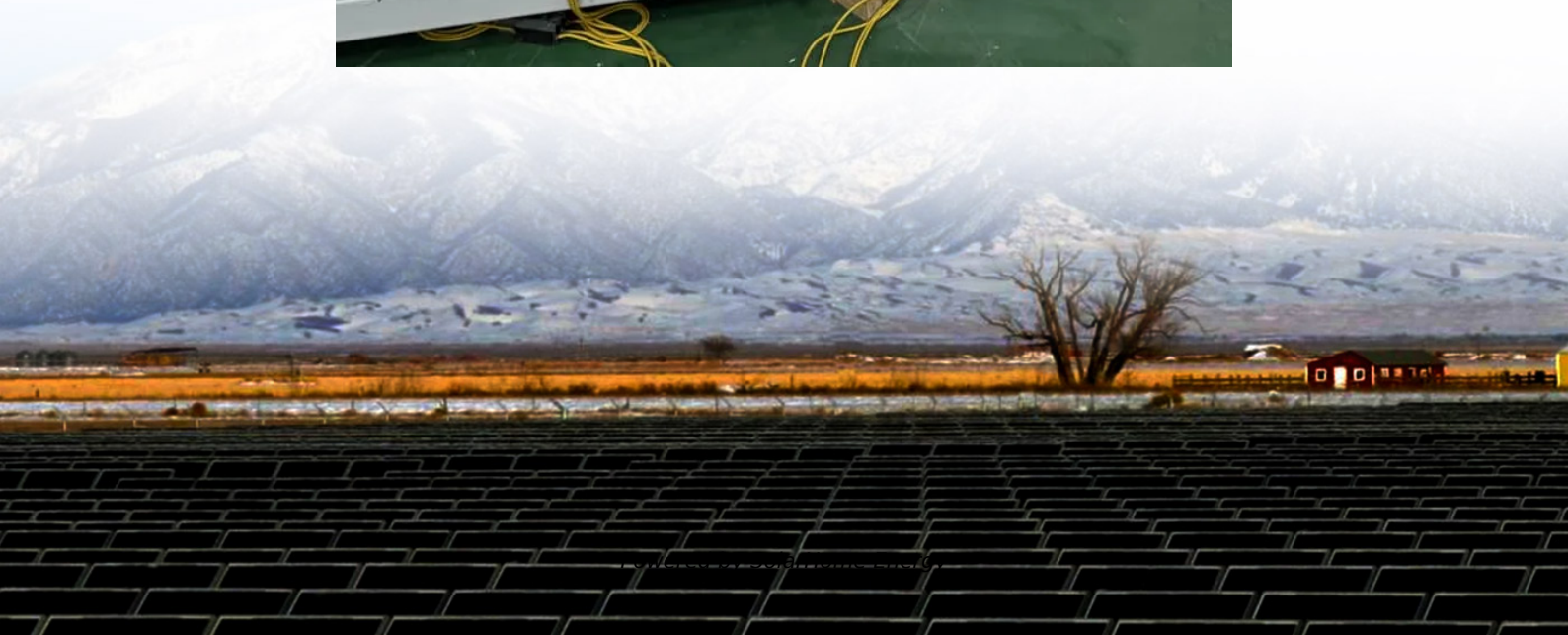


# **BMS lithium battery protection remote**





## Overview

---

What is a lithium battery management system (BMS)?

Many people are familiar with a Battery Management System (BMS), which should be installed with every lithium battery. A BMS monitors the voltages of the individual lithium cells inside a battery and has the ability to shut everything down in an emergency. A BBMS, on the other hand regulates the charging of the lithium batteries.

Are lithium-ion batteries safe to operate without BMS protection?

A: Operating lithium-ion batteries without proper BMS protection is extremely dangerous and not recommended. While basic protection circuits exist, they lack the comprehensive monitoring and management capabilities needed for safe operation.

Why should you use a BMS for a lithium-ion battery?

A properly designed BMS for lithium-ion batteries is not optional—it's essential for safe, reliable, and efficient operation. The technology protects valuable battery assets, ensures user safety, and maximizes performance throughout the battery's operational life.

Do batteries need BMS protection?

While basic protection circuits exist, they lack the comprehensive monitoring and management capabilities needed for safe operation. Even small consumer batteries benefit from BMS protection against overcharge, over-discharge, and thermal issues.

How accurate is a battery management system (BMS)?

The BMS employs multiple algorithms including coulomb counting, voltage-based estimation, and advanced techniques like Kalman filtering to provide precise charge level information. SOC accuracy directly impacts user experience and battery protection. Overestimation can lead to over-discharge,



while underestimation reduces usable capacity.

How does a BMS protect a cell?

The BMS immediately stops charging current to prevent cell damage and potential safety hazards. Over-discharge protection prevents cells from dropping below minimum voltage thresholds, usually 2.5-3.0V per cell. Deep discharge can cause permanent capacity loss and create safety risks through copper dendrite formation on the anode.



## BMS lithium battery protection remote

---



### 8s Smart BMS: Advanced Battery Management System with ...

Discover the advanced 8s smart BMS featuring precise cell balancing, comprehensive protection systems, and intelligent monitoring capabilities for optimal battery performance and longevity.

### BMS for lithium batteries: Optimized performance

A BMS is an electronic board whose function is to manage and secure the operation of lithium-ion batteries, whatever their electrochemical ...



### BatteryProtect 12/24V

12/24V auto ranging. The BatteryProtect automatically detects system voltage one time only (can be re-triggered - see section Programming table [12]). A special setting for Lithium batteries. ...

### Orion Battery Management System O2 Lithium Ion Kit ...

Looking for a pre-built, liquid-cooled, battery pack with a BMS already ...



### [DALY Smart BMS 4S-16S 40A-500A with WiFi...](#)

About this item Enhanced Battery Safety: Daly 48V BMS 16S offers protection against overcharging, overdischarging, overcurrent, short circuits ...



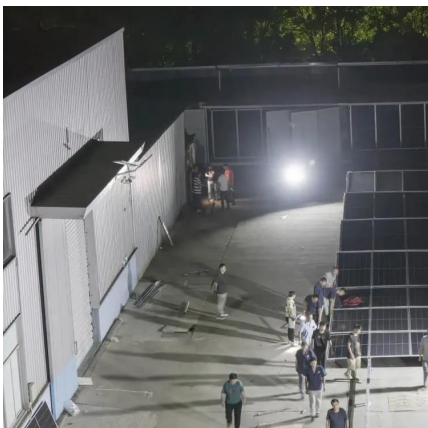
### **PACE BMS: Revolutionizing Intelligent Energy Management**

With a focus on enhancing safety, extending battery life, and optimizing energy utilization, PACE BMS is poised to capture significant market share in the growing lithium-ion ...



### **Can You Add an External BMS to Lithium Batteries? A Complete ...**

In this guide, we'll explore whether you can add an external BMS to your lithium battery, how it works, and why it might be a game-changer for your energy system.





## 7S to 24S Li ion or Lifepo4 Smart Bluetooth BMS with GPS,4G ...

This is a Smart protection board with Bluetooth, GPS,4G/2G,RS485,CAN Communication for battery remote controlling purpose specially battery exchange of Vehicle battery or Power ...



## BatteryProtect 48V 100A

A special setting for Lithium batteries. This feature allows external control from a BMS like the VE.Bus BMS or Lynx Smart BMS. If the load disconnect output of a BMS is connected to the ...

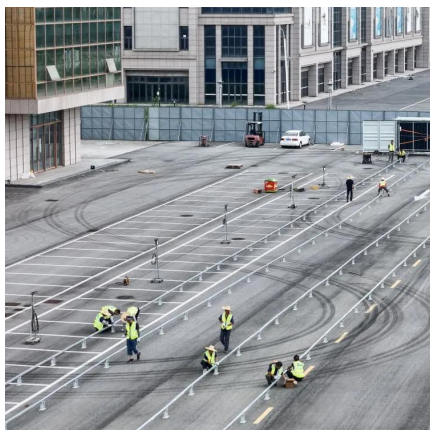
## 14 Best 4S Lithium BMS: Top Choices for Reliable Battery ...

Boost your 4S lithium battery's performance with the top BMS options for 2025--discover which one suits your needs and why they stand out.



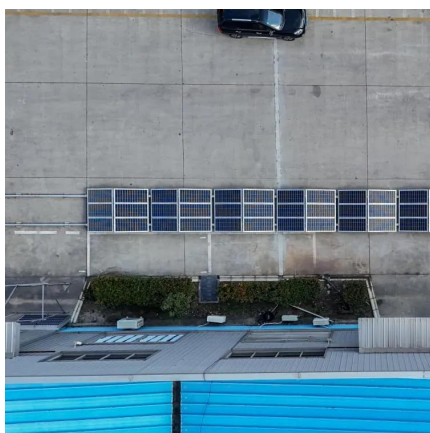
## [Technology: Lithium Battery Management System](#)

Advanced Battery Management System for Aviation applications. BMS protections include : over charging, over current, over discharge, short circuit, ...



### Remote controlling BMS with Monitoring functions

Available for the various types of battery such as :Lifepo4 battery, LiMno2 Battery,other Lithium battery. Battery protection parameters can be changed in according to demand

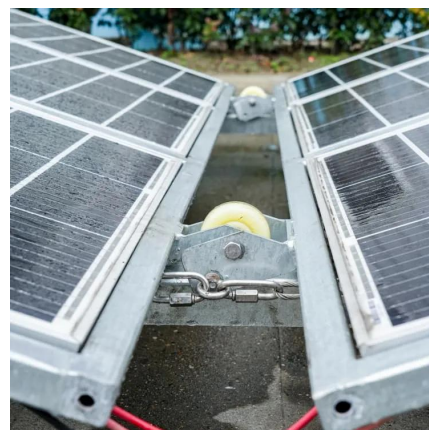


### 3. System design and BMS selection guide

This chapter describes things to consider on how the battery interacts with the BMS and how the BMS interacts with loads and chargers to keep the battery protected. This information is ...

### **DALY Smart BMS 4S 12V 100A with WiFi Module and CAN 485 ...**

Enhanced Battery Safety: Daly 12V BMS 4S offers protection against overcharging, overdischarging, overcurrent, short circuits and extreme temperature, ensuring the safety and ...





### **Redodo Smart Bluetooth Lithium Battery, Group 31 12V 100Ah ...**

After connecting to the lithium battery via the phone's APP, important information such as battery voltage, current, Power and battery capacity can be read out at any time. ...

### **Battery Remote Monitoring Solution , Remote BMS - leagend**

Through data analysis, leagend battery remote monitoring solution provides key features such as battery state of health (SoH), lifespan prediction and failure warning to help customers ...



### **Battery Remote Monitoring Solution , Remote BMS - ...**

Through data analysis, leagend battery remote monitoring solution provides key features such as battery state of health (SoH), lifespan prediction and failure ...

### [Remote controlling BMS with Monitoring functions](#)

Available for the various types of battery such as :Lifepo4 battery, LiMno2 Battery,other Lithium battery. Battery protection parameters can be changed in ...



### **JK BMS 150A: Advanced Battery Management System with ...**

The JK BMS 150A represents a cutting-edge Battery Management System designed for high-capacity lithium battery applications. This sophisticated system offers comprehensive ...



### **What is BMS (Battery Management System) Boards**

Battery Management Systems (BMS) are critical for the safe and efficient operation of lithium-ion batteries, which power devices from ...



### **BMS for Lithium-Ion Batteries: The Essential Guide to Battery**

Comprehensive guide to BMS for lithium-ion batteries. Learn battery management system functions, safety features, and protection mechanisms in 2025.





## **DALY Smart BMS 4S 12V 100A with WiFi Module and ...**

DALY Smart BMS 4S 12V 100A with WiFi Module and CAN 485 Communication Protection Board for Remote Monitoring of LifePO4 Lithium Battery Pack ...

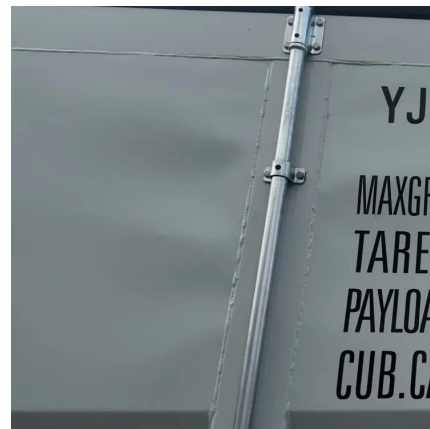


## **Smart BMS 12-200**

The Smart BMS 12-200 is an all-in-one battery management (BMS) system for Victron Lithium Battery 12,8V Smart batteries available with a nominal voltage of 12.8V in various capacities.

## **Orion Battery Management System O2 Lithium Ion Kit - EVolve ...**

Looking for a pre-built, liquid-cooled, battery pack with a BMS already integrated? Experience the future of battery management with the Orion Remote BMS, a groundbreaking system that ...



## **15 Best Lithium Battery BMS Units for Safe and Efficient Power**

Just explore these top 15 lithium battery BMS units to discover the perfect balance of safety, performance, and innovative features for your energy needs.



## 15 Best Lithium Battery BMS Units for Safe and Efficient Power

If you're looking for the 15 best lithium battery BMS units, I recommend considering options with Bluetooth monitoring, robust safety features, and compatibility with ...



## Can You Add an External BMS to Lithium Batteries? A ...

In this guide, we'll explore whether you can add an external BMS to your lithium battery, how it works, and why it might be a game-changer for ...

## Smart BatteryProtect 12/24V

Easy Bluetooth programming. A special setting for Lithium batteries. This feature allows external control from a BMS like the VE.Bus BMS or Lynx Smart BMS. If the load disconnect output of ...





## Contact Us

---

For catalog requests, pricing, or partnerships, please visit:  
<https://www.talbert.co.za>