

BMS Batteries in Australia





Overview

In Australia, lithium batteries must have a Battery Management System (BMS) or an integrated safety device to comply with safety standards. A BMS is essential for preventing overcharging, overheating, and deep discharge, all of which can cause battery failure or even pose a fire risk. What is a battery management system (BMS)?

But without proper protection, your battery could fail sooner than expected, especially under Australia's extreme temperatures and rugged conditions. That's where the Battery Management System (BMS) becomes your battery's best defence. It's the quiet workhorse behind the scenes, keeping your battery safe, efficient, and performing at its best.

Do all lithium batteries have a smart BMS?

All Lithium batteries from Muller Energy include a smart BMS as standard. Designed for Australian conditions, our batteries are a dependable choice for solar setups, 4WDs, caravans, and boats. What is a Battery Management System (BMS)?

A Battery Management System is essentially the control centre of your lithium battery.

What is a lithium battery BMS?

A BMS isn't just here to monitor—instead, it takes an active role in protecting your battery from harm, stepping in when something's off. These lithium battery BMS functions form a robust battery safety system that keeps every charge cycle smart, efficient, and ultra-safe: It's one of the most critical BMS functions in lithium battery protection.

Can I replace my BMS with a new battery?

No, the BMS is built into the battery and designed specifically for that model. Tampering with or replacing the BMS can compromise safety, void your warranty, and potentially damage the battery. If you need a battery with



advanced features like Bluetooth monitoring, it's best to upgrade to a KickAss lithium battery with an integrated smart BMS.

Can you use a lithium battery in Australia?

No, you can't—and you shouldn't. In Australia, lithium batteries must have a Battery Management System (BMS) or an integrated safety device to comply with safety standards. A BMS is essential for preventing overcharging, overheating, and deep discharge, all of which can cause battery failure or even pose a fire risk.

Why is a BMS important in a multi-cell battery?

The BMS prevents charging in extreme heat, protecting internal components from thermal damage. In a multi-cell battery, not all cells behave the same. The BMS balances them out to ensure uniform performance, which helps extend the overall battery lifespan.



BMS Batteries in Australia

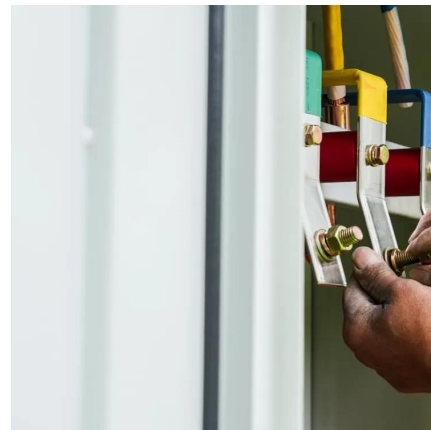


BMS Battery Management by Batrium

The BMS supervisor compatible with our cell monitors, keeping watch, following your rules and taking action when required. As well as connecting to BMI ...

[Australian Battery Technology CSIRO battery ...](#)

All Energy Renaissance batteries feature our Australian battery technology including our cybersecure award winning Australian Battery Management ...



[Comprehensive Guide to Battery Management ...](#)

Comprehensive Guide to Battery Management Systems (BMS): Comparing JBD, JK, PACE, Daly, and More In today's rapidly expanding energy storage ...

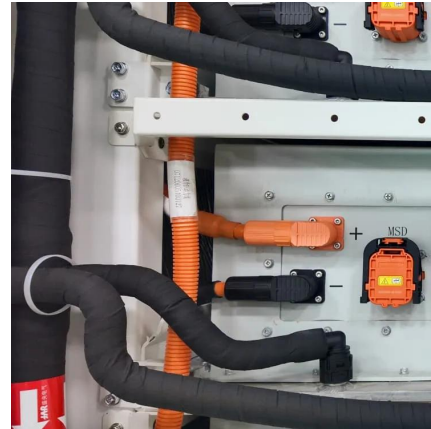


Battery Management Systems in Lithium Batteries , VoltX

Buying a LiFePO4 battery? Learn how the battery management system (BMS) keeps lithium



batteries safe, efficient, and long-lasting in our latest blog.



Australian Battery Technology CSIRO battery management system

All Energy Renaissance batteries feature our Australian battery technology including our cybersecure award winning Australian Battery Management System (BMS). Additionally, every ...



Australian Battery Technology CSIRO battery management system

A Battery Management System (BMS) is a crucial technology for monitoring and controlling battery performance. Acting as the "nerve centre" of all superStorage(TM) batteries, our ...



Understanding BMS: Protecting Your Lithium Battery in Australia

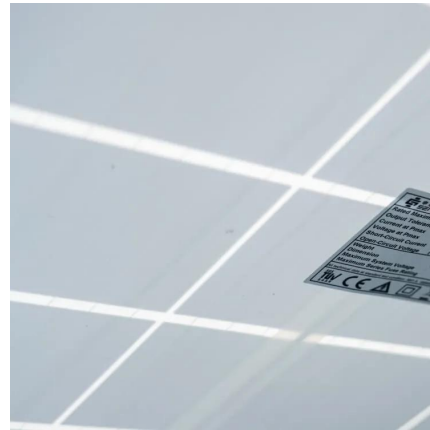
Designed for Australian conditions, our batteries are a dependable choice for solar setups, 4WDs, caravans, and boats. What is a Battery Management System (BMS)? A Battery ...





Lithium Battery Management Systems - EV Power WA Pty Ltd

EV Power manufactures a variety of battery control units from extremely simple (BCU-MICRO08) to remote display models for up to 60V operation.



[Torque E-bikes 52V 20AH & 28AH Batteries](#)

High performance E-Bike Batteries built with A Grade Cells these are the same cells a premium German car manufacturer use on their electric vehicles, these ...

What is a BMS, and Why Do I Need One? - KickAss ...

In Australia, lithium batteries must have a Battery Management System (BMS) or an integrated safety device to comply with safety standards. ...



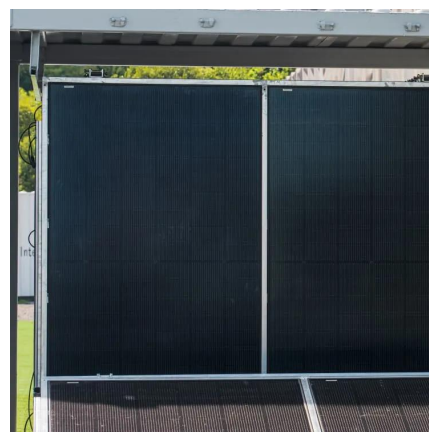
[BMS 14S 50A For 52V eBike Batteries](#)

BMS 14S 50A For 52V eBike Batteries [Click Here](#) For Full Data Sheet Newest BMS technology adopted by Cap Rouge. We are the first reputable company ...



BMS's, what they do and don't do.

The majority of BMS's are set and forget, however there are a few with communication ability, and some settings can be tweaked to make your system run perfectly. ...



Battery Management Systems in Lithium Batteries , VoltX

Buying a LiFePO4 battery? Learn how the battery management system (BMS) keeps lithium batteries safe, efficient, and long-lasting in our ...

Battery Management System (BMS)

Whether you are a homeowner looking to optimize your solar energy storage system, a business owner seeking to electrify your fleet of vehicles, or a renewable energy enthusiast wanting to ...





[\[2025 Guide\] How to Choose LiFePO4 BMS - LiTime-AU](#)

Learn how to choose the right LiFePO4 BMS for your needs with practical tips, especially for a 200Ah lithium battery used in RVs, marine, and ...

[Smart RV Power & Power Management Systems, ...](#)

3 days ago · BMPRO offers smart battery management solutions, powering your adventures. Australian made RV power management systems, 12V battery ...



LITHIUM BATTERY GUIDELINES TO ...

Lithium battery minimum specifications
Lithium battery safety approvals to IEC 62619
Monitoring of batteries
Exclusion zones
Location, ...

Giant Power 12V 170AH Slimline Lithium Battery Australian Made

Giant Power 170AH Slimline Lithium Battery with 100A BMS and Active Cell Balancer 'Australian Made' Lithium Batteries - Easy to Carry - Lightweight Don't Let a Flat Battery Ruin Your Camp ...



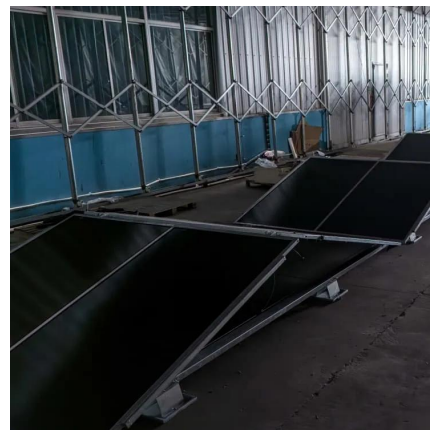
Comprehensive Guide to Battery Management Systems (BMS): ...

Whether you are building a battery for a solar setup, electric vehicle (EV), or DIY energy storage system, choosing the right BMS is essential for managing battery performance, extending ...



[\[2025 Guide\] How to Choose LiFePO4 BMS - LiTime-AU](#)

Learn how to choose the right LiFePO4 BMS for your needs with practical tips, especially for a 200Ah lithium battery used in RVs, marine, and off-grid systems.



[Lithium Battery Troubleshooting: Fix Charging](#)

Discover effective Lithium Battery Troubleshooting. Learn how to fix charging issues, low voltage errors, and BMS faults. Trusted tips from ...





[iTECH120X Deep Cycle Lithium Battery with ...](#)

Advanced 2025 model 105Ah LiFePO4 lithium battery with Bluetooth app, perfect for caravans, 4WDs, marine, or solar storage systems on the go.



[LiTime Australia: LiFePO4 Lithium Solar ...](#)

Discover LiTime's top-rated LiFePO4 batteries in Australia. Perfect for caravans, 4WD, marine, and home energy storage. ...

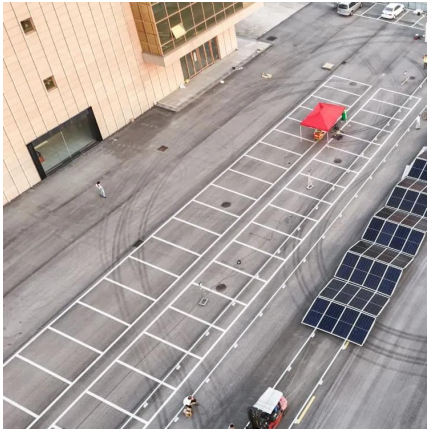
[Electric Scooter Battery Management Systems Guide](#)

Keeping your batteries and your family safe is a top priority. Lithium-ion batteries need proper care to avoid potential hazards. Overcharging, over-discharging, or operating the ...



[Lithium Battery Management Systems - EV Power ...](#)

EV Power manufactures a variety of battery control units from extremely simple (BCU-MICRO08) to remote display models for up to 60V operation.



Battery Management Systems

Never find yourself with a flat battery ever again with REDARC's state-of-the-art battery management systems. Designed to charge and maintain the auxiliary batteries used in ...

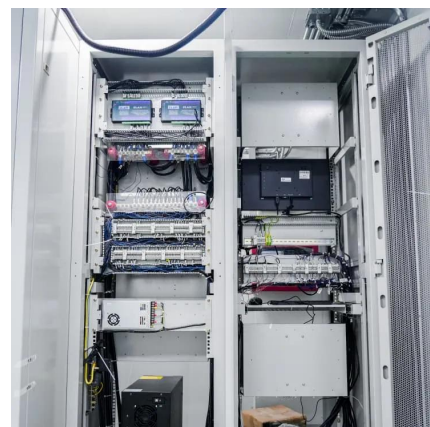


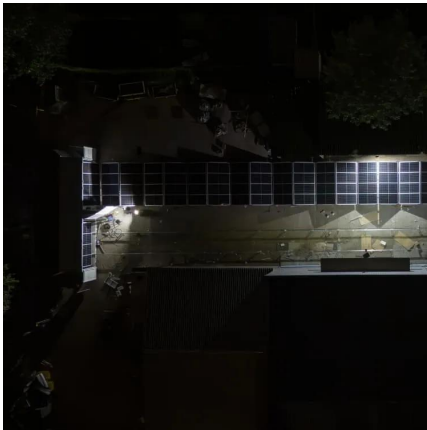
What is a BMS, and Why Do I Need One? - KickAss Products

In Australia, lithium batteries must have a Battery Management System (BMS) or an integrated safety device to comply with safety standards. A BMS is essential for preventing ...

[BYD Battery-Box Premium Operating Manual](#)

The battery module should be stored in an environment with a temperature range between $-10^{\circ}\text{C} \sim +50^{\circ}\text{C}$, and charged regularly according to the table below with no more than 0.5 C (A C ...



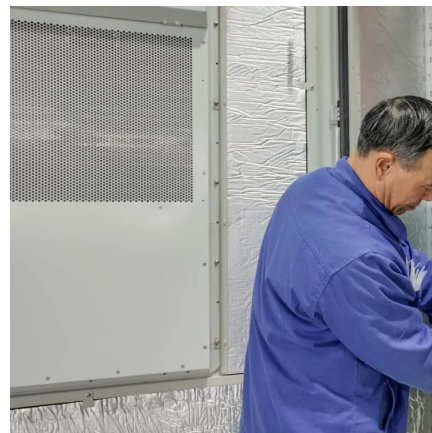


BMS's, what they do and don't do.

The majority of BMS's are set and forget, however there are a few with communication ability, and some settings can be tweaked to make your ...

[BMS for Lithium Batteries in Sydney](#)

Learn how BMS tech protects lithium batteries from damage. Learn the types, benefits, and why Aussies rely on Ozzy Power for reliable battery setups.



Contact Us

For catalog requests, pricing, or partnerships, please visit:
<https://www.talbert.co.za>