

Are all outdoor power supplies connected in series





Overview

Multiple power supplies can be connected in series though higher voltages will exceed SELV requirements and additional protections may need to be installed. Can power supplies be connected in series?

Power supplies can be connected in series to increase the output voltage as shown in Figure 5. Only power supply from the same product series and with same rated output current should be used. The maximum load current should not exceed the smallest rated output current, when selecting power supplies with different current ratings.

Should I connect power supplies in series or parallel?

Connect power supplies in parallel if you want: To connect more devices in a parallel configuration. To install identical power supplies. Again, a customer service representative at Bravo Electro can not only help you choose between connecting power supply in series vs parallel but also offer recommendations on the specific PSUs you should use.

How does a series power supply work?

When you connect power supplies in series, you're essentially connecting them end-to-end, like links in a chain. This doubles system voltage output while halving the current. Say you have two 12-volt power supplies with a maximum current output of three amps.

Can a power supply be used in a series output configuration?

There are a few limitations imposed upon the power supplies when they are used in a series output configuration. One of the limitations is that the output of the supplies must be designed to tolerate the voltage offset due to the series configuration. This offset voltage will normally not be an issue, but.

What voltage should a power supply be connected in series?

The output voltage of the overwhelming majority of power supplies available



on the market is lower 60Vdc. System designs with voltage requirements higher 60Vdc might want to grip to this type of solution. The main considerations for power supplies connected in series are listed below: Stacking power supplies with different voltages is possible.

What are the limitations of a series output power supply?

There are a few limitations imposed upon the power supplies when they are used in a series output configuration. One of the limitations is that the output of the supplies must be designed to tolerate the voltage offset due to the series configuration.



Are all outdoor power supplies connected in series

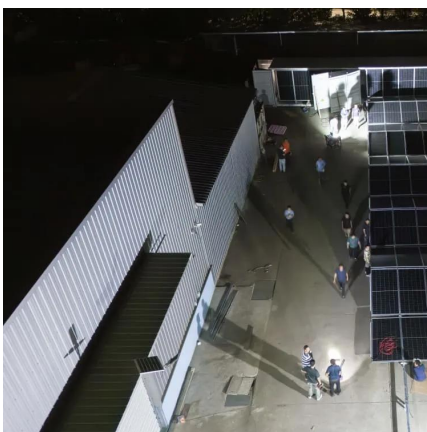
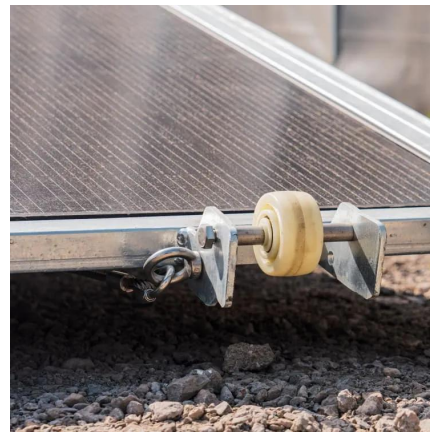


Can I Connect Two Power Supplies Together? Is It Helpful?

Conclusion To conclude, the ability to connect two power supplies together can be a game-changer. Whether you're looking for increased power, enhanced reliability, or voltage ...

Are Landscape Lights Wired in Series or Parallel?

In contrast to series circuits, where resistance accumulates and current diminishes with each added component, parallel circuits maintain a ...



Connecting Batteries in Series: A Diagram Guide

When it comes to power supply, batteries play a crucial role in providing portable and reliable energy. Whether it's for your car, boat, or electronic devices, ...

How to Wire in Series (5-Step Guide)

Reliable Electricity Flow: Series wiring ensures the reliable flow of electricity across the circuit,



leading to more consistent power delivery for ...

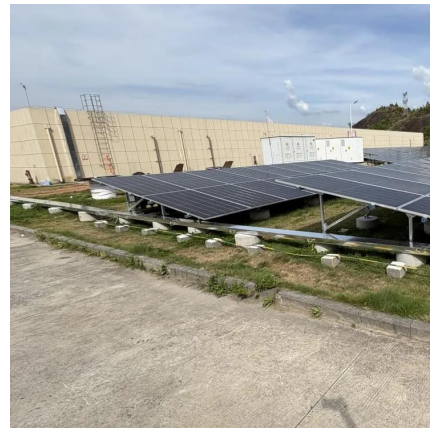


Series and Parallel Circuits in Power Sources

Series wiring connections are made at the positive (+) end of one module to the negative (-) end of another module. When loads or power sources are ...

Connecting Power Supply in Series vs Parallel

In comparison, when the outputs of power supplies are connected in series, each supply provides the required load current and the output voltage provided to the load will be the combination of ...



Creating a Connected Glow: Outdoor Light Series Installation ...

Outdoor lighting is an important aspect of any landscape design. It not only adds curb appeal, but also provides safety and security. One of the most efficient ways to wire outdoor lights is by ...



Connecting Power Supplies in Parallel or Series for ...

The reasons for using multiple power supplies may include redundant operation to improve reliability or increased output power. In this ...



[How to Operate Parallel and Series Connection](#)

To correctly set the output voltage, individually connect each power supply to 50% of the rated load between 85-264Vac input voltage before making the adjustments.

Parallel or Series Operation of Switched-Mode Power Supplies

A somewhat easier technique to increase the total power is to connect the power supplies in series. The assumption is, that there are power supplies with lower voltage ...



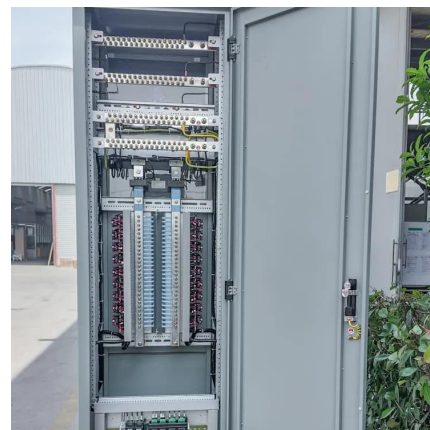
Increased Output Power Connecting Power Supplies in ...

In comparison, when the outputs of power supplies are connected in series, each supply provides the required load current and the output voltage provided to the load will be the combination of ...



Parallel vs. Series Wiring for 12V Lighting: Which Is Right for You?

When it comes to wiring 12V lighting systems, two main configurations typically come into play: parallel and series wiring. Choosing the right wiring method is crucial for ...



[PSU Parallel and Serial Operation , Traco Power](#)

Surely there is another approach? Alternatively, you may be concerned about improving system or equipment availability or uptime and need to ensure redundancy in your ...

[Connecting LED Strips in "Series" vs "Parallel"](#)

The LED strips come with markings that show you which side to connect the positive, and which side to connect the negative (ground) wire, so it's quite straightforward when you just need to ...





Parallel Or Series Circuits Guide

The general recommendation is to connect solar panels in series which would increase the voltage and keep the current the same. This is ...

Connecting Power Supplies in Parallel or Series for Increased ...

The reasons for using multiple power supplies may include redundant operation to improve reliability or increased output power. In this post we explore the mechanics as well as ...



[Connect Power Supplies in Series or Parallel](#)

Two or more isolated channels of one power supply or multiple power supplies can be connected to provide higher voltage or current. Note: Only the isolated channels can be connected in ...

Parallel or Series Operation of Switched-Mode Power ...

A somewhat easier technique to increase the total power is to connect the power supplies in series. The assumption is, that there are power ...



HOW TO CONNECT DC POWER SUPPLIES IN SERIES, ...

Series connection of power supplies may be used when higher output voltage is desired than that can be obtained from one power supply. Power supplies that are connected ...



Parallel or Series Operation of Switched-Mode Power ...

A single power supply is most of the time sufficient in applications connected to an AC power source. However, there are sometimes additional ...



Parallel Or Series Circuits Guide

The general recommendation is to connect solar panels in series which would increase the voltage and keep the current the same. This is because MPPT solar charge ...





Connecting Power Supply in Series vs Parallel

In general, connecting power supplies in series grants greater versatility and is easier to set up than connecting power supplies in parallel. But, now that you know the pros ...



How to Connect Multiple LED Lights To One Power ...

The purpose of this article is to provide you with a comprehensive guide on how to connect multiple LED lights to one power source.

Power supply in series vs. parallel

Learn about connecting power supplies in series and connecting power supplies in parallel. Understand how to increase maximum output voltage or current.



How to Wire Electrical Outlets in Series: A Step-by ...

Learn how to wire electrical outlets in series to efficiently connect multiple outlets in a circuit and ensure proper electrical functionality.



Powering Up: Can You Wire 2 12V Power Supplies in Series?

The Basics Of Series And Parallel Connections
Before diving into the topic of wiring two 12V power supplies in series, it's essential to understand the basics of series and ...



Are Landscape Lights Wired in Series or Parallel?

In contrast to series circuits, where resistance accumulates and current diminishes with each added component, parallel circuits maintain a constant voltage across all devices - ...

14.15.& 16 Circuitry Fundamentals Test Review

When power supplies are connected in series, the voltage of the ____ power supplies is equal to the sum of the power supply voltages.
Reference: Theory 14.5 (A)





Series and Parallel Circuits in Power Sources

Series wiring connections are made at the positive (+) end of one module to the negative (-) end of another module. When loads or power sources are connected in series, the voltage increases.

Contact Us

For catalog requests, pricing, or partnerships, please visit:
<https://www.talbert.co.za>