

72 photovoltaic panel size





Overview

The average 72-cell solar panel size measures 3.25 feet by 6.42 feet and is laid out as a 6 x 12 grid, making them almost a foot taller than the 60-cell standard size panels.



72 photovoltaic panel size

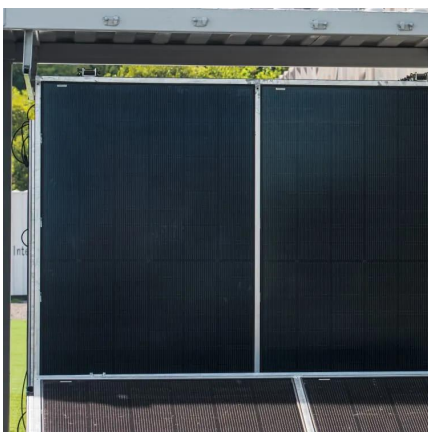


TP300 series

TP300 series 72-cell multi-crystalline solar photovoltaic modules
PRODUCT FEATURES 72 cell configuration with wattage ranging from 300 to 330 watts High fill factor for improved ...

[Solar Panel Size Guide: How Big Is A Solar Panel?](#)

Standard Solar Panel Sizes Traditional solar panels come in two common configurations: 60-cell and 72-cell. The standard dimensions for each option are: 60-cell ...



Complete Guide to Solar Panel Size

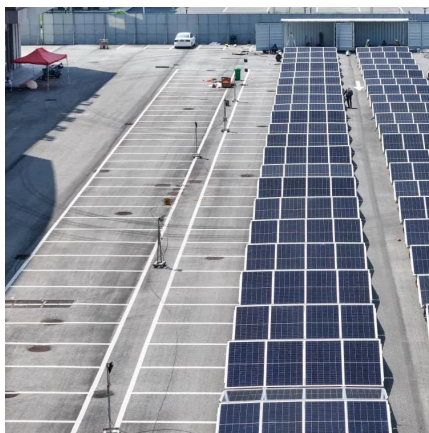
72- cell panels are bigger, measuring around 6.5 feet by 3 feet, weigh about 50 pounds, and are typically considered commercial solar panels. An average solar panel system requires ...

[Solar Panel Dimensions and Sizes: Complete Guide](#)

The average 72-cell solar panel size measures 3.25 feet by 6.42 feet and is laid out as a 6 x 12



grid, making them almost a foot taller than the 60-cell standard size panels.



[Solar Panel Size Guide \(with 4 Charts\)](#)

While one person can lift a 40 solar panel, the shape makes it difficult especially if you want to mount it on a roof. 72 cell solar panels are over 6 ft high so two people need to carry it. Do not ...

[Understanding Solar Panel Sizes and Wattage: A ...](#)

Furthermore, with over 2,500 utility-scale photovoltaic (PV) electricity-generating facilities in the United States, the demand for this ...



A Guide to Solar Panel Dimensions

There are many different sizes of solar panels, but the two most frequently used sizes are: A 60-cell solar panel. A 72-cell solar panel. By comparing their dimensions, you can ...



Guide to Solar Panel Size and Wattage: Choosing the ...

A guide about solar panel size and solar panel wattage. The right home solar power system design will give you the most savings and best ...



A Guide to Solar Panel Dimensions

There are many different sizes of solar panels, but the two most frequently used sizes are: A 60-cell solar panel. A 72-cell solar panel. By ...

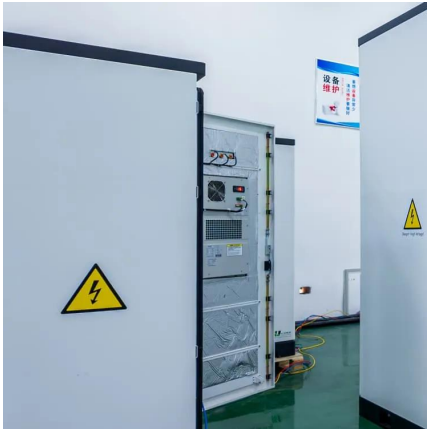
Understanding Solar Panel Sizes in Australia: A ...

In this guide, we explore solar panel sizes, dimensions, and wattage outputs, with a special focus on Australian households and ...



[How Big Are Commercial Solar Panels?](#)

The average solar panel size for commercial use is 72 cells, approximately 78x39 inches. Panels this size produce 350-400 watts, making them ideal for large ...



Solar Panel Size Chart: Making the Right Choice In 2024

Chart 1: Solar Panel Size, Dimensions (W x H x D), Wattage Solar Panels Size Chart By The Type of Solar Panels There are various types of ...



Complete Guide to Solar Panel Size

The average 72-cell solar panel size measures 3.25 feet by 6.42 feet and is laid out as a 6 x 12 grid, making them almost a foot taller than the ...

Solar Panel Sizes, Dimensions & Wattage for ...

Solar panel size refers to the power output (typically ranging between 450W and 600W per panel for commercial-grade modules) while solar panel dimensions ...





Solar Panels Sizes and Weights (All Sizes)

Seventy-two-cell solar panels measure 80 inches long by 40 inches wide. Like 60-cell solar panels, the normal depth can be between 1.4 and 1.8 inches. Seventy-two-cell solar ...

Solar Panel Sizes and Wattage Explained

Solar panel size per kilowatt and wattage calculations depend on PV panel efficiency, shading, and orientation.



Solar Photovoltaic Panel Sizes [Full List And Other ...

A monocrystalline residential solar panel typically comes in two sizes: 60-cell and 72-cell. The 60-cell panels are about 65 by 39 inches and have a power ...

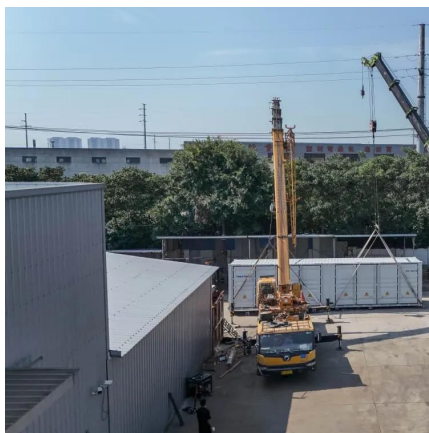
Understanding Solar Panel Dimensions In 2025: A ...

Explore the most common solar panel dimensions in 2025, including residential and commercial sizes. Learn how solar panel size ...



What are the Standard Sizes of Solar Photovoltaic ...

A 72-cell panel arranges the cells in a 6×12 grid, with the cells generally measuring about 3-4 cm in height. Note: Nowadays, the most common solar ...



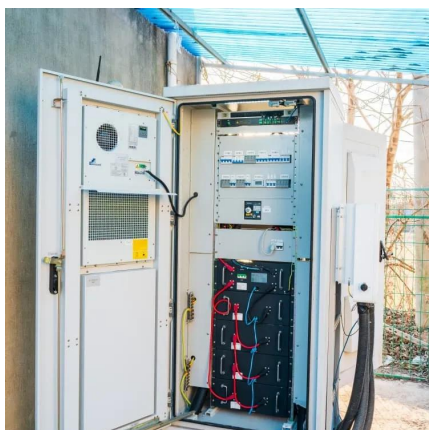
Standard Solar Panel Sizes And Wattages (100W-500W ...

The dimensions of 72-cell solar panels are as follows: 77 inches long, and 39 inches wide. That's a 77×39 solar panel; basically, a longer panel, mostly used for commercial solar systems. 96 ...



What are the Standard Sizes of Solar Photovoltaic Panels?

A 72-cell panel arranges the cells in a 6×12 grid, with the cells generally measuring about 3-4 cm in height. Note: Nowadays, the most common solar cell sizes are 166mm, 182mm, and 210mm.





[REC Alpha REC450AA 72 450W Solar Panel](#)

REC Solar's Alpha REC450AA 72 solar panel is a revolutionary solar panel achieving incredible levels of efficiency, power, and strength. This reliable solar panel is ideal for homes or ...



[Solar Panel Size Guide: How Big Is A Solar Panel?](#)

Standard Solar Panel Sizes Traditional solar panels come in two common configurations: 60-cell and 72-cell. The standard dimensions for each ...

Solar Panels Size & Weight (Including Commercial Dimensions)

The standard solar panel size typically contains either 60 or 72 cells. You can also find panels with as few as 32 solar cells on recreational vehicles, as well as some larger ...



Solar Photovoltaic Panel Sizes [Full List And Other FAQs]

A monocrystalline residential solar panel typically comes in two sizes: 60-cell and 72-cell. The 60-cell panels are about 65 by 39 inches and have a power output of around 280-320 watts, and ...



Solar Panel Dimensions: Average Size Explained

Typically there are 2-configurations of cells used in solar panels for residential and commercial use; 60-cell and 72 cells.



Solar Panels Sizes and Weights (All Sizes)

Seventy-two-cell solar panels measure 80 inches long by 40 inches wide. Like 60-cell solar panels, the normal depth can be between 1.4 ...

60 Cell vs. 72 Cell Solar Panels: Which is Right For You?

When it comes to dimensions, 60-cell panels are usually built six cells wide and ten cells tall. 72-cell panels are also six cells wide but have an additional two rows of cells that ...





[Solar Panel Size And Weight: A Comprehensive Guide](#)

Learn all about solar panel dimensions and weight in this comprehensive guide.

60 Cell vs. 72 Cell Solar Panels: Which is Right For You?

When it comes to dimensions, 60-cell panels are usually built six cells wide and ten cells tall. 72-cell panels are also six cells wide but have an ...



[Standard Solar Panel Sizes And Wattages \(100W ...](#)

The dimensions of 72-cell solar panels are as follows: 77 inches long, and 39 inches wide. That's a 77×39 solar panel; basically, a longer panel, mostly ...

What Size Are Solar Panels? A Comprehensive Guide ...

The Impact of Solar Panel Size on Energy Output and Efficiency Understanding what size are solar panels is crucial, as the dimensions of solar ...



Contact Us

For catalog requests, pricing, or partnerships, please visit:
<https://www.talbert.co.za>