

5g base station communication equipment installation





5g base station communication equipment installation



Test and Measurement

When installing new LTE or 5G base stations that include RF cable feeds to the antenna installation tower crews need to be certain that the ...

Quick guide: components for 5G base stations and antennas

Your 5G base-station design and 5G antenna components will need to address not only technical challenges, but also aesthetics, weather and security requirements. This guide ...



DBS5900 Distributed Base Stations -- Huawei Enterprise

The distributed architecture is adopted to separate the RF unit part of the base station from the baseband unit part, connecting the two parts through optical fiber, which minimizes the feeder ...

Communication equipment base station installation auxiliary ...

A technology for communication equipment and installation assistance, which is applied in



wireless communication, selection devices, electrical components, etc. It can solve the ...



Base transceiver station

A base transceiver station (BTS) or a baseband unit[1] (BBU) is a piece of equipment that facilitates wireless communication between user equipment (UE) and a network. UEs are ...

[5g Base Station royalty-free images](#)

Find 5g Base Station stock images in HD and millions of other royalty-free stock photos, illustrations and vectors in the Shutterstock collection. Thousands of ...



[5G Glass Antenna Turns Windows Into Base Stations](#)

Because 5G networks include spectrum comprising higher frequencies than 4G, base stations for 5G networks serve a smaller coverage ...



Base Station Installation & Maintenance Test Solutions

Installation and the upgrading of base stations are underway to expand to 5G coverage.

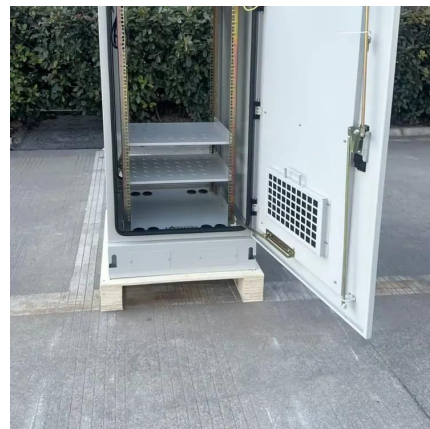


COMONENTS OR 5G BASE STATIONS AND ANTENNAS

A) 5G will still require hardware changes. It will act as an interim, but it will still not satisfy the need for true 5G network architecture. The number of base stations needed increases with each ...

5g network installation

The deployment of a 5G network involves several technical steps, including infrastructure development, spectrum allocation, and equipment installation. Here is a detailed ...



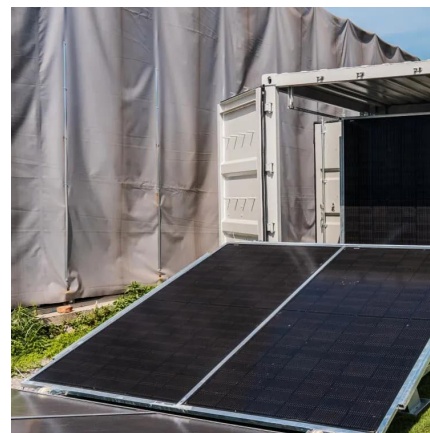
Step-by-Step Guide: Installing 5G Communication Equipment

This guide will walk you through the essential steps and considerations for a successful installation, focusing on the Aluminum Die-Cast 5G Communication Box by Ningbo ...



5G Base Station Prototyping: Architectures Overview

The implementation of 5G technologies is associated with a number of difficulties, including the cost of upgrading the infrastructure of mobile operators. Therefore the introduction of different ...



Murata-Base-station-app-guide

To design effective and long-lasting 5G infrastructure, the architecture of the base stations should be considered right down to the level of components. When selecting a manufacturer, the ...

Hebei Mailing

Hebei Mailing Communication Equipment Co., Ltd. offers a wide range of communication equipment like 4G/5G products. With over 13 years of experience, it serves clients globally, ...





Base Station Transmits: 5G

The importance of active antenna systems in 5G networks has significantly changed the installation and maintenance of base stations. Gone ...

[What Are Base Station Antennas? Complete Guide](#)

In modern telecommunications systems, the base station antenna stands out as an undeniable and crucial component to facilitate our daily communication from voice calls to ...

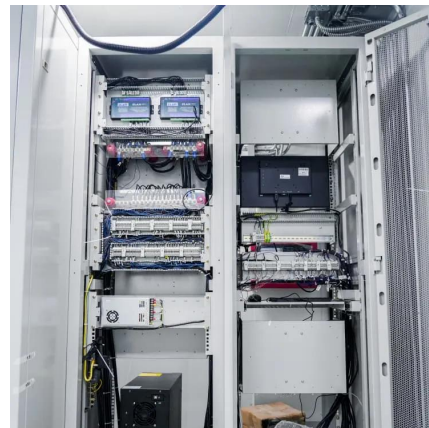


5G Base Station Evolution , OpenRAN: RUs, DUs, CUs, and ...

From 4G to 5G technologies, Faststream has followed an evolutionary approach, with a strong emphasis on delivering able next-generation experiences and connections for our customers ...

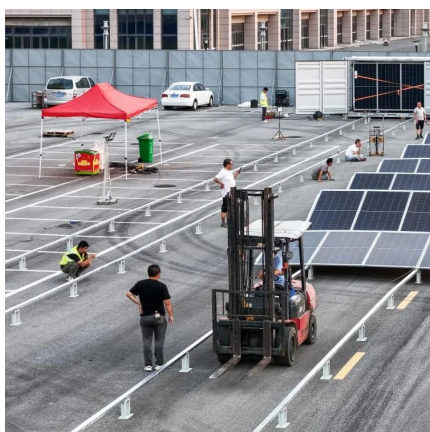
Base Station Transmits: 5G

The importance of active antenna systems in 5G networks has significantly changed the installation and maintenance of base stations. Gone are the days of simply ...



Base Station Installation & Maintenance Test Solutions

Installation and the upgrading of base stations are underway to expand to 5G coverage. To ensure stable communication between a base station and connect with the stability of mobile ...



Infrastructure and equipment

This article explores the various elements that make up 5G infrastructure and equipment, and their crucial role in the deployment and operation of this technology.



5G Technology

5G and Health Risks: 2020 Update Diffuse feeling of health risks associated with 5G exposure; Several sabotages of towers hosting pre-5G equipment; Some countries have denied the ...



[A guide to choosing Base Station Antennas](#)

5G as a reality is already well underway. Most operators worldwide have already adopted 5G as their main technology to support the increased network traffic and new mobile ...



5G Base Station Installation: Process and Best Practices

A mind map about 5g base station installation: process and best practices. You can edit this mind map or create your own using our free cloud based mind map maker.

Installation Criteria for a 5G Technology Cellular Base Station

It is concluded, after the investigation, that the traditional construction process of 5G networks is currently deficient, so it is essential to carry out a pre-implementation study to identify the ...



[5G RAN Architecture: Nodes And Components](#)

4. Base Station Base Station (BS) is a key component of the 5G Radio Access Network (RAN) architecture that serves as an access point for wireless connections between ...



Contact Us

For catalog requests, pricing, or partnerships, please visit:
<https://www.talbert.co.za>