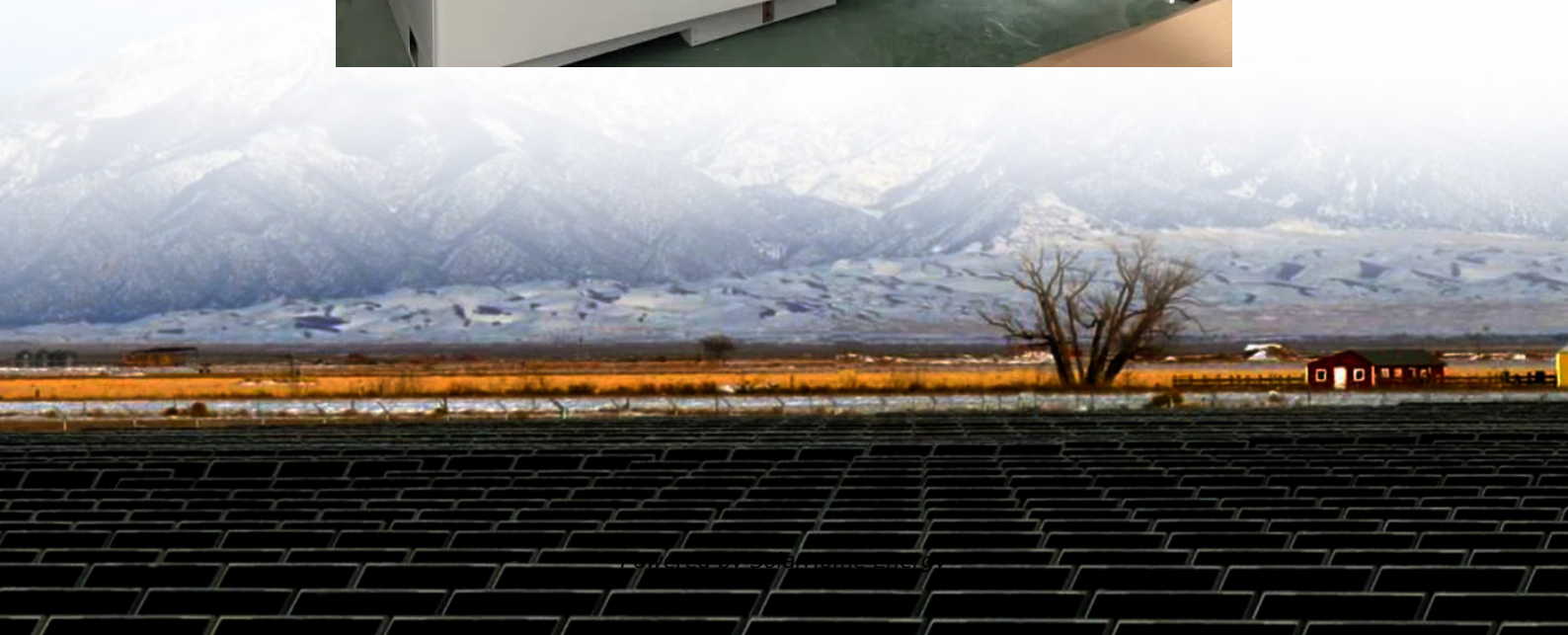


5G communication indoor base station





Overview

What is a 5G small cell base station?

5G Small Cell indoor and outdoor 'all-in-one' radio access for private 5G wireless networks. 5G Small Cell Base Stations (Micro Cell, Femtocell) offer advanced features and “stand alone” capability for private networks.

Can a 16 element indoor base station cover 5G?

In this paper, a wideband 16- element indoor base station (BS) antenna array that can cover 3.3–6.0 GHz is proposed for 5G applications. A π -shaped monopole antenna is designed to cover the Lower band (LTE bands 42/43–N77–N78), the intermediate band (N79), and the higher band (LTE 46).

What is a x4000 5G base station?

"Stand Alone" operation is possible which enables the 5G Base station to connect remote terminals without need for external network elements. Custom designed for private 5G mobile networks using 5G FR1 radio spectrum. The X4000 5G 'All-in-One' includes Radio Unit (RU), Distributed Unit (DU) and Centralised Unit (CU).

Is BS MIMO good for a 5G base station?

The proposed BS MIMO system shows quite high isolation, antenna efficiency about 82%–93.2%, and ECC below 0.02, which were good enough for a practical 5G MIMO indoor base station. The calculated ergodic channel capacity of the 16 × 16 MIMO system reached up to 85 bps/Hz.

What is a 5G small cell?

These megabit- or gigabit-speed gadgets can be installed on the ceilings and walls of homes and offices to boost the radio frequency (RF) signal strength of cellular networks. 5G networks are becoming increasingly dependent on indoor small cells. This trend is likely to continue as more 5G small cells are deployed in offices, homes and apartments.



Are small cells the future of 5G?

5G networks are becoming increasingly dependent on indoor small cells. This trend is likely to continue as more 5G small cells are deployed in offices, homes and apartments. Compare the different base stations used for 5G deployment, including macrocells and small cells.



5G communication indoor base station

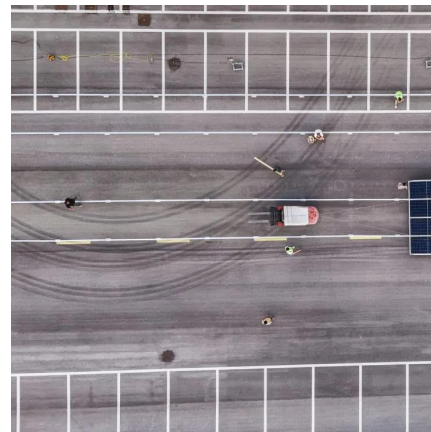


Indoor positioning with multi-beam CSI of commercial 5G signals

The fifth-generation (5G) network has been deployed for a vast number of users. The advanced capabilities of 5G technology have opened up opportunities for accuracy ...

5G indoor base station using 28GHz band

The device, which incorporates circuitry 1/10th the size of a conventional indoor base station, is extra small for easy installation, minimises ...



Developing all-in-one base stations for 5G indoor use

Nokia is using Qualcomm Technologies' chipsets for its 5G RAN all-in-one base stations for indoor use. The small cells are designed for inside residential and enterprise ...

5G indoor base station using 28GHz band

The device, which incorporates circuitry 1/10th the size of a conventional indoor base station, is



extra small for easy installation, minimises energy consumption and achieves ...



16-ports indoor base station MIMO array for sub-6 ...

A typical 5G multiple-input and multiple-output (MIMO) system must combine a high number of antennas at both the transmitter and receiver to ...



Advanced Optical-Radio Communication System for 5G Base Stations ...

4 hours ago · Advanced Optical-Radio Communication System for 5G Base Stations at 60 GHz Using MMW-FSO Links with Integrated Space-Division Multiplexing



Energy-efficiency schemes for base stations in 5G heterogeneous

In today's 5G era, the energy efficiency (EE) of cellular base stations is crucial for sustainable communication. Recognizing this, Mobile Network Operators are actively prioritizing EE for ...





5G mmWave BBU_mmWave Distributed Base Station_SageRAN

...

It is a small and low-power indoor distributed small base station that provides 5G mobile signal coverage for indoor scenarios through access to fixed broadband, proprietary backhaul, and ...



[Ambitious 5G base station plan for 2025](#)

The move comes as the country charted its vision for industrial growth during a two-day work conference of the Ministry of Industry and Information Technology. With 4.19 million 5G base ...

16-ports indoor base station MIMO array for sub-6 GHz 5G

In this paper, a wideband 16- element indoor base station antenna array is proposed for 5G applications. A p-shaped monopole antenna is designed to cover the Lower ...



5G mmWave BBU_mmWave Distributed Base Station_SageRAN

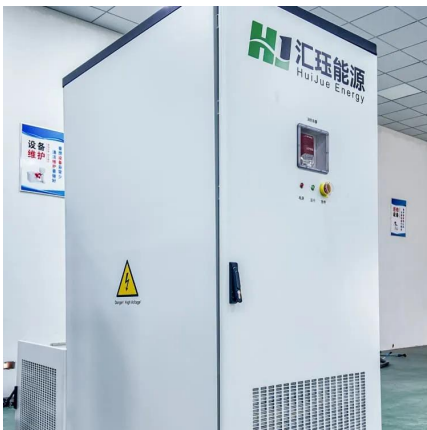
...

The 5G mmWave BBU is the baseband processing unit of the SageRAN's XLink(TM) 5G mmWave distributed small cell solution. It is a small and low-power indoor distributed small base station ...



5G Indoor Small-Cell Base Station , Vicor

Case study: 5G indoor small-cell base station. The demand for mobile data, video and music streaming has increased wireless network demand exponentially, and 5G networks are ...



Indoor Localization in Commercial 5G Environment ...

In this paper, an effective fingerprint solution is proposed for indoor positioning with 5G signal base station by exploring the multi-beam property.

4 types of Base stations

Macro cell, Micro cell, Pico cell and Femto cell are 4 types of base stations in wireless communication networks.





X4000 5G RAN 'All-in-One' gNodeB

X4000 5G SDR Small Cell Indoor Radio is an integrated advanced system capable of handling 5G Standalone wireless network waveforms. Provided in ...

[Winegard Launches The Basestation 5G](#)

16 hours ago· Winegard is launching a new indoor router called the Basestation 5G, which is available for preorder with shipping expected the week of Sept. 22nd, 2025. The price is \$799, ...



Indoor 5G gets a boost as small cells come to rescue

Compare the different base stations used for 5G deployment, ...

Mobile campus network

We can provide compatible devices or 5G cellular modem modules. Alternatively, we can also conduct compatibility tests at an early stage to ensure that the ...



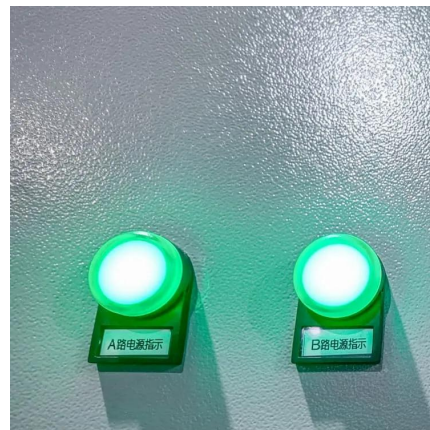
5G Base Station Growth: How Many Are Active? , PatentPC

Explore the rise of 5G base stations worldwide. Get key stats on active installations and how they impact network coverage.



5G Communication Signal Based Localization with a Single Base ...

With the growing demand for high accuracy indoor localization, the fifth generation (5G) wireless communication technology based localization attracts increasin



5G Communication Signal Based Localization with a Single Base Station

With the growing demand for high accuracy indoor localization, the fifth generation (5G) wireless communication technology based localization attracts increasin





X4000 5G RAN 'All-in-One' gNodeB

X4000 5G SDR Small Cell Indoor Radio is an integrated advanced system capable of handling 5G Standalone wireless network waveforms. Provided in a sealed carrier grade unit for indoor ...

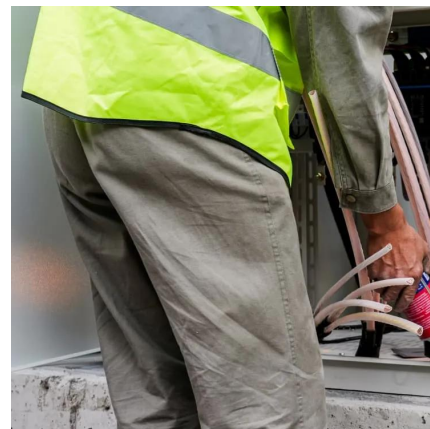


Indoor 5G gets a boost as small cells come to rescue

Compare the different base stations used for 5G deployment, including macrocells and small cells. With the deployment of low-band and midband 5G cellular networks by U.S. ...

5G RAN Architecture: Nodes And Components

4. Base Station Base Station (BS) is a key component of the 5G Radio Access Network (RAN) architecture that serves as an access point for wireless connections between ...



Base Stations

Base stations are important in the cellular communication as it facilitate seamless communication between mobile devices and the network communication. The demand for ...



Mobile campus network

We can provide compatible devices or 5G cellular modem modules. Alternatively, we can also conduct compatibility tests at an early stage to ensure that the planned deployment of your ...



[5G Indoor Small-Cell Base Station , Vicor](#)

Case study: 5G indoor small-cell base station. The demand for mobile data, video and music streaming has increased wireless network demand exponentially, ...

A Triple-Band Dual-Polarized Indoor Base Station Antenna for

This article presents a novel design for a triple-band dual-polarized indoor base station antenna that supports 2G, 3G, 4G, and sub-6 GHz 5G applications. The antenna features two ...



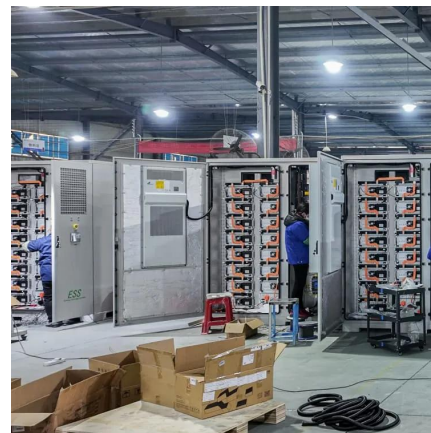


5G NR Macro gNodeB

The 5G NR Macro gNodeB is a tool that acts as a 5G wireless base station, enabling communication between compatible devices and the 5G network. ...

TB4 TETRA Hybrid base station , Airbus

TB4 is a hybrid base station, with both TETRA and 4G/5G technologies in one base station. This allows operators flexibility - TB4 offers smooth evolution to ...



Contact Us

For catalog requests, pricing, or partnerships, please visit:
<https://www.talbert.co.za>