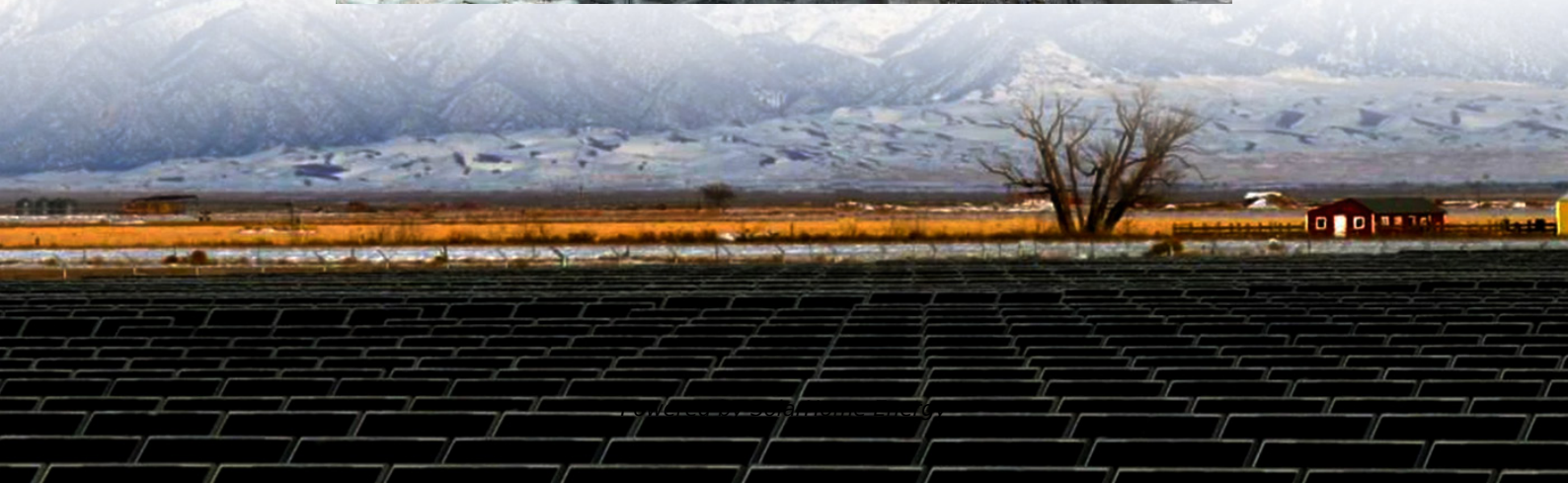


# **48v 60ah lithium battery connected to inverter 3000 watts**





## Overview

---

Pairing a right size capacity battery for an inverter can be a bit confusing for most the beginners So I have made it easy for you, use the calculator below to calculate the battery size for 200 watt, 300 watt, 500 watt, 1000 watt, 2000 watt, 3000 watt, 5000-watt inverter .

Note!The battery size will be based on running your inverter at its full capacity Assumptions 1. Modified sine wave inverter efficiency: 85% 2. Pure sine wave inverter efficiency:90% 3. Lithium Battery:100% Depth of discharge limit 4. lead-acid.

To calculate the battery capacity for your inverter use this formula Inverter capacity (W)\*Runtime (hrs)/solar system voltage = Battery Size\*1.15 Multiply the result by 2 for lead-acid type.

You would need around 24v150Ah Lithium or 24v 300Ah Lead-acid Batteryto run a 3000-watt inverter for 1 hour at its full capacity .

Here's a battery size chart for any size inverter with 1 hour of load runtime Note! The input voltage of the inverter should match the battery voltage. (For example 12v battery for 12v.

What battery to use for 3000 watt inverter?

To power a 3000 watt inverter, it is recommended to use a 48V lithium battery with a capacity ranging from 62.5Ah to 200Ah. This ensures sufficient power supply for the inverter's requirements.



## 48v 60ah lithium battery connected to inverter 3000 watts

---

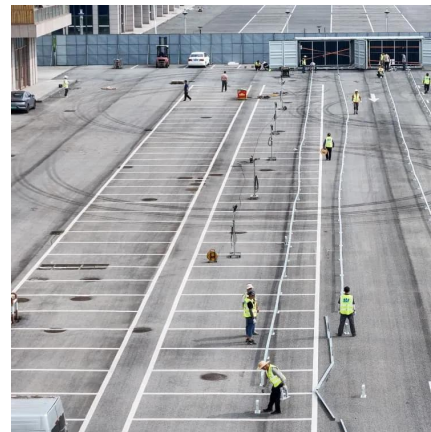


### Enduro Power Batteries - Key Features, Availability, ...

Enduro Power Batteries have been advertised a 10-year warranty on their lithium (LiFePO4) battery products, which was a significant selling ...

### 280Ah batterybank and 3000W inverter

I'm planning for my 24V LFP 8x280Ah (290Ah) batterybank and wondering if it will be enough for a 3000W LF inverter. 3000W is the absolute ...



### How Many 12V Batteries for 3000W Inverter

A 3000W inverter can deliver up to 3000 watts of power to your appliances, but it's important to note that inverters aren't 100% efficient. In fact, most operate at around 90% efficiency.

## Usual Energy , Empowering Sustainability for a Greener Future

Learn how to connect an inverter to a battery with step-by-step guidance for efficient energy





usage and sustainability.



## What Size Lithium Battery Do I Need to Run a 3000 Watt Inverter?

This comprehensive guide will delve into the specifics of calculating battery requirements, choosing the right battery type, and understanding how to meet your energy needs effectively.



## Understanding Battery Capacity and Inverter Compatibility

When pairing a 100 Ah lithium battery with a 1000 watt inverter, it is crucial to ensure compatibility to achieve optimal performance. Lithium batteries typically offer better ...



## Batteries for a 3000 Watt Inverter: A Complete Guide

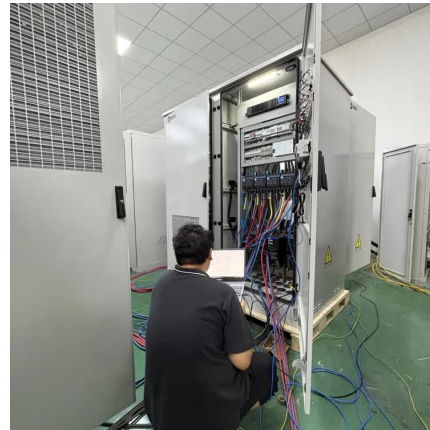
And to be honest, there are so many different pieces of advice out there that it becomes confusing. That's why I've written this complete guide to help you out. Together we will go ...





## How Many Batteries For a 3000W Inverter , Battery Sizing ...

If the maximum load that will be connected to the inverter is less than the inverter's maximum capacity (3000 watts), which is the typical practical use, you can use the same ...

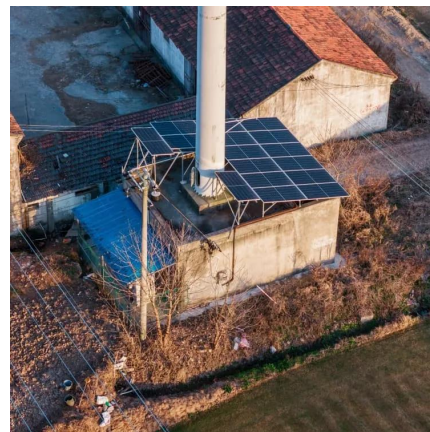


## How Many Batteries for a 3000 watt Inverter? [Diagrams]

Lead-acid batteries have a C-rate of 0.2C, while lithium (LiFePO4) batteries have a higher C-rate of 1C. To manage current and cable size, adjust ...

## How many batteries are needed to run a 3000 watt ...

To power a 3000 watt inverter, it is recommended to use a 48V lithium battery with a capacity ranging from 62.5Ah to 200Ah. This ensures ...



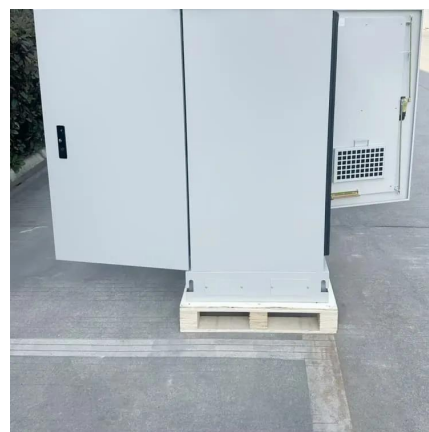
## Buy 48V 60AH Lithium Battery , 4 Year Replacement ...

Boost the power of your golf carts and trolling motors with 48V 60AH lithium batteries. Shock-resistant and 5x lifetime than Lead Acid batteries. ORDER ...



## Charging Battery While Connected To Inverter (Explained!)

Can I charge a battery while it's connected to an inverter? in short, the answer is Yes, you can charge a battery while using an inverter. but make sure that the load should be ...



## 3000W Solar Inverter Guide 2025: Reviews, Installation & Sizing

A 3000W solar inverter converts 12V, 24V, or 48V DC power from your battery bank into standard 120V AC power that runs household appliances. The "3000W" rating refers to ...

## NOVA 3K , 3000 Watt (3kW) 48 Volt Off-Grid Hybrid Solar Inverter

NOVA 3K , 3000 Watt (3kW) 48 Volt Off-Grid Hybrid Solar Inverter , Premium 3000W 48V Hybrid Inverter for RVs, Cabins, Tiny Homes, Off-Grid , Top Rated is backordered and will ship as ...





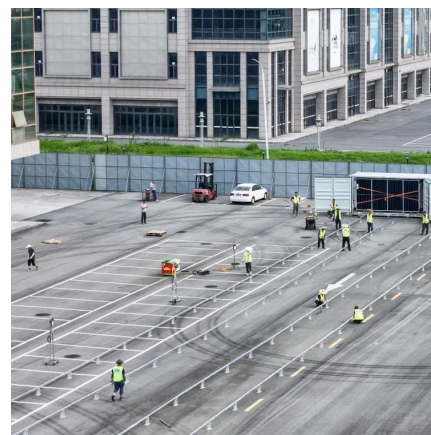


## Batteries for a 3000 Watt Inverter: A Complete Guide

Ahhhh batteries, inverters, and runtimes... It can be a bit of a nightmare trying to work out the best battery size for your 3000 watt inverter.

### How Many Batteries for a 3000 watt Inverter? [Diagrams]

You need 4 Lithium batteries in series to run a 3,000W inverter. If you use lead-acid batteries, you need 12 batteries with 4 in series and 3 ...



## Battery Runtime Calculator , How Long Can A Battery ...

The Battery Runtime Calculator is an indispensable tool for anyone using batteries for power supply, be it in RVs, boats, off-grid systems, ...

### 48V Battery 3000W

How the 48V Battery 3000W Works The 48V battery 3000W works by converting chemical energy stored in the battery into electrical energy, which can be used to power devices.



### [How Many Batteries For 3000 Watt Inverter?](#)

Since the 3000 watt inverter converts solar energy into usable AC power, that means we need lithium batteries to store the converted energy. For 3000W ...

### **LiTime 48V 60Ah Golf Cart Lithium Real-Time Monitor ...**

Upgrade your ride with the LiTime 48V 60Ah LiFePO4 CAN/RS485 real-time monitor golf cart battery. Reliable energy for peak performance on the course!



### [Hybrid 3000 Watt Pure Sine Wave Inverter 24V/48V](#)

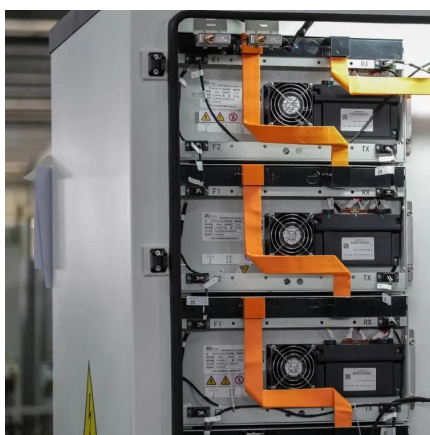
What Types Of Batteries Can This 3000 watt pure sine wave inverter work with? The 3000 watt hybrid pure sine wave power converter can use a variety of ...





## How Many Batteries For a 3000W Inverter , Battery ...

If the maximum load that will be connected to the inverter is less than the inverter's maximum capacity (3000 watts), which is the typical ...



### 280Ah batterybank and 3000W inverter

I'm planning for my 24V LFP 8x280Ah (290Ah) batterybank and wondering if it will be enough for a 3000W LF inverter. 3000W is the absolute max I will use continuously and ...

### How Many Batteries For 3000 Watt Inverter?

Since the 3000 watt inverter converts solar energy into usable AC power, that means we need lithium batteries to store the converted energy. For 3000W system, the number of batteries ...



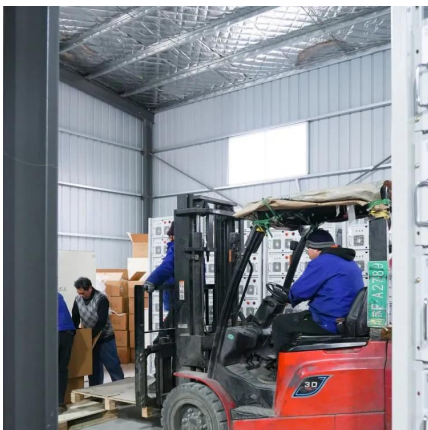
### **How Many Batteries for a 3000 watt Inverter? [Diagrams]**

You need 4 Lithium batteries in series to run a 3,000W inverter. If you use lead-acid batteries, you need 12 batteries with 4 in series and 3 strings in parallel.



## Choosing the Right Battery Size for 3000 Watts: A Complete Guide

This article walks you through the factors that determine the battery size needed to support 3000 watts of power and provides valuable tips on optimizing your energy system.



## Calculate Battery Size For Any Size Inverter (Using Our Calculator)

Pairing a right size capacity battery for an inverter can be a bit confusing for most the beginners So I have made it easy for you, use the calculator below to calculate the battery ...

## Batteries for a 3000 Watt Inverter: A Complete Guide

And to be honest, there are so many different pieces of advice out there that it becomes confusing. That's why I've written this complete guide to help you ...





## Battery Runtime Calculator , How Long Can A Battery Last

The Battery Runtime Calculator is an indispensable tool for anyone using batteries for power supply, be it in RVs, boats, off-grid systems, or even in everyday electronics. This ...

## How many batteries are needed to run a 3000 watt inverter?

To power a 3000 watt inverter, it is recommended to use a 48V lithium battery with a capacity ranging from 62.5Ah to 200Ah. This ensures sufficient power supply for the ...



## Contact Us

---

For catalog requests, pricing, or partnerships, please visit:  
<https://www.talbert.co.za>