

## **36v lithium battery pack charges fastest**





## Overview

---

Lithium batteries charge faster than lead-acid counterparts due to higher charge acceptance rates and efficient chemistry. Lead-acid batteries often require 6-10 hours, while lithium batteries can reach full charge in 4-6 hours under optimal conditions. How long does a 36V battery take to charge?

A 36v battery can take anywhere from 4-6 hours to charge. The time it takes to charge a battery depends on the amp hours of the battery and the voltage of the charger. Most 36v batteries have between 10 and 20 amp hours. How Long Does It Take to Charge a 36V Lithium Battery?

.

Are 36V lithium ion batteries better than lead-acid batteries?

Unlike lead-acid, which requires slower charging times (often 8-12 hours), 36V lithium-ion batteries can support fast charging (80% in 1-2 hours), making them more convenient for high-demand applications. 8. Cold Weather Performance.

How do I charge a 36V lithium battery?

If you have a 36V lithium battery, there are a few things you need to know in order to charge it properly. First, make sure that you have the correct charger for your battery. Using the wrong charger can damage your battery and cause it to not work properly.

What is a 36V lithium ion battery?

A 36V lithium-ion battery generally has a discharge cut-off voltage of 30V, which is safer than traditional lead-acid batteries that often allow discharges down to 20V, leading to quicker degradation. 4. Maximum Charging and Discharge Current.

How long does a 36V lithium ion battery last?



Unlike traditional 36V lead-acid batteries, which typically last around 500-1000 cycles, 36V lithium-ion deep cycle batteries offer a significantly longer lifespan of 2000-3000 cycles. This translates into less frequent replacements and better long-term value. 2. Maximum Charging Voltage.

What is a 36 volt battery charger?

A 36V battery charger is a device that charges a 36-volt lead-acid battery. The charger typically has two output terminals, one for the positive terminal of the battery and one for the negative terminal.



## 36v lithium battery pack charges fastest

---



### How long does it take to charge a 36V lithium battery?

When it comes to charging a 36V lithium battery, it's important to consider the recommended charging time for optimal battery life. While lithium batteries are known for their ...

### Charging Speed of Lithium Battery: Slow Charging VS Fast Charging

This article aims to provide comprehensive insights into the charging speed of lithium batteries, comparing the benefits and drawbacks of slow charging versus fast charging.



### YZPOWER 42V 2A Lithium Battery Charger for 36v 10s Li-ion Battery Pack

Auction Ends: Wed Sep 10, 6:49PM PDT  
Features  
Fast Charge: 100-120 VAC input, 42 Volt 2Amp maxi output, suitable for 10 string 36Volt Lithium Ion battery charging packs  
Product ...

### 36V 5A Lithium Battery Charger Fast Charger DC Port ...

About this item ??42V 5A Lithium battery charger?  
Special for 36V lithium battery charger.





Apply For 36 volt ebike, scooter, 10S lithium li-ion battery pack ??Built ...

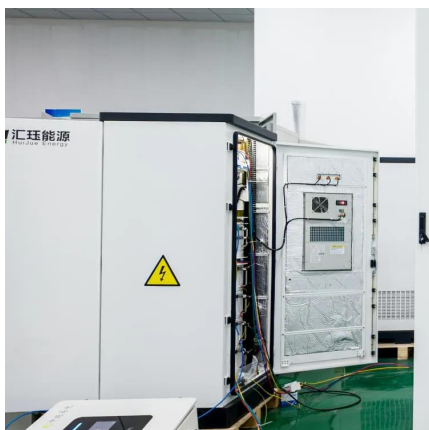
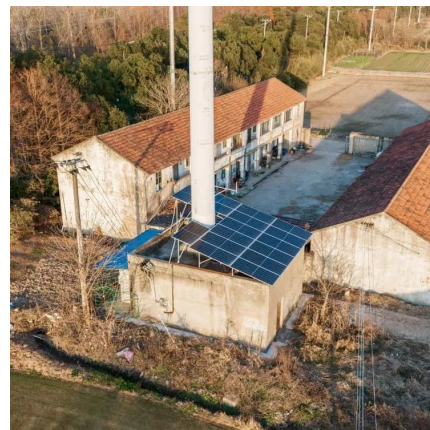


### What is the advantage and disadvantage for 36V ...

Fast Charging: The 36V lithium-ion battery pack can be charged quickly, which makes it convenient for those who need to recharge their ...

### 36V Electric Bicycle Battery 30Ah with Charger, Lithium Battery Pack

Battery Specifications: This 36V 30Ah lithium-ion e-bike battery is compatible with motors ranging from 250W to 1000W. It includes T-plug and XT60 plug connections, and comes with a fast ...



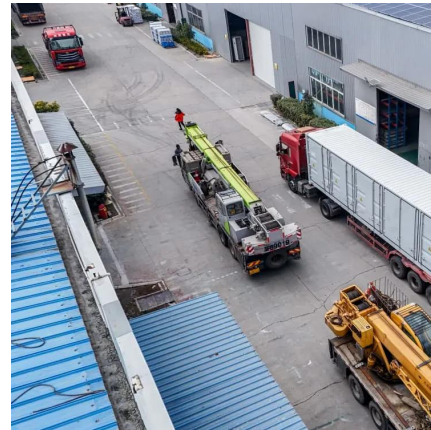
### 36V 48V Charger 2A 5A 10S 13S Lithium-ion Battery Pack Charger ...

Use Standard Battery Model Number 36V 2A Lithium Battery Charger Display screen Yes Intelligent Charge



## Understanding the Charging Time for a 36V Lithium Battery

Charging a 36V lithium battery typically takes between 4 to 8 hours with a standard charger, depending on battery capacity and charger output. Fast chargers can reduce this time ...



## Bosch 2-Pack 4 Amp-Hour; 4 Amp-Hour Lithium Power Tool Battery ...

The Bosch SKC36-01 36 V Lithium-Ion battery and charger starter kit features two Bosch BAT838 4.0 Ah 36 V batteries and the BC3680 36 V fast charger. The BAT838 battery ...

## What Should a 36V Battery Charge at? (In-depth Analysis)

When it comes to charging a 36V lithium battery, it's important to consider the recommended charging time for optimal battery life. While lithium batteries are known for their ...



## 13 Best 36V E-Bike Batteries of 2025 -- Power up Your Ride ...

36V Lithium Ebike Battery Pack with 8Ah, 14Ah, 20Ah, 30A BMS, 2A Fast Charger for Electric Bikes and Scooters If you're looking for a reliable power source for daily commutes ...



### **Amazon : Lithium Hellas 1 Pack 36V 20Ah Ebike Battery, 36 Volt**

Amazon : Lithium Hellas 1 Pack 36V 20Ah Ebike Battery, 36 Volt Electric Bike Battery with 2A Fast Charger, 30A BMS, USB Port, Safety Lock (US Stock) : ...



### **Amazon : 36 Volt Lithium Battery**

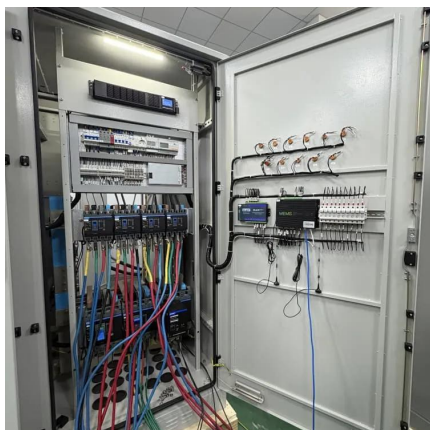
36V 100Ah LiFePO4 Lithium Battery, 8000+ Deep Cycle Golf Cart Battery 36V, 100A BMS 3840W Energy, 3 Pack 12V 100Ah Mini in Series to 36V 100Ah Lithium Batteries for Club ...

### **Amazon.ca: Lithium Batteries 36v**

36V Lithium Battery, 36V 7800Mah Battery Pack Only for M365 1:1, 1:2 High Imitation Electric Scooter Replacement Accessory 1 \$13191 FREE delivery Mon, Sep 8





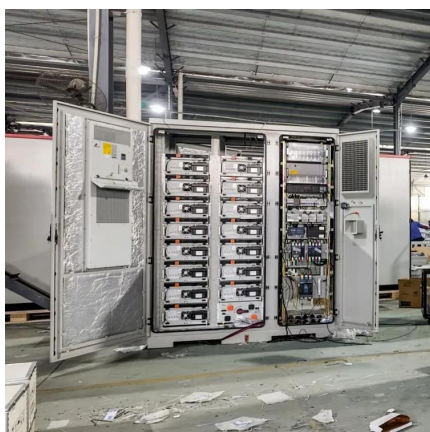


## **36V Electric Bicycle Battery 30Ah with Charger, Lithium Battery ...**

Battery Specifications: This 36V 30Ah lithium-ion e-bike battery is compatible with motors ranging from 250W to 1000W. It includes T-plug and XT60 plug connections, and comes with a fast ...

## **What Should a 36V Battery Charge at? (In-depth Analysis)**

Most 36V batteries require a charging voltage of between 42 and 58 volts. However, some batteries may require a higher CCA or lower voltage, so it's always best to check your ...



## **Charging Speed of Lithium Battery: Slow Charging VS ...**

This article aims to provide comprehensive insights into the charging speed of lithium batteries, comparing the benefits and drawbacks of slow charging ...

## **How do I charge a 36V battery?**

To charge a 36V battery effectively, use a compatible 36V-specific charger and follow these steps: Connect the charger to the battery before plugging it into the power source. ...





## 36V Battery Performance: What You've Gotta Know in 2025

Unlike lead-acid, which requires slower charging times (often 8-12 hours), 36V lithium-ion batteries can support fast charging (80% in 1-2 hours), making them more ...



## How to Choose the Right 36V Lithium Battery Charger

Selecting the right charger for your 36V lithium battery is crucial for ensuring optimal performance and longevity. Key considerations include compatibility, charging speed, ...



## Amazon : E-bike Battery 36v

36V 48V Ebike Battery 11Ah 17Ah Electric Bike Battery with 2A Fast Charger 30A BMS for 0-1400W Motor, USB Output, Safe Lock, Led Indicator Light, with Base and Charger (48V 11AH) ...



## [Top 5 36V Lithium Battery to Consider in 2025](#)

Choose the best 36v lithium battery for your needs. Get to know the price, specifications, pros, and cons of renowned battery models to buy ...



### **What is the advantage and disadvantage for 36V lithium-ion battery**

**Fast Charging:** The 36V lithium-ion battery pack can be charged quickly, which makes it convenient for those who need to recharge their electric vehicles frequently. This is ...



### **Amazon : Hoverboard 36v Charger**

42V 2A Charger with 6 Connections for 36V 10S Lithium Battery, Universal Lithium Battery Fast Charger Replacement, Compatible with Razor, Jetson, Voyage, gotrax, ninebot and More



### **Ultimate Guide to 36 Volt Lithium Batteries: Power Unleashed**

36 volt lithium batteries charge rapidly, reaching 80% capacity in 1-2 hours with appropriate chargers. Their efficient discharge characteristics allow high current output without ...



## Helpdrea 36V 10Ah Lithium Ebike Battery Pack with ...

The Helpdrea 36V 10Ah Lithium Ebike Battery Pack is a high-quality, long-lasting battery pack designed specifically for electric bikes. With its fast charger, you ...



## [How To Charge A 36V Lithium Battery?](#)

To charge a 36V lithium battery, use a dedicated 36V lithium charger with CC-CV (constant current-constant voltage) protocols. Set termination voltage to 42V (for LiFePO4) or ...

## Ultimate Guide to 36 Volt Lithium Batteries: Power ...

36 volt lithium batteries charge rapidly, reaching 80% capacity in 1-2 hours with appropriate chargers. Their efficient discharge characteristics ...





### **36V Battery Performance: What You've Gotta Know in ...**

Unlike lead-acid, which requires slower charging times (often 8-12 hours), 36V lithium-ion batteries can support fast charging (80% in 1-2 hours), ...

## **Contact Us**

---

For catalog requests, pricing, or partnerships, please visit:  
<https://www.talbert.co.za>