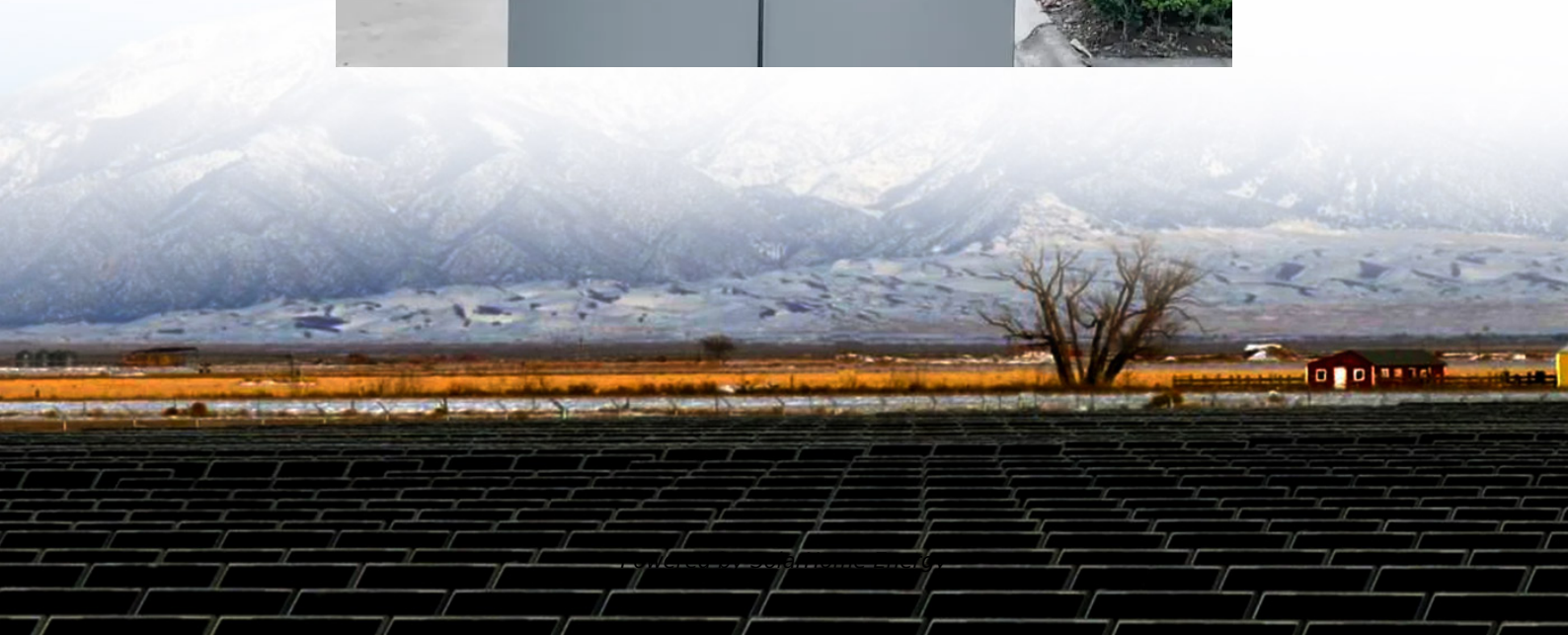


3 series 3 parallel 12v lithium battery pack





Overview

Are series and parallel connection of lithium batteries safe?

The series and parallel connection of lithium batteries is a key technology to increase voltage and capacity, but it also contains safety risks. This article will analyze in detail the principles, methods and precautions of series and parallel connection of lithium batteries to help you avoid potential risks and build a battery system correctly.

Can a 12V lithium battery be connected in series?

Yes, you can connect 12V lithium batteries in series. When you do, the voltages of each battery will add up. For instance, if you connect two 12V lithium batteries in series, you will get a total voltage of 24V. Can i connect 12v lithium in parallel?

Yes, you can connect 12V lithium batteries in parallel.

What is a series parallel battery connection?

Series-parallel. That's not wiring your batteries in both series and parallel. That would short your battery system! A series-parallel connection is when you wire several batteries in series. Then, you create a parallel connection to another set of batteries in series. By doing this, you can increase both voltage and capacity.

Can you connect 12V lithium batteries in parallel?

Yes, you can connect 12V lithium batteries in parallel. When connected in parallel, the voltage remains the same (12V in this case), but the capacity (Ah) adds up. It's essential to make sure the batteries you're connecting have the same voltage level and ideally the same state of charge to prevent unwanted current flows between the batteries.

What is a 12V lithium battery series system?



The 12V lithium battery series system requires stricter parameter matching and a higher specification protection system. When multiple 12V lithium batteries are connected in series, the total voltage increases rapidly, and the voltage resistance requirements for the protection board increase exponentially.

How to charge parallel lithium battery packs?

Specific principles must be followed when charging parallel lithium battery packs: Use a matching charger: The voltage must be suitable for the nominal voltage of the individual batteries. The current setting is reasonable: usually 0.2-0.5C of the total capacity after parallel connection.



3 series 3 parallel 12v lithium battery pack



Energy Storage Lithium Battery 12V 120Ah Lithium Battery Pack

SmartPropel Lithium Iron Phosphate Battery 12V 120Ah enables auto-balance function and support flexibility for battery connection. Design life is up to 15 years, 5000 cycles. The battery ...

Ultimate Guide of LiFePO4 Lithium Batteries in Series & Parallel

Unlock the ultimate guide to using LiFePO4 lithium batteries in series and parallel. Learn configurations, benefits, and tips for optimal performance!



3.2V LiFePO4 Cell Configurations To Build 12V, 24V ...

Generally speaking, 12V, 24V and 48V battery packs are more popular with battery DIY enthusiasts. These three types of battery packs can ...



[Connecting batteries in series - BatteryGuy ...](#)

There are two ways to wire batteries together, parallel and series. The illustrations below show



how these set wiring variations can produce ...



Batteries in Series vs Parallel: Which is Better?

Connecting in series increases voltage, but wiring in parallel increases your battery bank capacity. That is, amp-hour capacity. The total voltage does not ...

Batteries and Chargers Connected in Series and Parallel

Figure 13 shows the same 24 volt, 4 battery, series / parallel battery pack arrangement as in Example 2, but with a single 24 volt battery charger. ...



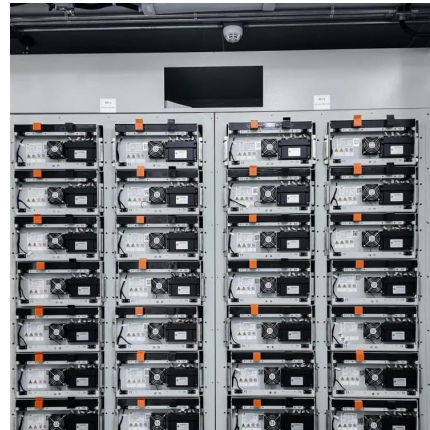
12V 100Ah LiFePO4 Battery (3 Pack), Lithium Batteries in Series

[Series and Parallel Connection] With 3 pack of 12V 100Ah LiFePO4 Battery, whether creating a 36V 100Ah lithium ion battery bank or a 12V 300Ah power system, our Dr.Prepare LiFePO4 ...



12V Lithium Ion Battery Guide, 12V Li Ion Battery ...

12V lithium battery is a lithium battery pack composed of 3 or 4 lithium batteries in series. The capacity of the battery is determined by the capacity of the single ...



Connecting Lithium Batteries in Parallel and Series

How to Connect Lithium Batteries in Parallel and Series? Series connection increases battery voltage. Parallel connection increases battery capacity.

All Things You Need to Know about Lithium Battery Series, Parallel ...

These are so-called lithium battery series, parallel and series-parallel connections. That is also a simple theory of forming a lithium battery pack. It is easily to answer" Why lithium cells need ...



How Many Cells In A Lithium Battery Pack? A Complete Guide To 12V ...

For example, a lithium-ion battery has 3 cells for 11.1 volts, 4 cells for 14.8 volts, or 10 cells for 37 volts. Cells can be arranged in series to increase voltage or in parallel to boost ...



[Batteries in Series vs Parallel: Which is Better?](#)

Do you know the difference between batteries in series vs parallel? Find out how to connect batteries in series or parallel & discover which one's best for you!

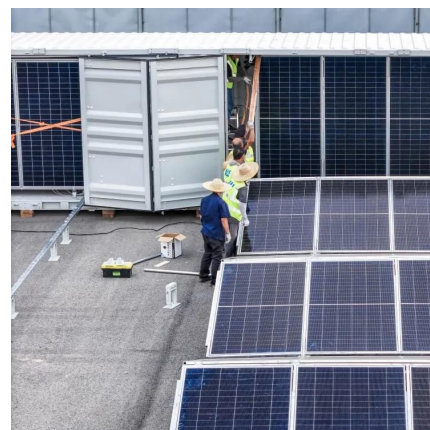


Batteries in Parallel vs Series, All You Need to Know

Deciding between series and parallel battery wiring depends on your voltage and capacity needs. Series increases voltage while keeping ...

[Batteries in Series vs Parallel: Which is Better?](#)

Connecting in series increases voltage, but wiring in parallel increases your battery bank capacity. That is, amp-hour capacity. The total voltage does not change. That means that two 12V 30Ah ...





18650 Battery Pack Calculator

This 18650 battery pack calculator is used to determine the optimal configuration of 18650 lithium-ion cells for a specific power requirement. With a 12V battery pack with 10Ah capacity, the ...

All Things You Need to Know about Lithium Battery ...

These are so-called lithium battery series, parallel and series-parallel connections. That is also a simple theory of forming a lithium battery pack. It is ...



DR.PREPARE 12V 100Ah LiFePO4 Battery (3 Pack), Lithium ...

[Series and Parallel Connection] With 3 pack of 12V 100Ah LiFePO4 Battery, whether creating a 36V 100Ah lithium ion battery bank or a 12V 300Ah power system, our Dr.Prepare LiFePO4 ...

[ECO-WORTHY 12V 280Ah 2 Pack LiFePO4 Lithium ...](#)

About this item [Bluetooth APP Monitoring] ECO-WORTHY 12V 280Ah Smart LiFePO4 Lithium Battery is built-in upgraded smart BMS, accessed Bluetooth ...



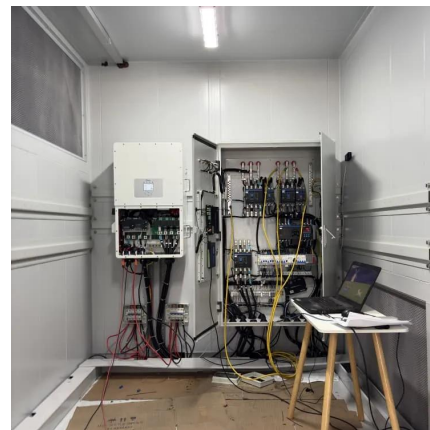
Everything About Lithium Battery Series & Parallel

Parallel connection is an effective way to increase battery life. Parallel systems are suitable for applications that require long-term power supply but low voltage requirements, ...



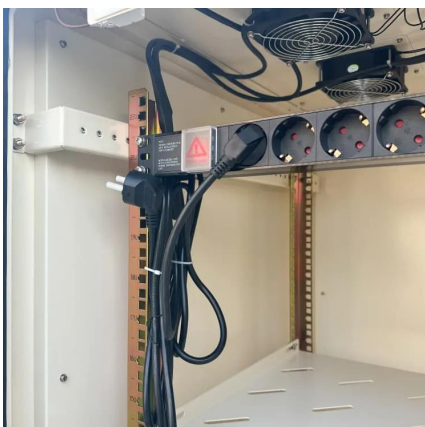
How Many Cells In A Lithium Battery Pack? A Complete Guide To 12V ...

A 12V lithium battery pack typically contains multiple cells arranged in series and parallel configurations. Most commonly, a 12V lithium battery pack is made up of four lithium ...



[How to Wire Batteries in Parallel or Series](#)

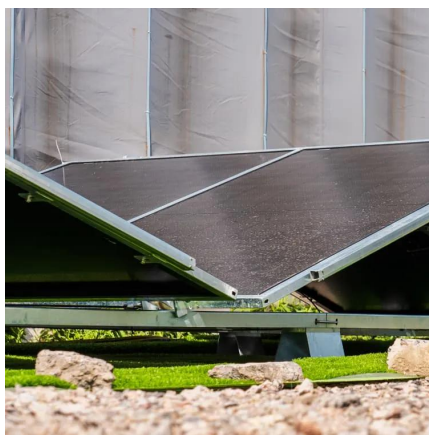
For example, if connecting two of our 12V 10Ah Dakota Lithium batteries in series, what you'll get is a doubling of voltage or a 24V 10Ah ...





Helpful Guide to Lithium Batteries in Parallel and Series

Lithium battery series and parallel: There are both parallel and series combinations in the middle of the lithium battery pack, which increases the voltage and capacity. Lithium ...



12V 100Ah LiFePO4 Lithium Battery (3-Pack), 4000~15000 Deep ...

This item: LIPULS 12V 100Ah LiFePO4 Lithium Battery (3-Pack), 4000~15000 Deep Cycle Lithium Iron Phosphate Battery, Built-in 100A BMS, Support in Series/Parallel, for ...

How Many Cells In A Lithium Battery Pack? A Complete Guide ...

For example, a lithium-ion battery has 3 cells for 11.1 volts, 4 cells for 14.8 volts, or 10 cells for 37 volts. Cells can be arranged in series to increase voltage or in parallel to boost ...



Everything About Lithium Battery Series & Parallel

Parallel connection is an effective way to increase battery life. Parallel systems are suitable for applications that require long-term power ...



Helpful Guide to Lithium Batteries in Parallel and Series

Lithium battery series and parallel: There are both parallel and series combinations in the middle of the lithium battery pack, which increases ...



lithium ion cells , How to make 3.2v lithium ion cells to 12v battery

2. lithium ion cells in parallel When connecting 3.2v lithium cells in parallel, the positive terminals are connected together, and the negative terminals are connected together ...

[Series-Parallel Battery Configurations Guide 2025](#)

Our ISO 9001-certified manufacturing facilities and IEC 62133-compliant designs ensure that every 18650 battery pack, Li-ion, lithium ...





Charging LiFePO4 Batteries In Parallel And Series Guide

This article delves into the nuances of charging LiFePO4 batteries in parallel and series arrangements, highlighting the best practices, benefits, and considerations one must ...

Contact Us

For catalog requests, pricing, or partnerships, please visit:
<https://www.talbert.co.za>