

12 Can the inverter use 24V





Overview

It is not feasible to connect a 12V inverter directly to a 24V battery. 12V inverters are designed to accept an input voltage of 12V, while 24V is clearly beyond their operating range. 12V inverters cannot withstand a 24V input, which can lead to damage to the inverter, or even safety hazards such as short circuits and fires. What is the difference between a 12V and 24V inverter?

The difference between a 12V and 24V inverter is the amount of input volts it can handle. This is the voltage flowing from the battery into the inverter before the electricity is converted from DC to AC. So a 12V inverter is designed for 12 volts input from the battery. And a 24V inverter is designed for 24 volts input from the battery.

Can a 12V inverter run on a 24v battery?

If you try to use a 12V inverter on a 24V battery it will be overloaded. Contrastingly, using a 24V inverter with a 12V battery will lead to a lack of electrical force. Knowing your inverter's voltage and what that means is critical in order for everything to run correctly.

Are 24V inverters good?

24V inverters offer better performance with more power intensive systems such as homes or larger appliances. Usually, 24V inverters are great for 1000 – 5000 watt inverters. You don't need to go too much further into inverter voltage. All you really need to know is that you should always match the inverter and voltage battery.

Is a 12V battery better than a 24v battery?

No, one is not better than the other. You should always match your inverter input voltage and battery input voltage otherwise it will not work correctly and risks damage. That means a 12V battery with a 12V inverter and a 24V battery with a 24V inverter.



Does a 12V inverter need a battery bank?

The battery bank you use will play a crucial role in how long your system can run before needing a recharge. 12V vs 24V inverters have different effects on battery life and capacity. 12V inverters typically require a larger battery bank to provide enough power for extended periods.

Can 24V solar panels be connected to a 12V inverter?

Connecting 24V solar panels to a 12V inverter is not ideal and generally not recommended. The inverter cannot work properly when the voltage does not match, and solar panels cannot be directly connected to the inverter.



12 Can the inverter use 24V

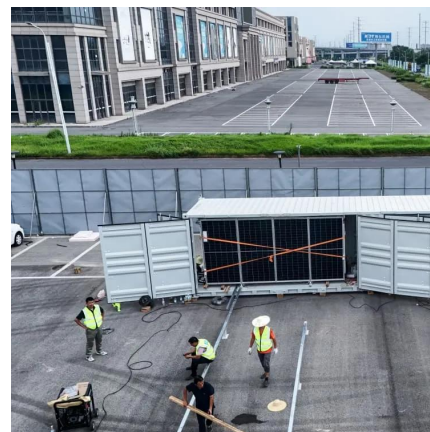


The Best 24 Volt Inverter

A 24 Volt Inverter is not quite as typical as a 12V Inverter. They have the same primary type of operation but operate at different input voltages. This article reviews some of the best, ...

12V vs 24V inverter

This article introduces how inverter works and compares 12V vs 24V inverter, including the applications, costs, and other differences, also ...



12V inverter with 24V battery bank?

However, I want a 24V system (battery bank) and the Moringstar inverter is 12V. I have read where it is possible to use a 24-to-12 volt step-down converter as a battery equalizer which is ...

how to use 12V inverter on 24 volt (2 battery) system

how to use 12V inverter on 24 volt (2 battery) system I am using a Victron 150/60 Smart



Charger powered by 2 x 450W solar panels. 2 LIFEPO4 batteries making 24V and ...



12V vs 24V Inverters Key Differences and Which One is Right for ...

In this comprehensive guide, we'll compare 12V vs 24V inverters in terms of their performance, pros and cons, and ideal use cases to help you decide which one best suits your ...

What Is a 12V to 24V Converter?

Systems that have inverters larger than 3000 watts, or solar exceeding 2500 watts can usually benefit from running a 24V system. Can You Convert 12V to 24V? Yes! you can ...



12V vs 24V Inverter: What's the difference between 12 ...

Can I Use a 24V Inverter with a 12V Battery? You can't use a 24V inverter with a 12V battery. This is because the voltage is too low and leads to under voltage. ...



12V vs 24V inverter

This article introduces how inverter works and compares 12V vs 24V inverter, including the applications, costs, and other differences, also provides a guide on choosing the ...



[How to Convert 24V Solar Panel to 12V Battery](#)

How to Convert a 24V Solar Panel to 12V Battery: You will need a converter, regulator, or charge controller to reduce the voltage level.

24v Inverter, 24v DC to 120v/240v AC Power Inverter , inverter

24V 600w inverter with peak power 1200w, which is a modified sine wave, converts your car battery power to AC power 110/120 Volt or 220/230/240 Volt for options, with a safe charging ...



[12V Inverter vs 24V Inverter -- What Is The ...](#)

This article will explore the differences between 12v inverter vs 24v inverter, considering factors such as energy loss, battery requirements, and ...



will a 12v inverter run off 24v batteries

Conclusion: In conclusion, while it is possible to use a 12V inverter with 24V batteries, there are compatibility concerns and challenges that need to be ...



Can I Connect a 12V Inverter to a 24V Battery Bank

Connecting a 12V inverter directly to a 24V battery bank is a common mistake that can have costly consequences. The core reason lies in voltage compatibility: a 12V inverter is ...

How to Convert 12v Inverter to 24v?

Yes, you can convert the adapter or converter that boosts the voltage for various purposes, through the processing work of the booster device, the 12V output by the 12V ...





Can I Run a 12V Inverter on a 24V Battery?

It is not feasible to connect a 12V inverter directly to a 24V battery. 12V inverters are designed to accept an input voltage of 12V, while 24V is clearly beyond their operating ...

Frequently Asked Questions about Inverters

Frequently Asked Questions about Inverters How much battery capacity do I need with an inverter? As a rule of thumb, the minimum required battery capacity for a 12-volt system is ...



Can I Use a 24V Inverter with a 12V Battery? Compatibility and

A 24V inverter is designed to operate within specific input voltage ranges. Supplying it with 12V may cause the inverter to malfunction, leading to burnt circuits or components.

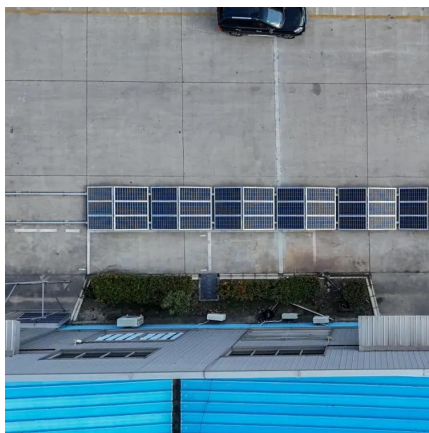
12V vs 24V Inverter: What's the difference between 12 and 24 Volt

Can I Use a 24V Inverter with a 12V Battery? You can't use a 24V inverter with a 12V battery. This is because the voltage is too low and leads to under voltage. If an inverter senses under ...



[How To Get 12 Volts From a 24 Volt System](#)

A buck converter is a type of DC-DC converter that steps down voltage from a higher level (24V) to a lower level (12V) while attempting to maintain efficiency. It works by ...



Can you use 3x PHOENIX INVERTER 24V/500's as a 3 Phase UPS

2 days ago· So we need a 3 phase 400V 1.6A UPS for keeping a 3 Phase 400V 1.6A input, 24V 20A output power supply running in the event of a loss of power on an industrial machine. Can ...



12V Inverter vs 24V Inverter -- What Is The Difference & Which ...

This article will explore the differences between 12v inverter vs 24v inverter, considering factors such as energy loss, battery requirements, and suitability for different ...





Can I Run a 12V Inverter on a 24V Battery?

You cannot connect a 12V inverter directly to a 24V battery because 12V inverters are only designed for 12V input, and 24V exceeds their operating range.



12V vs 24V Inverter: What's The Difference & Which is Better

This article will explore the pros and cons of 12 voltage inverters vs 24 voltage inverters, considering factors such as energy loss, battery requirements, and suitability for different ...

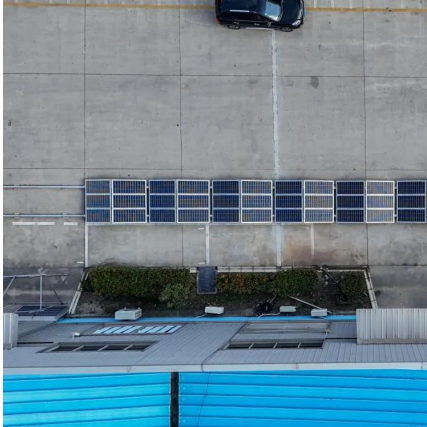
The Difference Between 12V & 24V: Which is Best for You?

Compare 12V and 24V systems to find the best fit for your needs. Discover their pros, cons, and uses for RVs, solar setups, and high-power equipment.



12V vs 24V Inverter: Voltage Comparison

Explore the differences between 12V and 24V inverters in terms of power output, efficiency, and typical applications to determine which voltage level suits your requirements.



Can I Use 24V Inverter with 12V Battery

No, you cannot safely use a 24V inverter with a 12V battery without causing damage or failure. The voltage mismatch between the inverter and battery can result in poor ...



Can I Run A 12V Inverter On A 24V Battery? Solutions And Best ...

No, a 12V inverter cannot operate on a 24V battery without modification. Connecting a 12V inverter to a 24V battery can cause damage to the inverter. The inverter is ...

Contact Us

For catalog requests, pricing, or partnerships, please visit:
<https://www.talbert.co.za>