

100 square meters of rooftop photovoltaic panels installed





Overview

How many solar panels can you put on an 800 sq ft roof?

Now, by average solar panel wattage per square foot, we can put a 10.35kW solar system on an 800 sq ft roof. This is how many solar panels you can put on this roof: If you only use 100-watt solar panels, you can put 103 100-watt solar panels on the roof.

How much area is required for a new rooftop solar project?

As a rule of thumb, we can install 1 kW of solar panels in 100 sq.ft of shadow free area on a RCC roof. Therefore, area required for 3 kW of solar plant = $3 \times 100 \text{ sq ft} = 300 \text{ sq ft}$ Now that you have understood the calculation of the estimated area required for your installation, you can accordingly proceed with your New Rooftop Solar Project.

How to calculate total rooftop area required to install solar panels?

Find out the total Rooftop Area Required to install these Solar Panels Hence, you only need to Multiply the Surface Area of one Panel with the Total Number of Panels required for your house, and you will easily get the Total Rooftop Area required to install your Residential Solar Power Project.

What is solar rooftop calculation?

Solar rooftop are solar panels placed on top of roofs of commercial, institutional or residential buildings. They capture the light energy emitted by the sun and convert it into electrical energy. This setup is also known as solar rooftop photo-voltaic system.

How many solar panels can be installed on a RCC roof?

Practically, we have to leave the space between rows and columns of solar panels so that solar panel can be easily cleaned and for maintenance work also, there should be some space left to access the solar plant. As a rule of thumb, we can install 1 kW of solar panels in 100 sq.ft of shadow free area on



a RCC roof.

Should solar panels be installed on a south-facing roof?

Ideally, your solar panels will be installed on a south-facing roof at an angle of about 30°. These are the optimal conditions for solar panel production. The closer you get to this, the more electricity your panels produce. Solar panels with a larger power-to-size ratio will produce more electricity per square foot.



100 square meters of rooftop photovoltaic panels installed



[Solar Power Roof Area Calculator , Roof Space ...](#)

The Solar Power Roof Area Calculator is a valuable tool designed to help users estimate the required roof area for installing solar panels. Its ...

Calculate Rooftop Area for Solar Panel Installation

This article will give you a quick and easy step-by-step Guide on How to Calculate the Roof Top Area Required to Install Solar Panels for installing a fully-functional Residential ...



Solar Rooftop Calculator: How Many Solar Panels Can Fit On Roof...

We have calculated how many of either 100-watt, 300-watt, or 400-watt solar panels you can put on roofs ranging from very little 300 sq ft roof to huge 5,000 sq ft roof, and summarized the ...

Solar Power Roof Area Calculator , Roof Space Needed for a ...

The Solar Power Roof Area Calculator is a valuable tool designed to help users estimate the



required roof area for installing solar panels. Its primary use is to determine how ...



2025 Solar Panel Costs: Ultimate Guide to Pricing and ...

Similarly, a solar panel installed in 1980 on a rooftop in Vermont is still producing at 92% of its original capacity. Based on manufacturer ...



Israel mandates rooftop solar on new big buildings, targets 3.5 ...

The rules apply to all new non-residential buildings with rooftop areas of more than 250 square meters and detached residential buildings with roofs larger than 100 square meters.



100 square meters of photovoltaic panels on the roof

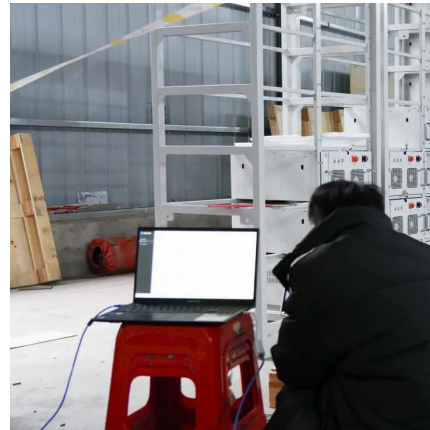
How many solar panels can you put on an 800 sq ft roof? Now, by average solar panel wattage per square foot, we can put a 10.35kW solar system on an 800 sq ft roof. This is how many ...





Solar Rooftop Calculator

The Recommended capacity for Rooftop Solar Plant as per your inputs is: Calculation is indicative in nature. Actual numbers may vary. Maximum capacity for availing subsidy is 10kW. Capacity ...



[How much solar power can my roof generate?](#)

Even better is the fact that once installed, solar panels and the entire photovoltaic system need very little maintenance and typically work for ...

Solar Rooftop Potential

According to National Renewable Energy Laboratory (NREL) analysis in 2016, there are over 8 billion square meters of rooftops on which solar panels could be installed in the United States, ...



Solar Panels for Roofs

It calculates the maximum number of panels that fit on the available roof surface, taking into account important factors such as orientation, inclination, and panel type. It's important to note ...



How to Calculate the Surface Area Required by Solar ...

How can you do a rough estimate of the area required by the solar panels? Here is a quick and easy way to go about it. Lets assume that you ...



[How to Calculate Solar Panel KWp \(KWh Vs. KWp\)](#)

How to Calculate Solar Panel KWp: The technical specifications label on the back of your solar pane will tell you its KWp.

[Solar Power per Square Meter Calculator](#)

Factors to Consider for Solar Panel Output Per Square Meter. Region: If you are living in countries near to poles, you will receive less sunlight. In comparison to the people ...





[How much solar power can my roof generate?](#)

Solar panels don't come in one standard size. But most of the popular home panels today are about 20 square feet. To calculate how many panels can fit on your roof, ...

How much electricity can solar energy generate per ...

Analyzing these elements provides a nuanced picture of potential solar energy generation on a surface area of 100 square meters. One of the ...



[How to Calculate Solar Panel KWp \(KWh Vs. KWp\)](#)

To calculate the KWp (kilowatt-peak) of a solar panel system, you need to determine the total solar panel area and the solar panel yield, ...



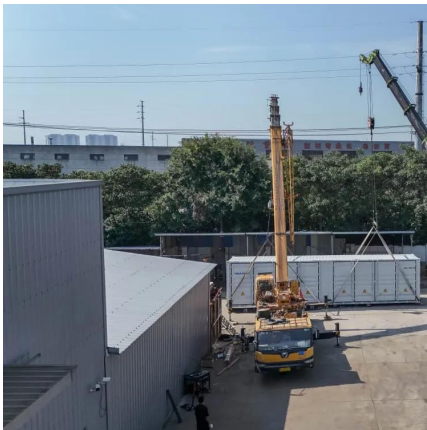
Solar Panel Cost In 2025: It May Be Lower Than You ...

Solar panels are just 12% of the total cost of a solar panel installation. Federal and state solar incentives significantly lower the cost of ...



Rooftop solar photovoltaic power generation per 100 square ...

How much solar power can a 2000 sq ft roof generate? ample. Such a big roof has 1500 sq ft of viable solar panel area. If each of these viable square feet generates 17.25 watts of ...



How much does Solar Panel Installation Cost in India, ...

Let's see how to do the best quality solar panel installation which will live for a long time and provide you a long term benefit. Before this, we will ...



Calculate Rooftop Area for Solar Panel Installation

This article will give you a quick and easy step-by-step Guide on How to Calculate the Roof Top Area Required to Install Solar Panels for ...





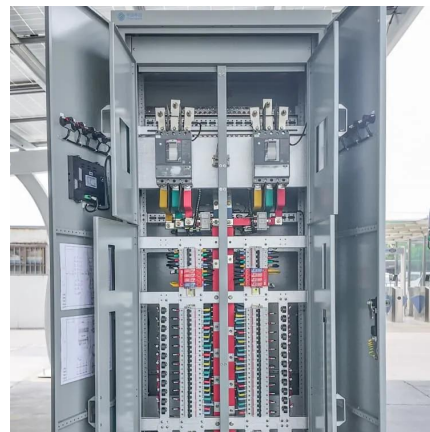
[Solar Rooftop Calculator , Solar Panel Calculator](#)

Online Solar Roof Top Calculator Calculates the number of solar panels, kilowatt capacity, daily unit production, and require area in Square Meter as well as Square Feet based on the ...



[We Analyzed 100 Solar Panels: Dimensions, ...](#)

If you're considering a residential or commercial solar installation, understanding the typical size of solar panels is an important first step. The length and width ...



Roof Structure Design for Solar Panel Installation

However, on average, a standard 60 solar cells panel, measuring 1.7 square meters, typically weighs around 18 kg (equivalent to 0.10 kN/m²), while a 72 solar cells ...



Solar Panel Output per Square Meter: Efficiency ...

Discover how much electricity solar panels generate per square meter, explore efficiency factors, technology comparisons, and future innovations in ...



[How much solar power can my roof generate?](#)

Solar panels don't come in one standard size. But most of the popular home panels today are about 20 square feet. To calculate how many ...

Guide to Solar Panel Sizes & Dimensions (August 2025)

Solar cell dimensions are typically around 189 x 100 x 3.99cm (6.2 x 3.28 x 0.13 feet), while solar panel dimensions are usually between 1.6m² to ...





How to Calculate the Surface Area Required by Solar Panels

How can you do a rough estimate of the area required by the solar panels? Here is a quick and easy way to go about it. Lets assume that you want to install 10 solar panels rated ...

How much electricity can solar energy generate per 100 square meters

Analyzing these elements provides a nuanced picture of potential solar energy generation on a surface area of 100 square meters. One of the foremost influencers is solar ...



Contact Us

For catalog requests, pricing, or partnerships, please visit:
<https://www.talbert.co.za>